




Rabbit Anti-ST2 antibody

SL2382R

Product Name:	ST2
Chinese Name:	白细胞介素1受体相关蛋白抗体
Alias:	DER-4; DER4; FIT 1; Growth stimulation expressed gene 2; homolog of mouse growth stimulation-expressed; Il1rl1; IL33R; ILRL1_HUMAN; Interleukin 1 receptor like 1; interleukin 1 receptor related protein; Interleukin-1 receptor-like 1; Ly84; Lymphocyte antigen 84; Protein ST2; ST2; ST2L; ST2V; Ste2; Suppressor of tumorigenicity 2; T1; T1 protein.
文献引用 	Specific References(1) SL2382R has been referenced in 1 publications. [IF=3.53] Yang S-H, Lin J-C, Wu S-Y, Huang K-L, Jung F, et al. (2015) Membrane Translocation of IL-33 Receptor in Ventilator Induced Lung Injury. PLoS ONE 10(3): e0121391. WB;Rat. PubMed:25815839
Organism Species:	Rabbit
Clonality:	Polyclonal
React Species:	Mouse,Rat,Dog,Pig,Cow,
Applications:	Flow-Cyt=2µg/Test not yet tested in other applications. optimal dilutions/concentrations should be determined by the end user.
Molecular weight:	61kDa
Cellular localization:	The cell membraneSecretory protein
Form:	Lyophilized or Liquid
Concentration:	1mg/ml
immunogen:	KLH conjugated synthetic peptide derived from human Interleukin 1 receptor like 1:11-110/556<Extracellular>
Lsotype:	IgG
Purification:	affinity purified by Protein A
Storage Buffer:	0.01M TBS(pH7.4) with 1% BSA, 0.03% Proclin300 and 50% Glycerol.

Storage:	Store at -20 °C for one year. Avoid repeated freeze/thaw cycles. The lyophilized antibody is stable at room temperature for at least one month and for greater than a year when kept at -20°C. When reconstituted in sterile pH 7.4 0.01M PBS or diluent of antibody the antibody is stable for at least two weeks at 2-4 °C.
PubMed:	PubMed
Product Detail:	<p>ST2 is a member of a superfamily containing the Interleukin 1 (IL1) receptor and the Toll-like receptors (TLRs). The TLRs are signaling molecules that recognize different microbial products during infection and serve as an important link between the innate and adaptive immune responses. ST2 was originally identified as a protein whose production was stimulated by various proliferation-inducing agents such as PDGF and FGF. More recently, it has been shown to negatively regulate IL1 receptor and Toll-like receptor 4 (TLR4) signaling and to maintain endotoxin tolerance. It has been suggested that the inhibition of TLR4 signaling occurs through the association and sequestering of TLR adaptor molecules such as MyD88 and TIRAP.</p> <p>Function: Receptor for interleukin-33 (IL-33), its stimulation recruits MYD88, IRAK1, IRAK4, and TRAF6, followed by phosphorylation of MAPK3/ERK1 and/or MAPK1/ERK2, MAPK14, and MAPK8. Possibly involved in helper T-cell function.</p> <p>Subunit: Interacts with MYD88, IRAK1, IRAK4, and TRAF6.</p> <p>Subcellular Location: Isoform C: Cell membrane. Isoform B: Secreted. Cell membrane; Single-pass type I membrane protein.</p> <p>Tissue Specificity: Highly expressed in kidney, lung, placenta, stomach, skeletal muscle, colon and small intestine. Isoform A is prevalently expressed in the lung, testis, placenta, stomach and colon. Isoform B is more abundant in the brain, kidney and the liver. Isoform C is not detected in brain, heart, liver, kidney and skeletal muscle.</p> <p>Similarity: Belongs to the interleukin-1 receptor family. Contains 3 Ig-like C2-type (immunoglobulin-like) domains. Contains 1 TIR domain.</p> <p>SWISS: Q01638</p> <p>Gene ID: 9173</p> <p>Database links:</p>

[Entrez Gene: 9173](#)Human

[Entrez Gene: 17082](#)Mouse

[Omid: 601203](#)Human

[SwissProt: Q01638](#)Human

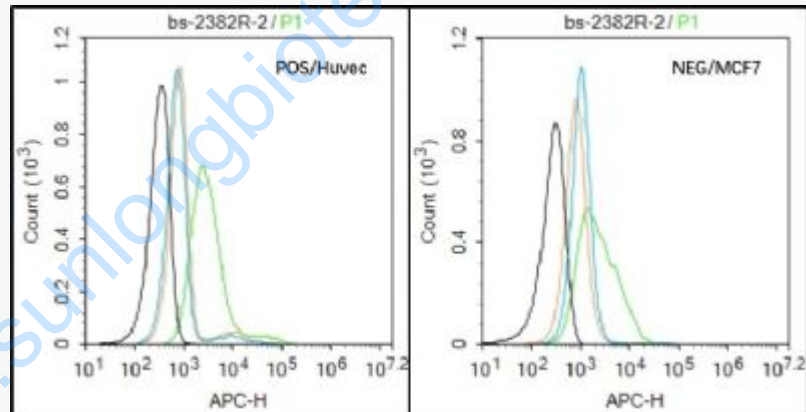
[SwissProt: P14719](#)Mouse

[Unigene: 66](#)Human

[Unigene: 289824](#)Mouse

Important Note:

This product as supplied is intended for research use only, not for use in human, therapeutic or diagnostic applications.



Picture:

Black line : Positive blank control (HUVEC); Negative blank control (MCF7)

Green line : Primary Antibody (Rabbit Anti-ST2 antibody (SL2382R))

Orange line : Isotype Control Antibody (Rabbit IgG) .

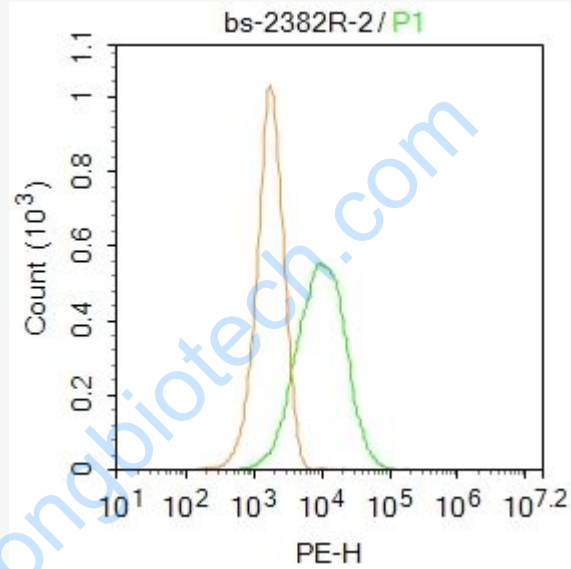
Blue line : Secondary Antibody (Goat anti-rabbit IgG-AF647)

HUVEC(Positive)and MCF7(Negative control)cells (black) were incubated in 5%

BSA blocking buffer for 30 min at room temperature. Cells were then stained with

ST2 Antibody(SL2382R)at 1:50 dilution in blocking buffer and incubated for 30 min

at room temperature, washed twice with 2% BSA in PBS, followed by secondary antibody(blue) incubation for 40 min at room temperature. Acquisitions of 20,000 events were performed. Cells stained with primary antibody (green), and isotype control (orange).



Blank control: HUVEC.

Primary Antibody (green line): Rabbit Anti-ST2 antibody (SL2382R)

Dilution: 2 μ g /10⁶ cells;

Isotype Control Antibody (orange line): Rabbit IgG .

Secondary Antibody : Goat anti-rabbit IgG-PE

Dilution: 1 μ g /test.

Protocol

The cells were incubated in 5%BSA to block non-specific protein-protein interactions for 30 min at at room temperature .Cells stained with Primary Antibody for 30 min at room temperature. The secondary antibody used for 40 min at room

	temperature. Acquisition of 20,000 events was performed.
--	--

www.sunlongbiotech.com