



## Rabbit Anti-TRPC6 antibody

SL2393R

<b>Product Name:</b>	TRPC6
<b>Chinese Name:</b>	瞬时受体电位离子Channel protein6抗体
<b>Alias:</b>	MTRP6; Short transient receptor potential channel 6; si:rp71-1p14.9; Transient Receptor Potential Cation Channel Subfamily C Member 6; Transient receptor protein 6; TRP 6; TRP-6; TRP6; TRPC 6; TrpC6; TRPC6_HUMAN; TRRP6; bZ1P14.9; FLJ11098; FLJ14863; FSGS2.
<b>Organism Species:</b>	Rabbit
<b>Clonality:</b>	Polyclonal
<b>React Species:</b>	Human,Mouse,Rat,Dog,Pig,Cow,Horse,Rabbit,Guinea Pig,
<b>Applications:</b>	WB=1:500-2000ELISA=1:500-1000IHC-P=1:400-800Flow-Cyt=0.2µg/Test (Paraffin sections need antigen repair) not yet tested in other applications. optimal dilutions/concentrations should be determined by the end user.
<b>Molecular weight:</b>	106kDa
<b>Cellular localization:</b>	The cell membrane
<b>Form:</b>	Lyophilized or Liquid
<b>Concentration:</b>	1mg/ml
<b>immunogen:</b>	KLH conjugated synthetic peptide derived from human TRPC6:651-750/931<Extracellular>
<b>Lsotype:</b>	IgG
<b>Purification:</b>	affinity purified by Protein A
<b>Storage Buffer:</b>	0.01M TBS(pH7.4) with 1% BSA, 0.03% Proclin300 and 50% Glycerol.
<b>Storage:</b>	Store at -20 °C for one year. Avoid repeated freeze/thaw cycles. The lyophilized antibody is stable at room temperature for at least one month and for greater than a year when kept at -20°C. When reconstituted in sterile pH 7.4 0.01M PBS or diluent of antibody the antibody is stable for at least two weeks at 2-4 °C.
<b>PubMed:</b>	<a href="#">PubMed</a>
<b>Product Detail:</b>	The protein encoded by this gene forms a receptor-activated calcium channel in the cell membrane. The channel is activated by diacylglycerol and is thought to be under the control of a phosphatidylinositol second messenger system. Activation of this channel

occurs independently of protein kinase C and is not triggered by low levels of intracellular calcium. Defects in this gene are a cause of focal segmental glomerulosclerosis 2 (FSGS2). [provided by RefSeq].

**Subunit:**

Interacts with MX1 and RNF24.

**Subcellular Location:**

Membrane; Multi-pass membrane protein.

**Tissue Specificity:**

Expressed primarily in placenta, lung, spleen, ovary and small intestine. Expressed in podocytes and is a component of the glomerular slit diaphragm.

**Similarity:**

Belongs to the transient receptor (TC 1.A.4) family, STpC subfamily. TRPC6 sub-subfamily.

Contains 4 ANK repeats.

**SWISS:**

Q9Y210

**Gene ID:**

7225

**Database links:**

[Entrez Gene: 7225](#)Human

[Entrez Gene: 22068](#)Mouse

[Entrez Gene: 89823](#)Rat

[Omim: 603652](#)Human

[SwissProt: Q9Y210](#)Human

[SwissProt: Q61143](#)Mouse

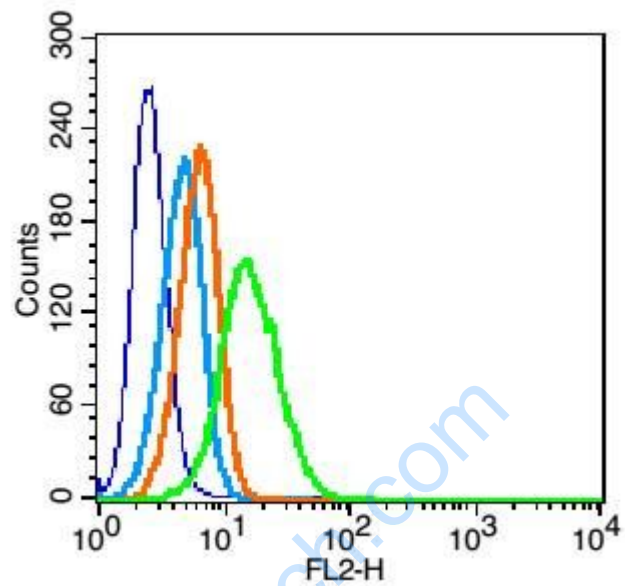
[Unigene: 159003](#)Human

[Unigene: 325086](#)Mouse

[Unigene: 105986](#)Rat

**Important Note:**

This product as supplied is intended for research use only, not for use in human, therapeutic or diagnostic applications.



**Picture:**

blank control(blue): U937 cells (fixed with 4% paraformaldehyde)

Isotype control(orange): Cell lines treated with rabbit IgG (SL2393R) instead of the primary antibody to confirm that primary antibody binding is specific. primary antibody(Green):Rabbit Anti-CD162 antibody(SL2393R),Concentration:

0.2 $\mu$ g/10<sup>6</sup> cells

Secondary only control(light blue): Both cell lines treated with Goat Anti-rabbit IgG/FITC antibody (SL2393R) to confirm no background signal produced from secondary antibody alone.