



Rabbit Anti-beta Glucan Receptor antibody

SL2455R

Product Name:	beta Glucan Receptor
Chinese Name:	β葡聚糖受体抗体
Alias:	Dectin1; Dectin-1; Dectin 1; CLECSF12; C-type lectin domain family 7 member A; beta Glucan Receptor; Beta GR; BGR; C type calcium dependent carbohydrate recognition domain lectin superfamily member 12; Clec7a; CANDF4; DECTIN1; CLEC7A protein; Clecsf12; Dectin 1; DECTIN 1 receptor; Dectin1; Dendritic cell associated C type lectin 1; Lectin like receptor 1; beta Glucan Receptor; Putative transmembrane protein dectin 1; CLC7A HUMAN.
Organism Species:	Rabbit
Clonality:	Polyclonal
React Species:	Human,Mouse,Rat,
Applications:	WB=1:500-2000ELISA=1:500-1000 not yet tested in other applications. optimal dilutions/concentrations should be determined by the end user.
Molecular weight:	28kDa
Cellular localization:	The cell membrane
Form:	Lyophilized or Liquid
Concentration:	1mg/ml
immunogen:	KLH conjugated synthetic peptide derived from human Dectin-1:41-140/247<Extracellular>
Lsotype:	IgG
Purification:	affinity purified by Protein A
Storage Buffer:	0.01M TBS(pH7.4) with 1% BSA, 0.03% Proclin300 and 50% Glycerol.
Storage:	Store at -20 °C for one year. Avoid repeated freeze/thaw cycles. The lyophilized antibody is stable at room temperature for at least one month and for greater than a year when kept at -20°C. When reconstituted in sterile pH 7.4 0.01M PBS or diluent of antibody the antibody is stable for at least two weeks at 2-4 °C.
PubMed:	PubMed
Product Detail:	This gene encodes a member of the C-type lectin/C-type lectin-like domain (CTL/CTLD) superfamily. The encoded glycoprotein is a small type II membrane

receptor with an extracellular C-type lectin-like domain fold and a cytoplasmic domain with an immunoreceptor tyrosine-based activation motif. It functions as a pattern-recognition receptor that recognizes a variety of beta-1,3-linked and beta-1,6-linked glucans from fungi and plants, and in this way plays a role in innate immune response. Alternate transcriptional splice variants, encoding different isoforms, have been characterized. This gene is closely linked to other CTL/CTLD superfamily members on chromosome 12p13 in the natural killer gene complex region. [provided by RefSeq].

Function:

Lectin that functions as pattern receptor specific for beta-1,3-linked and beta-1,6-linked glucans, such as cell wall constituents from pathogenic bacteria and fungi. Necessary for the TLR2-mediated inflammatory response and for TLR2-mediated activation of NF-kappa-B. Enhances cytokine production in macrophages and dendritic cells. Mediates production of reactive oxygen species in the cell. Mediates phagocytosis of C.albicans conidia. Binds T-cells in a way that does not involve their surface glycans and plays a role in T-cell activation. Stimulates T-cell proliferation (By similarity).

Subunit:

Homodimer. Interacts with SYK; participates in leukocyte activation in presence of fungal pathogens.

Subcellular Location:

Cell membrane; Single-pass type II membrane protein.

Tissue Specificity:

Detected in dendritic cells, in paracortical and medullary regions of lymph nodes, and in spleen red pulp and white pulp.

Post-translational modifications:

on tyrosine residues in response to glucan binding.

Similarity:

Contains 1 C-type lectin domain.

SWISS:

Q9BXN2

Gene ID:

64581

Database links:

[Entrez Gene: 64581](#)Human

[Entrez Gene: 56644](#)Mouse

[Entrez Gene: 502902](#)Rat

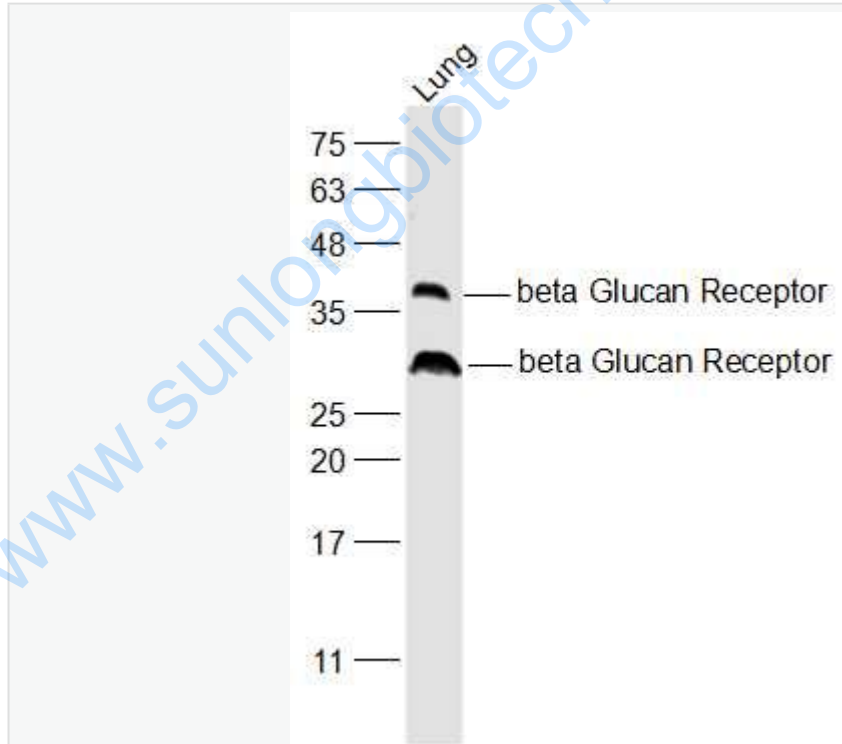
[Omim: 606264](#)Human
[SwissProt: Q9BXN2](#)Human
[SwissProt: Q6QLQ4](#)Mouse
[Unigene: 143929](#)Human
[Unigene: 239516](#)Mouse

Important Note:

This product as supplied is intended for research use only, not for use in human, therapeutic or diagnostic applications.

β -葡聚糖受体是一种非调理素依赖性受体,可在免疫反应早期,在清除衰老细胞和防御感染方面发挥重要作用,进而实现其抗Tumour、抗感染等生物学效应。

Picture:



Sample:

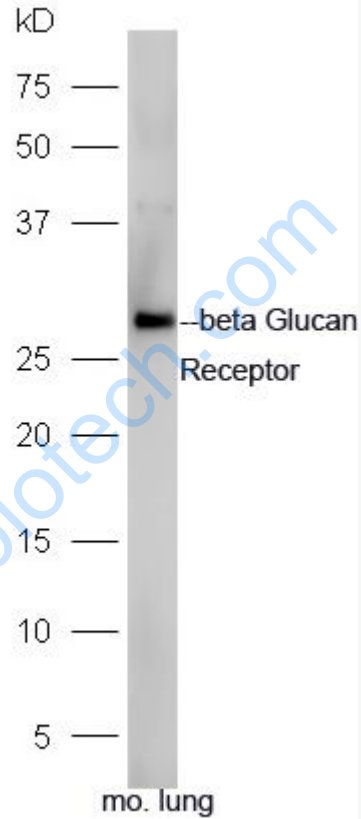
Lung (Mouse) Lysate at 40 ug

Primary: Anti-beta Glucan Receptor (SL2455R) at 1/1000 dilution

Secondary: IRDye800CW Goat Anti-Rabbit IgG at 1/20000 dilution

Predicted band size: 28 kD

Observed band size: 28/38 kD



Sample: Lung(Mouse) lysate at 30ug;

Primary: Anti-beta Glucan Receptor (SL2455R) at 1:300 dilution;

Secondary: HRP conjugated Goat-Anti-rabbit IgG(SL2455R) at 1:5000 dilution;

Predicted band size: 28 kD

Observed band size: 28 kD



Sample:

Spleen (Mouse) Lysate at 40 ug

Thymus (Mouse) Lysate at 40 ug

Primary: Anti- beta Glucan Receptor (SL2455R) at 1/1000 dilution

Secondary: IRDye800CW Goat Anti-Rabbit IgG at 1/20000 dilution

Predicted band size: 28 kD

Observed band size: 28 kD



Sample:

Spleen (Mouse) Lysate at 40 ug

Thymus (Mouse) Lysate at 40 ug

Primary: Anti- beta Glucan Receptor (SL2455R) at 1/1000 dilution

Secondary: IRDye800CW Goat Anti-Rabbit IgG at 1/20000 dilution

Predicted band size: 28 kD

Observed band size: 28 kD



Sample:

Lung (Rat) Lysate at 40 ug

Spleen (Mouse) Lysate at 40 ug

Primary: Anti-beta Glucan Receptor (SL2455R) at 1/1000 dilution

Secondary: IRDye800CW Goat Anti-Rabbit IgG at 1/20000 dilution

Predicted band size: 28 kD

Observed band size: 38 kD

www.sunlongbiotech.com