



Rabbit Anti-CD244 antibody

SL2470R

| | |
|-------------------------------|---|
| Product Name: | CD244 |
| Chinese Name: | CD244抗体 |
| Alias: | NKR2B4; SLAMF4; natural killer cell receptor 2B4 isoform 2 precursor; 2B4 ; C9.1; CD244 antigen; CD244 molecule natural killer cell receptor 2B4; CD244 natural killer cell receptor 2B4; F730046O15Rik; h2B4; Ly90; NAIL; Natural killer cell activation-inducing ligand; Natural killer cell receptor 2B4; NK cell activation inducing ligand; NK cell activation inducing ligand NAIL; NK cell type I receptor protein 2B4; Nmrk; Non-MHC restricted killing associated; OTTHUMP00000027884; p38; SLAM family, member 4. |
| Organism Species: | Rabbit |
| Clonality: | Polyclonal |
| React Species: | Human,Mouse,Rat, |
| Applications: | WB=1:500-2000ELISA=1:500-1000IHC-F=1:400-800ICC=1:100-500IF=1:100-500 (Paraffin sections need antigen repair) not yet tested in other applications. optimal dilutions/concentrations should be determined by the end user. |
| Molecular weight: | 42kDa |
| Cellular localization: | The cell membrane |
| Form: | Lyophilized or Liquid |
| Concentration: | 1mg/ml |
| immunogen: | KLH conjugated synthetic peptide derived from human CD244:151-250/370<Extracellular> |
| Lsotype: | IgG |
| Purification: | affinity purified by Protein A |
| Storage Buffer: | 0.01M TBS(pH7.4) with 1% BSA, 0.03% Proclin300 and 50% Glycerol. |
| Storage: | Store at -20 °C for one year. Avoid repeated freeze/thaw cycles. The lyophilized antibody is stable at room temperature for at least one month and for greater than a year when kept at -20°C. When reconstituted in sterile pH 7.4 0.01M PBS or diluent of antibody the antibody is stable for at least two weeks at 2-4 °C. |
| PubMed: | PubMed |

This gene encodes a cell surface receptor expressed on natural killer (NK) cells (and some T cells) that mediate non-major histocompatibility complex (MHC) restricted killing. The interaction between NK-cell and target cells via this receptor is thought to modulate NK-cell cytolytic activity. Alternatively spliced transcript variants encoding different isoforms have been found for this gene.[provided by RefSeq, Oct 2009]

Function:

Modulate other receptor-ligand interactions to enhance leukocyte activation.

Subunit:

Interacts with CD48. Following phosphorylation, it is able to recruit PTPN11/SHP-2 and SH2D1A/SAP. Binding of SH2D1A/SAP to CD244 prevents its association with PTPN11/SHP-2.

Subcellular Location:

Membrane; Single-pass type I membrane protein (Potential).

Tissue Specificity:

Expressed in spleen, PBL, followed by lung, liver, testis and small intestine. Expressed not only in NK cells, but also on monocytes and basophils.

Similarity:

Contains 2 Ig-like (immunoglobulin-like) domains.

SWISS:

Q9BZW8

Gene ID:

51744

Database links:

[Entrez Gene: 51744](#)Human

[Entrez Gene: 18106](#)Mouse

[Entrez Gene: 64025](#)Rat

[Omim: 605554](#)Human

[SwissProt: Q9BZW8](#)Human

[SwissProt: Q07763](#)Mouse

[SwissProt: Q9JLM2](#)Rat

[Unigene: 157872](#)Human

[Unigene: 2299](#)Mouse

Product Detail:

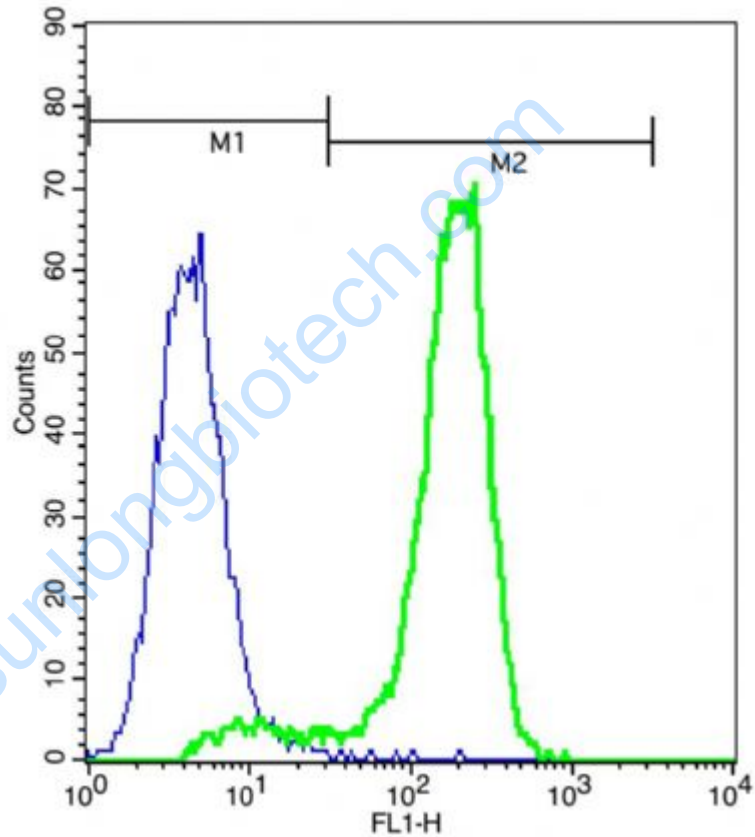
[Unigene: 113760Rat](#)

[Unigene: 53994Rat](#)

Important Note:

This product as supplied is intended for research use only, not for use in human, therapeutic or diagnostic applications.

Picture:



Cell: A549 (2% Paraformaldehyde fixed for 10 minutes).

Concentration: primary antibody, 1:100;Secondary antibody,1: 50.

Incubation: primary antibody ,1 hour;Secondary antibody,40 minutes; at Room temperature.

Host/Blank: A549.

Flow cytometric analysis of Rabbit Anti-CD244 antibody (SL2470R)(green)

compared with control in the absence of primary antibody (blue) followed by A549.

Secondary antibody: Goat Anti-rabbit IgG/FITC antibody (SL2470R)

www.sunlongbiotech.com