



Rabbit Anti-SLAMF9 antibody

SL2486R

Product Name:	SLAMF9
Chinese Name:	CD2F-10抗体
Alias:	SLAM family member 9; CD2 family member 10; CD2F-10; CD84 homolog 1; CD84-H1; 2310026I04Rik; AI462096; CD84-H1; MGC88194; SF2001; slamf9; SLAMF9; SLAF9_HUMAN.
Organism Species:	Rabbit
Clonality:	Polyclonal
React Species:	Human,Mouse,
Applications:	WB=1:500-2000ELISA=1:500-1000IHC-P=1:400-800IHC-F=1:400-800Flow-Cyt=1µg/TestIF=1:100-500 (Paraffin sections need antigen repair) not yet tested in other applications. optimal dilutions/concentrations should be determined by the end user.
Molecular weight:	30kDa
Cellular localization:	The cell membrane
Form:	Lyophilized or Liquid
Concentration:	1mg/ml
immunogen:	KLH conjugated synthetic peptide derived from human SLAMF9:51-150/289<Extracellular>
Lsotype:	IgG
Purification:	affinity purified by Protein A
Storage Buffer:	0.01M TBS(pH7.4) with 1% BSA, 0.03% Proclin300 and 50% Glycerol.
Storage:	Store at -20 °C for one year. Avoid repeated freeze/thaw cycles. The lyophilized antibody is stable at room temperature for at least one month and for greater than a year when kept at -20°C. When reconstituted in sterile pH 7.4 0.01M PBS or diluent of antibody the antibody is stable for at least two weeks at 2-4 °C.
PubMed:	PubMed
Product Detail:	This gene encodes a member of the signaling lymphocytic activation molecule family. May play a role in the immune response. The encoded protein is a cell surface molecule that consists of two extracellular immunoglobulin domains, a transmembrane domain and a short cytoplasmic tail that lacks the signal transduction motifs found in other

family members. Alternative splicing results in multiple transcript variants. Expression is predominantly restricted in hematopoietic tissues. Expressed in heart, spleen, liver, intestine, muscle and testis. Expressed in immune cells, including monocytes, dendritic, B- and T-cells. No expression was seen in peripheral blood leukocytes. Expressed in the leukocyte cell line THP1-macrophage.

Function:

May play a role in the immune response.

Subcellular Location:

Membrane; Single-pass type I membrane protein.

Tissue Specificity:

Expression is predominantly restricted in hematopoietic tissues. Expressed in heart, spleen, liver, intestine, muscle and testis. Expressed in immune cells, including monocytes, dendritic, B- and T-cells. No expression was seen in peripheral blood leukocytes. Expressed in the leukocyte cell line THP1-macrophage.

Similarity:

Contains 1 Ig-like C2-type (immunoglobulin-like) domain.

SWISS:

Q96A28

Gene ID:

89886

Database links:

[Entrez Gene: 89886](#)Human

[Entrez Gene: 98365](#)Mouse

[Entrez Gene: 289235](#)Rat

[Omim: 608589](#)Human

[SwissProt: Q96A28](#)Human

[SwissProt: Q9D780](#)Mouse

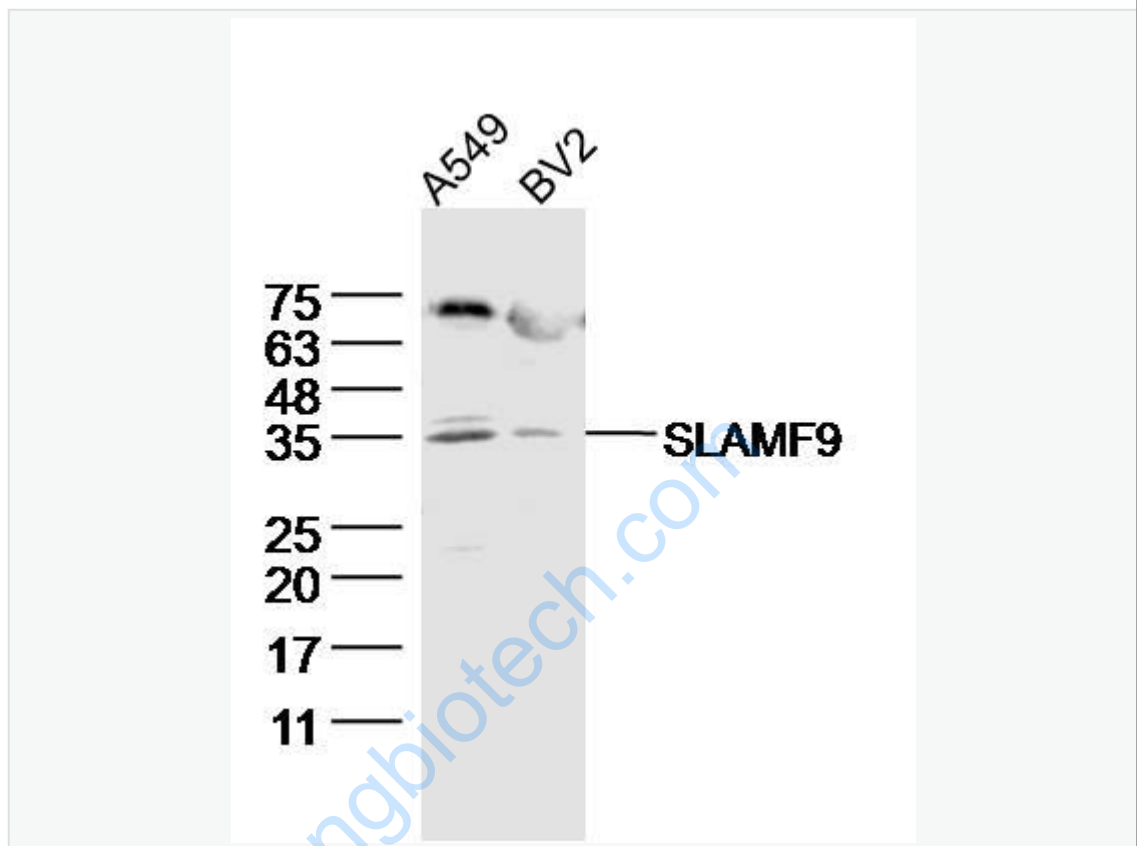
[Unigene: 661712](#)Human

[Unigene: 150050](#)Mouse

Important Note:

This product as supplied is intended for research use only, not for use in human, therapeutic or diagnostic applications.

Picture:



Sample:

A549 (human)cell Lysate at 40 ug

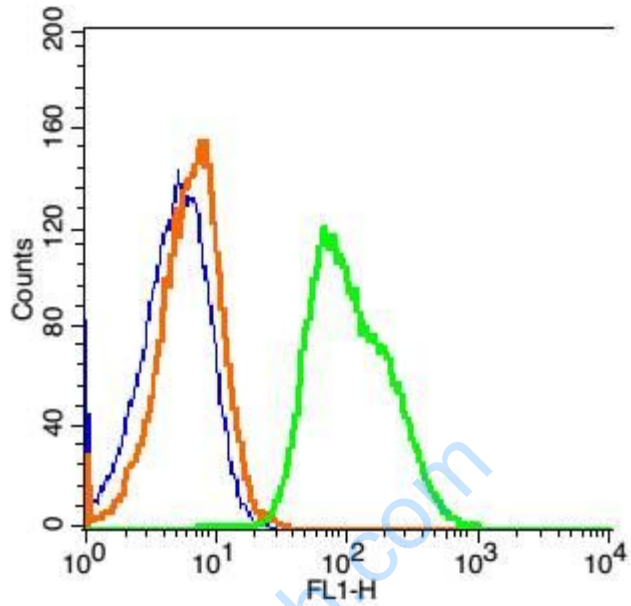
BV2 (mouse)cell Lysate at 40 ug

Primary: Anti- SLAMF9 (SL2486R)at 1/300 dilution

Secondary: IRDye800CW Goat Anti-Rabbit IgG at 1/20000 dilution

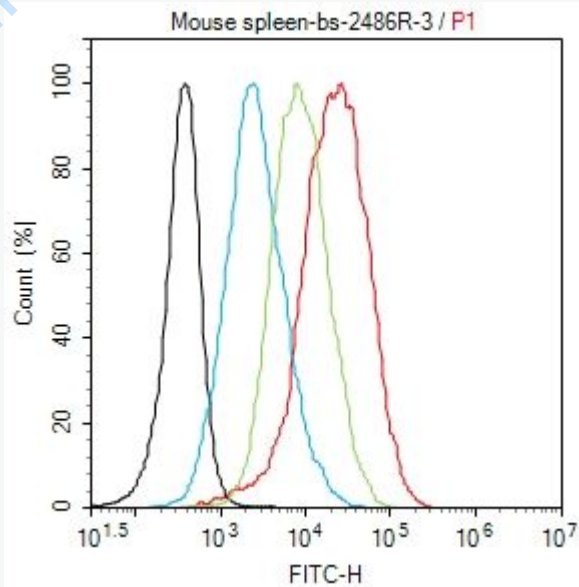
Predicted band size: 30kD

Observed band size: 35 kD



Blank control: (mo)splenocytes(blue)

Isotype Control Antibody: Rabbit IgG-FITC(orange) ; Primary Antibody Dilution:
 1 μ l in 100 μ L 1X PBS containing 0.5% BSA(green).



Blank control (black line): Raji (black) (The cells were fixed with 2%

paraformaldehyde (10 min) , then permeabilized with PBST for 30 min on room

temperature)

Primary Antibody (red line): Rabbit Anti-SLAMF9 antibody (SL2486R) ; Dilution:
1 μ g / 10^6 cells;

Isotype Control Antibody (green line): Rabbit IgG .

Secondary Antibody (white blue line): Goat anti-rabbit IgG-FITC; Dilution: 1 μ g
/test.

www.sunlongbiotech.com