



## Rabbit Anti-CD23 antibody

SL2490R

<b>Product Name:</b>	CD23
<b>Chinese Name:</b>	CD23/FcεRII抗体
<b>Alias:</b>	Fc EpsilonR II; FcεRII; Blast 2; Blast2; C type lectin domain family 4 member J; C-type lectin domain family 4, member J; CD 23; CD 23A; CD23 antigen; CD23A; CLEC 4J; CLEC4J; Fc epsilon RII; Fc fragment of IgE low affinity II receptor for; Fc fragment of IgE, low affinity II, receptor for (CD23); Fc of IgE, low affinity II, receptor for (CD23); Fc receptor IgE low affinity II alpha polypeptide; Fc receptor, IgE, low affinity II, alpha polypeptide, isoform CRA_a; FCE 2; FCE2; FCER 2; FCER2; FCER2A; IgE binding factor; IgE receptor lymphocyte; IgE-binding factor; IGEBF; Immunoglobulin E binding factor; Immunoglobulin E receptor, low affinity II; Low affinity immunoglobulin epsilon Fc receptor; Low affinity immunoglobulin epsilon Fc receptor membrane bound form; Low affinity immunoglobulin epsilon Fc receptor soluble form; Ly-42; Ly42; Lymphocyte antigen CD23; Lymphocyte IgE receptor; MGC93219.
<b>Organism Species:</b>	Rabbit
<b>Clonality:</b>	Polyclonal
<b>React Species:</b>	Human,Mouse,Rat,Horse,Rabbit,
<b>Applications:</b>	WB=1:500-2000ELISA=1:500-1000Flow-Cyt=1μg/Test not yet tested in other applications. optimal dilutions/concentrations should be determined by the end user.
<b>Molecular weight:</b>	36kDa
<b>Cellular localization:</b>	The cell membraneSecretory protein
<b>Form:</b>	Lyophilized or Liquid
<b>Concentration:</b>	1mg/ml
<b>immunogen:</b>	KLH conjugated synthetic peptide derived from human CD23:221-321/321<Extracellular>
<b>Lsotype:</b>	IgG
<b>Purification:</b>	affinity purified by Protein A
<b>Storage Buffer:</b>	0.01M TBS(pH7.4) with 1% BSA, 0.03% Proclin300 and 50% Glycerol.
<b>Storage:</b>	Store at -20 °C for one year. Avoid repeated freeze/thaw cycles. The lyophilized antibody is stable at room temperature for at least one month and for greater than a year

	when kept at -20°C. When reconstituted in sterile pH 7.4 0.01M PBS or diluent of antibody the antibody is stable for at least two weeks at 2-4 °C.
<b>PubMed:</b>	<a href="#">PubMed</a>
<b>Product Detail:</b>	<p>The CD23 antigen is the low affinity IgE Fc receptor, which is a 49 kDa protein with 38 and 28 kDa fragments. It is expressed on most mature, conventional B cells (but not on peritoneal CD5+ B cells), and can also be found on the surface of T cells, macrophages, platelets and EBV transformed B lymphoblasts. Expression of CD23 has been detected in neoplastic cells from cases of B cell chronic Lymphocytic leukemia. CD23 is expressed by B cells in the follicular mantle but not by proliferating germinal centre cells. CD23 is also expressed by eosinophils. CD23 is distinct from the high affinity IgE receptors found on basophils and mast cells, which mediate allergic reactions. The low affinity receptors are thought to play a role in isotype specific immunoregulation. The regulation of CD23 surface expression appears to be integral with the complex IgE system, which involves interactions of cells, cytokines, antibodies and regulatory factors. CD23 has been described as a “membrane bound cytokine,” in that the soluble cleavage products of CD23 are themselves able to act as cytokines in vitro.</p> <p><b>Function:</b> Low-affinity receptor for immunoglobulin E (IgE) and CR2/CD21. Has essential roles in the regulation of IgE production and in the differentiation of B-cells (it is a B-cell-specific antigen).</p> <p><b>Subcellular Location:</b> Cell membrane; Single-pass type II membrane protein. Secreted. Note=Also exists as a soluble excreted form.</p> <p><b>Post-translational modifications:</b> N- and O-glycosylated.</p> <p><b>Similarity:</b> Contains 1 C-type lectin domain.</p> <p><b>SWISS:</b> P06734</p> <p><b>Gene ID:</b> 2208</p> <p><b>Database links:</b> <a href="#">Entrez Gene: 2208</a>Human <a href="#">Entrez Gene: 14128</a>Mouse <a href="#">Omim: 151445</a>Human <a href="#">SwissProt: P06734</a>Human</p>

[SwissProt: P20693](#)Mouse

[Unigene: 465778](#)Human

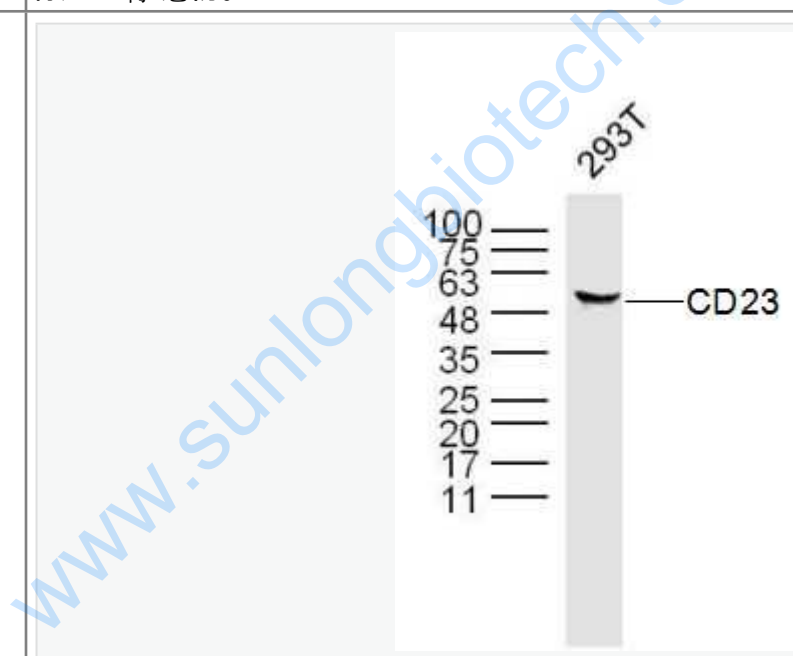
[Unigene: 1233](#)Mouse

**Important Note:**

This product as supplied is intended for research use only, not for use in human, therapeutic or diagnostic applications.

CD23是一种II型跨膜glycoprotein, 是存在于B细胞表面的IgE受体。在慢性Blymphocyte白血病(CLL)和小B细胞淋巴瘤(SLL)为阳性, 套细胞淋巴瘤和小核裂lymphocyte淋巴瘤阴性。也表达于外周血B细胞的某些亚型、Blymphocyte和EB病毒转染的B淋巴瘤细胞系。CD23是慢性Blymphocyte白血病, 小B细胞淋巴瘤诊断和鉴别诊断有用的标记物。

Picture:



Sample:

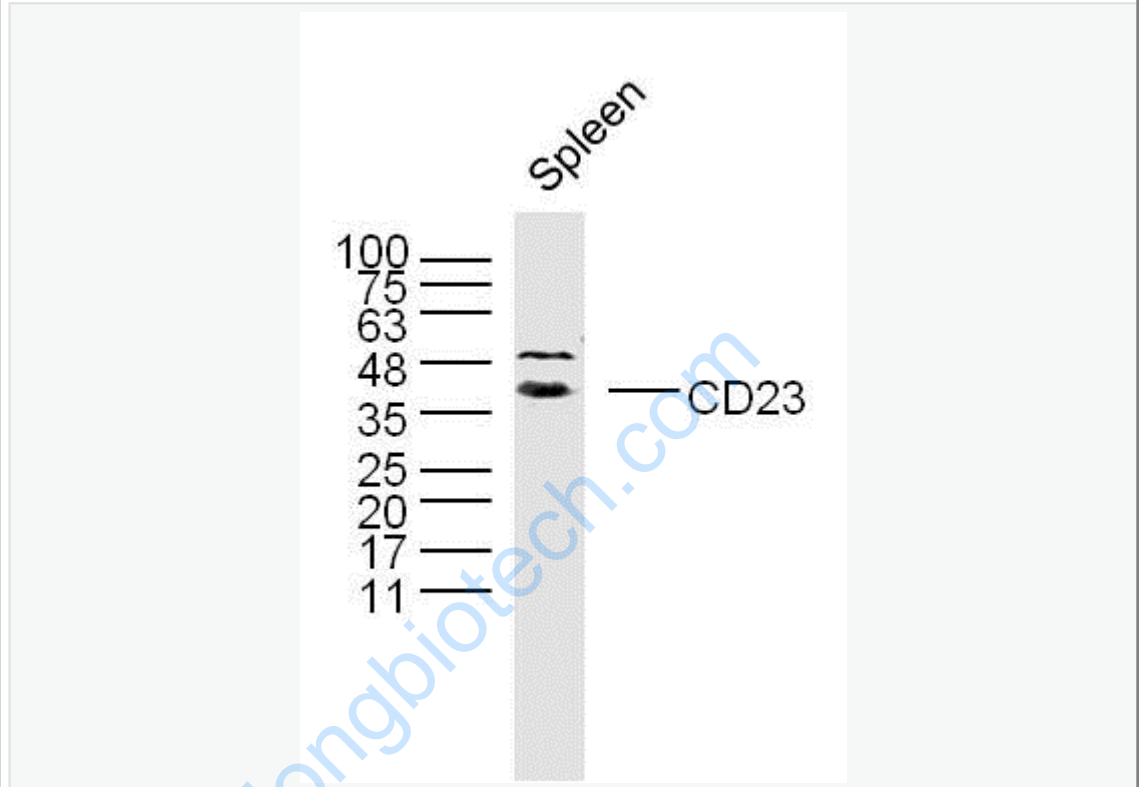
293T Cell (Human) Lysate at 30 ug

Primary: Anti- CD23 (SL2490R) at 1/300 dilution

Secondary: IRDye800CW Goat Anti-Rabbit IgG at 1/20000 dilution

Predicted band size: 36 kD

Observed band size: 50/40 kD



Sample:

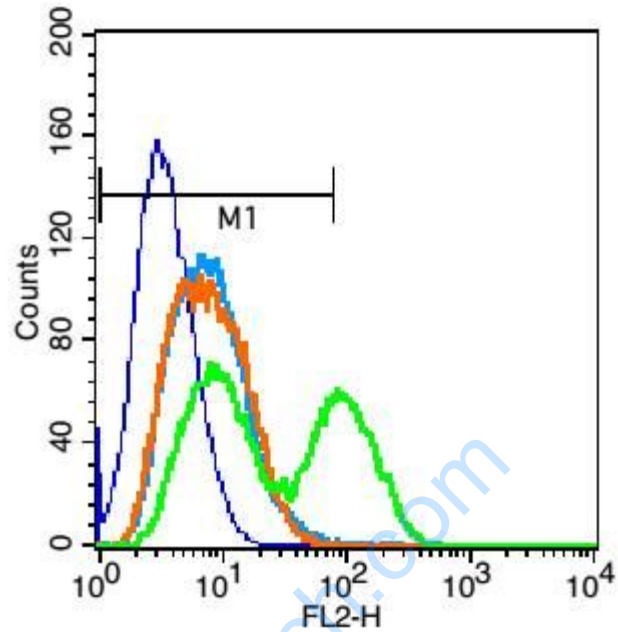
Spleen (Mouse) Lysate at 40 ug

Primary: Anti- CD23 (SL2490R) at 1/300 dilution

Secondary: IRDye800CW Goat Anti-Rabbit IgG at 1/20000 dilution

Predicted band size: 36 kD

Observed band size: 50/40 kD



Blank control(blue):Raji cells (fixed with 2% paraformaldehyde (10 min)).

Primary Antibody:Rabbit Anti- CD23 antibody(SL2490R), Dilution: 1 $\mu$ g in 100  $\mu$ L  
1X PBS containing 0.5% BSA;

Isotype Control Antibody: Rabbit IgG(orange) ,used under the same conditions );

Secondary Antibody: Goat anti-rabbit IgG-PE(white blue), Dilution: 1:200 in 1 X  
PBS containing 0.5% BSA.