



Rabbit Anti-CD11c antibody

SL2508R

| | |
|-------------------------|---|
| Product Name: | CD11c |
| Chinese Name: | 整合素 α X抗体 |
| Alias: | Integrin alpha-X; integrin alpha-X precursor; ITGAX; CD11C; SLEB6; CD11C (p150) alpha polypeptide; complement receptor 4; integrin α X; CD11 antigen-like family member C; leukocyte adhesion receptor p150,95; leukocyte adhesion glycoprotein p150,95 alpha chain; ITAX HUMAN. |
| 文献引用 PubMed : | <p>Specific References(4) SL2508R has been referenced in 4 publications.</p> <p>[IF=7.27]Zhang, Xinwen, et al. "Peripheral Role of Cathepsin S in Th1 Cell-Dependent Transition of Nerve Injury-Induced Acute Pain to a Chronic Pain State." The Journal of Neuroscience 34.8 (2014): 3013-3022.Rat. PubMed:24553941</p> <p>[IF=3.88]Di Filippo, C., et al. "Involvement of Proteasome and Macrophages M2 in the Protection Afforded by Telmisartan against the Acute Myocardial Infarction in Zucker Diabetic Fatty Rats with Metabolic Syndrome." Mediators of Inflammation 2014 (2014).IHC-P;Rat. PubMed:25110402</p> <p>[IF=2.16]Ju, Huanyu, et al. "An effective cytokine adjuvant vaccine induces autologous T-cell response against colon cancer in an animal model." BMC immunology 17.1 (2016): 31.IHC-P;Mouse. PubMed:27669687</p> <p>[IF=4.92]Ahn, Jeonghyun, Phillip Ruiz, and Glen N. Barber. "Intrinsic self-DNA triggers inflammatory disease dependent on STING." The Journal of Immunology 193.9 (2014): 4634-4642.IHC-P;Mouse.</p> |

| | |
|-------------------------------|---|
| | PubMed:25261479 |
| Organism Species: | Rabbit |
| Clonality: | Polyclonal |
| React Species: | Human, Mouse, Rat, Dog, |
| Applications: | ELISA=1:500-1000 Flow-Cyt=1µg/Test IF=1:200-800 not yet tested in other applications. optimal dilutions/concentrations should be determined by the end user. |
| Molecular weight: | 126kDa |
| Cellular localization: | The cell membrane |
| Form: | Lyophilized or Liquid |
| Concentration: | 1mg/ml |
| immunogen: | KLH conjugated synthetic peptide derived from human Integrin Alpha X:501-600/1163 |
| Lsotype: | IgG |
| Purification: | affinity purified by Protein A |
| Storage Buffer: | 0.01M TBS(pH7.4) with 1% BSA, 0.03% Proclin300 and 50% Glycerol. |
| Storage: | Store at -20 °C for one year. Avoid repeated freeze/thaw cycles. The lyophilized antibody is stable at room temperature for at least one month and for greater than a year when kept at -20°C. When reconstituted in sterile pH 7.4 0.01M PBS or diluent of antibody the antibody is stable for at least two weeks at 2-4 °C. |
| PubMed: | PubMed |
| Product Detail: | <p>This gene encodes the integrin alpha X chain protein. Integrins are heterodimeric integral membrane proteins composed of an alpha chain and a beta chain. This protein combines with the beta 2 chain (ITGB2) to form a leukocyte-specific integrin referred to as inactivated-C3b (iC3b) receptor 4 (CR4). The alpha X beta 2 complex seems to overlap the properties of the alpha M beta 2 integrin in the adherence of neutrophils and monocytes to stimulated endothelium cells, and in the phagocytosis of complement coated particles. [provided by RefSeq].</p> <p>Function: Integrin alpha-X/beta-2 is a receptor for fibrinogen. It recognizes the sequence G-P-R in fibrinogen. It mediates cell-cell interaction during inflammatory responses. It is especially important in monocyte adhesion and chemotaxis.</p> <p>Subunit: Belongs to the integrin alpha chain family. Contains 7 FG-GAP repeats. Contains 1 VWFA domain.</p> <p>Subcellular Location: Membrane.</p> <p>Tissue Specificity: Predominantly expressed in monocytes and granulocytes.</p> <p>Similarity: Belongs to the integrin alpha chain family.</p> |

Contains 7 FG-GAP repeats.
Contains 1 VWFA domain.

SWISS:
P20702

Gene ID:
3687

Database links:

[Entrez Gene: 3687](#)Human

[Entrez Gene: 16411](#)Mouse

[Entrez Gene: 499271](#)Rat

[Omim: 151510](#)Human

[SwissProt: P20702](#)Human

[SwissProt: Q9QXH4](#)Mouse

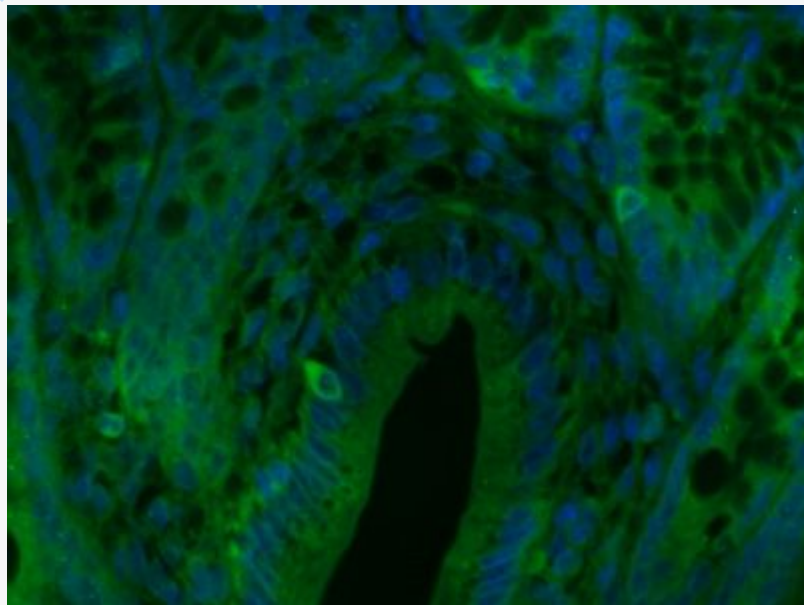
[Unigene: 248472](#)Human

[Unigene: 22378](#)Mouse

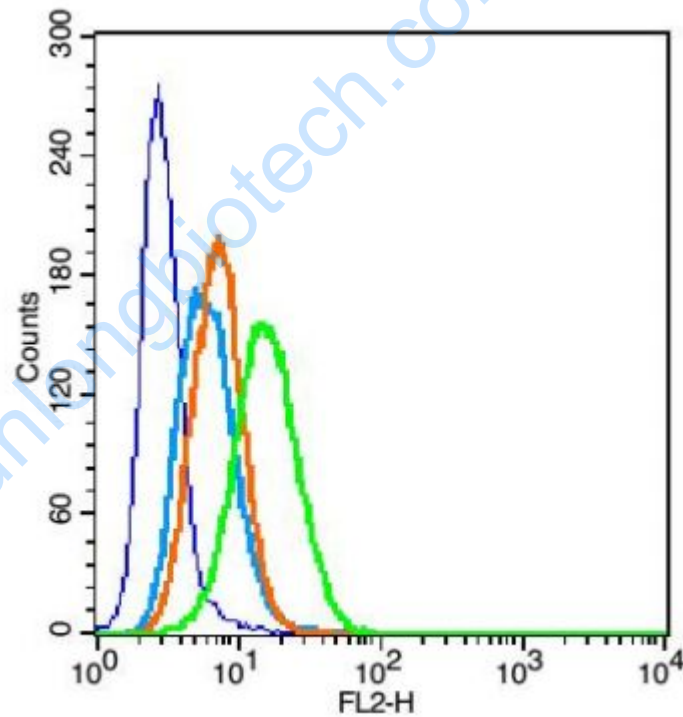
Important Note:

This product as supplied is intended for research use only, not for use in human, therapeutic or diagnostic applications.

Picture:



Paraformaldehyde-fixed, paraffin embedded (Rat colon); Antigen retrieval by boiling in sodium citrate buffer (pH6.0) for 15min; Block endogenous peroxidase by 3% hydrogen peroxide for 20 minutes; Blocking buffer (normal goat serum) at 37°C for 30min; Antibody incubation with (CD11c) Polyclonal Antibody, Unconjugated (SL2508R) at 1:400 overnight at 4°C, followed by a conjugated Goat Anti-Rabbit IgG antibody (SL2508R) for 90 minutes, and DAPI for nuclei staining.



Blank control (blue): U937 cells(fixed with 2% paraformaldehyde (10 min)).

Primary Antibody:Rabbit Anti-CD11c antibody(SL2508R), Dilution: 1µg in 100 µL
1X PBS containing 0.5% BSA;

Isotype Control Antibody: Rabbit IgG(orange) used under the same conditions);

Secondary Antibody: Goat anti-rabbit IgG-PE(white blue), Dilution: 1:200 in 1 X

| | |
|--|--------------------------|
| | PBS containing 0.5% BSA. |
|--|--------------------------|

www.sunlongbiotech.com