



## Rabbit Anti-CD2 antibody

SL2515R

<b>Product Name:</b>	CD2
<b>Chinese Name:</b>	CD2抗体
<b>Alias:</b>	T-cell surface antigen CD2; CD 2; CD2 antigen; CD2 molecule; LFA2; LFA3 receptor; Lymphocyte function antigen 2; p50; Rosette receptor; Sheep erythrocyte receptor; Sheep red blood cell receptor; SRBC; T cell surface antigen CD2; T cell surface antigen T11/Leu 5; T11; CD2 HUMAN.
<b>Organism Species:</b>	Rabbit
<b>Clonality:</b>	Polyclonal
<b>React Species:</b>	Human,Mouse,Rat,Dog,Pig,Horse,
<b>Applications:</b>	WB=1:500-2000ELISA=1:500-1000IHC-P=1:400-800IHC-F=1:400-800Flow-Cyt=3ug/TestIF=1:100-500 (Paraffin sections need antigen repair) not yet tested in other applications. optimal dilutions/concentrations should be determined by the end user.
<b>Molecular weight:</b>	37kDa
<b>Cellular localization:</b>	The cell membrane
<b>Form:</b>	Lyophilized or Liquid
<b>Concentration:</b>	1mg/ml
<b>immunogen:</b>	KLH conjugated synthetic peptide derived from human CD2:281-351/351
<b>Lsotype:</b>	IgG
<b>Purification:</b>	affinity purified by Protein A
<b>Storage Buffer:</b>	0.01M TBS(pH7.4) with 1% BSA, 0.03% Proclin300 and 50% Glycerol.
<b>Storage:</b>	Store at -20 °C for one year. Avoid repeated freeze/thaw cycles. The lyophilized antibody is stable at room temperature for at least one month and for greater than a year when kept at -20°C. When reconstituted in sterile pH 7.4 0.01M PBS or diluent of antibody the antibody is stable for at least two weeks at 2-4 °C.
<b>PubMed:</b>	<a href="#">PubMed</a>
<b>Product Detail:</b>	CD2 is a surface antigen of the human T lymphocyte lineage that is expressed on all peripheral blood T cells. It is one of the earliest T cell markers, being present on more than 95% of thymocytes; it is also found on some natural killer cells but not on B lymphocytes.

CD2 interacts with lymphocyte function associated antigen (LFA3) and CD48/BCM1 to mediate adhesion between T cells and other cell types. CD2 is implicated in the triggering of T cells, the cytoplasmic domain is implicated in the signaling function. It is useful for the identification of lymphomas and leukaemias of T cell origin.

**Function:**

CD2 interacts with lymphocyte function-associated antigen (LFA-3) and CD48/BCM1 to mediate adhesion between T-cells and other cell types. CD2 is implicated in the triggering of T-cells, the cytoplasmic domain is implicated in the signaling function.

**Subunit:**

Interacts with CD2AP. Interacts with PSTPIP1.

**Subcellular Location:**

Membrane; Single-pass type I membrane protein.

**Similarity:**

Contains 1 Ig-like C2-type (immunoglobulin-like) domain.

Contains 1 Ig-like V-type (immunoglobulin-like) domain.

**SWISS:**

P06729

**Gene ID:**

914

**Database links:**

[Entrez Gene: 914](#)Human

[Entrez Gene: 12481](#)Mouse

[Entrez Gene: 497761](#)Rat

[Ommim: 186990](#)Human

[SwissProt: P06729](#)Human

[SwissProt: P08920](#)Mouse

[SwissProt: P08921](#)Rat

[Unigene: 523500](#)Human

[Unigene: 22842](#)Mouse

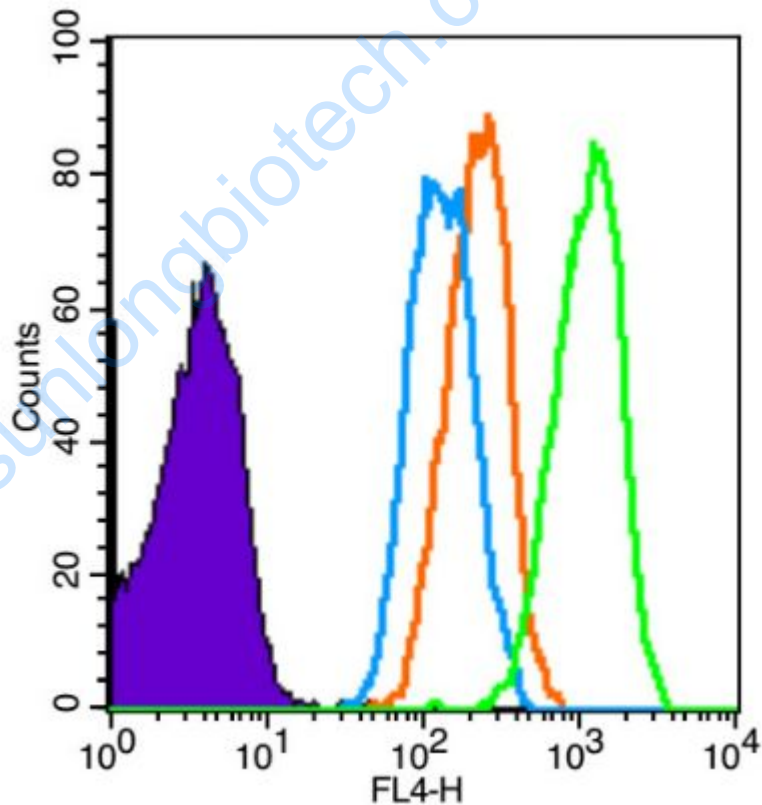
[Unigene: 10328](#)Rat

**Important Note:**

This product as supplied is intended for research use only, not for use in human, therapeutic or diagnostic applications.

CD2分子又称T11、绵羊红细胞受体(ER)、lymphocyte功能相关抗原2(LFA-2)和Leu5, 是人Tlymphocyte表面的单链glycoprotein.CD2分子是分布于胸腺细胞及所有成熟Tlymphocyte和大部分Natural killer cells表面的特征性分化抗原。CD2具有调节Tlymphocyte分化、成熟、激活和凋亡等功能, CD2与LFA-3之间的粘附功能对于TlymphocyteTCR识别外来抗原与APC细胞表面MHC抗原复合物、Tumour抗原、病毒感染靶细胞以及同种异体抗原均有重要的辅助作用。最近研究表明, CD48和CD59也是CD2的配体, 参与T细胞的粘附和细胞间的相互作用,此外, CD2可以与其它膜分子如CD44、CD45的功能有关。CD2具有对T细胞的旁路激活途径作用。

Picture:



Blank control (Black line): Molt-4 (Black).

Primary Antibody (green line): Rabbit Anti-CD2 antibody (SL2515R)

Dilution: 1µg /10<sup>6</sup> cells;

Isotype Control Antibody (orange line): Rabbit IgG .

Secondary Antibody (white blue line): Goat anti-rabbit IgG-PE

Dilution: 1 $\mu$ g /test.

#### Protocol

The cells were fixed with 4% PFA (10min at room temperature)and then permeabilized with 90% ice-cold methanol for 20 min at room temperature. The cells were then incubated in 5%BSA to block non-specific protein-protein interactions for 30 min at room temperature .Cells stained with Primary Antibody for 30 min at room temperature. The secondary antibody used for 40 min at room temperature. Acquisition of 20,000 events was performed.