



Rabbit Anti-GTSE-1 antibody

SL2516R

Product Name:	GTSE-1
Chinese Name:	G2期/S期应答相关蛋白1抗体
Alias:	G2 and S phase-expressed protein 1; B99; B99 homolog; G 2 and S phase expressed 1; G two S phase expressed protein 1; GTSE 1; GTSE-1; GTSE1; GTSE1_HUMAN.
Organism Species:	Rabbit
Clonality:	Polyclonal
React Species:	Human,Mouse,Rat,Chicken,Pig,Cow,
Applications:	WB=1:500-2000ELISA=1:500-1000IHC-P=1:400-800IHC-F=1:400-800IF=1:100-500 (Paraffin sections need antigen repair) not yet tested in other applications. optimal dilutions/concentrations should be determined by the end user.
Molecular weight:	77kDa
Cellular localization:	cytoplasmic
Form:	Lyophilized or Liquid
Concentration:	1mg/ml
immunogen:	KLH conjugated synthetic peptide derived from human GTSE-1:651-739/739
Lsotype:	IgG
Purification:	affinity purified by Protein A
Storage Buffer:	0.01M TBS(pH7.4) with 1% BSA, 0.03% Proclin300 and 50% Glycerol.
Storage:	Store at -20 °C for one year. Avoid repeated freeze/thaw cycles. The lyophilized antibody is stable at room temperature for at least one month and for greater than a year when kept at -20°C. When reconstituted in sterile pH 7.4 0.01M PBS or diluent of antibody the antibody is stable for at least two weeks at 2-4 °C.
PubMed:	PubMed
Product Detail:	The protein encoded by this gene is only expressed in the S and G2 phases of the cell cycle, where it colocalizes with cytoplasmic tubulin and microtubules. In response to DNA damage, the encoded protein accumulates in the nucleus and binds the tumor suppressor protein p53, shuttling it out of the nucleus and repressing its ability to induce apoptosis. [provided by RefSeq, Jul 2008]

Function:

May be involved in p53-induced cell cycle arrest in G2/M phase by interfering with microtubule rearrangements that are required to enter mitosis. Overexpression delays G2/M phase progression.

Subcellular Location:

Cytoplasm, cytoskeleton. Note=Associated with microtubules.

Post-translational modifications:

Phosphorylated in mitosis.

Similarity:

Sequence=CAQ09324.2; Type=Erroneous initiation; Note=Translation N-terminally shortened; Sequence=CAQ10552.2; Type=Erroneous initiation; Note=Translation N-terminally shortened.

SWISS:

Q9NYZ3

Gene ID:

51512

Database links:

[Entrez Gene: 51512](#)Human

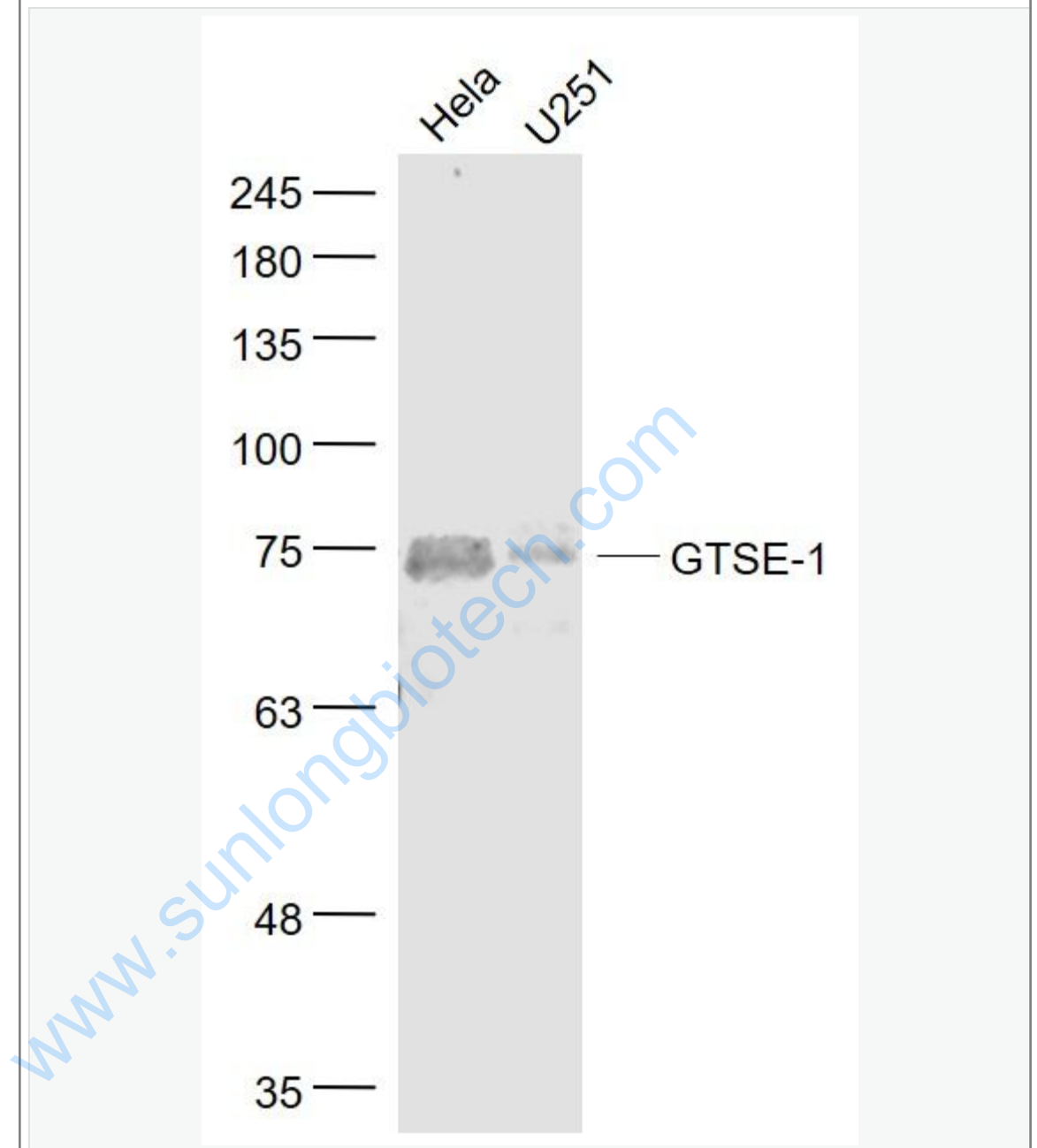
[Oimim: 607477](#)Human

[SwissProt: Q9NYZ3](#)Human

Important Note:

This product as supplied is intended for research use only, not for use in human, therapeutic or diagnostic applications.

Picture:



Sample:

HeLa(Human) Cell Lysate at 30 ug

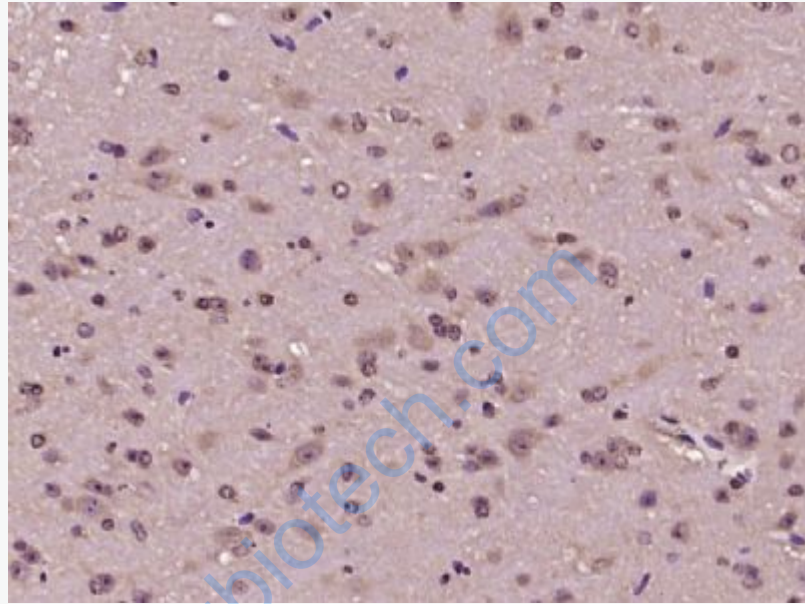
U251(Human) Cell Lysate at 30 ug

Primary: Anti- GTSE-1 (SL2516R) at 1/1000 dilution

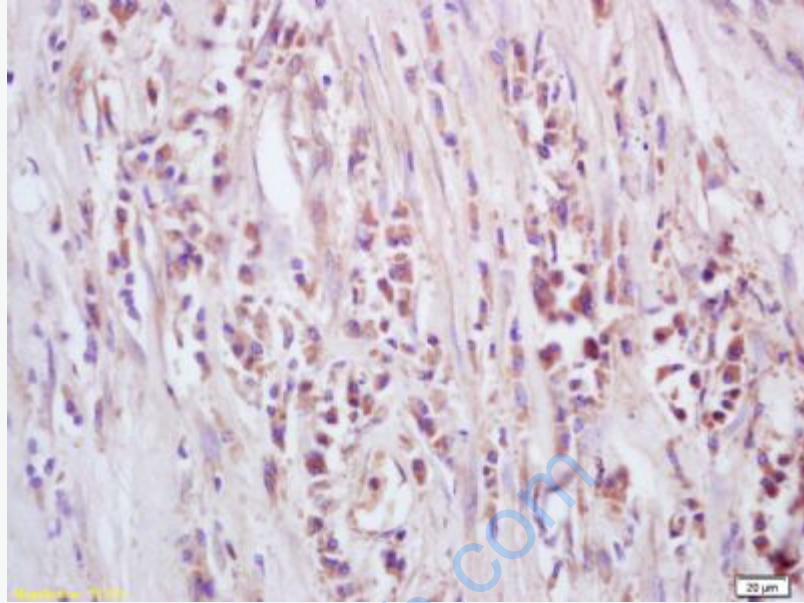
Secondary: IRDye800CW Goat Anti-Rabbit IgG at 1/20000 dilution

Predicted band size: 77 kD

Observed band size: 75 kD



Paraformaldehyde-fixed, paraffin embedded (mouse brain tissue); Antigen retrieval by boiling in sodium citrate buffer (pH6.0) for 15min; Block endogenous peroxidase by 3% hydrogen peroxide for 20 minutes; Blocking buffer (normal goat serum) at 37°C for 30min; Antibody incubation with (GTSE-1) Polyclonal Antibody, Unconjugated (SL2516R) at 1:400 overnight at 4°C, followed by operating according to SP Kit(Rabbit) (sp-0023) instructions and DAB staining.



Tissue/cell: Human lung cancer; 4% Paraformaldehyde-fixed and paraffin-embedded;

Antigen retrieval: citrate buffer (0.01M, pH 6.0), Boiling bathing for 15min; Block endogenous peroxidase by 3% Hydrogen peroxide for 30min; Blocking buffer (normal goat serum,C-0005) at 37°C for 20 min;

Incubation: Anti-GTSE-1 Polyclonal Antibody, Unconjugated(SL2516R) 1:200, overnight at 4°C, followed by conjugation to the secondary antibody(SP-0023) and DAB(C-0010) staining