



Rabbit Anti-CD151 antibody

SL2524R

Product Name:	CD151
Chinese Name:	CD151抗体
Alias:	CD151 antigen; CD151 molecule; GP27; Membrane glycoprotein SFA1; MER2; PETA3; Platelet endothelial tetraspan antigen 3; RAPH; SFA 1; SFA1; Tetraspanin24; TSPAN24; CD151_HUMAN; Platelet-endothelial tetraspan antigen 3; PETA-3; Tetraspanin-24; Tspan-24; CD151.
Organism Species:	Rabbit
Clonality:	Polyclonal
React Species:	Human,Mouse,Rat,Chicken,Cow,Horse,
Applications:	WB=1:500-2000ELISA=1:500-1000IHC-F=1:400-800Flow-Cyt=1µg/TestICC=1:100-500IF=1:100-500 (Paraffin sections need antigen repair) not yet tested in other applications. optimal dilutions/concentrations should be determined by the end user.
Molecular weight:	28kDa
Cellular localization:	The cell membrane
Form:	Lyophilized or Liquid
Concentration:	1mg/ml
immunogen:	KLH conjugated synthetic peptide derived from human CD151:101-200/253<Extracellular>
Lsotype:	IgG
Purification:	affinity purified by Protein A
Storage Buffer:	0.01M TBS(pH7.4) with 1% BSA, 0.03% Proclin300 and 50% Glycerol.
Storage:	Store at -20 °C for one year. Avoid repeated freeze/thaw cycles. The lyophilized antibody is stable at room temperature for at least one month and for greater than a year when kept at -20°C. When reconstituted in sterile pH 7.4 0.01M PBS or diluent of antibody the antibody is stable for at least two weeks at 2-4 °C.
PubMed:	PubMed
Product Detail:	The protein encoded by this gene is a member of the transmembrane 4 superfamily, also known as the tetraspanin family. Most of these members are cell-surface proteins that are characterized by the presence of four hydrophobic domains. The proteins mediate

signal transduction events that play a role in the regulation of cell development, activation, growth and motility. This encoded protein is a cell surface glycoprotein that is known to complex with integrins and other transmembrane 4 superfamily proteins. It is involved in cellular processes including cell adhesion and may regulate integrin trafficking and/or function. This protein enhances cell motility, invasion and metastasis of cancer cells. Multiple alternatively spliced transcript variants that encode the same protein have been described for this gene. [provided by RefSeq, Jul 2008].

Function:

Essential for the proper assembly of the glomerular and tubular basement membranes in kidney.

Subunit:

Interacts with integrins alpha3beta1, alpha5beta1, alpha3beta1 and alpha6beta4, with CD9 and CD181.

Subcellular Location:

Membrane; Multi-pass membrane protein.

Tissue Specificity:

Expressed in a variety of tissues including vascular endothelium and epidermis. Expressed on erythroid cells, with a higher level of expression in erythroid precursors than on mature erythrocytes.

DISEASE:

Nephropathy with pretibial epidermolysis bullosa and deafness (NPEBD) [MIM:609057]: A disorder characterized by the association of hereditary nephritis, epidermolysis bullosa, deafness, and beta-thalassemia minor. Note=The disease is caused by mutations affecting the gene represented in this entry.

Similarity:

Belongs to the tetraspanin (TM4SF) family.

SWISS:

P48509

Gene ID:

977

Database links:

[Entrez Gene: 977](#) Human

[Omir: 602243](#) Human

[SwissProt: P48509](#) Human

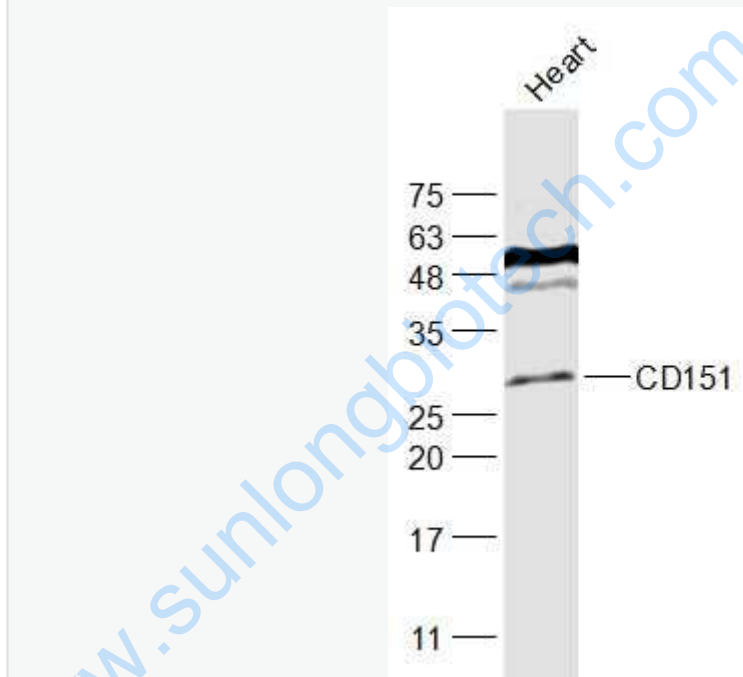
[Unigene: 654379](#) Human

Important Note:

This product as supplied is intended for research use only, not for use in human, therapeutic or diagnostic applications.

CD151蛋白是四跨膜超家族蛋白(transmembrane-4 superfamily, TM4SF)成员, 参与调节细胞的形态和极性、促进细胞黏附和迁移, 并在体外血管形成中发挥着重要作用, 该蛋白与血管新生有关。

Picture:



Sample:

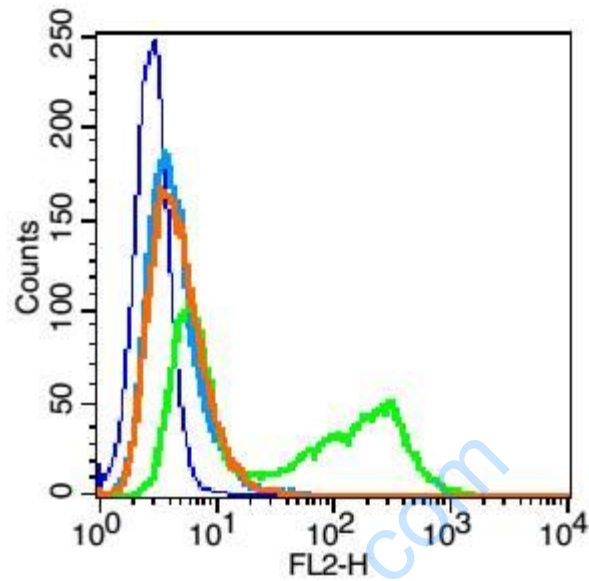
Heart (Mouse) Lysate at 40 ug

Primary: Anti-CD151 (SL2524R) at 1/1000 dilution

Secondary: IRDye800CW Goat Anti-Rabbit IgG at 1/20000 dilution

Predicted band size: 28 kD

Observed band size: 28 kD



Blank control(Blue): HUVEC cells(fixed with 2% paraformaldehyde (10 min)).

Primary Antibody:Rabbit Anti-CD31 antibody(SL2524R), Dilution: 1 μ g in 100 μ L
1X PBS containing 0.5% BSA;

Isotype Control Antibody: Rabbit IgG(orange),used under the same conditions);

Secondary Antibody: Goat anti-rabbit IgG-PE(white blue), Dilution: 1:200 in 1 X
PBS containing 0.5% BSA.