



## Rabbit Anti-NES/Kallikrein 10 antibody

SL2531R

<b>Product Name:</b>	NES/Kallikrein 10
<b>Chinese Name:</b>	epithelial cells特异性蛋白1抗体
<b>Alias:</b>	Kallikrein 10; Breast normal epithelial cell associated serine protease; Kallikrein related peptidase 10; KLK 10; KLK10; KLK10_HUMAN; NES 1; NES1; Normal epithelial cell specific 1; Protease serine like 1; PRSS L1; PRSSL 1; PRSSL1.
<b>文献引用</b> <b>PubMed</b> :	<b>Specific References(1)</b>  SL2531R has been referenced in 1 publications. <b>[IF=2.30]</b> Li, Lei, et al. "Upregulated KLK10 inhibits esophageal cancer proliferation and enhances cisplatin sensitivity in vitro." Oncology Reports. <b>WB</b> ; <a href="https://pubmed.ncbi.nlm.nih.gov/26479703/">PubMed:26479703</a>
<b>Organism Species:</b>	Rabbit
<b>Clonality:</b>	Polyclonal
<b>React Species:</b>	Human,Mouse,Rat,Cow,
<b>Applications:</b>	WB=1:500-2000ELISA=1:500-1000IHC-F=1:400-800IF=1:100-500 (Paraffin sections need antigen repair) not yet tested in other applications. optimal dilutions/concentrations should be determined by the end user.
<b>Molecular weight:</b>	31kDa
<b>Cellular localization:</b>	Secretory protein
<b>Form:</b>	Lyophilized or Liquid
<b>Concentration:</b>	1mg/ml
<b>immunogen:</b>	KLH conjugated synthetic peptide derived from human KLK10:65-165276
<b>Lsotype:</b>	IgG
<b>Purification:</b>	affinity purified by Protein A
<b>Storage Buffer:</b>	0.01M TBS(pH7.4) with 1% BSA, 0.03% Proclin300 and 50% Glycerol.
<b>Storage:</b>	Store at -20 °C for one year. Avoid repeated freeze/thaw cycles. The lyophilized antibody is stable at room temperature for at least one month and for greater than a year when kept at -20°C. When reconstituted in sterile pH 7.4 0.01M PBS or diluent of

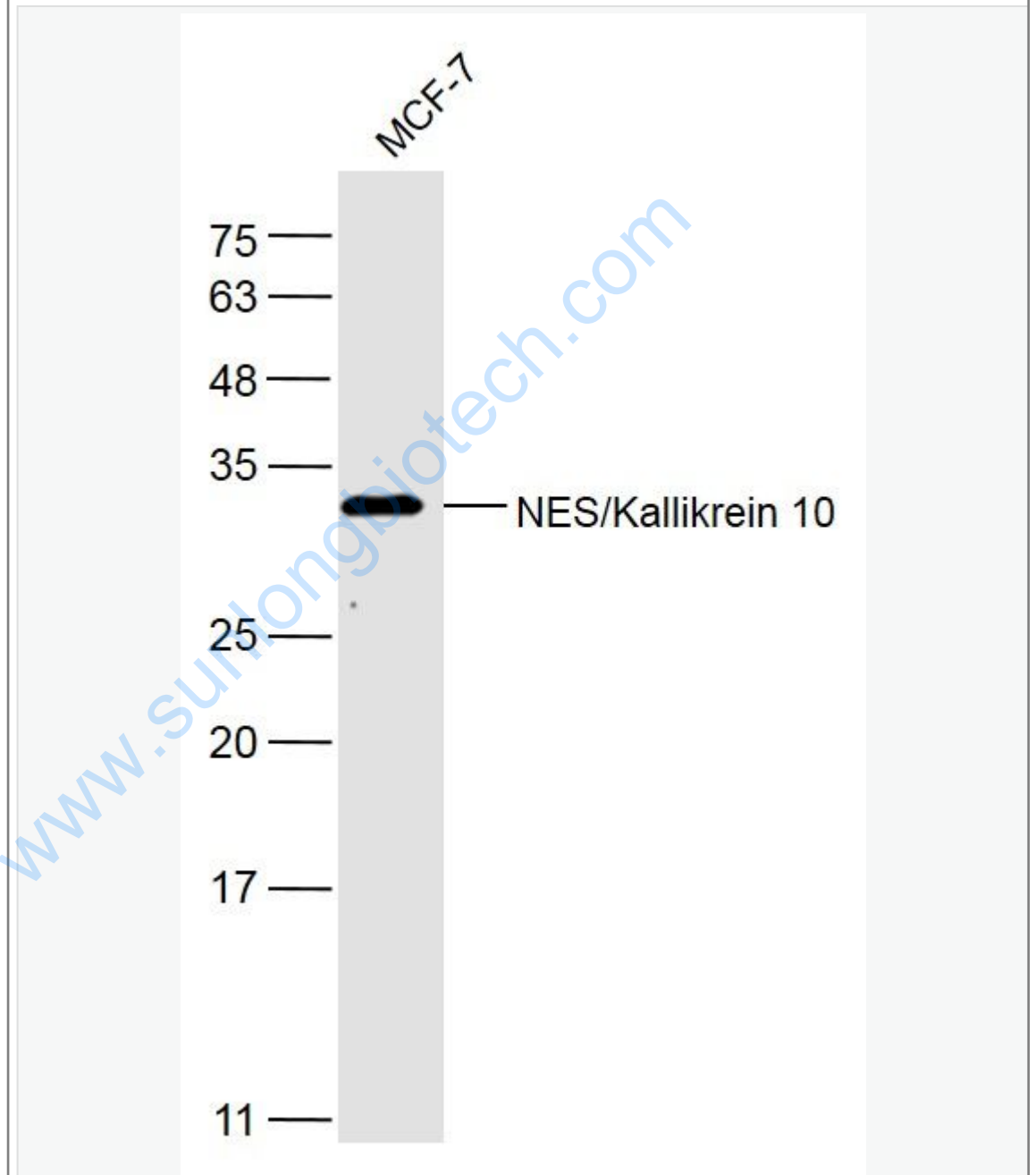
	antibody the antibody is stable for at least two weeks at 2-4 °C.
<b>PubMed:</b>	<a href="#">PubMed</a>
<b>Product Detail:</b>	<p>Kallikrein 10 is a trypsin-like serine proteinase. Originally described from a subtractive library looking for genes that were down-regulated in breast cancer, kallikrein 10 was thought to be epithelial cell specific. Kallikrein 10 is reported to be up regulated in pancreatic cancer and ovarian cancer, but down regulated in testicular cancer and breast cancer, perhaps due to differential hormonal regulation, or tissue specificities. Breast cancer patients that had elevated kallikrein 10 had a worse prognosis, leading to speculation that kallikrein 10 might be protective in breast cancer, similar to the argument put forth for kallikrein 3 in prostate cancer. Kallikrein 10 is found in high levels in the pancreas and in lower levels in the tonsils, esophagus, skin, brain, testis and ovary. Biological fluids (breast milk, serum, seminal plasma, urine) contain kallikrein 10, the highest levels found in milk. The cerebral spinal fluid (CSF) contains Kallikrein 10, and was reported to be elevated in patients with Alzheimer's disease. Endogenous inhibitors include kallistatin, protein-C inhibitor and 1-proteinase inhibitor, although Kallikrein 10 can be found complexed to a number of different proteinase inhibitors.</p> <p><b>Function:</b> Has a tumor-suppressor role for NES1 in breast and prostate cancer.</p> <p><b>Subcellular Location:</b> Secreted.</p> <p><b>Tissue Specificity:</b> Expressed in breast, ovary and prostate.</p> <p><b>Similarity:</b> Belongs to the peptidase S1 family. Kallikrein subfamily. Contains 1 peptidase S1 domain.</p> <p><b>SWISS:</b> O43240</p> <p><b>Gene ID:</b> 5655</p> <p><b>Database links:</b> <a href="#">Entrez Gene: 5655</a>Human <a href="#">Oimim: 602673</a>Human <a href="#">SwissProt: O43240</a>Human <a href="#">Unigene: 275464</a>Human</p>

**Important Note:**

This product as supplied is intended for research use only, not for use in human, therapeutic or diagnostic applications.

KLK10是组织激肽释放酶基因家族的重要成员,是当前研究较热的Tumour生物学Marker之一,在多种与内分泌相关的Tumour中有较特异性的表达。

Picture:



Sample:

MCF-7(Human) Cell Lysate at 30 ug

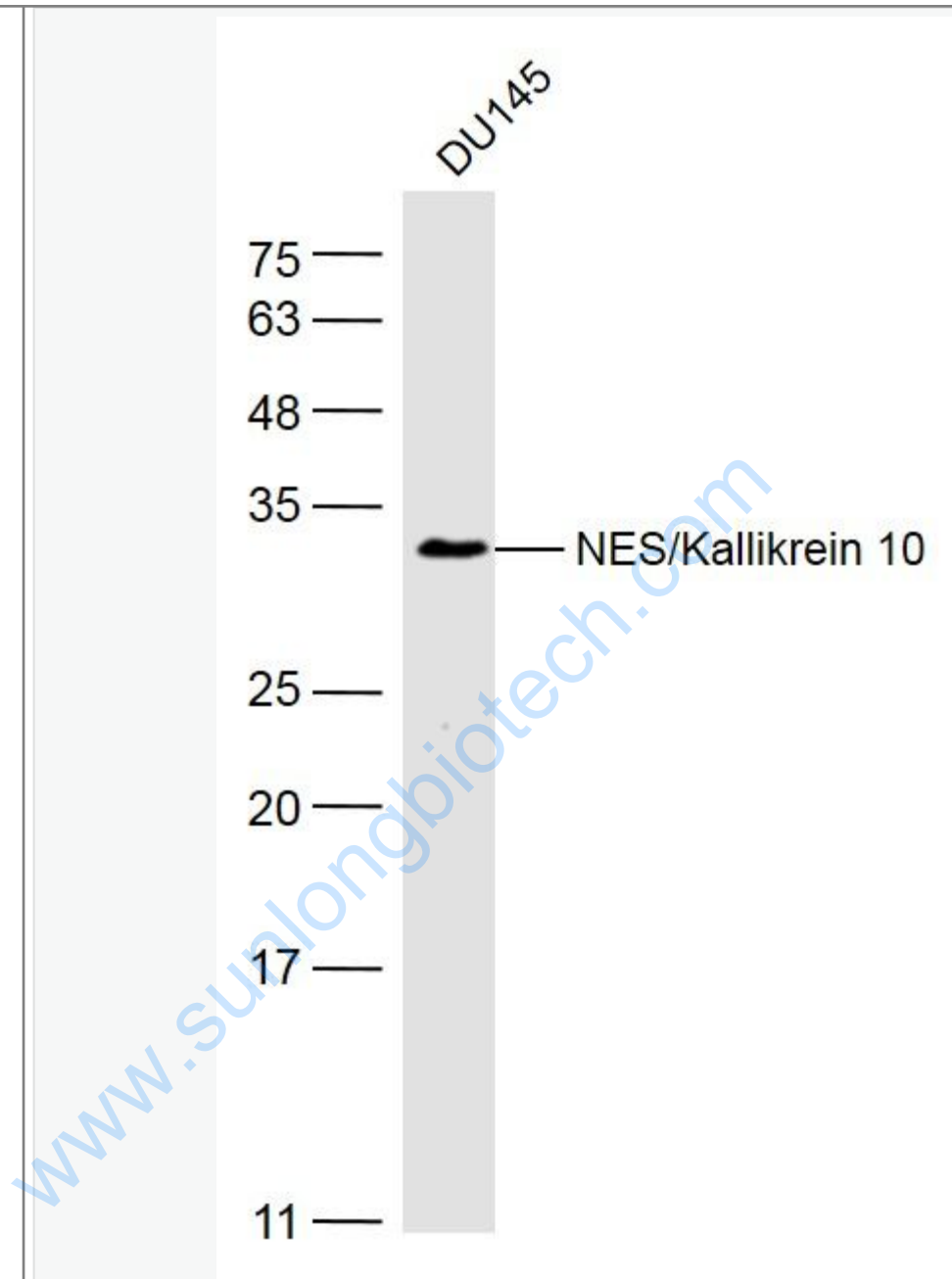
Primary: Anti-NES/Kallikrein 10 (SL2531R) at 1/300 dilution

Secondary: IRDye800CW Goat Anti-Rabbit IgG at 1/20000 dilution

Predicted band size: 31 kD

Observed band size: 31 kD

[www.sunlongbiotech.com](http://www.sunlongbiotech.com)



Sample:

DU145(Human) Cell Lysate at 30 ug

Primary: Anti-NES/Kallikrein 10 (SL2531R) at 1/300 dilution

Secondary: IRDye800CW Goat Anti-Rabbit IgG at 1/20000 dilution

Predicted band size: 31 kD

	Observed band size: 31 kD
--	---------------------------

[www.sunlongbiotech.com](http://www.sunlongbiotech.com)