



Rabbit Anti-ALT1 antibody

SL2532R

Product Name:	ALT1
Chinese Name:	谷丙氨酸氨基转移酶1抗体
Alias:	Alanine aminotransferase; AAT 1; AAT1; Alanine aminotransferase 1; alanine aminotransferase; ALT 1; ALT1; Glutamic alanine transaminase 1; Glutamic pyruvate transaminase; Glutamic pyruvic transaminase 1; Glutamic-alanine transaminase; GPT 1; GPT; GPT1; SGPT; ALAT1 HUMAN.
Organism Species:	Rabbit
Clonality:	Polyclonal
React Species:	Human,Mouse,Rat,Pig,Cow,
Applications:	WB=1:500-2000ELISA=1:500-1000IHC-P=1:400-800IHC-F=1:400-800IF=1:100-500 (Paraffin sections need antigen repair) not yet tested in other applications. optimal dilutions/concentrations should be determined by the end user.
Molecular weight:	55kDa
Cellular localization:	cytoplasmic
Form:	Lyophilized or Liquid
Concentration:	1mg/ml
immunogen:	KLH conjugated synthetic peptide derived from human ALT1:301-400/496
Lsotype:	IgG
Purification:	affinity purified by Protein A
Storage Buffer:	0.01M TBS(pH7.4) with 1% BSA, 0.03% Proclin300 and 50% Glycerol.
Storage:	Store at -20 °C for one year. Avoid repeated freeze/thaw cycles. The lyophilized antibody is stable at room temperature for at least one month and for greater than a year when kept at -20°C. When reconstituted in sterile pH 7.4 0.01M PBS or diluent of antibody the antibody is stable for at least two weeks at 2-4 °C.
PubMed:	PubMed
Product Detail:	Alanine Transaminase [glutamic pyruvate transaminase - GPT] participates in cellular nitrogen metabolism and also in liver gluconeogenesis starting with precursors transported from skeletal muscles. Pyridoxal phosphate is a known cofactor. Expression is induced by glucocorticoids. This enzyme is present in a high concentration in liver

tissue and its release into the blood indicates liver disease or damage.

Function:

Catalyzes the reversible transamination between alanine and 2-oxoglutarate to form pyruvate and glutamate. Participates in cellular nitrogen metabolism and also in liver gluconeogenesis starting with precursors transported from skeletal muscles.

Subcellular Location:

Cytoplasm.

Tissue Specificity:

Liver, kidney, heart, and skeletal muscles. Expressed at moderate levels in the adipose tissue.

Similarity:

Belongs to the class-I pyridoxal-phosphate-dependent aminotransferase family. Alanine aminotransferase subfamily.

SWISS:

P24298

Gene ID:

2875

Database links:

[Entrez Gene: 539188](#)Cow

[Entrez Gene: 2875](#)Human

[Entrez Gene: 76282](#)Mouse

[Entrez Gene: 81670](#)Rat

[Omim: 138200](#)Human

[SwissProt: A4IFH5](#)Cow

[SwissProt: P24298](#)Human

[SwissProt: Q8QZR5](#)Mouse

[SwissProt: P25409](#)Rat

[Unigene: 103502](#)Human

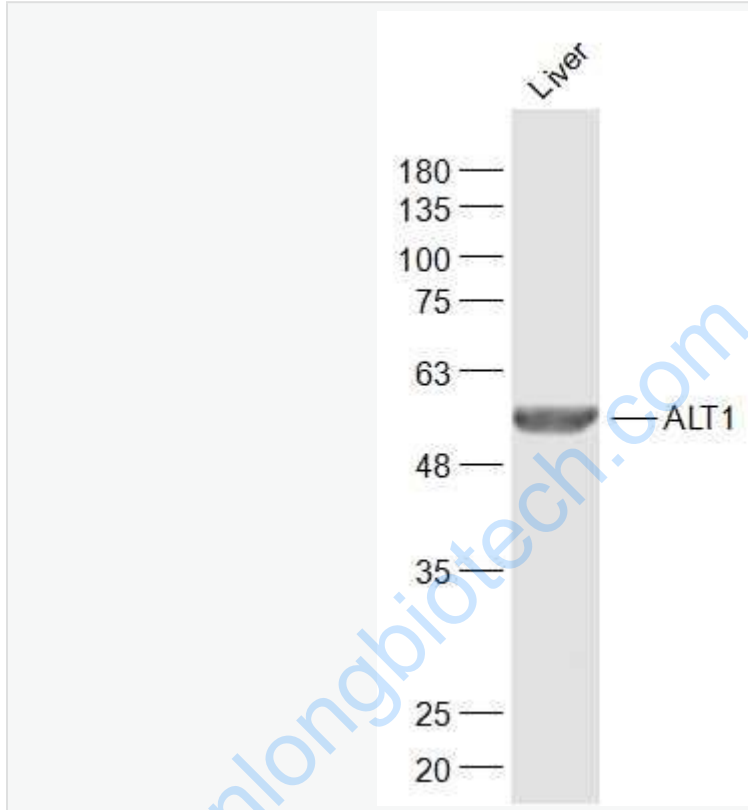
[Unigene: 30130](#)Mouse

[Unigene: 6318](#)Rat

Important Note:

This product as supplied is intended for research use only, not for use in human, therapeutic or diagnostic applications.

Picture:



Sample:

Liver (Mouse) Lysate at 40 ug

Primary: Anti-ALT1 (SL2532R) at 1/1000 dilution

Secondary: IRDye800CW Goat Anti-Rabbit IgG at 1/20000 dilution

Predicted band size: 55 kD

Observed band size: 55 kD