



Rabbit Anti-GLUT12 antibody

SL2540R

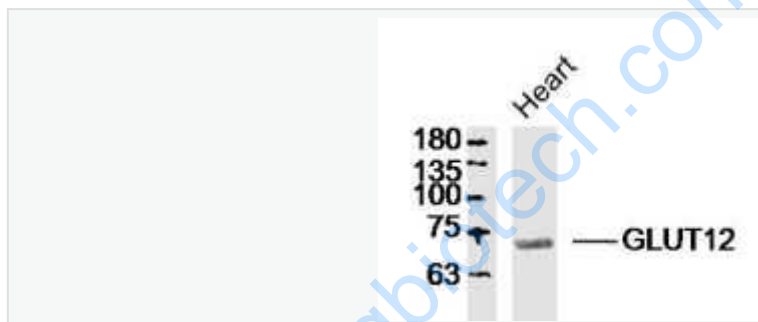
Product Name:	GLUT12
Chinese Name:	葡萄糖Transporter12抗体
Alias:	GLUT-12; GTR12_HUMAN; Glucose transporter type 12; Glucose transporter type 12; GLUT 12; GLUT8; SLC2A12; Solute carrier family 2 (facilitated glucose transporter) member 12; Solute carrier family 2 facilitated glucose transporter member 12; Solute carrier family 2 member 12.
文献引用 PubMed :	<p>Specific References(3) SL2540R has been referenced in 3 publications.</p> <p>[IF=4.17]Pujol-Gimenez, Jonai, et al. "Expression of the Glucose Transporter GLUT12 in Alzheimers Disease Patients." Journal of Alzheimers Disease (2014).WB;Human. PubMed:24820014</p> <p>[IF=2.64]Pujol-Gimenez, Jonai, et al. "Expression of the Glucose Transporter GLUT12 in Alzheimers Disease Patients." Journal of Alzheimers Disease (2014).IHC-P;Human. PubMed:25561978</p> <p>[IF=3.05]Murakami, Ryuta, et al. "Immunoreactivity of glucose transporter 8 is localized in the epithelial cells of the choroid plexus and in ependymal cells." Histochemistry and Cell Biology (2016):1-6IHC-F;Mouse. PubMed:27160096</p>
Organism Species:	Rabbit
Clonality:	Polyclonal
React Species:	Human,Mouse,Rat,Chicken,Dog,Pig,Cow,Horse,Rabbit,Guinea Pig,
Applications:	WB=1:500-2000ELISA=1:500-1000IHC-P=1:400-800IHC-F=1:400-800Flow-Cyt=2µg/TestIF=1:100-500 (Paraffin sections need antigen repair) not yet tested in other applications. optimal dilutions/concentrations should be determined by the end user.
Molecular weight:	68kDa

Cellular localization:	cytoplasmicThe cell membrane
Form:	Lyophilized or Liquid
Concentration:	1mg/ml
immunogen:	KLH conjugated synthetic peptide derived from human GLUT12:251-350/617<Extracellular>
Lsotype:	IgG
Purification:	affinity purified by Protein A
Storage Buffer:	0.01M TBS(pH7.4) with 1% BSA, 0.03% Proclin300 and 50% Glycerol.
Storage:	Store at -20 °C for one year. Avoid repeated freeze/thaw cycles. The lyophilized antibody is stable at room temperature for at least one month and for greater than a year when kept at -20°C. When reconstituted in sterile pH 7.4 0.01M PBS or diluent of antibody the antibody is stable for at least two weeks at 2-4 °C.
PubMed:	PubMed
Product Detail:	<p>GLUT12 belongs to a family of transporters that catalyze the uptake of sugars through facilitated diffusion. Thirteen different types of glucose/fructose transport carrier proteins designated as Glut 1-13 facilitate glucose/fructose transport across the cell membrane. Individual members of the Glut family have predicted secondary structure characteristic of 12 membrane spanning domains of other transport carriers.</p> <p>Function: Facilitative glucose transporter.</p> <p>Subcellular Location: Endomembrane system; Multi-pass membrane protein. Cytoplasm, perinuclear region. Note=Localizes primarily perinuclear region in the absence of insulin.</p> <p>Tissue Specificity: Predominantly expressed in skeletal muscle, heart and prostate, with lower levels in brain, placenta and kidney.</p> <p>Similarity: Belongs to the major facilitator superfamily. Sugar transporter (TC 2.A.1.1) family. Glucose transporter subfamily.</p> <p>SWISS: Q8TD20</p> <p>Gene ID: 154091</p> <p>Database links: Entrez Gene: 154091?/span>Human Entrez Gene: 353169?/span>Mouse Entrez Gene: 308028?/span>Rat</p>

[Omim: 610372](#)?/span>Human
[SwissProt: Q8TD20](#)?/span>Human
[SwissProt: Q8BFW9](#)?/span>Mouse
[Unigene: 486508](#)?/span>Human
[Unigene: 473705](#)?/span>Mouse

Important Note:

This product as supplied is intended for research use only, not for use in human, therapeutic or diagnostic applications.



Picture:

Sample:

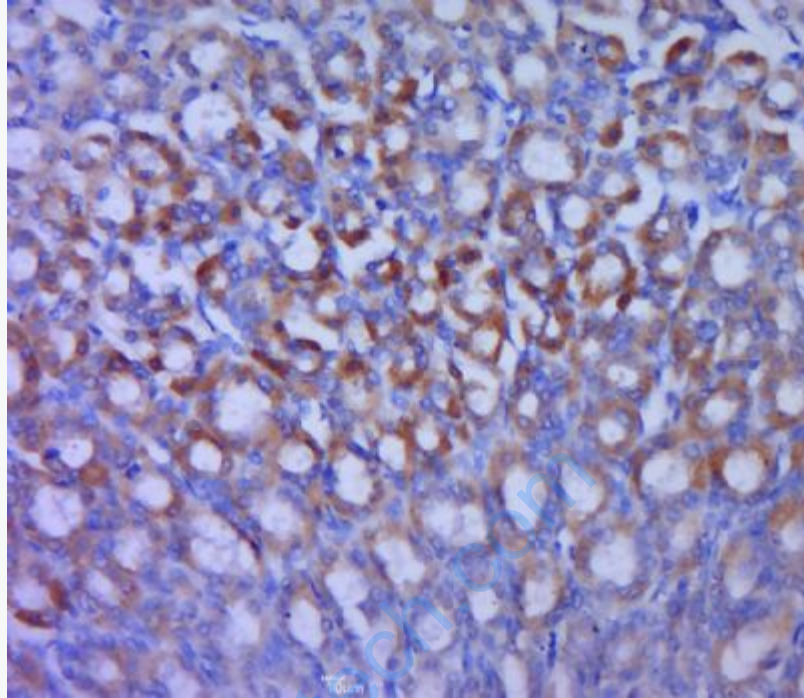
Heart (Rat) Lysate at 40 ug

Primary: Anti- GLUT12 (SL2540R)at 1/300 dilution

Secondary: IRDye800CW Goat Anti-Rabbit IgG at 1/20000 dilution

Predicted band size: 68kD

Observed band size: 68kD



Paraformaldehyde-fixed, paraffin embedded (rat stomach tissue); Antigen retrieval by boiling in sodium citrate buffer (pH6.0) for 15min; Block endogenous peroxidase by 3% hydrogen peroxide for 20 minutes; Blocking buffer (normal goat serum) at 37°C for 30min; Antibody incubation with (GLUT12) Polyclonal Antibody, Unconjugated (SL2540R) at 1:400 overnight at 4°C, followed by a conjugated secondary (sp-0023) for 20 minutes and DAB staining.