



## Rabbit Anti-CXCL13 antibody

SL2553R

<b>Product Name:</b>	CXCL13
<b>Chinese Name:</b>	B-lymphocyte Chemokine 抗体
<b>Alias:</b>	ANGIE; ANGIE2; B cell attracting chemokine 1; B cell-attracting chemokine 1; B lymphocyte chemoattractant; B-cell chemoattractant; B-cell-attracting chemokine 1; BCA-1; BLC; BLR1L; C-X-C motif chemokine 13; Chemokine (C-X-C motif) ligand 13; Chemokine (C-X-C motif) ligand 13 (B-cell chemoattractant); Chemokine, CXC motif, ligand 13; CXC chemokine BLC; CXCL13; CXL13_HUMAN; SCYB13; Small inducible cytokine B subfamily (Cys-X-Cys motif), member 13 (B-cell chemoattractant); Small inducible cytokine B13; Small inducible cytokine subfamily B, member 13; Small-inducible cytokine B13.
<b>文献引用</b> <b>PubMed</b> :	<p><b>Specific References(3)</b> SL2553R has been referenced in 3 publications.</p> <p><b>[IF=8.98]</b>Pei, Guangchang, et al. "Renal Interstitial Infiltration and Tertiary Lymphoid Organ Neogenesis in IgA Nephropathy." Clinical Journal of the American Society of Nephrology (2013): CJN-01150113.<b>IHC-P;Human.</b>  <a href="#">PubMed:24262509</a></p> <p><b>[IF=4.21]</b>Pimenta, Erica Maria, et al. "IRF5 is a novel regulator of CXCL13 expression in breast cancer that regulates CXCR5+ B-and T-cell trafficking to tumor-conditioned media." Immunology and Cell Biology (2014).<b>other;Human.</b>  <a href="#">PubMed:25533286</a></p> <p><b>[IF=2.07]</b>Lemma, Siria A., et al. "Similar chemokine receptor profiles in lymphomas with central nervous system involvement–possible biomarkers for patient selection for central nervous system prophylaxis, a retrospective study." European Journal of Haematology (2015).<b>IHC-P;Human.</b>  <a href="#">PubMed:26153511</a></p>

<b>Organism Species:</b>	Rabbit
<b>Clonality:</b>	Polyclonal
<b>React Species:</b>	Human,Dog,
<b>Applications:</b>	ELISA=1:500-1000IHC-P=1:400-800IHC-F=1:400-800IF=1:100-500 (Paraffin sections need antigen repair) not yet tested in other applications. optimal dilutions/concentrations should be determined by the end user.
<b>Molecular weight:</b>	10kDa
<b>Cellular localization:</b>	Secretory protein
<b>Form:</b>	Lyophilized or Liquid
<b>Concentration:</b>	1mg/ml
<b>immunogen:</b>	KLH conjugated synthetic peptide derived from human CXCL13:23-109/109
<b>Lsotype:</b>	IgG
<b>Purification:</b>	affinity purified by Protein A
<b>Storage Buffer:</b>	0.01M TBS(pH7.4) with 1% BSA, 0.03% Proclin300 and 50% Glycerol.
<b>Storage:</b>	Store at -20 °C for one year. Avoid repeated freeze/thaw cycles. The lyophilized antibody is stable at room temperature for at least one month and for greater than a year when kept at -20°C. When reconstituted in sterile pH 7.4 0.01M PBS or diluent of antibody the antibody is stable for at least two weeks at 2-4 °C.
<b>PubMed:</b>	<a href="#">PubMed</a>
<b>Product Detail:</b>	<p>B lymphocyte chemoattractant, independently cloned and named Angie, is a CXC chemokine strongly expressed in the follicles of the spleen, lymph nodes, and Peyer's patches. It preferentially promotes the migration of B lymphocytes (compared to T cells and macrophages), apparently by stimulating calcium influx into, and chemotaxis of, cells expressing Burkitt's lymphoma receptor 1 (BLR1). It may therefore function in the homing of B lymphocytes to follicles.</p> <p><b>Function:</b> Chemotactic for B-lymphocytes but not for T-lymphocytes, monocytes and neutrophils. Does not induce calcium release in B-lymphocytes. Binds to BLR1/CXCR5.</p> <p><b>Subcellular Location:</b> Secreted.</p> <p><b>Tissue Specificity:</b> Highest levels in liver, followed by spleen, lymph node, appendix and stomach. Low levels in salivary gland, mammary gland and fetal spleen.</p> <p><b>Similarity:</b> Belongs to the intercrine alpha (chemokine CxC) family.</p> <p><b>SWISS:</b> O43927</p> <p><b>Gene ID:</b></p>

10563

**Database links:**

[Entrez Gene: 10563](#)Human

[Entrez Gene: 55985](#)Mouse

[Entrez Gene: 498335](#)Rat

[Omim: 605149](#)Human

[SwissProt: O43927](#)Human

[SwissProt: O55038](#)Mouse

[Unigene: 100431](#)Human

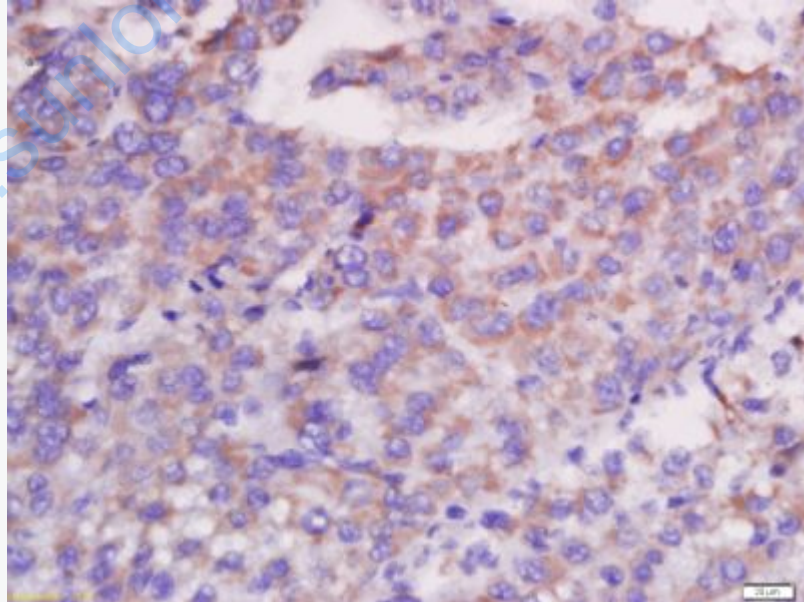
[Unigene: 10116](#)Mouse

[Unigene: 6917](#)Rat

**Important Note:**

This product as supplied is intended for research use only, not for use in human, therapeutic or diagnostic applications.

**Picture:**



Paraformaldehyde-fixed, paraffin embedded (human liver carcinoma); Antigen retrieval by boiling in sodium citrate buffer (pH6.0) for 15min; Block endogenous

peroxidase by 3% hydrogen peroxide for 20 minutes; Blocking buffer (normal goat serum) at 37°C for 30min; Antibody incubation with (CXCL13) Polyclonal Antibody, Unconjugated (SL2553R) at 1:400 overnight at 4°C, followed by a conjugated secondary (sp-0023) for 20 minutes and DAB staining.