



## Rabbit Anti-LAMP3 antibody

SL2556R

<b>Product Name:</b>	LAMP3
<b>Chinese Name:</b>	溶酶体相关膜蛋白3抗体
<b>Alias:</b>	DC-lysosome-associated membrane glycoprotein; CD208; CD208 antigen; DC LAMP; DCLAMP; DC-LAMP; LAMP; LAMP 3; LAMP-3; LAMP3; Lysosomal associated membrane protein 3; Protein TSC403; TSC403; DC lysosome associated membrane glycoprotein; LAMP3_HUMAN; Lysosomal-associated membrane protein 3; Lysosome-associated membrane glycoprotein 3.
<b>Organism Species:</b>	Rabbit
<b>Clonality:</b>	Polyclonal
<b>React Species:</b>	Human,Mouse,Rat,Cow,Horse,Rabbit,
<b>Applications:</b>	WB=1:500-2000ELISA=1:500-1000IHC-F=1:400-800IF=1:100-500 (Paraffin sections need antigen repair) not yet tested in other applications. optimal dilutions/concentrations should be determined by the end user.
<b>Molecular weight:</b>	44kDa
<b>Cellular localization:</b>	cytoplasmic
<b>Form:</b>	Lyophilized or Liquid
<b>Concentration:</b>	1mg/ml
<b>immunogen:</b>	KLH conjugated synthetic peptide derived from human LAMP-3:301-416/416
<b>Lsotype:</b>	IgG
<b>Purification:</b>	affinity purified by Protein A
<b>Storage Buffer:</b>	0.01M TBS(pH7.4) with 1% BSA, 0.03% Proclin300 and 50% Glycerol.
<b>Storage:</b>	Store at -20 °C for one year. Avoid repeated freeze/thaw cycles. The lyophilized antibody is stable at room temperature for at least one month and for greater than a year when kept at -20°C. When reconstituted in sterile pH 7.4 0.01M PBS or diluent of antibody the antibody is stable for at least two weeks at 2-4 °C.
<b>PubMed:</b>	<a href="#">PubMed</a>
<b>Product Detail:</b>	LAMP3 might change the lysosome function after the transfer of peptide MHC class II molecules to the surface of dendritic cells. It's over expression is associated with an enhanced metastatic potential and may be a prognostic factor for cervical cancer.

Expressed in lymphoid organs and dendritic cells and lung. Up regulated in carcinomas of the esophagus, colon, rectum, ureter, stomach, breast, fallopian tube, thyroid and parotid tissues.

**Function:**

Might change the lysosome function after the transfer of peptide-MHC class II molecules to the surface of dendritic cells.

**Subcellular Location:**

Lysosome membrane.

**Tissue Specificity:**

Expressed in lymphoid organs and dendritic cells. Expressed in lung. Up-regulated in carcinomas of the esophagus, colon, rectum, ureter, stomach, breast, fallopian tube, thyroid and parotid tissues.

**Similarity:**

Belongs to the LAMP family.

**SWISS:**

Q9UQV4

**Gene ID:**

27074

**Database links:**

[Entrez Gene: 27074](#) Human

[Omim: 605883](#) Human

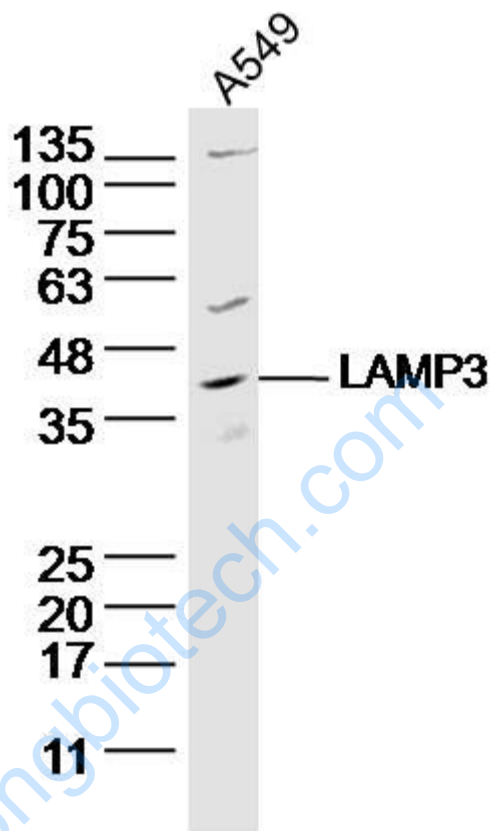
[SwissProt: Q9UQV4](#) Human

[Unigene: 518448](#) Human

**Important Note:**

This product as supplied is intended for research use only, not for use in human, therapeutic or diagnostic applications.

Picture:



Sample: A549 Cell (Human) Lysate at 40 ug

Primary: Anti- LAMP3 (SL2556R) at 1/300 dilution

Secondary: IRDye800CW Goat Anti-Rabbit IgG at 1/20000 dilution

Predicted band size: 44 kD

Observed band size: 44 kD