



Rabbit Anti-CD226 antibody

SL2569R

Product Name:	CD226
Chinese Name:	CD226抗体
Alias:	DNAX accessory molecule 1; adhesion glycoprotein; CD226 antigen; DNAM1; platelet and T cell activation antigen 1; PTA1; TLiSA1; CD226; CD226 molecule; CD226 HUMAN; DNAM 1; DNAM-1; T lineage specific activation antigen 1 antigen.
Organism Species:	Rabbit
Clonality:	Polyclonal
React Species:	Human,Mouse,Rat,Pig,Cow,Horse,Rabbit,
Applications:	WB=1:500-2000ELISA=1:500-1000IHC-P=1:400-800IHC-F=1:400-800Flow-Cyt=1µg/TestICC=1:100-500IF=1:100-500 (Paraffin sections need antigen repair) not yet tested in other applications. optimal dilutions/concentrations should be determined by the end user.
Molecular weight:	35kDa
Cellular localization:	The cell membrane
Form:	Lyophilized or Liquid
Concentration:	1mg/ml
immunogen:	KLH conjugated synthetic peptide derived from human CD226:201-300/336<Extracellular>
Lsotype:	IgG
Purification:	affinity purified by Protein A
Storage Buffer:	0.01M TBS(pH7.4) with 1% BSA, 0.03% Proclin300 and 50% Glycerol.
Storage:	Store at -20 °C for one year. Avoid repeated freeze/thaw cycles. The lyophilized antibody is stable at room temperature for at least one month and for greater than a year when kept at -20°C. When reconstituted in sterile pH 7.4 0.01M PBS or diluent of antibody the antibody is stable for at least two weeks at 2-4 °C.
PubMed:	PubMed
Product Detail:	This gene encodes a glycoprotein expressed on the surface of NK cells, platelets, monocytes and a subset of T cells. It is a member of the Ig-superfamily containing 2 Ig-like domains of the V-set. The protein mediates cellular adhesion of platelets and megakaryocytic cells to vascular endothelial cells. The protein also plays a role in

megakaryocytic cell maturation. [provided by RefSeq, Jul 2008]

Subunit:

Interacts with PVR and PVRL2.

Subcellular Location:

Membrane; Single-pass type I membrane protein.

Tissue Specificity:

Expressed by peripheral blood T-lymphocytes.

Similarity:

Contains 2 Ig-like C2-type (immunoglobulin-like) domains.

SWISS:

Q15762

Gene ID:

10666

Database links:

[Entrez Gene: 10666](#)Human

[Omim: 605397](#)Human

[SwissProt: Q15762](#)Human

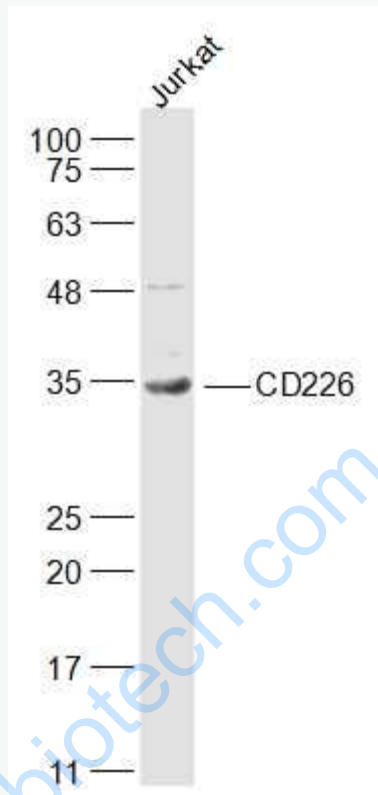
[Unigene: 660130](#)Human

Important Note:

This product as supplied is intended for research use only, not for use in human, therapeutic or diagnostic applications.

CD226分子是一种广泛表达于多种免疫The cell membrane表面的 I 型跨膜glycoprotein, CD226广泛表达于T细胞、NK细胞、NK T细胞、活化的vascular endothelial cell、巨核/血小板谱系、单核细胞、胸腺细胞、某些B细胞亚群、部分造血Stem cells和肥大细胞等免疫细胞表面, 在免疫系统以外则分布于海马和小脑皮质的神经突触部位。CD226与其配体的相互作用参与CTL和NK细胞的活化、分化和细胞毒作用,调节CD4+ T细胞的增殖和分化, 介导endothelial cells与其他细胞的黏附,促进血小板的活化与聚集, 参与造血调控, 介导肥大细胞的脱颗粒作用, 参与NK T细胞和胸腺细胞的抗凋亡作用、树突状细胞的成熟、免疫突触和神经突触的形成, 并与Tumour、自身免疫性疾病、移植排斥及病毒感染等疾病密切相关。

Picture:



Sample:

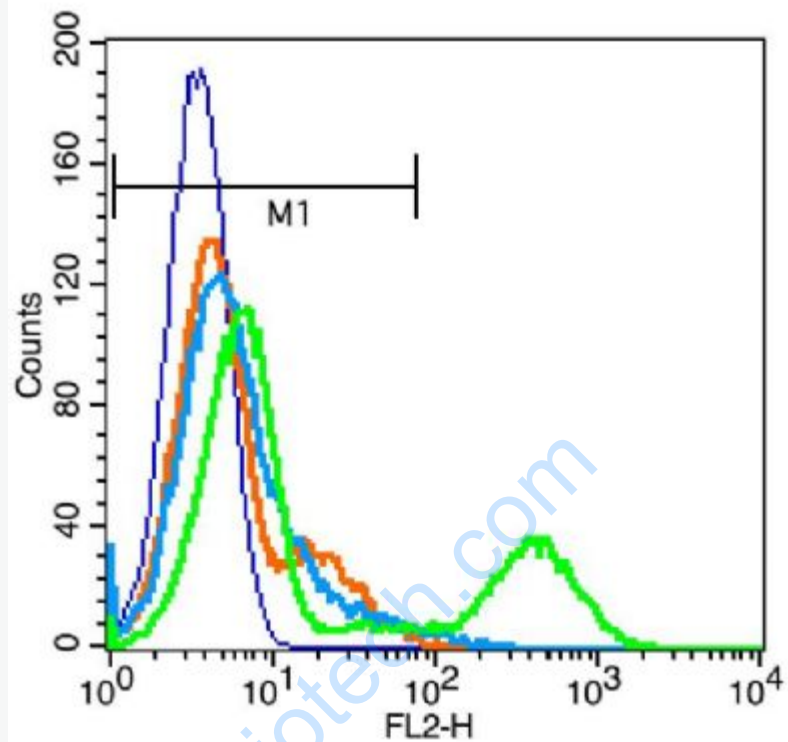
Jurkat(Human) Cell Lysate at 30 ug

Primary: Anti-CD226 (SL2569R) at 1/1000 dilution

Secondary: IRDye800CW Goat Anti-Rabbit IgG at 1/20000 dilution

Predicted band size: 35 kD

Observed band size: 35 kD



Blank control(blue): Jurkat cells(fixed with 2% paraformaldehyde (10 min)).

Primary Antibody:Rabbit Anti-CD226 antibody(SL2569R), Dilution: 1 μ g in 100 μ L
1X PBS containing 0.5% BSA;

Isotype Control Antibody: Rabbit IgG(orange) ,used under the same conditions);

Secondary Antibody: Goat anti-rabbit IgG-PE(white blue), Dilution: 1:200 in 1 X
PBS containing 0.5% BSA.