



Rabbit Anti-CD32 antibody

SL2573R

Product Name:	CD32
Chinese Name:	免疫球蛋白G Fc段受体 II /Fc γ RII a抗体
Alias:	CD 32; CD32 antigen; CD32A; CD32B; CD32C; CDw32; Fc gamma RII a; Fc fragment of IgG low affinity II receptor for (CD32); Fc fragment of IgG low affinity IIa receptor; Fc fragment of IgG low affinity IIa receptor for (CD32); Fc fragment of IgG low affinity IIb receptor; Fc fragment of IgG low affinity IIb receptor for (CD32) ; Fc fragment of IgG low affinity IIc receptor; Fc fragment of IgG low affinity IIc receptor for (CD32); Fc gamma receptor IIB; Fc gamma RII a; Fc gamma RII b; Fc gamma RII c; Fc gamma RIIa; Fc gamma RIIb; Fc gamma RIIc; Fc receptor, IgG, low affinity IIb; Fc-gamma RII-a; Fc-gamma RII-b; Fc-gamma RII-c; FC-gamma-RIIB; Fc-GAMMA-RIIC; Fc[g]RII; FCG 2; FCG2; FcgammaRIIC; FCGR 2; FcGR; FCGR2; FCGR2A; FCGR2A1; FCGR2B; FCGR2C; Fcgr3; Fcgr3a; FcgrRII; Fcr-2; Fcr-3; FcRII a; FCRII; FcRII b; FcRII c; FcRIIC; IGFR 2; IGFR2; IgG Fc receptor II a; IgG Fc receptor II b; IgG Fc receptor II beta; IgG Fc receptor II c; IgG Fc receptor II-a; IgG Fc receptor II-b; IgG Fc receptor II-c; Immunoglobulin G Fc receptor II; Low affinity immunoglobulin gamma Fc region receptor II a; Low affinity immunoglobulin gamma Fc region receptor II b; Low affinity immunoglobulin gamma Fc region receptor II c; Low affinity immunoglobulin gamma Fc region receptor II-a; Low affinity immunoglobulin gamma Fc region receptor II-b; Low affinity immunoglobulin gamma Fc region receptor II-c; Ly-17; Ly-m20; LyM-1; Lymphocyte antigen 17; MGC23887; MGC30032.
Organism Species:	Rabbit
Clonality:	Polyclonal
React Species:	Human,
Applications:	WB=1:500-2000ELISA=1:500-1000Flow-Cyt=0.2 μ g/Test not yet tested in other applications. optimal dilutions/concentrations should be determined by the end user.
Molecular weight:	31kDa
Cellular localization:	The cell membrane
Form:	Lyophilized or Liquid

Concentration:	1mg/ml
immunogen:	KLH conjugated synthetic peptide derived from human Fc gamma RII a:201-300/317
Lsotype:	IgG
Purification:	affinity purified by Protein A
Storage Buffer:	0.01M TBS(pH7.4) with 1% BSA, 0.03% Proclin300 and 50% Glycerol.
Storage:	Store at -20 °C for one year. Avoid repeated freeze/thaw cycles. The lyophilized antibody is stable at room temperature for at least one month and for greater than a year when kept at -20°C. When reconstituted in sterile pH 7.4 0.01M PBS or diluent of antibody the antibody is stable for at least two weeks at 2-4 °C.
PubMed:	PubMed
Product Detail:	<p>This gene encodes one member of a family of immunoglobulin Fc receptor genes found on the surface of many immune response cells. The protein encoded by this gene is a cell surface receptor found on phagocytic cells such as macrophages and neutrophils, and is involved in the process of phagocytosis and clearing of immune complexes. Alternative splicing results in multiple transcript variants. [provided by RefSeq].</p> <p>Function: Binds to the Fc region of immunoglobulins gamma. Low affinity receptor. By binding to IgG it initiates cellular responses against pathogens and soluble antigens. Promotes phagocytosis of opsonized antigens.</p> <p>Subunit: Isoform IIB1 interacts with measles virus N protein. N protein is released in the blood following lysis of measles infected cells. This interaction presumably block inflammatory immune response. Interacts with INPP5D/SHIP1. Interacts with FGR. Interacts with LYN.</p> <p>Subcellular Location: Cell membrane; Single-pass type I membrane protein.</p> <p>Tissue Specificity: Is the most broadly distributed Fc-gamma-receptor. Expressed in monocyte, neutrophils, macrophages, basophils, eosinophils, Langerhans cells, B-cells, platelets cells and placenta (endothelial cells). Not detected in natural killer cells.</p> <p>Post-translational modifications: Phosphorylated by SRC-type Tyr-kinases such as LYN, BLK, FYN, HCK and SYK.</p> <p>Similarity: Contains 2 Ig-like C2-type (immunoglobulin-like) domains.</p> <p>SWISS: P12318</p> <p>Gene ID: 2212</p>

Database links:

[Entrez Gene: 2212](#)Human

[Entrez Gene: 2213](#)Human

[Entrez Gene: 9103](#)Human

[Entrez Gene: 116591](#)Rat

[Entrez Gene: 289211](#)Rat

[Oimim: 146790](#)Human

[Oimim: 604590](#)Human

[Oimim: 612169](#)Human

[SwissProt: P12318](#)Human

[SwissProt: P31994](#)Human

[SwissProt: P31995](#)Human

[SwissProt: Q63203](#)Rat

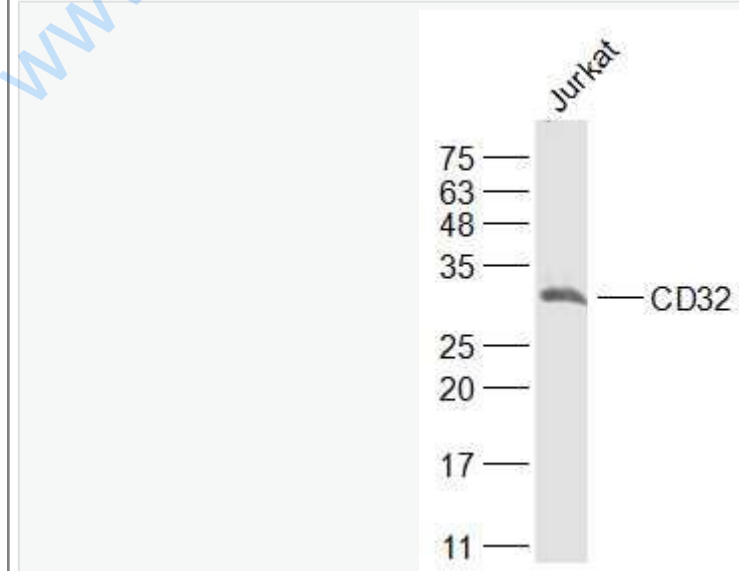
[Unigene: 352642](#)Human

[Unigene: 154415](#)Rat

Important Note:

This product as supplied is intended for research use only, not for use in human, therapeutic or diagnostic applications.

Picture:



Sample:

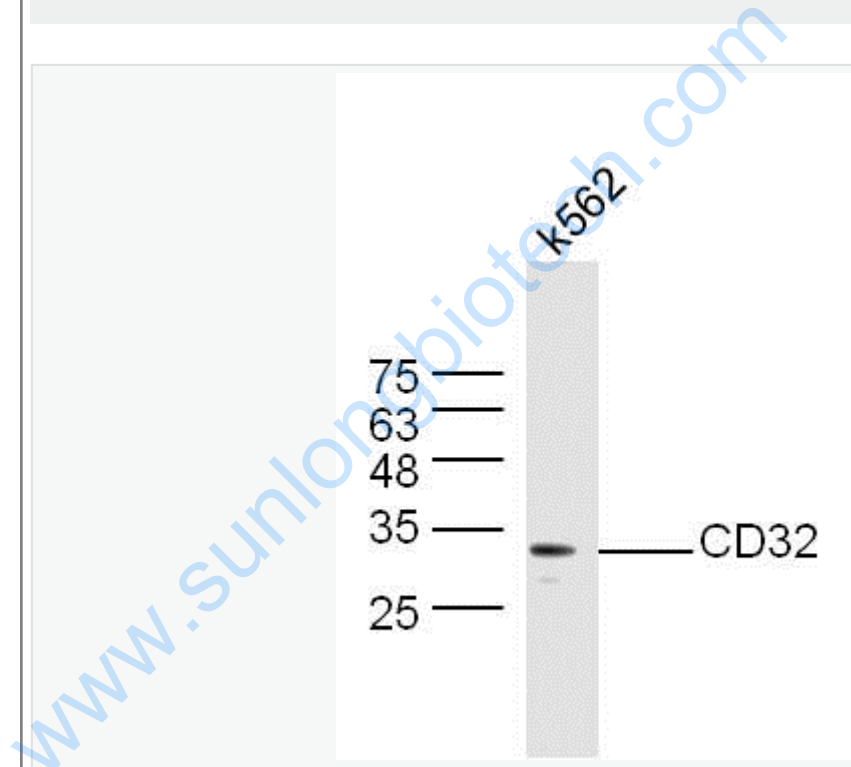
Jurkat(Human) Cell Lysate at 30 ug

Primary: Anti-CD32? (SL2573R) at 1/1000 dilution

Secondary: IRDye800CW Goat Anti-Rabbit IgG at 1/20000 dilution

Predicted band size: 31 kD

Observed band size: 31 kD



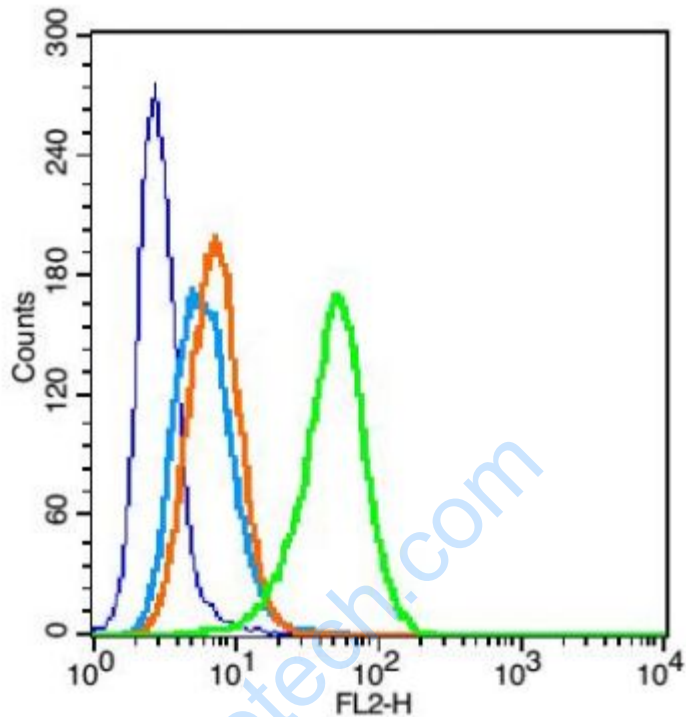
Sample: K562 Cell Lysate at 30 ug

Primary: Anti- CD32 (SL2573R) at 1/300 dilution

Secondary: IRDye800CW Goat Anti-Rabbit IgG at 1/20000 dilution

Predicted band size: 31 kD

Observed band size: 33 kD



Blank control: U937 (blue).

Primary Antibody: Rabbit Anti-CD32 antibody (SL2573R), Dilution: 0.2 μ g in 100 μ L
1X PBS containing 0.5% BSA;

Isotype Control Antibody: Rabbit IgG (orange), used under the same conditions);

Secondary Antibody: Goat anti-rabbit IgG-PE (white blue), Dilution: 1:200 in 1 X
PBS containing 0.5% BSA.

Protocol

The cells were fixed with 2% paraformaldehyde (10 min). Primary antibody (SL2573R) were incubated for 30 min on the ice, followed by 1 X PBS containing 0.5% BSA + 1 0% goat serum (15 min) to block non-specific protein-protein interactions. Then the Goat Anti-rabbit IgG/PE antibody was added into the blocking buffer mentioned above to react with the primary antibody at 1/200 dilution for 30

	min on ice. Acquisition of 20,000 events was performed.
--	---

www.sunlongbiotech.com