



Rabbit Anti-Granzyme A antibody

SL2578R

Product Name:	Granzyme A
Chinese Name:	颗粒酶A抗体
Alias:	CTL tryptase; CTLA3; Cytolytic t cell and natural killer cell specific trypsin like serine protease; Cytotoxic T lymphocyte associated serine esterase 3; Cytotoxic T lymphocyte proteinase 1; Cytotoxic T-lymphocyte proteinase 1; Fragmentin 1; Fragmentin-1; GRAA_HUMAN; Granzyme 1 cytotoxic T lymphocyte associated serine esterase 3; Granzyme A (Cytotoxic T lymphocyte associated serine esterase 3; Hanukah factor serine protease); Granzyme A (granzyme 1, cytotoxic T lymphocyte associated serine esterase 3); Granzyme A; Granzyme A precursor; Granzyme-1; GZMA; H factor; Hanukah factor serine protease; Hanukkah factor; HF; HFSP; TSP1.
Organism Species:	Rabbit
Clonality:	Polyclonal
React Species:	Human,Mouse,Rat,Dog,Pig,Cow,Horse,
Applications:	WB=1:500-2000ELISA=1:500-1000IHC-P=1:400-800IHC-F=1:400-800IF=1:100-500 (Paraffin sections need antigen repair) not yet tested in other applications. optimal dilutions/concentrations should be determined by the end user.
Molecular weight:	26kDa
Cellular localization:	cytoplasmicSecretory protein
Form:	Lyophilized or Liquid
Concentration:	1mg/ml
immunogen:	KLH conjugated synthetic peptide derived from human GZMA:101-200/262
Lsotype:	IgG
Purification:	affinity purified by Protein A
Storage Buffer:	0.01M TBS(pH7.4) with 1% BSA, 0.03% Proclin300 and 50% Glycerol.
Storage:	Store at -20 °C for one year. Avoid repeated freeze/thaw cycles. The lyophilized antibody is stable at room temperature for at least one month and for greater than a year when kept at -20°C. When reconstituted in sterile pH 7.4 0.01M PBS or diluent of antibody the antibody is stable for at least two weeks at 2-4 °C.
PubMed:	PubMed

Cytolytic T lymphocytes (CTL) and natural killer (NK) cells share the remarkable ability to recognize, bind, and lyse specific target cells. They are thought to protect their host by lysing cells bearing on their surface 'nonself' antigens, usually peptides or proteins resulting from infection by intracellular pathogens. The protein described here is a T cell- and natural killer cell-specific serine protease that may function as a common component necessary for lysis of target cells by cytotoxic T lymphocytes and natural killer cells. [provided by RefSeq, Jul 2008]

Function:

This enzyme is necessary for target cell lysis in cell-mediated immune responses. It cleaves after Lys or Arg. Cleaves APEX1 after 'Lys-31' and destroys its oxidative repair activity. Involved in apoptosis.

Subunit:

Homodimer; disulfide-linked. Interacts with APEX1.

Subcellular Location:

Isoform alpha: Secreted. Cytoplasmic granule.

Similarity:

Belongs to the peptidase S1 family. Granzyme subfamily. Contains 1 peptidase S1 domain.

SWISS:

P12544

Gene ID:

3001

Database links:

[Entrez Gene: 3001](#)Human

[Omim: 140050](#)Human

[SwissProt: P12544](#)Human

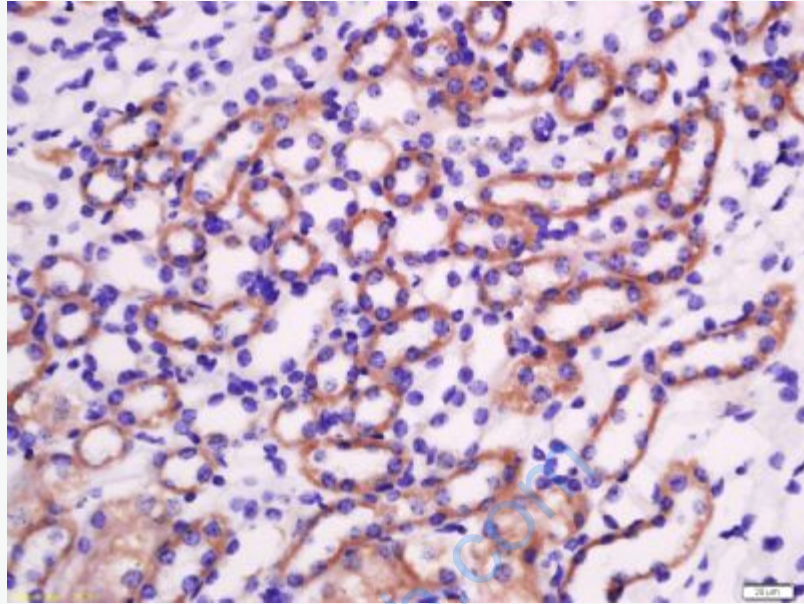
[Unigene: 90708](#)Human

Important Note:

This product as supplied is intended for research use only, not for use in human, therapeutic or diagnostic applications.

GzmA是存在于细胞毒性Tlymphocyte(CTL)和Natural killer cells(NK细胞)的细胞毒颗粒中含量最多的一种丝氨酸蛋白酶。

Product Detail:



Picture:

Tissue/cell: mouse kidney tissue; 4% Paraformaldehyde-fixed and paraffin-embedded;

Antigen retrieval: citrate buffer (0.01M, pH 6.0), Boiling bathing for 15min; Block endogenous peroxidase by 3% Hydrogen peroxide for 30min; Blocking buffer (normal goat serum,C-0005) at 37°C for 20 min;

Incubation: Anti- Granzyme A Polyclonal Antibody, Unconjugated(SL2578R) 1:200, overnight at 4°C, followed by conjugation to the secondary antibody(SP-0023) and DAB(C-0010) staining