



Rabbit Anti-CD35 antibody

SL2596R

Product Name:	CD35
Chinese Name:	I 型补体受体抗体(C3b/C4b受体抗体)
Alias:	C3 binding protein; C3b/C4b receptor; C3BR; C4BR; CD 35; CD35; CD35 antigen; complement component (3b/4b) receptor 1 (Knops blood group); complement component (3b/4b) receptor 1 including Knops blood group system; Complement component receptor 1; Complement receptor 1; Complement receptor type 1; CR 1; CR1; CR1_HUMAN; KN; Knops blood group antigen.
Organism Species:	Rabbit
Clonality:	Polyclonal
React Species:	Human,
Applications:	ELISA=1:500-1000IHC-P=1:400-800IHC-F=1:400-800Flow-Cyt=1 μ g /testICC=1:100-500IF=1:100-500 (Paraffin sections need antigen repair) not yet tested in other applications. optimal dilutions/concentrations should be determined by the end user.
Molecular weight:	274kDa
Cellular localization:	The cell membrane
Form:	Lyophilized or Liquid
Concentration:	1mg/ml
immunogen:	KLH conjugated synthetic peptide derived from human CR1:251-350/2039<Extracellular>
Lsotype:	IgG
Purification:	affinity purified by Protein A
Storage Buffer:	0.01M TBS(pH7.4) with 1% BSA, 0.03% Proclin300 and 50% Glycerol.
Storage:	Store at -20 °C for one year. Avoid repeated freeze/thaw cycles. The lyophilized antibody is stable at room temperature for at least one month and for greater than a year when kept at -20°C. When reconstituted in sterile pH 7.4 0.01M PBS or diluent of antibody the antibody is stable for at least two weeks at 2-4 °C.
PubMed:	PubMed
Product Detail:	This gene is a member of the receptors of complement activation (RCA) family and is located in the 'cluster RCA' region of chromosome 1. The gene encodes a monomeric

single-pass type I membrane glycoprotein found on erythrocytes, leukocytes, glomerular podocytes, and splenic follicular dendritic cells. The Knops blood group system is a system of antigens located on this protein. The protein mediates cellular binding to particles and immune complexes that have activated complement. Decreases in expression of this protein and/or mutations in its gene have been associated with gallbladder carcinomas, mesangiocapillary glomerulonephritis, systemic lupus erythematosus and sarcoidosis. Mutations in this gene have also been associated with a reduction in Plasmodium falciparum rosetting, conferring protection against severe malaria. Alternate allele-specific splice variants, encoding different isoforms, have been characterized. Additional allele specific isoforms, including a secreted form, have been described but have not been fully characterized.

Function:

Mediates cellular binding of particles and immune complexes that have activated complement.

Subunit:

Monomer.

Subcellular Location:

Membrane; Single-pass type I membrane protein.

Tissue Specificity:

Present on erythrocytes, leukocytes, glomerular podocytes, and splenic follicular dendritic cells.

Similarity:

Belongs to the receptors of complement activation (RCA) family.
Contains 30 Sushi (CCP/SCR) domains.

SWISS:

P17927

Gene ID:

1378

Database links:

[Entrez Gene: 1378](#) Human

[Omim: 120620](#) Human

[SwissProt: P17927](#) Human

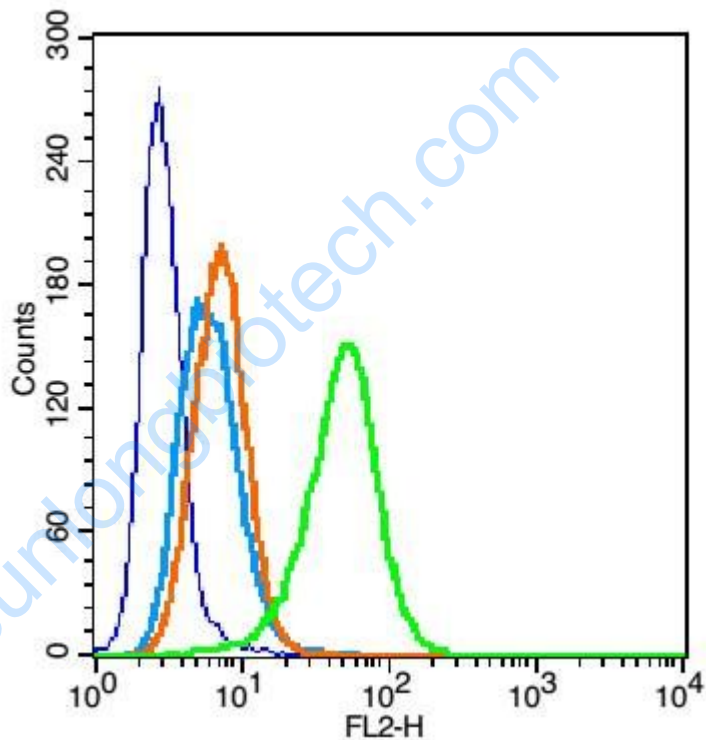
[Unigene: 334019](#) Human

Important Note:

This product as supplied is intended for research use only, not for use in human, therapeutic or diagnostic applications.

CD35广泛分布于红细胞、粒细胞、单核细胞、肥大细胞、滤泡树突状细胞、肾小球足突细胞、B细胞及部分CD4+T细胞表面。CD35抗原又称为CR1或者C3b/C4b R, 是一种分子量160-250kDa的C3b/C4b补体结合Transmembrane protein, 主要用于滤泡树突状细胞标记和滤泡树突状细胞瘤的诊断。

Picture:



Blank control(blue): U937 (fixed with 2% paraformaldehyde (10 min)).

Primary Antibody:Rabbit Anti-Dopamine Transporter antibody(SL2596R), Dilution:
0.2 μ g in 100 μ L 1X PBS containing 0.5% BSA;

Isotype Control Antibody: Rabbit IgG(orange) ,used under the same conditions);

Secondary Antibody: Goat anti-rabbit IgG-PE(white blue), Dilution: 1:200 in 1 X
PBS containing 0.5% BSA.

