



## Rabbit Anti-IL3R alpha antibody

SL2600R

<b>Product Name:</b>	IL3R alpha
<b>Chinese Name:</b>	白介素3受体α链抗体
<b>Alias:</b>	IL-3R alpha; IL3R alpha; Interleukin-3 receptor subunit alpha precursor; CD 123; CD123; CD123 antigen; hIL3Ra; IL 3 receptor subunit alpha; IL 3R alpha; IL 3R; IL 3R subunit alpha; IL3 receptor subunit alpha; IL3R alpha; IL3R; IL3RAY; IL3RX; IL3RY; Interleukin 3 receptor alpha; Interleukin 3 receptor, alpha (low affinity); Interleukin-3 receptor; MGC34174; IL3RA HUMAN.
<b>Organism Species:</b>	Rabbit
<b>Clonality:</b>	Polyclonal
<b>React Species:</b>	Human,Mouse,
<b>Applications:</b>	ELISA=1:500-1000IHC-P=1:400-800IHC-F=1:400-800Flow-Cyt=1μg /testIF=1:100-500 (Paraffin sections need antigen repair) not yet tested in other applications. optimal dilutions/concentrations should be determined by the end user.
<b>Molecular weight:</b>	40kDa
<b>Cellular localization:</b>	The cell membrane
<b>Form:</b>	Lyophilized or Liquid
<b>Concentration:</b>	1mg/ml
<b>immunogen:</b>	KLH conjugated synthetic peptide derived from human IL-3R alpha:201-300/378<Extracellular>
<b>Lsotype:</b>	IgG
<b>Purification:</b>	affinity purified by Protein A
<b>Storage Buffer:</b>	0.01M TBS(pH7.4) with 1% BSA, 0.03% Proclin300 and 50% Glycerol.
<b>Storage:</b>	Store at -20 °C for one year. Avoid repeated freeze/thaw cycles. The lyophilized antibody is stable at room temperature for at least one month and for greater than a year when kept at -20°C. When reconstituted in sterile pH 7.4 0.01M PBS or diluent of antibody the antibody is stable for at least two weeks at 2-4 °C.
<b>PubMed:</b>	<a href="#">PubMed</a>
<b>Product Detail:</b>	The protein encoded by this gene is an interleukin 3 specific subunit of a heterodimeric cytokine receptor. The receptor is comprised of a ligand specific alpha subunit and a

signal transducing beta subunit shared by the receptors for interleukin 3 (IL3), colony stimulating factor 2 (CSF2/GM-CSF), and interleukin 5 (IL5). The binding of this protein to IL3 depends on the beta subunit. The beta subunit is activated by the ligand binding, and is required for the biological activities of IL3. This gene and the gene encoding the colony stimulating factor 2 receptor alpha chain (CSF2RA) form a cytokine receptor gene cluster in a X-Y pseudoautosomal region on chromosomes X or Y. Alternatively spliced transcript variants encoding distinct isoforms have been found. [provided by RefSeq, Jun 2012]

**Function:**

This is a receptor for interleukin-3.

**Subunit:**

Heterodimer of an alpha and a beta subunit. The beta subunit is common to the IL3, IL5 and GM-CSF receptors.

**Subcellular Location:**

Membrane; Single-pass type I membrane protein.

**Similarity:**

Belongs to the type I cytokine receptor family. Type 5 subfamily.

**SWISS:**

P26951

**Gene ID:**

3563

**Database links:**

[Entrez Gene: 3563](#)Human

[Oimim: 308385](#)Human

[Oimim: 430000](#)Human

[SwissProt: P26951](#)Human

[Unigene: 632790](#)Human

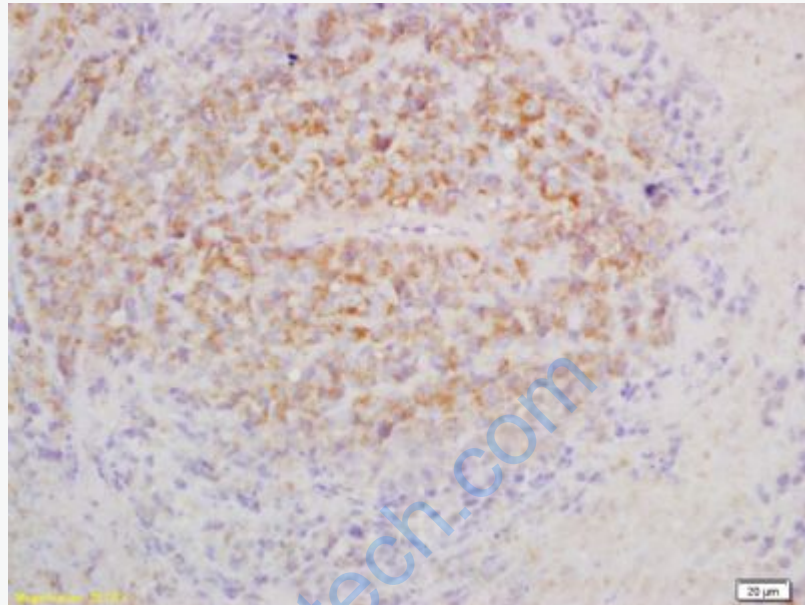
**Important Note:**

This product as supplied is intended for research use only, not for use in human, therapeutic or diagnostic applications.

白细胞介素3受体 $\alpha$ (IL-

3R $\alpha$ )又称CD123, 是造血生长因子受体家族成员,CD123是未分化白血病Stem

cells的特异标志.在细胞Signal transduction、Apoptosis及血液Tumour发生中起重要作用.

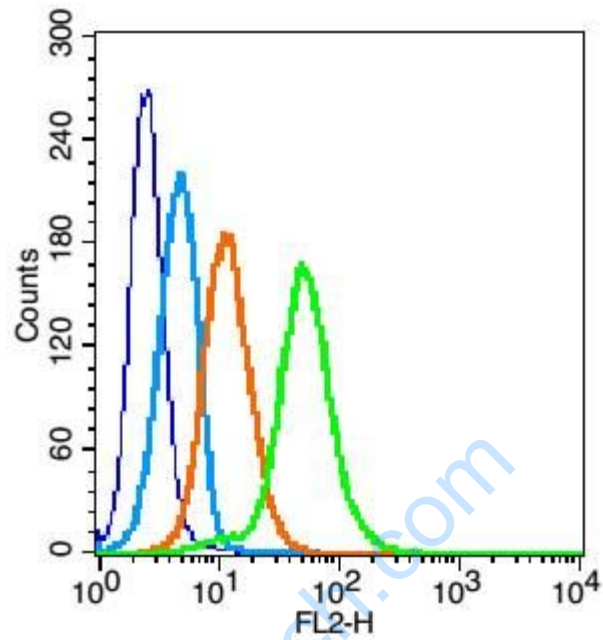


**Picture:**

Tissue/cell: mouse lymphoma tissue; 4% Paraformaldehyde-fixed and paraffin-embedded;

Antigen retrieval: citrate buffer ( 0.01M, pH 6.0 ), Boiling bathing for 15min; Block endogenous peroxidase by 3% Hydrogen peroxide for 30min; Blocking buffer (normal goat serum,C-0005) at 37°C for 20 min;

Incubation: Anti-IL3R alpha Polyclonal Antibody, Unconjugated(SL2600R) 1:200, overnight at 4°C, followed by conjugation to the secondary antibody(SP-0023) and DAB(C-0010) staining



Blank control(blue): U937(fixed with 2% paraformaldehyde (10 min)).

Primary Antibody: Rabbit Anti-IL3R antibody(SL2600R), Dilution: 1 $\mu$ g in 100  $\mu$ L  
1X PBS containing 0.5% BSA;

Isotype Control Antibody: Rabbit IgG (orange) ,used under the same conditions.

Secondary Antibody: Goat anti-rabbit IgG-PE(white blue), Dilution: 1:200 in 1 X  
PBS containing 0.5% BSA.