



Rabbit Anti-IL5RA antibody

SL2601R

Product Name:	IL5RA
Chinese Name:	白介素-5受体 α 链抗体IL-5R α
Alias:	Interleukin-5 receptor alpha; CD125 antigen; CDw125; HSIL5R3; IL5R; IL-5R; Interleukin 5 Receptor alpha; Interleukin 5 receptor subunit alpha; interleukin 5 receptor type 3; MGC26560; IL5RA; IL-5R alpha; IL5RA HUMAN.
Organism Species:	Rabbit
Clonality:	Polyclonal
React Species:	Human,Mouse,Rat,Cow,Rabbit,
Applications:	WB=1:500-2000ELISA=1:500-1000 not yet tested in other applications. optimal dilutions/concentrations should be determined by the end user.
Molecular weight:	46kDa
Cellular localization:	The cell membrane
Form:	Lyophilized or Liquid
Concentration:	1mg/ml
immunogen:	KLH conjugated synthetic peptide derived from human IL-5R alpha:11-110/420<Extracellular>
Lsotype:	IgG
Purification:	affinity purified by Protein A
Storage Buffer:	0.01M TBS(pH7.4) with 1% BSA, 0.03% Proclin300 and 50% Glycerol.
Storage:	Store at -20 °C for one year. Avoid repeated freeze/thaw cycles. The lyophilized antibody is stable at room temperature for at least one month and for greater than a year when kept at -20°C. When reconstituted in sterile pH 7.4 0.01M PBS or diluent of antibody the antibody is stable for at least two weeks at 2-4 °C.
PubMed:	PubMed
Product Detail:	The protein encoded by this gene is an interleukin 5 specific subunit of a heterodimeric cytokine receptor. The receptor is comprised of a ligand specific alpha subunit and a signal transducing beta subunit shared by the receptors for interleukin 3(IL3), colony stimulating factor 2 (CSF2/GM-CSF), and interleukin 5(IL5). The binding of this protein to IL5 depends on the beta subunit. The beta subunit is activated by the ligand

binding, and is required for the biological activities of IL5. This protein has been found to interact with syndecan binding protein (syntenin), which is required for IL5 mediated activation of the transcription factor SOX4. Six alternatively spliced transcript variants encoding three distinct isoforms have been reported.

Function:

This is the receptor for interleukin-5. The alpha chain binds to IL5.

Subunit:

Heterodimer of an alpha and a beta subunit. The beta subunit is common to the IL3, IL5 and GM-CSF receptors. Interacts with SDCBP.

Subcellular Location:

Membrane; Single-pass type I membrane protein.

Tissue Specificity:

Expressed on eosinophils and basophils.

Similarity:

Belongs to the type I cytokine receptor family. Type 5 subfamily.

SWISS:

Q01344

Gene ID:

3568

Database links:

[Entrez Gene: 3568](#)Human

[Entrez Gene: 16192](#)Mouse

[Oimim: 147851](#)Human

[SwissProt: Q01344](#)Human

[SwissProt: P21183](#)Mouse

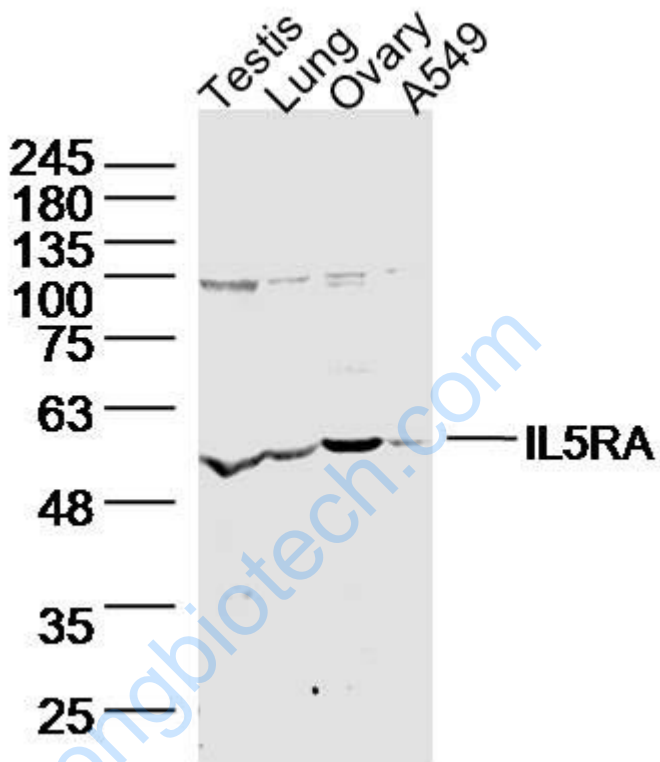
[Unigene: 207105](#)Human

[Unigene: 68876](#)Human

[Unigene: 3448](#)Mouse

Important Note:

This product as supplied is intended for research use only, not for use in human, therapeutic or diagnostic applications.



Picture:

Sample:

testis (mouse) Lysate at 40 ug

lung (mouse) Lysate at 40 ug

ovary (mouse) Lysate at 40 ug

A549 (human)cell Lysate at 40 ug

Primary: Anti- IL5RA(SL2601R)at 1/300 dilution

Secondary: IRDye800CW Goat Anti-Rabbit IgG at 1/20000 dilution

Predicted band size: 46kD

Observed band size: 56 kD