



Rabbit Anti-IL10RB antibody

SL2602R

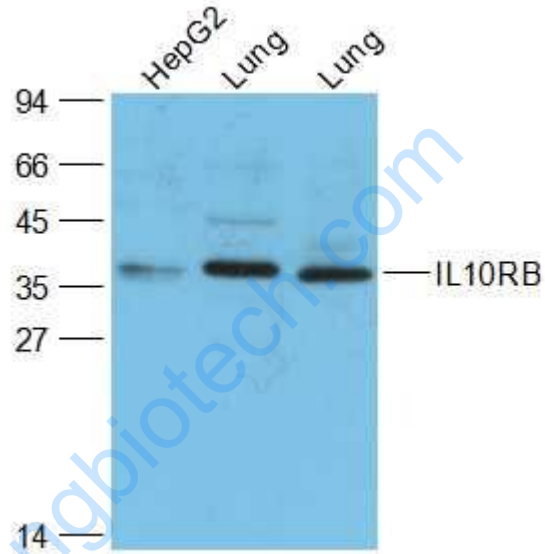
Product Name:	IL10RB
Chinese Name:	白细胞介素-10受体β抗体
Alias:	Cd210; CDw210b; CRF2 4; CRF2-4; CRFB4; Cytokine receptor class II; Cytokine receptor class II CRF2 4; Cytokine receptor class-II member 4; Cytokine receptor family 2 member 4; Cytokine receptor family II member 4; D21S58; D21S66; I10R2_HUMAN; IL-10 receptor subunit beta; IL-10R subunit 2; IL-10R subunit beta; IL-10R2; IL-10RB; IL10R2; IL10RB; Interleukin 10 receptor beta; Interleukin-10 receptor subunit 2; Interleukin-10 receptor subunit beta.
文献引用 PubMed :	<p>Specific References(1) SL2602R has been referenced in 1 publications.</p> <p>[IF=2.66]Lopuřná, Katarína, et al. "Murine gammaherpesvirus targets type I IFN receptor but not type III IFN receptor early in infection." Cytokine 83 (2016): 158-170.WB;Mouse.</p> <p style="text-align: right;">PubMed:27152708</p>
Organism Species:	Rabbit
Clonality:	Polyclonal
React Species:	Human,Mouse,Rat,Dog,Pig,Cow,Horse,Rabbit,
Applications:	WB=1:500-2000ELISA=1:500-1000IHC-P=1:400-800IHC-F=1:400-800IF=1:100-500 (Paraffin sections need antigen repair) not yet tested in other applications. optimal dilutions/concentrations should be determined by the end user.
Molecular weight:	39kDa
Cellular localization:	The cell membrane
Form:	Lyophilized or Liquid
Concentration:	1mg/ml
immunogen:	KLH conjugated synthetic peptide derived from human IL-10RB:21-120/325<Extracellular>
Lsotype:	IgG

Purification:	affinity purified by Protein A
Storage Buffer:	0.01M TBS(pH7.4) with 1% BSA, 0.03% Proclin300 and 50% Glycerol.
Storage:	Store at -20 °C for one year. Avoid repeated freeze/thaw cycles. The lyophilized antibody is stable at room temperature for at least one month and for greater than a year when kept at -20°C. When reconstituted in sterile pH 7.4 0.01M PBS or diluent of antibody the antibody is stable for at least two weeks at 2-4 °C.
PubMed:	PubMed
Product Detail:	<p>Interleukin 10 binds specifically and with high affinity to cell surface receptors. Interleukin 10 receptors are members of the class II subgroup of the cytokine receptor superfamily. Mouse and human cDNA clones encoding the ligand binding IL10 receptor have been isolated. The IL10 receptor complex contains two distinct type II cytokine receptor subunits, the ligand binding IL10RA and the IL10RB. The coexpression of both chains is essential for IL10 induced signal transduction. The beta chain serves as an accessory chain essential for the active IL10 receptor complex and necessary for the initiation of signal transduction. Interleukin 10 receptors are expressed in all cell types that are known to respond to IL10.</p> <p>Subcellular Location: Membrane; Single-pass type I membrane</p> <p>Similarity: Belongs to the type II cytokine receptor family. Contains 2 fibronectin type-III domains.</p> <p>SWISS: Q08334</p> <p>Gene ID: 3588</p> <p>Database links:</p> <p>Entrez Gene: 3588 Human</p> <p>Entrez Gene: 16155 Mouse</p> <p>Entrez Gene: 304091 Rat</p> <p>Omim: 123889 Human</p> <p>SwissProt: Q08334 Human</p> <p>SwissProt: Q61190 Mouse</p> <p>Unigene: 654593 Human</p>

[Unigene: 4154](#) Mouse

Important Note:

This product as supplied is intended for research use only, not for use in human, therapeutic or diagnostic applications.



Picture:

Sample:

HepG2(Human) Cell Lysate at 30 ug

Lung (Mouse) Lysate at 40 ug

Lung (Rat) Lysate at 40 ug

Primary: Anti-IL10RB (SL2602R) at 1/200 dilution

Secondary: IRDye800CW Goat Anti-Rabbit IgG at 1/20000 dilution

Predicted band size: 39 kD

Observed band size: 39 kD