



Rabbit Anti-IL17D antibody

SL2612R

Product Name:	IL17D
Chinese Name:	白介素-17D抗体
Alias:	Interleukin-17D; IL 17D; IL 27; IL17D; IL-17D; IL27; Interleukin 17D; Interleukin 27; Interleukin-17; pfam06083; IL17D HUMAN.
Organism Species:	Rabbit
Clonality:	Polyclonal
React Species:	Human,Mouse,Rat,Cow,
Applications:	WB=1:500-2000ELISA=1:500-1000IHC-P=1:400-800IHC-F=1:400-800IF=1:100-500 (Paraffin sections need antigen repair) not yet tested in other applications. optimal dilutions/concentrations should be determined by the end user.
Molecular weight:	20kDa
Cellular localization:	Secretory protein
Form:	Lyophilized or Liquid
Concentration:	1mg/ml
immunogen:	KLH conjugated synthetic peptide derived from human IL-17D:31-130/202
Lsotype:	IgG
Purification:	affinity purified by Protein A
Storage Buffer:	0.01M TBS(pH7.4) with 1% BSA, 0.03% Proclin300 and 50% Glycerol.
Storage:	Store at -20 °C for one year. Avoid repeated freeze/thaw cycles. The lyophilized antibody is stable at room temperature for at least one month and for greater than a year when kept at -20°C. When reconstituted in sterile pH 7.4 0.01M PBS or diluent of antibody the antibody is stable for at least two weeks at 2-4 °C.
PubMed:	PubMed
Product Detail:	The protein encoded by this gene is a cytokine that shares the sequence similarity with IL17. The treatment of endothelial cells with this cytokine has been shown to stimulate the production of other cytokines including IL6, IL8 and CSF2/ GM-CSF. The increased expression of IL8 induced by this cytokine was found to be NF-kappa B-dependent. [provided by RefSeq, Jul 2008]

Function:

Induces expression of IL-6, IL-8, and GM-CSF from endothelial cells.

Subcellular Location:

Secreted.

Tissue Specificity:

Expressed preferentially in adipose, skeletal muscle and CNS.

Similarity:

Belongs to the IL-17 family.

SWISS:

Q8TAD2

Gene ID:

53342

Database links:

[Entrez Gene: 53342](#)Human

[Entrez Gene: 239114](#)Mouse

[Omim: 607587](#)Human

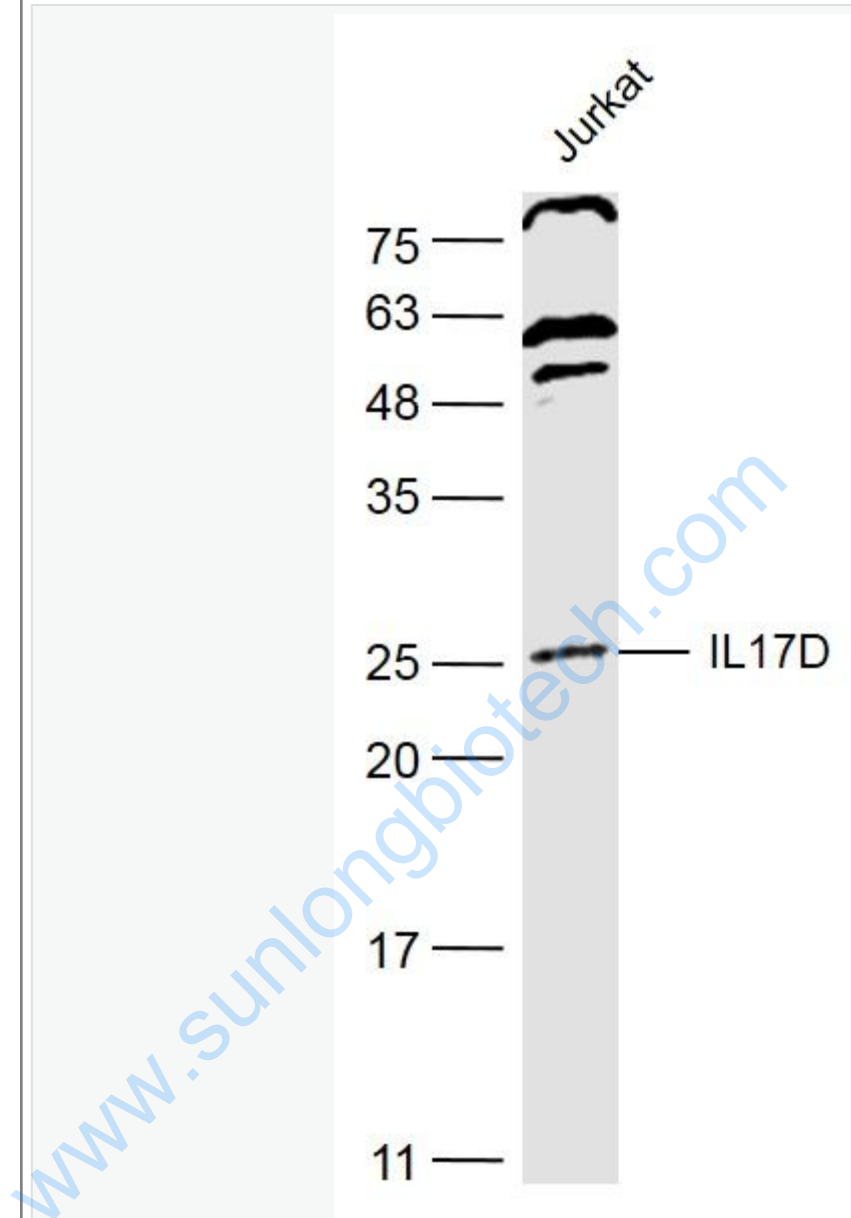
[SwissProt: Q8TAD2](#)Human

[Unigene: 655142](#)Human

Important Note:

This product as supplied is intended for research use only, not for use in human, therapeutic or diagnostic applications.

Picture:



Sample:

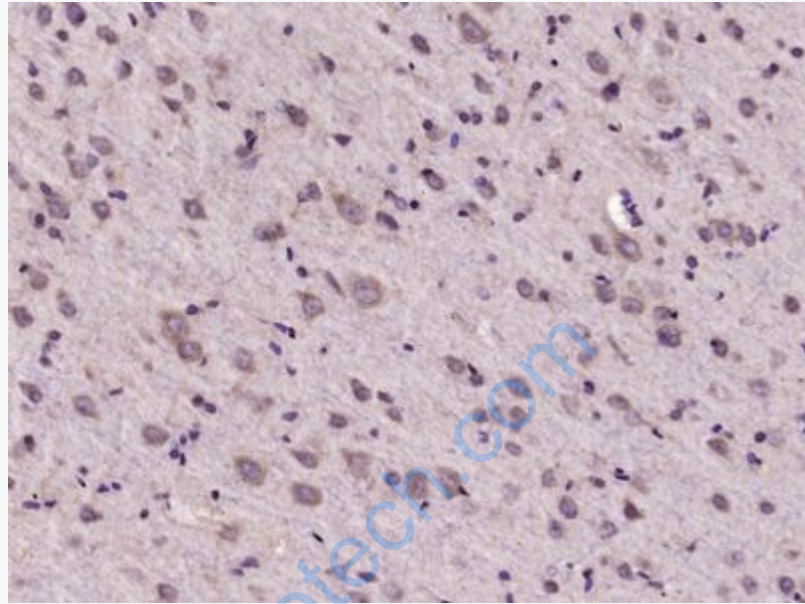
Jurkat (Human) Cell Lysate at 40 ug

Primary: Anti-IL17D (SL2612R) at 1/500 dilution

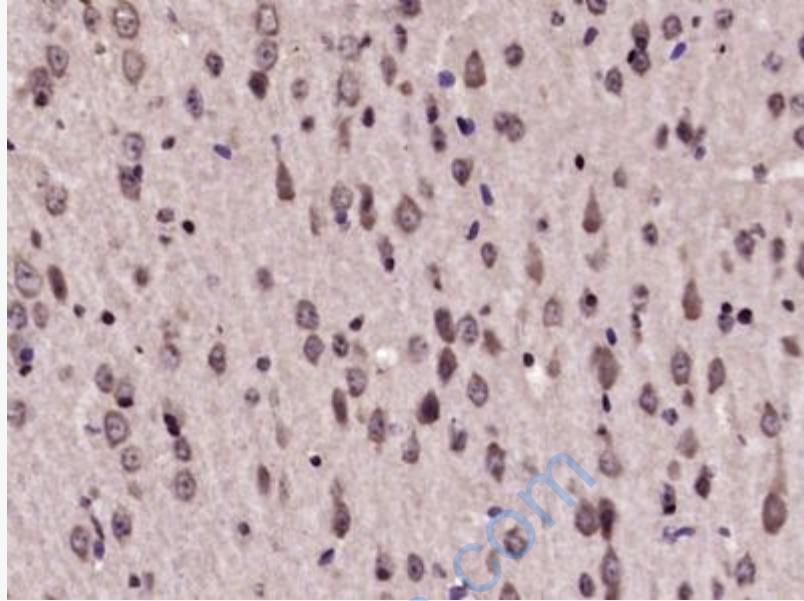
Secondary: IRDye800CW Goat Anti-Rabbit IgG at 1/20000 dilution

Predicted band size: 20 kD

Observed band size: 25 kD



Paraformaldehyde-fixed, paraffin embedded (Rat brain); Antigen retrieval by microwave in sodium citrate buffer (pH6.0) ; Block endogenous peroxidase by 3% hydrogen peroxide for 30 minutes; Blocking buffer (3% BSA) at RT for 30min; Antibody incubation with (IL17D) Polyclonal Antibody, Unconjugated (SL2612R) at 1:400 overnight at 4°C, followed by conjugation to the secondary antibody (labeled with HRP) and DAB staining.



Paraformaldehyde-fixed, paraffin embedded (Mouse brain); Antigen retrieval by microwave in sodium citrate buffer (pH6.0) ; Block endogenous peroxidase by 3% hydrogen peroxide for 30 minutes; Blocking buffer (3% BSA) at RT for 30min; Antibody incubation with (IL17D) Polyclonal Antibody, Unconjugated (SL2612R) at 1:400 overnight at 4°C, followed by conjugation to the secondary antibody (labeled with HRP) and DAB staining.