



## Rabbit Anti-IL-18R alpha antibody

SL2615R

<b>Product Name:</b>	IL-18R alpha
<b>Chinese Name:</b>	白细胞介素-18受体 $\alpha$ 链抗体
<b>Alias:</b>	interleukin-18 receptor alpha chain; Interleukin-18 receptor 1; IL-18R-1; IL-18R1; IL1 receptor-related protein; interleukin 1 receptor-like protein; IL-1Rrp; IL1R-rp; CD218 antigen-like family member A; CD218a; CDw218; CDw218a; CDw218a antigen; IL18RA; I118ralpha; IL1RRP; interleukin 18 receptor 1.
<b>文献引用</b> <b>PubMed</b> :	<b>Specific References(1)</b>  SL2615R has been referenced in 1 publications. <b>[IF=2.08]</b> Zhang, Jihong, et al. "Interleukin 18 augments growth ability via NF- $\kappa$ B and p38/ATF2 pathways by targeting cyclin B1, cyclin B2, cyclin A2, and Bcl-2 in BRL-3A rat liver cells." Gene (2015). <b>WB;Rat.</b> <a href="#">PubMed:25752290</a>
<b>Organism Species:</b>	Rabbit
<b>Clonality:</b>	Polyclonal
<b>React Species:</b>	Human,Mouse,Rat,Dog,Pig,Cow,
<b>Applications:</b>	WB=1:500-2000ELISA=1:500-2000IHC-P=1:400-800IHC-F=1:400-800Flow-Cyt=1 $\mu$ g/TestIF=1:100-500 (Paraffin sections need antigen repair) not yet tested in other applications. optimal dilutions/concentrations should be determined by the end user.
<b>Molecular weight:</b>	60kDa
<b>Cellular localization:</b>	The cell membrane
<b>Form:</b>	Lyophilized or Liquid
<b>Concentration:</b>	1mg/ml
<b>immunogen:</b>	KLH conjugated synthetic peptide derived from human IL-18R alpha:21-120/541<Extracellular>
<b>Lsotype:</b>	IgG
<b>Purification:</b>	affinity purified by Protein A
<b>Storage Buffer:</b>	0.01M TBS(pH7.4) with 1% BSA, 0.03% Proclin300 and 50% Glycerol.

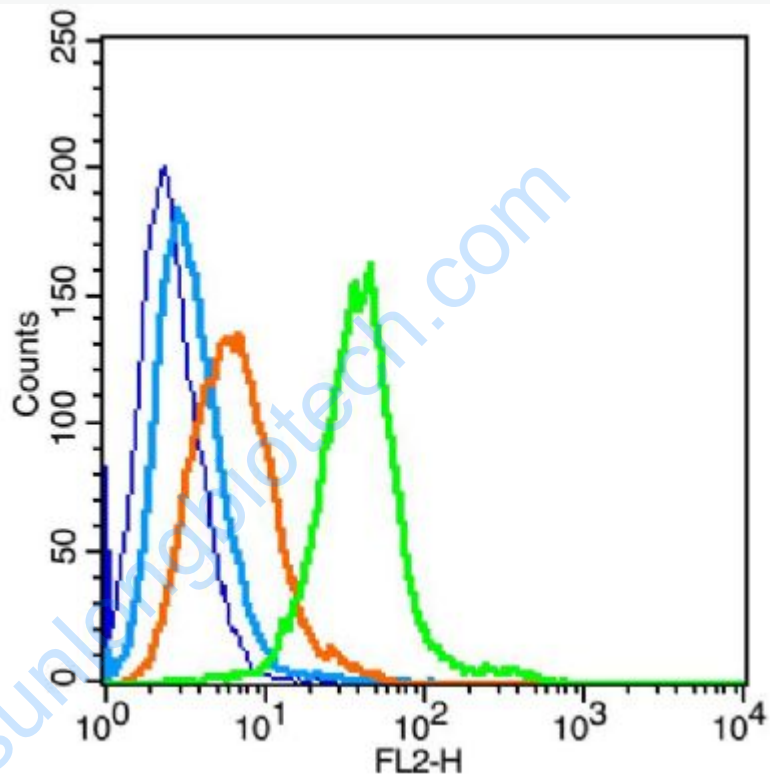
<b>Storage:</b>	Store at -20 °C for one year. Avoid repeated freeze/thaw cycles. The lyophilized antibody is stable at room temperature for at least one month and for greater than a year when kept at -20°C. When reconstituted in sterile pH 7.4 0.01M PBS or diluent of antibody the antibody is stable for at least two weeks at 2-4 °C.
<b>PubMed:</b>	<a href="#">PubMed</a>
<b>Product Detail:</b>	<p>The protein encoded by this gene is a cytokine receptor that belongs to the interleukin 1 receptor family. This receptor specifically binds interleukin 18 (IL18), and is essential for IL18 mediated signal transduction. IFN-alpha and IL12 are reported to induce the expression of this receptor in NK and T cells. This gene along with four other members of the interleukin 1 receptor family, including IL1R2, IL1R1, ILRL2 (IL-1Rrp2), and IL1RL1 (T1/ST2), form a gene cluster on chromosome 2q. Alternatively spliced transcript variants encoding different isoforms have been found for this gene. [provided by RefSeq, Sep 2013]</p> <p><b>Function:</b> Receptor for interleukin 18 (IL-18). Binding to the agonist leads to the activation of NF-kappa-B.</p> <p><b>Subunit:</b> Does not bind IL1A/interleukin-1 alpha or IL1B/interleukin-1 beta.</p> <p><b>Subcellular Location:</b> Membrane; Single-pass type I membrane protein.</p> <p><b>Tissue Specificity:</b> Expressed in lung, leukocytes, spleen, liver, thymus, prostate, small intestine, colon, placenta, and heart, and is absent from brain, skeletal muscle, pancreas, and kidney. High level of expression in Hodgkin disease cell lines.</p> <p><b>Similarity:</b> Belongs to the interleukin-1 receptor family. Contains 3 Ig-like C2-type (immunoglobulin-like) domains. Contains 1 TIR domain.</p> <p><b>SWISS:</b> Q13478</p> <p><b>Gene ID:</b> 8809</p> <p><b>Database links:</b> <a href="#">Entrez Gene: 8809</a>Human <a href="#">Omim: 604494</a>Human <a href="#">SwissProt: Q13478</a>Human</p>

[Unigene: 469521](#)Human

**Important Note:**

This product as supplied is intended for research use only, not for use in human, therapeutic or diagnostic applications.

Picture:



Blank control(blue): Raji (fixed with 2% paraformaldehyde (10 min) , then permeabilized with 90% ice-cold methanol for 30 min on ice).

Primary Antibody: Rabbit Anti-IL-18R alpha antibody(SL2615R), Dilution: 1 $\mu$ g in 100  $\mu$ L 1X PBS containing 0.5% BSA;

Isotype Control Antibody: Rabbit IgG(orange),used under the same conditions );

Secondary Antibody: Goat anti-rabbit IgG-PE(white blue), Dilution: 1:200 in 1 X PBS containing 0.5% BSA.