



Rabbit Anti-IL21R antibody

SL2622R

Product Name:	IL21R
Chinese Name:	白介素21受体抗体
Alias:	IL 21R; IL-21R; IL21 Receptor; IL21R; Interleukin 21 receptor; MGC10967; NILR; IL21R_HUMAN; CD360; IL-21 receptor; IL21 Receptor; Interleukin-21 receptor; Novel interleukin receptor.
文献引用 PubMed :	Specific References(1) SL2622R has been referenced in 1 publications. [IF=3.06] Guan, Li-juan, et al. "Increased IL-21/IL-21R expression and its proinflammatory effects in autoimmune thyroid disease." Cytokine 72.2 (2015): 160-165. IHC-P;Human. PubMed:25647271
Organism Species:	Rabbit
Clonality:	Polyclonal
React Species:	Human,Mouse,Rat,Cow,
Applications:	WB=1:500-2000ELISA=1:500-1000IHC-P=1:400-800IHC-F=1:400-800IF=1:100-500 (Paraffin sections need antigen repair) not yet tested in other applications. optimal dilutions/concentrations should be determined by the end user.
Molecular weight:	57kDa
Cellular localization:	The cell membrane
Form:	Lyophilized or Liquid
Concentration:	1mg/ml
immunogen:	KLH conjugated synthetic peptide derived from human IL-21R:441-538/538
Lsotype:	IgG
Purification:	affinity purified by Protein A
Storage Buffer:	0.01M TBS(pH7.4) with 1% BSA, 0.03% Proclin300 and 50% Glycerol.
Storage:	Store at -20 °C for one year. Avoid repeated freeze/thaw cycles. The lyophilized antibody is stable at room temperature for at least one month and for greater than a year

	when kept at -20°C. When reconstituted in sterile pH 7.4 0.01M PBS or diluent of antibody the antibody is stable for at least two weeks at 2-4 °C.
PubMed:	PubMed
Product Detail:	<p>The protein encoded by this gene is a cytokine receptor for interleukin 21 (IL21). It belongs to the type I cytokine receptors, and has been shown to form a heterodimeric receptor complex with the common gamma-chain, a receptor subunit also shared by the receptors for interleukin 2, 4, 7, 9, and 15. This receptor transduces the growth promoting signal of IL21, and is important for the proliferation and differentiation of T cells, B cells, and natural killer (NK) cells. The ligand binding of this receptor leads to the activation of multiple downstream signaling molecules, including JAK1, JAK3, STAT1, and STAT3. Knockout studies of a similar gene in mouse suggest a role for this gene in regulating immunoglobulin production. Three alternatively spliced transcript variants have been described. [provided by RefSeq, Jul 2010]</p> <p>Function: This is a receptor for interleukin-21.</p> <p>Subunit: Heterodimer with the common gamma subunit. Associates with JAK1.</p> <p>Subcellular Location: Membrane; Single-pass type I membrane protein.</p> <p>Tissue Specificity: Selectively expressed in lymphoid tissues. Most highly expressed in thymus and spleen.</p> <p>Post-translational modifications: C-mannosylated at Trp-214 in the WSXWS motif, the sugar chain makes extensive hydrogen bonds with Asn-73 sugar, and bridges the two fibronectin domains transforming the V-shaped receptor into an A-frame.</p> <p>Similarity: Belongs to the type I cytokine receptor family. Type 4 subfamily. Contains 2 fibronectin type-III domains.</p> <p>SWISS: Q9HBE5</p> <p>Gene ID: 50615</p> <p>Database links: Entrez Gene: 50615Human Entrez Gene: 60504Mouse</p>

[Entrez Gene: 308977](#)Rat

[Omim: 605383](#)Human

[SwissProt: Q9HBE5](#)Human

[SwissProt: Q9JHX3](#)Mouse

[SwissProt: Q5EBB1](#)Rat

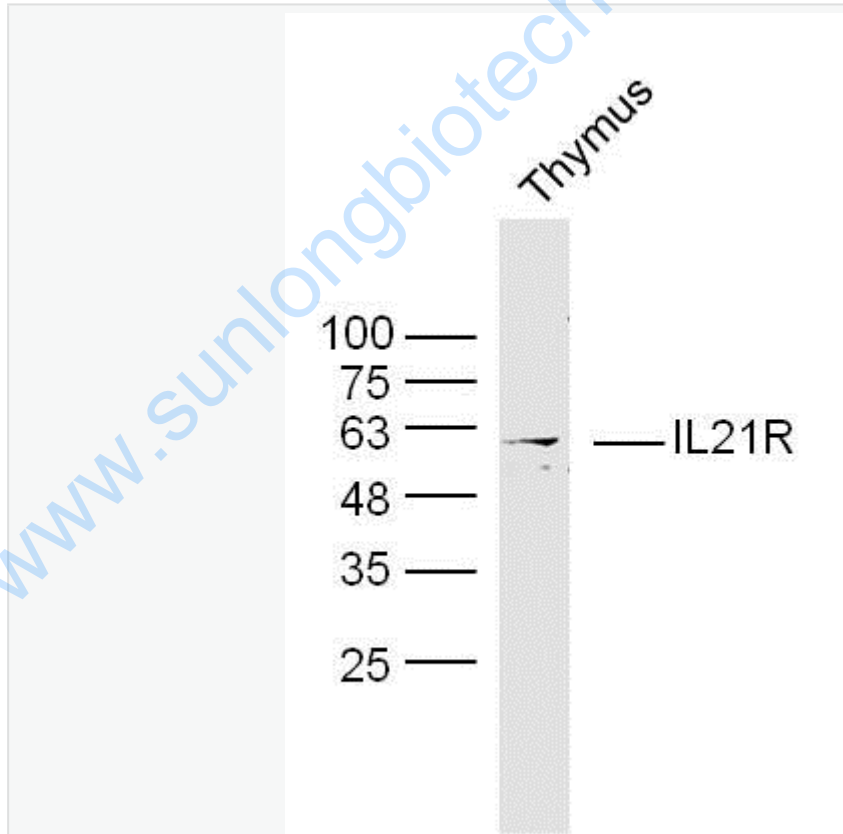
[Unigene: 210546](#)Human

[Unigene: 155643](#)Mouse

Important Note:

This product as supplied is intended for research use only, not for use in human, therapeutic or diagnostic applications.

Picture:



Sample:

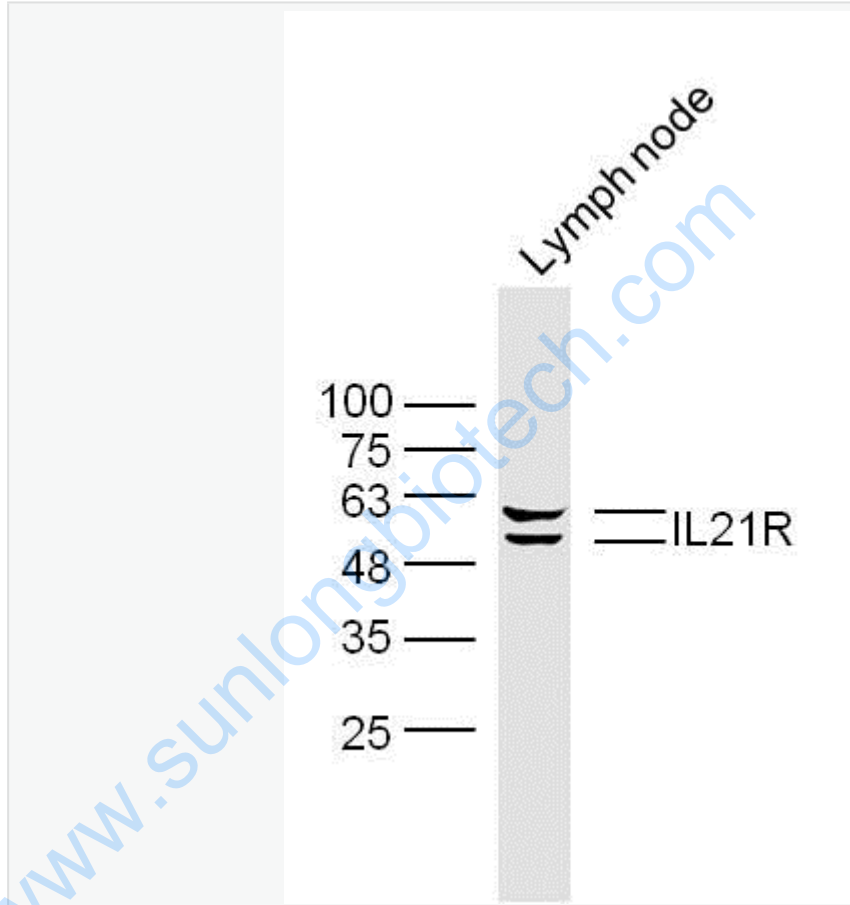
Thymus (Mouse) Lysate at 40 ug

Primary: Anti- IL21R (SL2622R) at 1/300 dilution

Secondary: IRDye800CW Goat Anti-Rabbit IgG at 1/20000 dilution

Predicted band size: 55 kD

Observed band size: 55 kD



Sample:

Lymph node (Mouse) Lysate at 40 ug

Primary: Anti- IL21R (SL2622R) at 1/300 dilution

Secondary: IRDye800CW Goat Anti-Rabbit IgG at 1/20000 dilution

Predicted band size: 55 kD

Observed band size: 55 kD

