



Rabbit Anti-IL22 antibody

SL2623R

Product Name:	IL22
Chinese Name:	白介素-22抗体
Alias:	Interleukin-22; Il22; IL-22; Iltif; ILTIFa; MGC129416; MGC129417; IL-10-related T-cell-derived-inducible factor; IL-TIF; IL-TIF alpha; Interleukin-22a; IL-22a; IL 21; IL D110; IL TIF; IL21; IL22; ILD110; interleukin 21; MGC79382; MGC79384; TIFa; TIFIL 23; TIFIL23; zcyto18.
文献引用 PubMed :	<p>Specific References(3)SL2623R has been referenced in 3 publications.</p> <p>[IF=2.09]Huang, Yong-Hong, et al. "Th22 cell accumulation is associated with colorectal cancer development."World Journal of Gastroenterology IHC-P; PubMed:25892871</p> <p>[IF=1.42]Karaboga, ?hsan, Selim Demirtas, and Turan Karaca. "Investigation of the relationship between the Th17/IL-23 pathway and innate-adaptive immune system in TNBS-induced colitis in rats." Iranian Journal of Basic Medical Sciences 20.8 (2017): 870-879.WB;Rat. PubMed:0</p> <p>[IF=0.00]Zhang, Yan, and Mikhail G. Kolonin. "Cytokine signaling regulating adipose stromal cell trafficking." Adipocyte 5.4 (2016): 369-374.IHC-P;Mouse. PubMed:27994950</p>
Organism Species:	Rabbit
Clonality:	Polyclonal
React Species:	Human,Mouse,Rat,Dog,
Applications:	WB=1:500-2000ELISA=1:500-1000IHC-P=1:400-800IHC-F=1:400-800Flow-Cyt=1μg/testIF=1:100-500 (Paraffin sections need antigen repair) not yet tested in other applications.

	optimal dilutions/concentrations should be determined by the end user.
Molecular weight:	17kDa
Cellular localization:	Secretory protein
Form:	Lyophilized or Liquid
Concentration:	1mg/ml
immunogen:	KLH conjugated synthetic peptide derived from human IL-22:35-179/179
Lsotype:	IgG
Purification:	affinity purified by Protein A
Storage Buffer:	0.01M TBS(pH7.4) with 1% BSA, 0.03% Proclin300 and 50% Glycerol.
Storage:	Store at -20 °C for one year. Avoid repeated freeze/thaw cycles. The lyophilized antibody is stable at room temperature for at least one month and for greater than a year when kept at -20°C. When reconstituted in sterile pH 7.4 0.01M PBS or diluent of antibody the antibody is stable for at least two weeks at 2-4 °C.
PubMed:	PubMed
Product Detail:	<p>This gene was identified by its overexpression specifically in herpesvirus samimiri-transformed T cells. The encoded protein is a member of the IL10 family of cytokines. It is a secreted protein and may function as a homodimer. This protein is thought to contribute to the transformed phenotype of T cells after infection by herpesvirus samimiri. [provided by RefSeq].</p> <p>Function: Cytokine that contributes to the inflammatory response in vivo.</p> <p>Subcellular Location: Secreted.</p> <p>Similarity: Belongs to the IL-10 family.</p> <p>SWISS: Q9GZX6</p> <p>Gene ID: 50616</p> <p>Database links:</p> <p>Entrez Gene: 50616Human</p> <p>Entrez Gene: 50929Mouse</p> <p>Entrez Gene: 500836Rat</p> <p>Omim: 605330Human</p> <p>SwissProt: Q9GZX6Human</p> <p>SwissProt: Q9JJY9Mouse</p>

[Unigene: 287369](#)Human

[Unigene: 103585](#)Mouse

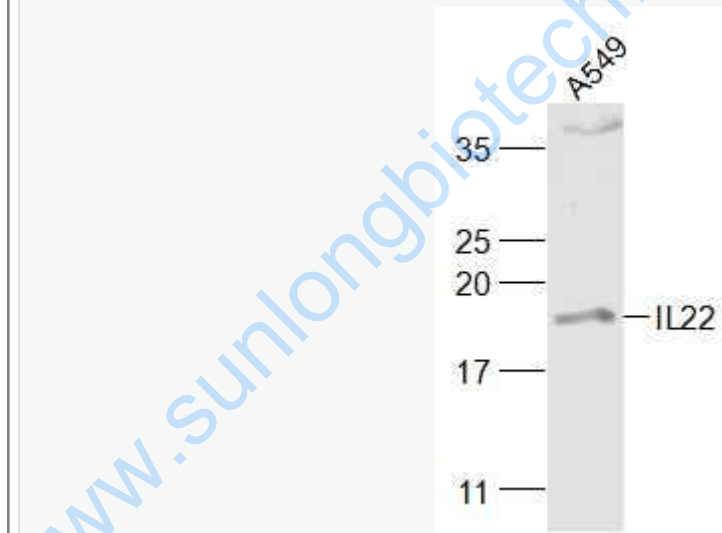
[Unigene: 195879](#)Rat

Important Note:

This product as supplied is intended for research use only, not for use in human, therapeutic or diagnostic applications.

IL-22是白介素-10家族的成员,主要是由激活的T lymphocyte产生的一类重要的cell factor,除了在Th17细胞中高表达之外,在NK和NKT等细胞中也有表达,在组织损伤修复以及牛皮癣、肝炎、肺炎、肠炎等慢性炎症中发挥重要作用.IL-22是继IL-6和IL-10之后又一个参与炎症反应和代谢调控的cell factor, IL-22有可能成为干预脂肪肝发生发展的新方法。

Picture:



Sample:

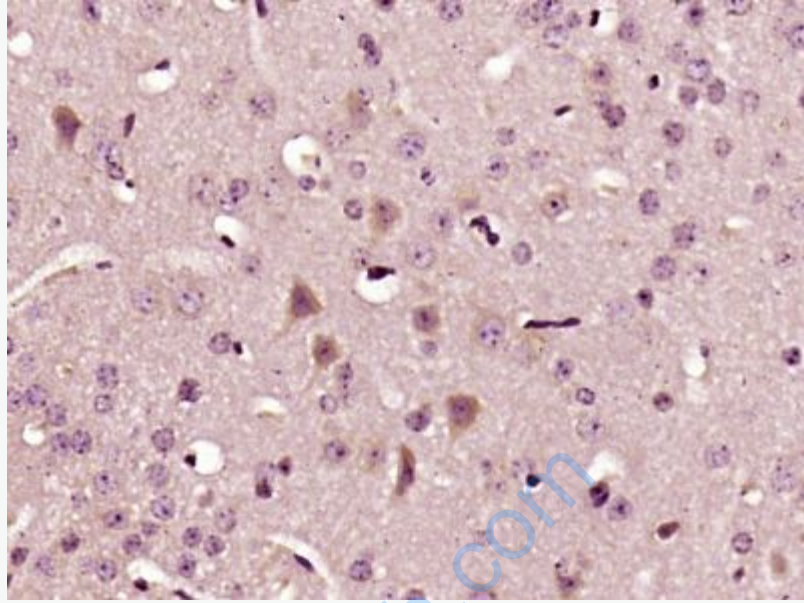
A549(Human) Cell Lysate at 30 ug

Primary: Anti-IL22 (SL2623R) at 1/1000 dilution

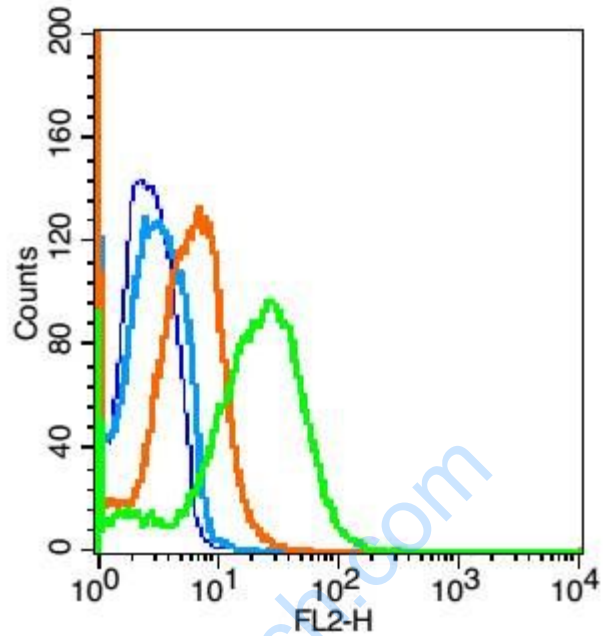
Secondary: IRDye800CW Goat Anti-Rabbit IgG at 1/20000 dilution

Predicted band size: 17 kD

Observed band size: 19 kD



Paraformaldehyde-fixed, paraffin embedded (Mouse brain); Antigen retrieval by boiling in sodium citrate buffer (pH6.0) for 15min; Block endogenous peroxidase by 3% hydrogen peroxide for 20 minutes; Blocking buffer (normal goat serum) at 37°C for 30min; Antibody incubation with (IL22) Polyclonal Antibody, Unconjugated (SL2623R) at 1:400 overnight at 4°C, followed by a conjugated secondary antibody (sp-0023) for 20 minutes and DAB staining.



Blank control(blue): Mouse liver cells(fixed with 2% paraformaldehyde (10 min) , then permeabilized with 90% ice-cold methanol for 30 min on ice).

Primary Antibody: Rabbit Anti-IL22 antibody(SL2623R), Dilution: 1 μ g in 100 μ L 1X PBS containing 0.5% BSA;

Isotype Control Antibody: Rabbit IgG (orange) ,used under the same conditions.

Secondary Antibody: Goat anti-rabbit IgG-PE(white blue), Dilution: 1:200 in 1 X PBS containing 0.5% BSA.