



Rabbit Anti-IL22R antibody

SL2624R

Product Name:	IL22R
Chinese Name:	白介素22受体抗体
Alias:	IL-22R; CRF2 9; IL22 Receptor Alpha; cytokine receptor classII member 9; cytokine receptor family 2 member 9; IL-22 receptor subunit alpha-1; IL-22R-alpha-1; IL22R; IL22R1; IL22RA1; ILTIF R1 chain; Interleukin 22 Receptor alpha 1; Interleukin 22 Receptor; Interleukin-22 receptor subunit alpha-1; ZcytoR11; I22R1_HUMAN; IL-22 receptor subunit alpha-1; IL-22RA1; Cytokine receptor class-II member 9; Cytokine receptor family 2 member 9; CRF2-9.
文献引用 PubMed :	<p>Specific References(2) SL2624R has been referenced in 2 publications.</p> <p>[IF=2.09]Guo, Yujie, et al. "IL-22-producing Th22 cells play a protective role in CVB3-induced chronic myocarditis and dilated cardiomyopathy by inhibiting myocardial fibrosis." Virology Journal 11.1 (2014): 2511.IHC-P;Mouse. PubMed:25547181</p> <p>[IF=0.00]Zhang, Yan, and Mikhail G. Kolonin. "Cytokine signaling regulating adipose stromal cell trafficking." Adipocyte 5.4 (2016): 369-374.IHC-P;Mouse. PubMed:27994950</p>
Organism Species:	Rabbit
Clonality:	Polyclonal
React Species:	Human,Mouse,Rat,Dog,Pig,Cow,Horse,Rabbit,Guinea Pig,
Applications:	WB=1:500-2000ELISA=1:500-1000 not yet tested in other applications. optimal dilutions/concentrations should be determined by the end user.
Molecular weight:	61kDa
Cellular localization:	The cell membrane
Form:	Lyophilized or Liquid
Concentration:	1mg/ml

immunogen:	KLH conjugated synthetic peptide derived from human IL-22R:41-150/574<Extracellular>
Lsotype:	IgG
Purification:	affinity purified by Protein A
Storage Buffer:	0.01M TBS(pH7.4) with 1% BSA, 0.03% Proclin300 and 50% Glycerol.
Storage:	Store at -20 °C for one year. Avoid repeated freeze/thaw cycles. The lyophilized antibody is stable at room temperature for at least one month and for greater than a year when kept at -20°C. When reconstituted in sterile pH 7.4 0.01M PBS or diluent of antibody the antibody is stable for at least two weeks at 2-4 °C.
PubMed:	PubMed
Product Detail:	<p>The protein encoded by this gene belongs to the class II cytokine receptor family, and has been shown to be a receptor for interleukin 22 (IL22). IL22 receptor is a protein complex that consists of this protein and interleukin 10 receptor, beta (IL10RB/CRFB4), a subunit also shared by the receptor complex for interleukin 10 (IL10). This gene and interleukin 28 receptor, alpha (IL28RA) form a cytokine receptor gene cluster in the chromosomal region 1p36. [provided by RefSeq, Jul 2008].</p> <p>Function: Component of the receptor for IL20, IL22 and IL24. Component of IL22 receptor formed by IL22RA1 and IL10RB enabling IL22 signaling via JAK/STAT pathways. IL22 also induces activation of MAPK1/MAPK3 and Akt kinases pathways. Component of one of the receptor for IL20 and IL24 formed by IL22RA1 and IL20RB also signaling through STATs activation. Mediates IL24 antiangiogenic activity as well as IL24 inhibitory effect on endothelial cell tube formation and differentiation.</p> <p>Subunit: Heterodimer with IL10RB and with IL20RB.</p> <p>Subcellular Location: Membrane; Single-pass type I membrane protein.</p> <p>Tissue Specificity: Expressed in kidney, liver and lung.</p> <p>Similarity: Belongs to the type II cytokine receptor family. Contains 2 fibronectin type-III domains.</p> <p>SWISS: Q8N6P7</p> <p>Gene ID: 58985</p> <p>Database links:</p>

[Entrez Gene: 58985](#)Human

[Omid: 605457](#)Human

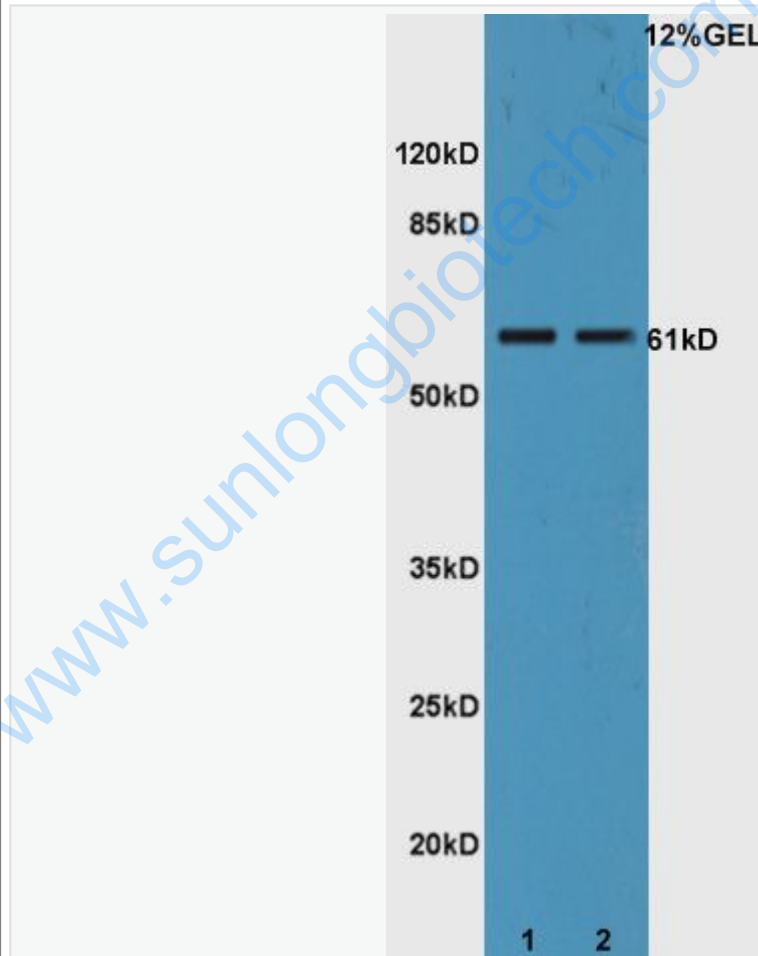
[SwissProt: Q8N6P7](#)Human

[Unigene: 110915](#)Human

Important Note:

This product as supplied is intended for research use only, not for use in human, therapeutic or diagnostic applications.

Picture:



Sample:

Lane1: Liver(Mouse) Lysate at 30 ug

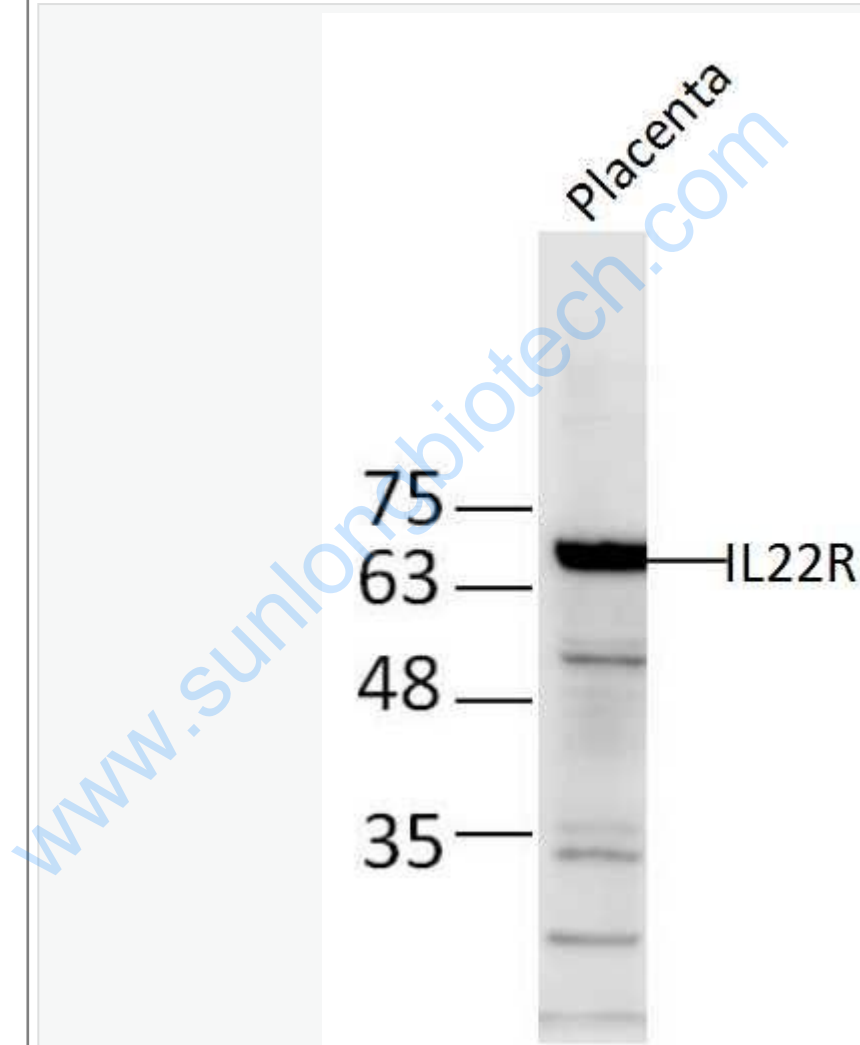
Lane2: Intestinal(Mouse) Lysate at 30 ug

Primary: Anti-IL22R (SL2624R) at 1:300 dilution;

Secondary: HRP conjugated Goat-Anti-Rabbit IgG(SL2624R) at 1: 5000 dilution;

Predicted band size : 61kD

Observed band size : 61kD



Sample:

placenta (Mouse) Lysate at 40 ug

Primary: Anti-IL22R (Bs-2624R) at 1/300 dilution

Secondary: IRDye800CW Goat Anti-Rabbit IgG at 1/20000 dilution

	<p>Predicted band size: 61 kD</p>
--	-----------------------------------

	<p>Observed band size: 65 kD</p>
--	----------------------------------

www.sunlongbiotech.com