



Rabbit Anti-IL22BP antibody

SL2625R

Product Name:	IL22BP
Chinese Name:	白介素22受体Binding protein抗体
Alias:	IL22RA2; Interleukin-22 receptor subunit alpha-2; IL-22 receptor subunit alpha-2; IL-22R-alpha-2; IL-22RA2; Interleukin-22-binding protein; IL-22BP; IL22BP; Cytokine receptor family 2 member 10; CRF2-10; Cytokine receptor class-II member 10; Cytokine receptor family type 2, soluble 1; CRF2-S1; ZcytoR16; I22R2 HUMAN.
Organism Species:	Rabbit
Clonality:	Polyclonal
React Species:	Human,Mouse,Rat,
Applications:	WB=1:500-2000ELISA=1:500-1000IHC-P=1:400-800IHC-F=1:400-800Flow-Cyt=1μg/testIF=1:100-500 (Paraffin sections need antigen repair) not yet tested in other applications. optimal dilutions/concentrations should be determined by the end user.
Molecular weight:	28(hu)/25(mo, rakDa)
Cellular localization:	Secretory protein
Form:	Lyophilized or Liquid
Concentration:	1mg/ml
immunogen:	KLH conjugated synthetic peptide derived from human IL-22BP:165-263/263
Lsotype:	IgG
Purification:	affinity purified by Protein A
Storage Buffer:	0.01M TBS(pH7.4) with 1% BSA, 0.03% Proclin300 and 50% Glycerol.
Storage:	Store at -20 °C for one year. Avoid repeated freeze/thaw cycles. The lyophilized antibody is stable at room temperature for at least one month and for greater than a year when kept at -20°C. When reconstituted in sterile pH 7.4 0.01M PBS or diluent of antibody the antibody is stable for at least two weeks at 2-4 °C.
PubMed:	PubMed
Product Detail:	There are two isoforms of IL22 RA2 produce by alternative splicing. Isoform 1 may play a role in establishing and maintaining successful pregnancy. Isoform 2 is a receptor for IL22. Binds to IL22, prevents interaction with the functional IL-22R complex and blocks the activity of IL22 (in vitro). It may play an important role as an IL22 antagonist

in the regulation of inflammatory responses.

Function:

Isoform 2 is a receptor for IL22. Binds to IL22, prevents interaction with the functional IL-22R complex and blocks the activity of IL22 (in vitro). May play an important role as an IL22 antagonist in the regulation of inflammatory responses.

Isoform 1 may play a role in establishing and maintaining successful pregnancy.

Subcellular Location:

Secreted.

Tissue Specificity:

Expressed in placenta, spleen, breast, skin and lung. Also detected in intestinal tract, testis, brain, heart and thymus. No expression found in prostate, bladder, kidney, ovary, muscle, bone marrow, liver and uterus. Isoform 1 is expressed only in placenta. Isoform 2 is expressed in placenta and breast and at lower level in spleen, skin, thymus and stomach.

Similarity:

Belongs to the type II cytokine receptor family.

Contains 3 fibronectin type-III domains.

SWISS:

Q969J5

Gene ID:

116379

Database links:

[Entrez Gene: 116379](#)Human

[Omin: 606648](#)Human

[SwissProt: Q969J5](#)Human

[Unigene: 126891](#)Human

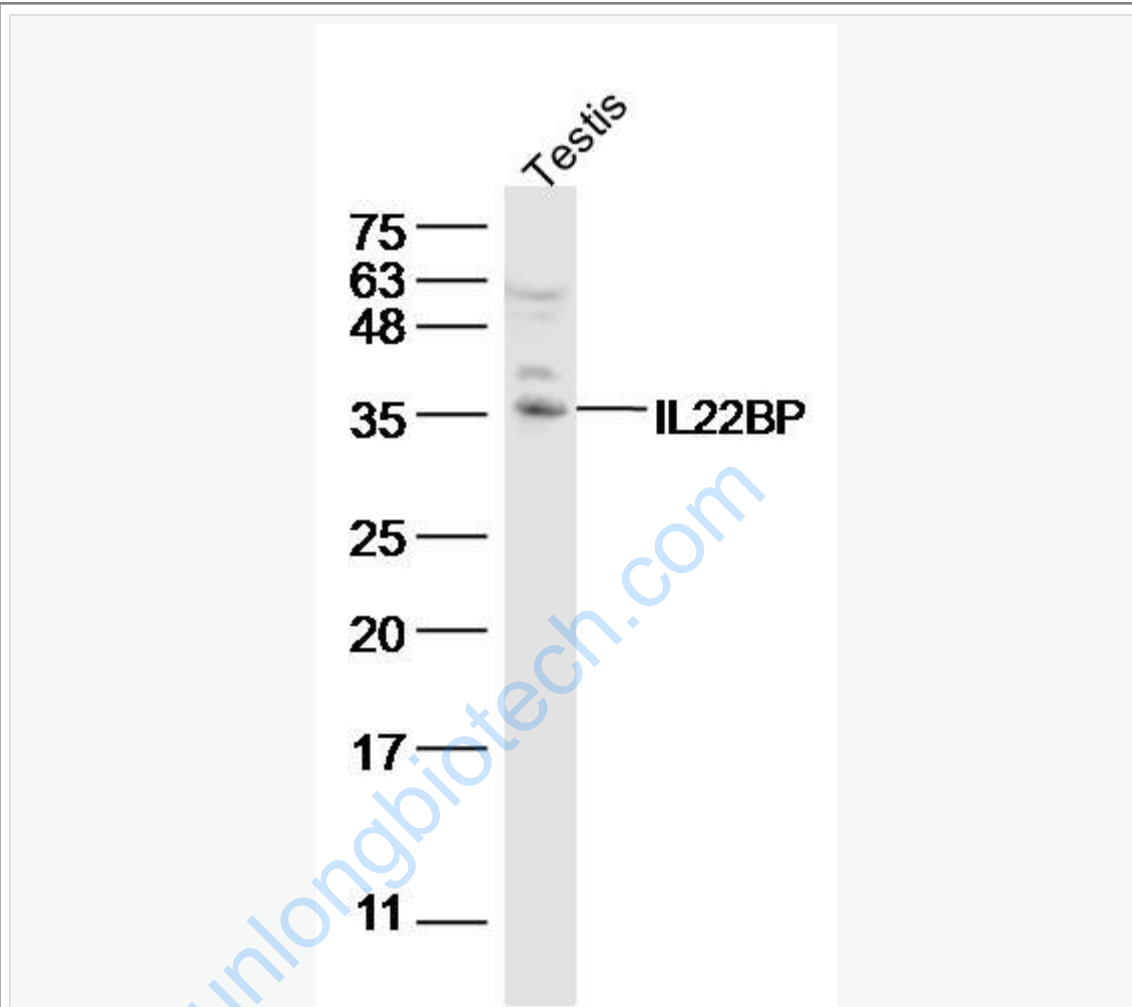
Important Note:

This product as supplied is intended for research use only, not for use in human, therapeutic or diagnostic applications.

白介素22Binding protein是一种新型的 II 类cell

factor受体家族成员, 它能直接结合IL-22, 作为IL-22的拮抗剂, 发挥着多种生物学功能。

Picture:



Sample:

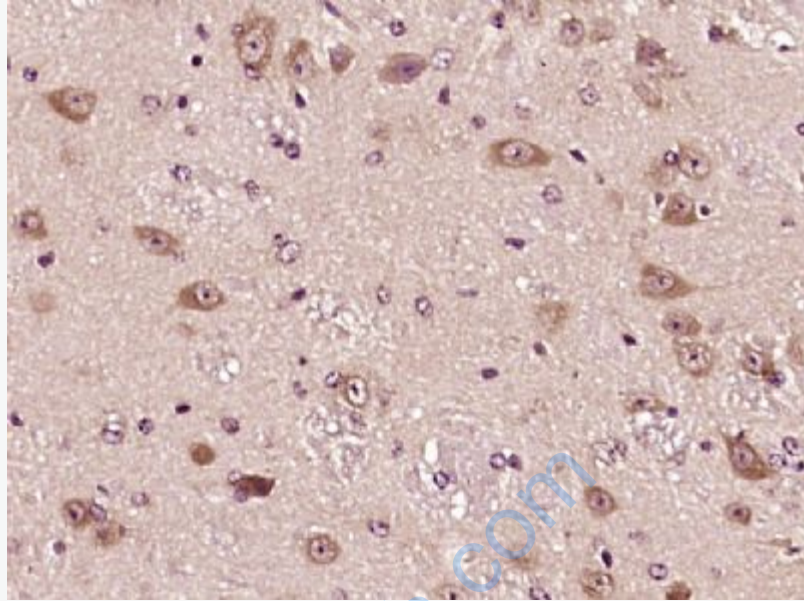
testis(rat) Lysate at 40 ug

Primary: Anti-IL22BP (SL2625R) at 1/300 dilution

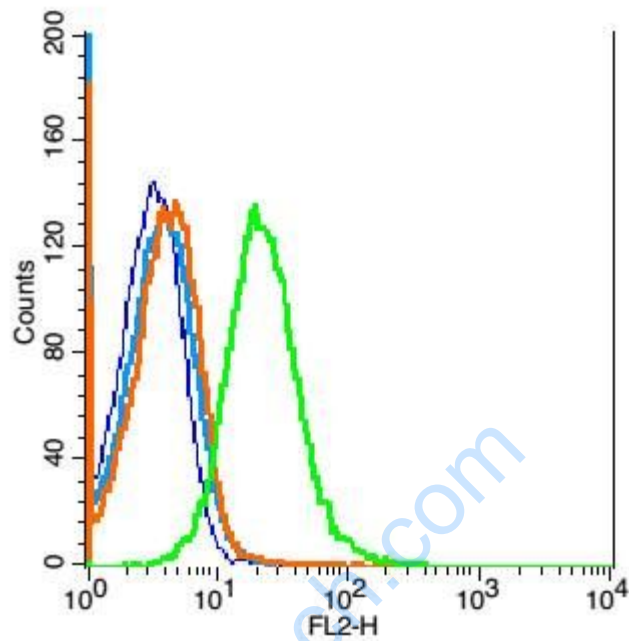
Secondary: IRDye800CW Goat Anti-Rabbit IgG at 1/20000 dilution

Predicted band size: 25/28kD

Observed band size: 35 kD



Paraformaldehyde-fixed, paraffin embedded (Mouse brain); Antigen retrieval by boiling in sodium citrate buffer (pH6.0) for 15min; Block endogenous peroxidase by 3% hydrogen peroxide for 20 minutes; Blocking buffer (normal goat serum) at 37°C for 30min; Antibody incubation with (IL22BP) Polyclonal Antibody, Unconjugated (SL2625R) at 1:400 overnight at 4°C, followed by operating according to SP Kit(Rabbit) (sp-0023) instructions and DAB staining.



Blank control: mouse spleen sells(blue), the cells were fixed with 2% paraformaldehyde (10 min) and then permeabilized with ice-cold 90% methanol for 30 min on ice.

Isotype Control Antibody: Rabbit IgG(orange) ; Secondary Antibody: Goat anti-rabbit IgG-PE(white blue), Dilution: 1:200 in 1 X PBS containing 0.5% BSA ;

Primary Antibody Dilution: 1 μ g in 100 μ L1X PBS containing 0.5% BSA(green).