



Rabbit Anti-CD85c antibody

SL2658R

Product Name:	CD85c
Chinese Name:	白细胞免疫球蛋白样受体8抗体
Alias:	Leukocyte immunoglobulin-like receptor 8; Leukocyte immunoglobulin-like receptor subfamily B member 5; CD85 antigen-like family member C; Leukocyte immunoglobulin-like receptor 8; CD85c; CD85 antigen-like family member C; CD85c; Leukocyte immunoglobulin-like receptor 8; Leukocyte immunoglobulin-like receptor subfamily B member 5; LILRB5; LIR-8; LIR8; LIRB5 HUMAN
Organism Species:	Rabbit
Clonality:	Polyclonal
React Species:	Human,Mouse,Rat,
Applications:	WB=1:500-2000ELISA=1:500-1000IHC-P=1:400-800IHC-F=1:400-800Flow-Cyt=1 μ g/testIF=1:100-500 (Paraffin sections need antigen repair) not yet tested in other applications. optimal dilutions/concentrations should be determined by the end user.
Molecular weight:	98kDa
Cellular localization:	The cell membrane
Form:	Lyophilized or Liquid
Concentration:	1mg/ml
immunogen:	KLH conjugated synthetic peptide derived from human LIR8:151-250/590
Lsotype:	IgG
Purification:	affinity purified by Protein A
Storage Buffer:	0.01M TBS(pH7.4) with 1% BSA, 0.03% Proclin300 and 50% Glycerol.
Storage:	Store at -20 °C for one year. Avoid repeated freeze/thaw cycles. The lyophilized antibody is stable at room temperature for at least one month and for greater than a year when kept at -20°C. When reconstituted in sterile pH 7.4 0.01M PBS or diluent of antibody the antibody is stable for at least two weeks at 2-4 °C.
PubMed:	PubMed
Product Detail:	This gene is a member of the leukocyte immunoglobulin-like receptor (LIR) family, which is found in a gene cluster at chromosomal region 19q13.4. The encoded protein belongs to the subfamily B class of LIR receptors which contain two or four

extracellular immunoglobulin domains, a transmembrane domain, and two to four cytoplasmic immunoreceptor tyrosine-based inhibitory motifs (ITIMs). Several other LIR subfamily B receptors are expressed on immune cells where they bind to MHC class I molecules on antigen-presenting cells and inhibit stimulation of an immune response. Multiple transcript variants encoding different isoforms have been found for this gene. [provided by RefSeq]

Function:

May act as receptor for class I MHC antigens.

Subcellular Location:

Membrane.

Tissue Specificity:

Detected in a natural killer (NK) cells.

Similarity:

Contains 4 Ig-like C2-type (immunoglobulin-like) domains.

SWISS:

O75023

Gene ID:

10990

Database links:

[Entrez Gene: 10990](#)Human

[Oimim: 604814](#)Human

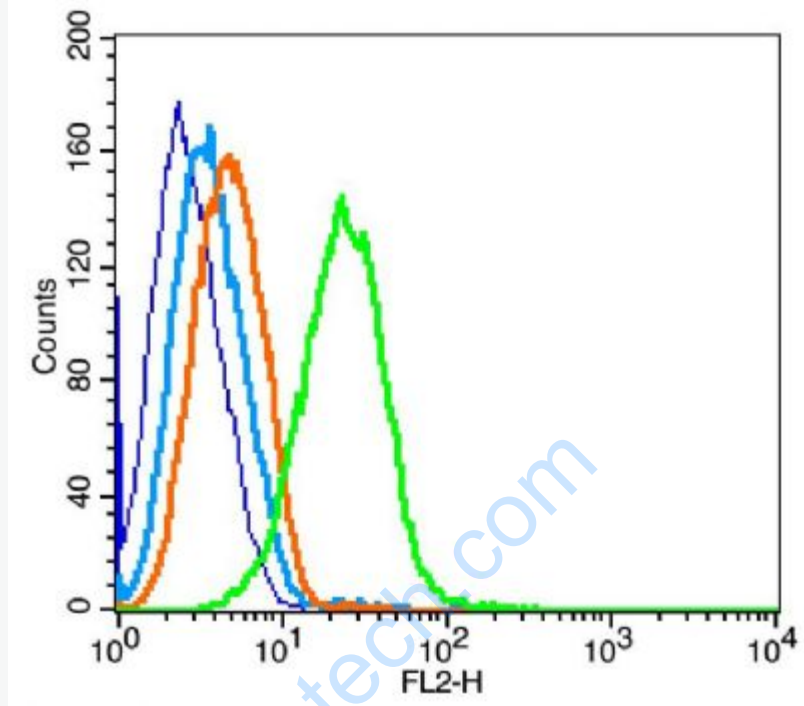
[SwissProt: O75023](#)Human

[Unigene: 655338](#)Human

Important Note:

This product as supplied is intended for research use only, not for use in human, therapeutic or diagnostic applications.

Picture:



Blank control(blue): Raji(fixed with 2% paraformaldehyde (10 min)).

Primary Antibody:Rabbit Anti- D85c antibody(SL2658R), Dilution: 1 μ g in 100 μ L
1X PBS containing 0.5% BSA;

Isotype Control Antibody: Rabbit IgG(orange) ,used under the same conditions);

Secondary Antibody: Goat anti-rabbit IgG-PE(white blue), Dilution: 1:200 in 1 X
PBS containing 0.5% BSA.