



## Rabbit Anti-MARCO antibody

SL2659R

|                               |   |
|-------------------------------|---|
| <b>Product Name:</b>          | MARCO   |
| <b>Chinese Name:</b>          | 巨噬细胞清道夫受体抗体   |
| <b>Alias:</b>                 | Macrophage receptor MARCO; Marco; MARCO_HUMAN; Macrophage receptor with collagenous structure; SCARA2; Scavenger receptor class A member 2.   |
| <b>Organism Species:</b>      | Rabbit  |
| <b>Clonality:</b>             | Polyclonal  |
| <b>React Species:</b>         | Human,Mouse,Rat,Chicken,Dog,Guinea Pig,   |
| <b>Applications:</b>          | WB=1:500-2000ELISA=1:500-1000IHC-P=1:400-800IHC-F=1:400-800IF=1:100-500 (Paraffin sections need antigen repair)<br>not yet tested in other applications.<br>optimal dilutions/concentrations should be determined by the end user.  |
| <b>Molecular weight:</b>      | 53kDa   |
| <b>Cellular localization:</b> | The cell membrane   |
| <b>Form:</b>                  | Lyophilized or Liquid   |
| <b>Concentration:</b>         | 1mg/ml  |
| <b>immunogen:</b>             | KLH conjugated synthetic peptide derived from human MARCO:421-520/520<Extracellular>  |
| <b>Lsotype:</b>               | IgG   |
| <b>Purification:</b>          | affinity purified by Protein A  |
| <b>Storage Buffer:</b>        | 0.01M TBS(pH7.4) with 1% BSA, 0.03% Proclin300 and 50% Glycerol.  |
| <b>Storage:</b>               | Store at -20 °C for one year. Avoid repeated freeze/thaw cycles. The lyophilized antibody is stable at room temperature for at least one month and for greater than a year when kept at -20°C. When reconstituted in sterile pH 7.4 0.01M PBS or diluent of antibody the antibody is stable for at least two weeks at 2-4 °C.   |
| <b>PubMed:</b>                | <a href="#">PubMed</a>  |
| <b>Product Detail:</b>        | The protein encoded by this gene is a member of the class A scavenger receptor family and is part of the innate antimicrobial immune system. The protein may bind both Gram-negative and Gram-positive bacteria via an extracellular, C-terminal, scavenger receptor cysteine-rich (SRCR) domain. In addition to short cytoplasmic and transmembrane domains, there is an extracellular spacer domain and a long, extracellular collagenous |

domain. The protein may form a trimeric molecule by the association of the collagenous domains of three identical polypeptide chains. [provided by RefSeq].

**Function:**

Pattern recognition receptor (PRR). Binds Gram-positive and Gram-negative bacteria.

**Subunit:**

Homotrimer. Trimers may assemble in larger oligomers thus resulting in the creation of a large surface capable of interacting with very large ligands.

**Subcellular Location:**

Membrane; Single-pass type II membrane protein.

**Similarity:**

Contains 1 collagen-like domain.

Contains 1 SRCR domain.

**SWISS:**

Q60754

**Gene ID:**

8685

**Database links:**

[Entrez Gene: 8685](#)Human

[Omim: 604870](#)Human

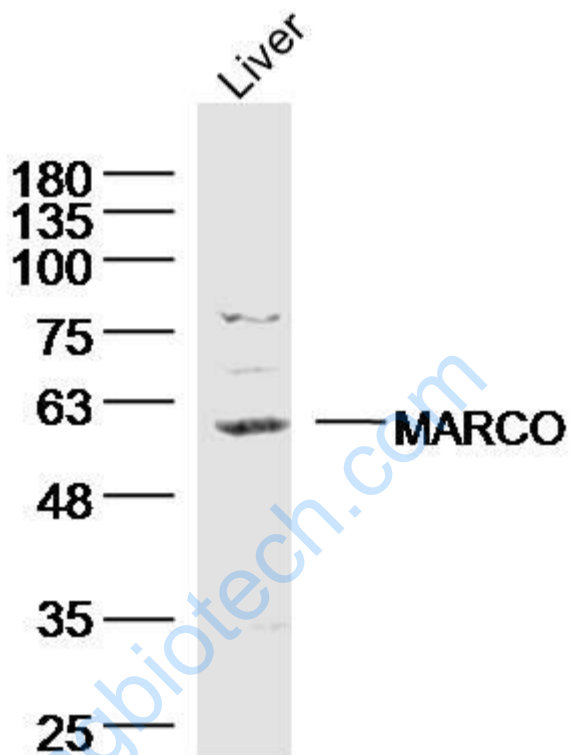
[SwissProt: Q9UEW3](#)Human

[Unigene: 67226](#)Human

**Important Note:**

This product as supplied is intended for research use only, not for use in human, therapeutic or diagnostic applications.

Picture:



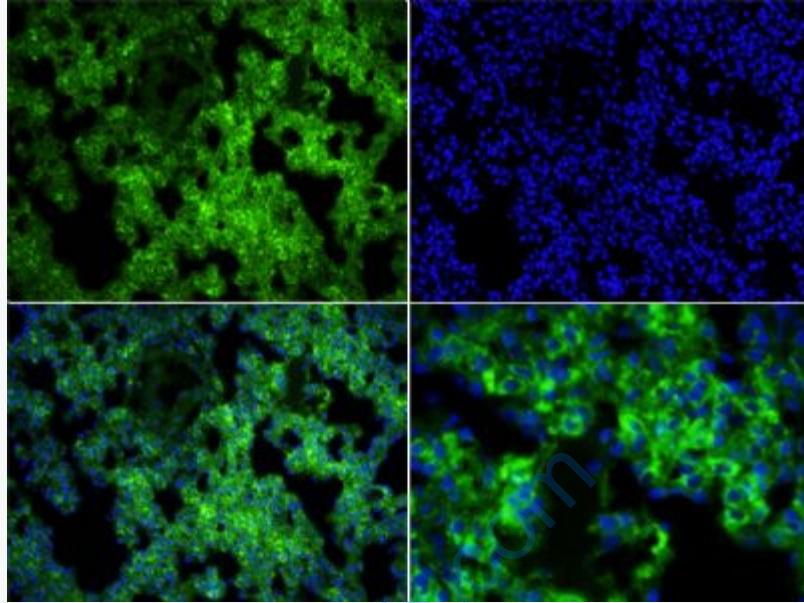
Sample: liver (mouse) Lysate at 40 ug

Primary: Anti- MARCO (SL2659R) at 1/300 dilution

Secondary: IRDye800CW Goat Anti-Rabbit IgG at 1/20000 dilution

Predicted band size: 53kD

Observed band size: 58 kD



Tissue/cell: mouse lung tissue;4% Paraformaldehyde-fixed and paraffin-embedded;

Antigen retrieval: citrate buffer ( 0.01M, pH 6.0 ), Boiling bathing for 15min;

Blocking buffer (normal goat serum,C-0005) at 37°C for 20 min;

Incubation: Anti-MARCO Polyclonal Antibody, Unconjugated(SL2659R) 1:100,  
overnight at 4°C; DAPI(5ug/ml,blue,C-0033) was used to stain the cell nuclei