



Rabbit Anti-MD1 antibody

SL2661R

Product Name:	MD1
Chinese Name:	MD-1蛋白抗体
Alias:	BPAD; dJ80N2.1; LY86; LY-86; LY 86; Lymphocyte antigen 86; Lymphocyte antigen 86 precursor; Major affective disorder 1; MD-1; MD1; MD 1; MD1 protein; MD1 RP105 associated; MD1 RP105 associated; MMD-1; RP1-80N2.1.
Organism Species:	Rabbit
Clonality:	Polyclonal
React Species:	Human,Mouse,Rat,Dog,Pig,Cow,Rabbit,
Applications:	ELISA=1:500-1000IHC-P=1:400-800IHC-F=1:400-800IF=1:100-500 (Paraffin sections need antigen repair) not yet tested in other applications. optimal dilutions/concentrations should be determined by the end user.
Molecular weight:	16kDa
Cellular localization:	Secretory protein
Form:	Lyophilized or Liquid
Concentration:	1mg/ml
immunogen:	KLH conjugated synthetic peptide derived from human LY-86:65-162/162
Lsotype:	IgG
Purification:	affinity purified by Protein A
Storage Buffer:	0.01M TBS(pH7.4) with 1% BSA, 0.03% Proclin300 and 50% Glycerol.
Storage:	Store at -20 °C for one year. Avoid repeated freeze/thaw cycles. The lyophilized antibody is stable at room temperature for at least one month and for greater than a year when kept at -20°C. When reconstituted in sterile pH 7.4 0.01M PBS or diluent of antibody the antibody is stable for at least two weeks at 2-4 °C.
PubMed:	PubMed
Product Detail:	MD1 is a 28 kDa molecule that is associated at the cell surface with RP105 (CD180). RP105 is a leucine-rich repeat (LRR) molecule that is expressed on B lymphocytes. It was first identified by a mAb that protects spleen B cells from irradiation-induced apoptosis. LRR proteins, such as Toll receptors, have a role in innate immunity. MD1 is primarily expressed by B cells, dendritic cells and monocytes, and promotes the

recognition of, and subsequent signaling by LPS in the innate immune system. MD1 does not have any homology to other molecules. MD1 when expressed alone behaves as a secretory protein. Expression of MD1 in a cell increases the expression of RP105.

Function:

May cooperate with CD180 and TLR4 to mediate the innate immune response to bacterial lipopolysaccharide (LPS) and cytokine production. Important for efficient CD180 cell surface expression.

Subcellular Location:

Secreted. extracellular space. Associated with CD180 at the cell surface.

Tissue Specificity:

Highly expressed in B-cells, monocytes and tonsil.

SWISS:

O95711

Gene ID:

9450

Database links:

[Entrez Gene: 9450](#) Human

[Entrez Gene: 17084](#) Mouse

[Entrez Gene: 396639](#) Pig

[Entrez Gene: 291359](#) Rat

[Omim: 605241](#) Human

[SwissProt: O95711](#) Human

[SwissProt: O88188](#) Mouse

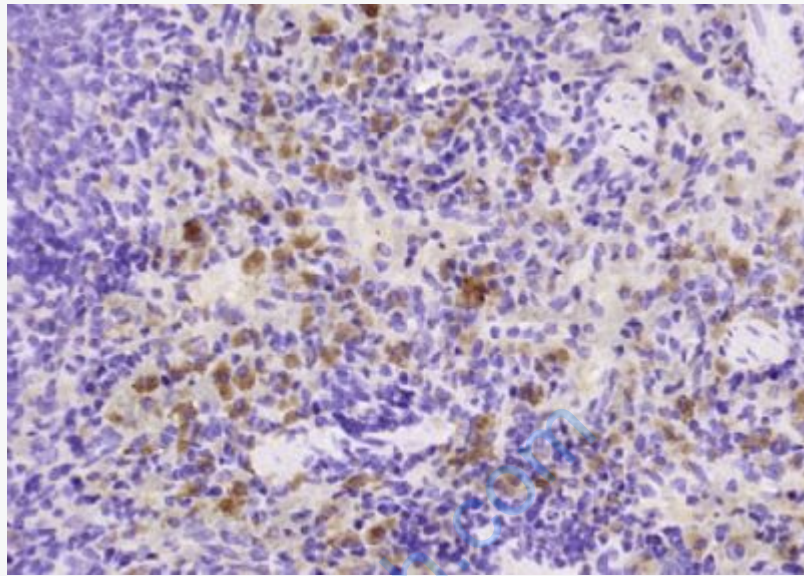
[Unigene: 653138](#) Human

[Unigene: 2639](#) Mouse

[Unigene: 3176](#) Rat

Important Note:

This product as supplied is intended for research use only, not for use in human, therapeutic or diagnostic applications.



Picture:

Paraformaldehyde-fixed, paraffin embedded (rat spleen); Antigen retrieval by boiling in sodium citrate buffer (pH6.0) for 15min; Block endogenous peroxidase by 3% hydrogen peroxide for 20 minutes; Blocking buffer (normal goat serum) at 37°C for 30min; Antibody incubation with (MD1) Polyclonal Antibody, Unconjugated (SL2661R) at 1:200 overnight at 4°C, followed by operating according to SP Kit(Rabbit) (sp-0023) instructions and DAB staining.