



Rabbit Anti-CLEC5A antibody

SL2663R

Product Name:	CLEC5A
Chinese Name:	C型凝集素结构域家族5成员A抗体
Alias:	A1 catalytic; A2 catalytic; Alkali myosin light chain 1; Alkali myosin light chain 3; C36E6.3; CMH10; DKFZp779C0562; KMLC; MLC 2; MLC 2v; MLC; MLC1F; MLC2; MLC3F; C-type lectin domain family 5 member A; C type lectin domain family 5 member A; C-type lectin superfamily member 5; CLEC5 A; CLEC5A; CLECSF 5; CLECSF5; MDL 1; MDL-1; MDL1; CLC5A_MOUSE; Myeloid DAP12-associating lectin 1; Myeloid DAP12 associating lectin.
Organism Species:	Rabbit
Clonality:	Polyclonal
React Species:	Human,Mouse,Rat,Pig,Cow,Horse,Rabbit,
Applications:	WB=1:500-2000ELISA=1:500-1000IHC-P=1:400-800IHC-F=1:400-800ICC=1:100-500IF=1:100-500 (Paraffin sections need antigen repair) not yet tested in other applications. optimal dilutions/concentrations should be determined by the end user.
Molecular weight:	22kDa
Cellular localization:	The cell membrane
Form:	Lyophilized or Liquid
Concentration:	1mg/ml
immunogen:	KLH conjugated synthetic peptide derived from mouse CLEC5A:101-190/190<Extracellular>
Lsotype:	IgG
Purification:	affinity purified by Protein A
Storage Buffer:	0.01M TBS(pH7.4) with 1% BSA, 0.03% Proclin300 and 50% Glycerol.
Storage:	Store at -20 °C for one year. Avoid repeated freeze/thaw cycles. The lyophilized antibody is stable at room temperature for at least one month and for greater than a year when kept at -20°C. When reconstituted in sterile pH 7.4 0.01M PBS or diluent of antibody the antibody is stable for at least two weeks at 2-4 °C.
PubMed:	PubMed
Product Detail:	This gene encodes a member of the C-type lectin/C-type lectin-like domain

(CTL/CTLD) superfamily. Members of this family share a common protein fold and have diverse functions, such as cell adhesion, cell-cell signalling, glycoprotein turnover, and roles in inflammation and immune response. The encoded type II transmembrane protein interacts with dnax-activation protein 12 and may play a role in cell activation. Alternative splice variants have been described but their full-length sequence has not been determined. [provided by RefSeq].

Function:

Functions as a positive regulator of osteoclastogenesis. Cell surface receptor that signals via TYROBP. Regulates inflammatory responses. Acts as a key regulator of synovial injury and bone erosion during autoimmune joint inflammation. Critical macrophage receptor for dengue virus serotypes 1-4. The binding of dengue virus to CLEC5A triggers signaling through phosphorylation of TYROBP, this interaction does not result in viral entry but stimulates proinflammatory cytokine release.

Subunit:

Monomer. Homodimer. The majority of CLEC5A is expressed as a monomeric form on macrophages. Interacts with TYROBP/DAP12. The interaction with TYROBP is required for CLEC5 cell surface expression. Interacts with HCST/DAP10. Forms an CLEC5A/TYROBP/HCST trimolecular complex depending almost solely on TYROBP.

Subcellular Location:

Cell membrane; Single-pass type II membrane protein.

Tissue Specificity:

Expressed in peripheral blood monocytes and in the monocyte/macrophage cell lines U937 and MonoMac6, but not in cell lines of other origins. Expression is down-regulated when monocytes differentiate into dendritic cells.

Post-translational modifications:

N-glycosylated. Contains sialic acid residues.

DISEASE:

Note=Involved in the pathogenetic mechanisms of Japanese encephalitis virus (JEV) infection of the brain. JEV infection of young mice results in increased expression of CLEC5A in spleen and brain with consequent activation of proinflammatory cytokines secretion.

Similarity:

Contains 1 C-type lectin domain.

SWISS:

Q9R007

Gene ID:

23845

Database links:

[Entrez Gene: 23601](#)Human

[Entrez Gene: 23845](#)Mouse

[Entrez Gene: 679787](#)Rat

[Omim: 604987](#)Human

[SwissProt: Q9NY25](#)Human

[SwissProt: Q9R007](#)Mouse

[Unigene: 446235](#)Human

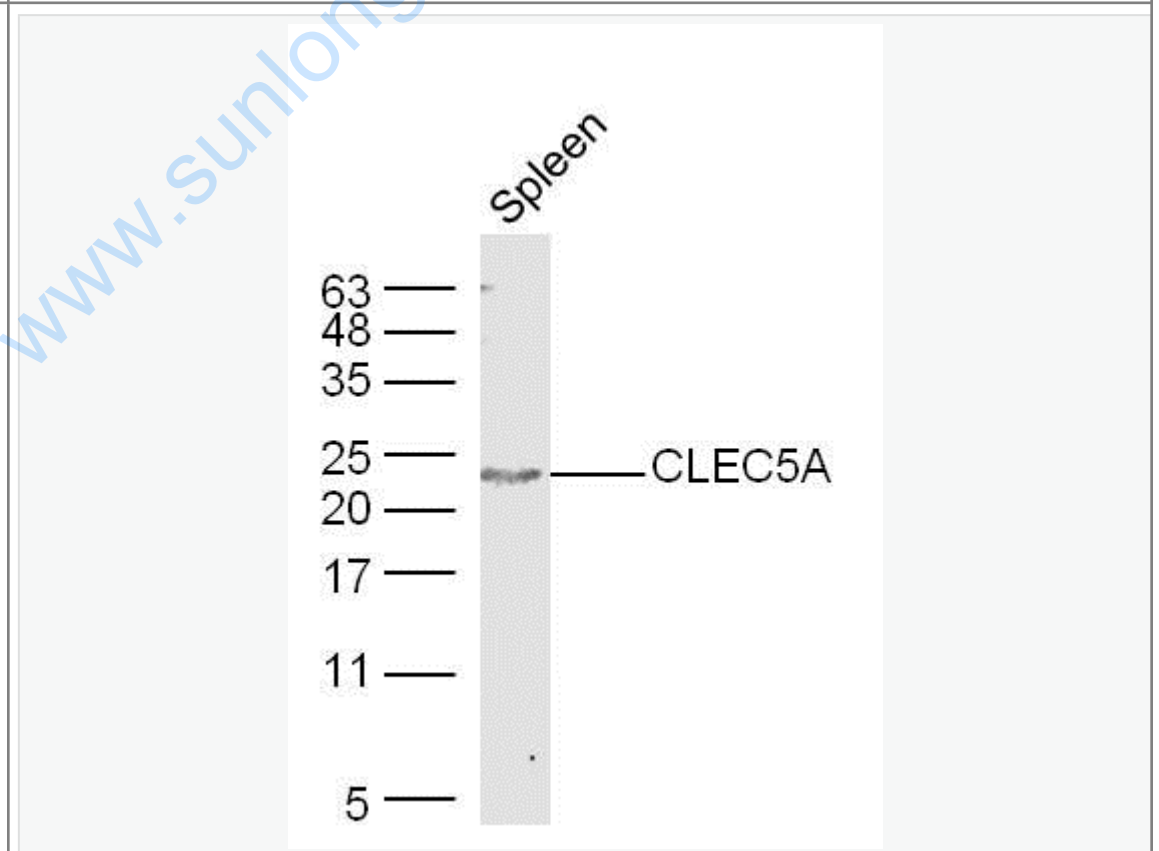
[Unigene: 103765](#)Mouse

[Unigene: 218435](#)Rat

Important Note:

This product as supplied is intended for research use only, not for use in human, therapeutic or diagnostic applications.

Picture:



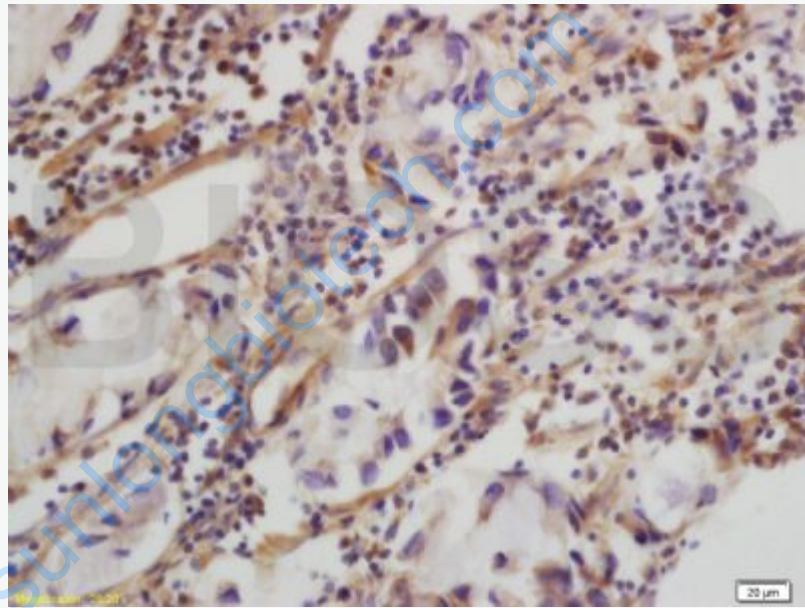
Sample: Spleen (Mouse) Lysate at 40 ug

Primary: Anti-CLEC5A(SL2663R) at 1/300 dilution

Secondary: IRDye800CW Goat Anti-Rabbit IgG at 1/20000 dilution

Predicted band size: 22 kD

Observed band size: 22 kD

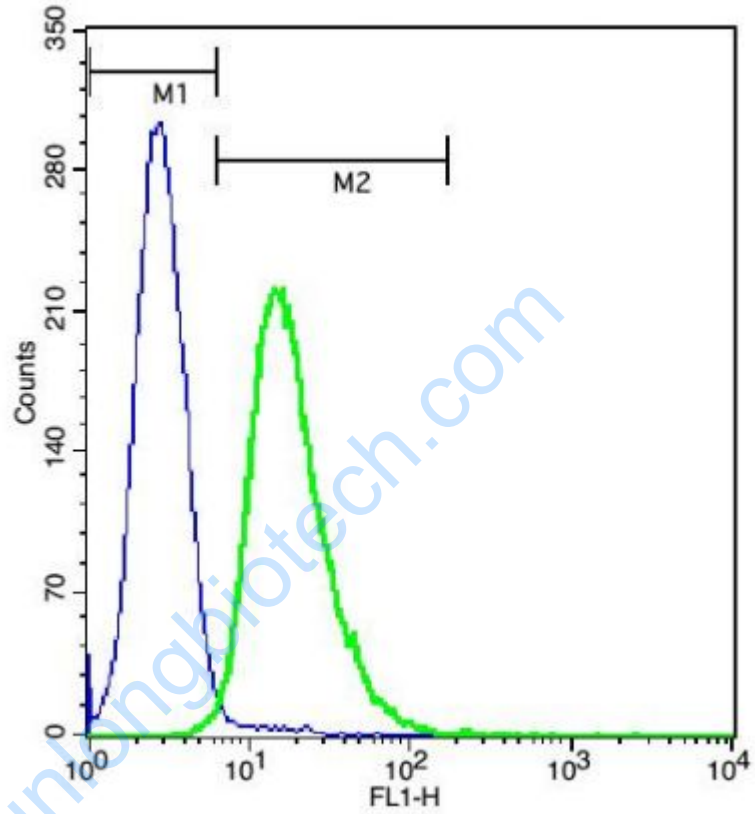


Tissue/cell: human colon carcinoma; 4% Paraformaldehyde-fixed and paraffin-embedded;

Antigen retrieval: citrate buffer (0.01M, pH 6.0), Boiling bathing for 15min; Block endogenous peroxidase by 3% Hydrogen peroxide for 30min; Blocking buffer (normal goat serum,C-0005) at 37°C for 20 min;

Incubation: Anti-CLEC5A/MDL1 Polyclonal Antibody, Unconjugated(SL2663R) 1:200, overnight at 4°C, followed by conjugation to the secondary antibody(SP-

0023) and DAB(C-0010) staining



Cell: U937.

Concentration: 1:100.

Incubation: 40 minutes, room temperature.

Host/Blank: U937 cells.

Flow cytometric analysis of Rabbit Anti-CLEC5A antibody (SL2663R) (green) compared with control in the absence of primary antibody (blue) followed by U937 cells.

secondary antibody: Goat Anti-rabbit IgG/FITC antibody (SL2663R)

