



Rabbit Anti-SLAMF6/LY108 antibody

SL2682R

Product Name:	SLAMF6/LY108
Chinese Name:	SLAMF6抗体
Alias:	LY108; Activating NK receptor; KALI; KALiB; MGC104953; NK T B antigen; NTB A; NTBA; SF2000; SLAM family member 6; SLAM family member 6 precursor; SLAMF6; SLAF6_HUMAN; NK-T-B-antigen; NTB-A; CD352.
Organism Species:	Rabbit
Clonality:	Polyclonal
React Species:	Mouse,Rat,
Applications:	WB=1:500-2000ELISA=1:500-1000 not yet tested in other applications. optimal dilutions/concentrations should be determined by the end user.
Molecular weight:	37kDa
Cellular localization:	The cell membrane
Form:	Lyophilized or Liquid
Concentration:	1mg/ml
immunogen:	KLH conjugated synthetic peptide derived from mouse SLAMF6:51-150/331
Lsotype:	IgG
Purification:	affinity purified by Protein A
Storage Buffer:	0.01M TBS(pH7.4) with 1% BSA, 0.03% Proclin300 and 50% Glycerol.
Storage:	Store at -20 °C for one year. Avoid repeated freeze/thaw cycles. The lyophilized antibody is stable at room temperature for at least one month and for greater than a year when kept at -20°C. When reconstituted in sterile pH 7.4 0.01M PBS or diluent of antibody the antibody is stable for at least two weeks at 2-4 °C.
PubMed:	PubMed
Product Detail:	SLAMF6 is a type I transmembrane protein, belonging to the CD2 subfamily of the immunoglobulin superfamily. SLAMF6 is expressed on Natural killer (NK), T, and B lymphocytes. It undergoes tyrosine phosphorylation and associates with the Src homology 2 domain-containing protein (SH2D1A) as well as with SH2 domain-containing phosphatases (SHPs). It may function as a coreceptor in the process of NK cell activation. It can also mediate inhibitory signals in NK cells from X-linked

lymphoproliferative patients. It may play a role in the regulation of autoimmune diseases.

Function:

Triggers cytolytic activity only in natural killer cells (NK) expressing high surface densities of natural cytotoxicity receptors.

Subunit:

Homodimer. Interacts with PTN6 and, upon phosphorylation, with PTN11 and SH2D1A/SAP.

Subcellular Location:

Cell membrane; Single-pass type I membrane protein (Probable).

Tissue Specificity:

Expressed by all (resting and activated) natural killer cells (NK), T- and B-lymphocytes.

Similarity:

Contains 1 Ig-like (immunoglobulin-like) domain.

SWISS:

Q9ET39

Gene ID:

30925

Database links:

[Entrez Gene: 114836](#)Human

[Entrez Gene: 30925](#)Mouse

[Omim: 606446](#)Human

[SwissProt: Q96DU3](#)Human

[SwissProt: Q9ET39](#)Mouse

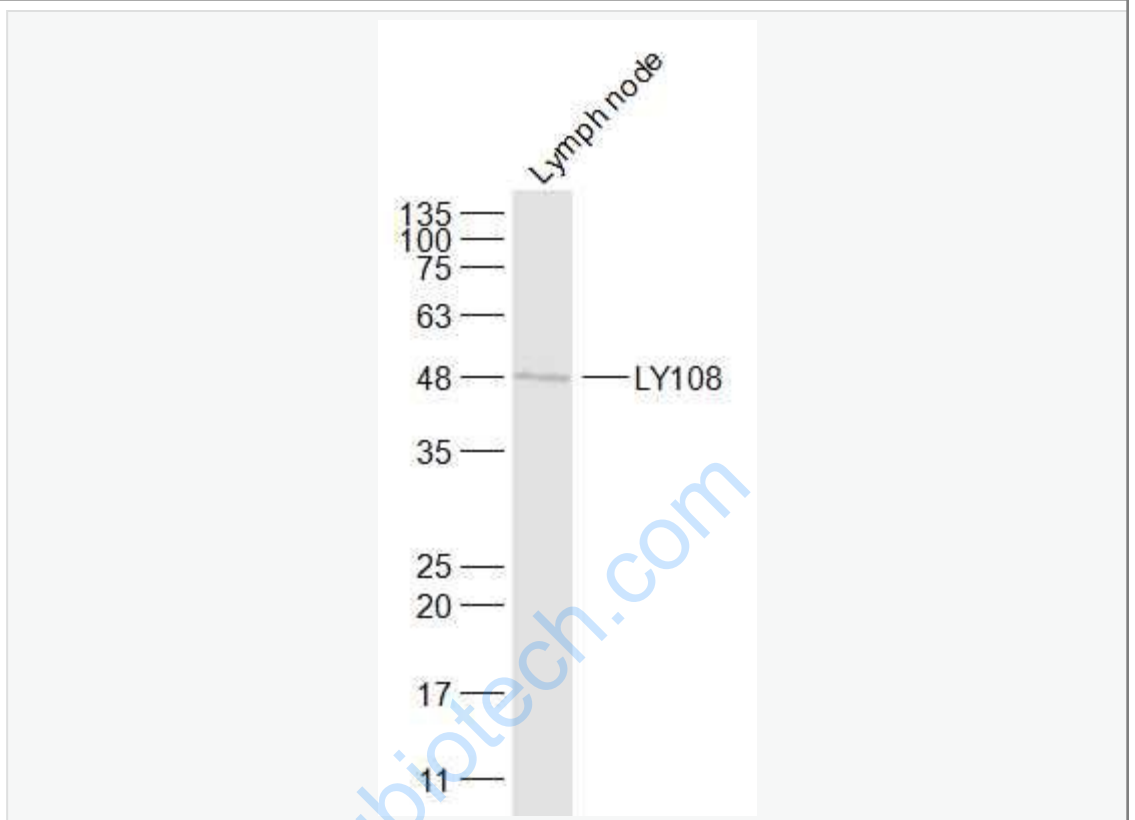
[Unigene: 492348](#)Human

[Unigene: 486404](#)Mouse

Important Note:

This product as supplied is intended for research use only, not for use in human, therapeutic or diagnostic applications.

Picture:



Sample:

Lymph node (Mouse) Lysate at 40 ug

Primary: Anti-LY108 (SL2682R) at 1/1000 dilution

Secondary: IRDye800CW Goat Anti-Rabbit IgG at 1/20000 dilution

Predicted band size: 37 kD

Observed band size: 48 kD