



## Rabbit Anti-CLEC2D antibody

SL2683R

|                               |   |
|-------------------------------|---|
| <b>Product Name:</b>          | CLEC2D  |
| <b>Chinese Name:</b>          | CLEC2D蛋白抗体  |
| <b>Alias:</b>                 | C-type lectin domain family 2 member D; C type lectin domain family 2 member D isoform 5; CLAX; LLT1; OCIL; Lectin like NK cell receptor; Lectin like transcript 1; Osteoclast inhibitory lectin; CLC2D_HUMAN; CLEC2D; CLEC2D protein; Lectin-like NK cell receptor; Lectin-like transcript 1; LLT-1; Osteoclast inhibitory lectin. |
| <b>Organism Species:</b>      | Rabbit  |
| <b>Clonality:</b>             | Polyclonal  |
| <b>React Species:</b>         | Human,Mouse,Rat,Dog,Pig,Horse,Rabbit,   |
| <b>Applications:</b>          | ELISA=1:500-1000IHC-P=1:400-800IHC-F=1:400-800Flow-Cyt=1μg /testIF=1:100-500 (Paraffin sections need antigen repair)<br>not yet tested in other applications.<br>optimal dilutions/concentrations should be determined by the end user.   |
| <b>Molecular weight:</b>      | 10kDa   |
| <b>Cellular localization:</b> | The cell membraneExtracellular matrix   |
| <b>Form:</b>                  | Lyophilized or Liquid   |
| <b>Concentration:</b>         | 1mg/ml  |
| <b>immunogen:</b>             | KLH conjugated synthetic peptide derived from human CLEC2D:101-207/207<Extracellular>   |
| <b>Lsotype:</b>               | IgG   |
| <b>Purification:</b>          | affinity purified by Protein A  |
| <b>Storage Buffer:</b>        | 0.01M TBS(pH7.4) with 1% BSA, 0.03% Proclin300 and 50% Glycerol.  |
| <b>Storage:</b>               | Store at -20 °C for one year. Avoid repeated freeze/thaw cycles. The lyophilized antibody is stable at room temperature for at least one month and for greater than a year when kept at -20°C. When reconstituted in sterile pH 7.4 0.01M PBS or diluent of antibody the antibody is stable for at least two weeks at 2-4 °C.       |
| <b>PubMed:</b>                | <a href="#">PubMed</a>  |
| <b>Product Detail:</b>        | This gene encodes a member of the natural killer cell receptor C-type lectin family. The encoded protein inhibits osteoclast formation and contains a transmembrane domain near the N-terminus as well as the C-type lectin-like extracellular domain. Several  |

alternatively spliced transcript variants have been identified, but the full-length nature of every transcript has not been defined.

**Function:**

Receptor for KLRB1 that protects target cells against natural killer cell-mediated lysis. Inhibits osteoclast formation. Inhibits bone resorption. Modulates the release of interferon-gamma. Binds high molecular weight sulfated glycosaminoglycans.

**Subunit:**

Homodimer or heterodimer; disulfide-linked.

**Subcellular Location:**

Cell membrane; Single-pass type II membrane protein. Cell surface.  
Isoform 2, 4: Endoplasmic reticulum.

**Tissue Specificity:**

Detected in fetal heart, brain, lung, chondrocytes, perichondrium and osteoblasts, and in adult splenocytes, thymocytes, lymph-node cells, osteoblasts, growth plate chondrocytes and skeletal muscle overlying the bone (at protein level). Ubiquitous. Detected in thymus, bone marrow, lung, gut, heart, skeletal muscle, ovary, spleen, ileum, liver and kidney.

**Similarity:**

Contains 1 C-type lectin domain.

**SWISS:**

Q9UHP7

**Gene ID:**

29121

**Database links:**

[Entrez Gene: 29121](#)Human

[Entrez Gene: 93694](#)Mouse

[Entrez Gene: 113937](#)Rat

[Omim: 605659](#)Human

[SwissProt: Q9UHP7](#)Human

[SwissProt: Q91V08](#)Mouse

[SwissProt: Q925N7](#)Rat

[Unigene: 268326](#)Human

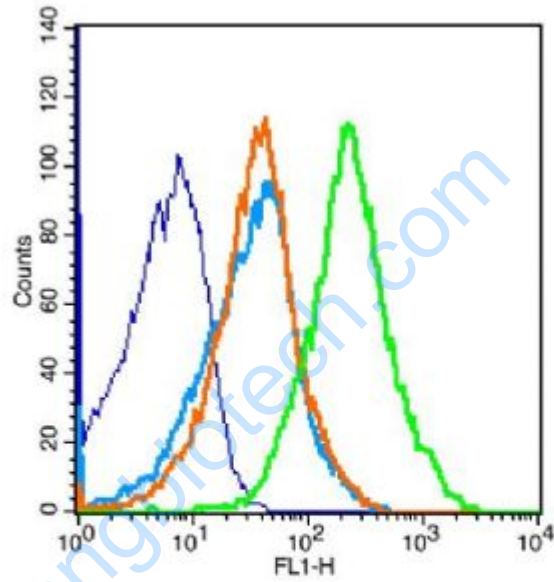
[Unigene: 197536](#)Mouse

[Unigene: 22573Rat](#)

**Important Note:**

This product as supplied is intended for research use only, not for use in human, therapeutic or diagnostic applications.

Picture:

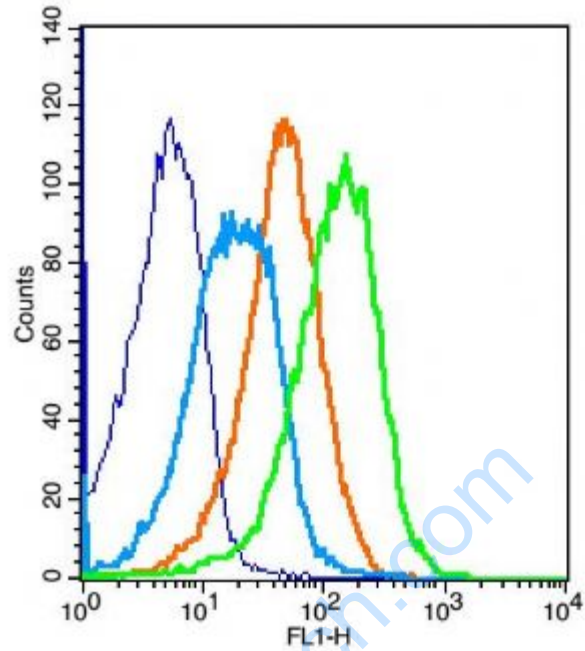


| Key | Name                            | Parameter | Gate |
|-----|---------------------------------|-----------|------|
| —   | (mo)Thymocyte-blank.039         | FL1-H     | G1   |
| —   | bs-0295G-FITC-(mo)Th#1E6233.040 | FL1-H     | G1   |
| —   | bs-0295P-(FITC)-(mo)#1E6234.041 | FL1-H     | G1   |
| —   | bs-2683R-(FITC)-(mo)#1E623D.046 | FL1-H     | G1   |

Blank control: mouse thymocytes (blue)

Isotype Control Antibody: Rabbit IgG (orange); Secondary Antibody: Goat anti-rabbit IgG-FITC (white blue), Dilution: 1:100 in 1 X PBS containing 0.5% BSA;

Primary Antibody Dilution: 1 µl in 100 µL 1X PBS containing 0.5% BSA (green).



| Key | Name                            | Parameter | Gate |
|-----|---------------------------------|-----------|------|
| —   | (mo)Splenocyte-blank.049        | FL1-H     | G1   |
| —   | bs-0295P(CST)-(FITC)#1E624C.051 | FL1-H     | G1   |
| —   | bs-0295G-FITC(CST)-(#1E624A.050 | FL1-H     | G1   |
| —   | bs-2683R-(FITC)-(mo)Sple-1.070  | FL1-H     | G1   |

Positive control: (mo)Splenocytes(2% Paraformaldehyde-fixed )

Isotype Control Antibody: Rabbit IgG; Dilution: 1 $\mu$ g in 100  $\mu$ l 1 X PBS containing 0.5% BSA

Secondary Antibody: Goat anti-rabbit IgG-FITC; Dilution: 1:200 in 1 X PBS containing 0.5% BSA

Primary Antibody catalog number: bs-2683R; Dilution: 1 $\mu$ g in 100  $\mu$ l 1X PBS containing 0.5% BSA