



## Rabbit Anti-TREM2 antibody

SL2723R

<b>Product Name:</b>	TREM2
<b>Chinese Name:</b>	髓系细胞触发受体2抗体
<b>Alias:</b>	TREM-2; TREM2a; TREM2b; TREM2c; Trggering receptor expressed on myeloid cells 2; Trggering receptor expressed on myeloid cells 2a; Triggering receptor expressed on monocytes 2; TREM2 HUMAN.
<b>文献引用</b> <b>PubMed</b> :	<p><b>Specific References(1)</b> SL2723R has been referenced in 1 publications.</p> <p><b>[IF=4.39]</b>Satoh, Jun-ichi, et al. "A survey of TREM2 antibodies reveals neuronal but not microglial staining in formalin-fixed paraffin-embedded postmortem Alzheimer's brain tissues." Alzheimer's research &amp; therapy 5.4 (2013): 30.<b>WB;Human.</b></p> <p style="text-align: right;"><b>PubMed:23830013</b></p>
<b>Organism Species:</b>	Rabbit
<b>Clonality:</b>	Polyclonal
<b>React Species:</b>	Human,Mouse,Rat,Dog,Pig,Cow,Horse,
<b>Applications:</b>	WB=1:500-2000ELISA=1:500-1000IHC-P=1:400-800IHC-F=1:400-800ICC=1:100-500IF=1:100-500 (Paraffin sections need antigen repair) not yet tested in other applications. optimal dilutions/concentrations should be determined by the end user.
<b>Molecular weight:</b>	25kDa
<b>Cellular localization:</b>	The cell membraneSecretory protein
<b>Form:</b>	Lyophilized or Liquid
<b>Concentration:</b>	1mg/ml
<b>immunogen:</b>	KLH conjugated synthetic peptide derived from human TREM2:1-100/230<Extracellular>
<b>Lsotype:</b>	IgG
<b>Purification:</b>	affinity purified by Protein A
<b>Storage Buffer:</b>	0.01M TBS(pH7.4) with 1% BSA, 0.03% Proclin300 and 50% Glycerol.
<b>Storage:</b>	Store at -20 °C for one year. Avoid repeated freeze/thaw cycles. The lyophilized

	antibody is stable at room temperature for at least one month and for greater than a year when kept at -20°C. When reconstituted in sterile pH 7.4 0.01M PBS or diluent of antibody the antibody is stable for at least two weeks at 2-4 °C.
<b>PubMed:</b>	<a href="#">PubMed</a>
<b>Product Detail:</b>	<p>This gene encodes a membrane protein that forms a receptor signaling complex with the TYRO protein tyrosine kinase binding protein. The encoded protein functions in immune response and may be involved in chronic inflammation by triggering the production of constitutive inflammatory cytokines. Defects in this gene are a cause of polycystic lipomembranous osteodysplasia with sclerosing leukoencephalopathy (PLOSL). Alternative splicing results in multiple transcript variants encoding different isoforms. [provided by RefSeq, Nov 2012]</p> <p><b>Function:</b> May have a role in chronic inflammations and may stimulate production of constitutive rather than inflammatory chemokines and cytokines. Forms a receptor signaling complex with TYROBP and triggers activation of the immune responses in macrophages and dendritic cells.</p> <p><b>Subunit:</b> Interacts with TYROBP/DAP12.</p> <p><b>Subcellular Location:</b> Isoform 1: Cell membrane; Single-pass type I membrane protein (Potential). Isoform 2: Secreted (Potential). Isoform 3: Secreted (Potential).</p> <p><b>Tissue Specificity:</b> Expressed on macrophages and dendritic cells but not on granulocytes or monocytes. In the CNS strongest expression seen in the basal ganglia, corpus callosum, medulla oblongata and spinal cord.</p> <p><b>DISEASE:</b> Defects in TREM2 are a cause of polycystic lipomembranous osteodysplasia with sclerosing leukoencephalopathy (PLOSL) [MIM:221770]; also known as presenile dementia with bone cysts or Nasu-Hakola disease (NHD). PLOSL is a recessively inherited disease characterized by a combination of psychotic symptoms rapidly progressing to presenile dementia and bone cysts restricted to wrists and ankles. PLOSL has a global distribution, although most of the patients have been diagnosed in Finland and Japan, with an estimated population prevalence of 2x10(-6) in the Finns.</p> <p><b>Similarity:</b> Contains 1 Ig-like V-type (immunoglobulin-like) domain.</p> <p><b>SWISS:</b> Q9NZC2</p>

**Gene ID:**  
54209

**Database links:**

[Entrez Gene: 54209](#)Human

[Entrez Gene: 83433](#)Mouse

[Oimim: 605086](#)Human

[SwissProt: Q9NZC2](#)Human

[SwissProt: Q99NH8](#)Mouse

[Unigene: 435295](#)Human

[Unigene: 261623](#)Mouse

**Important Note:**

This product as supplied is intended for research use only, not for use in human, therapeutic or diagnostic applications.

**TREM-**

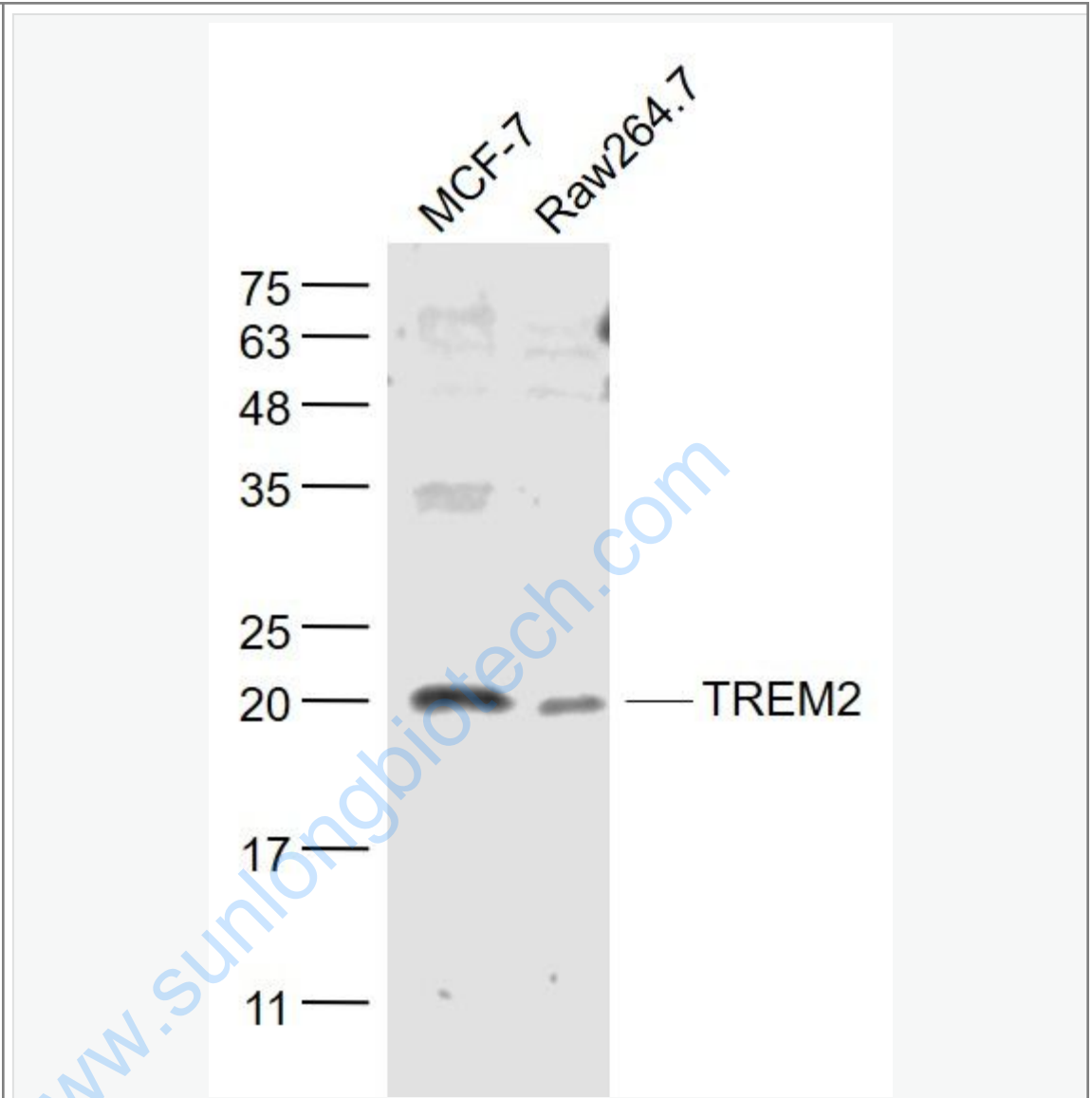
2是近年来发现应用于诊断炎症性疾病的重要标记物,也是感染性疾病的预警指标,与细菌感染的严重程度相关。

TREM2属于免疫球蛋白超家族TREM,表达于白细胞的The cell

membrane表面受体,TREM-

选择性地表达于中性粒细胞和部分单核细胞,它介导的信号传导通路在炎症的发生和级联放大中起重要作用。

Picture:



Sample:

MCF-7(Human) Cell Lysate at 30 ug

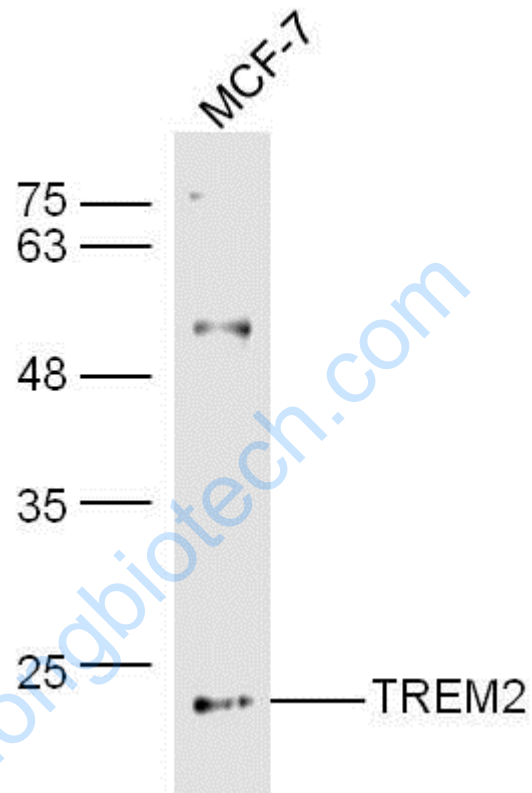
Raw264.7(Mouse) Cell Lysate at 30 ug

Primary: Anti- TREM2 (SL2723R) at 1/1000 dilution

Secondary: IRDye800CW Goat Anti-Rabbit IgG at 1/20000 dilution

Predicted band size: 23 kD

Observed band size: 20 kD



Sample:

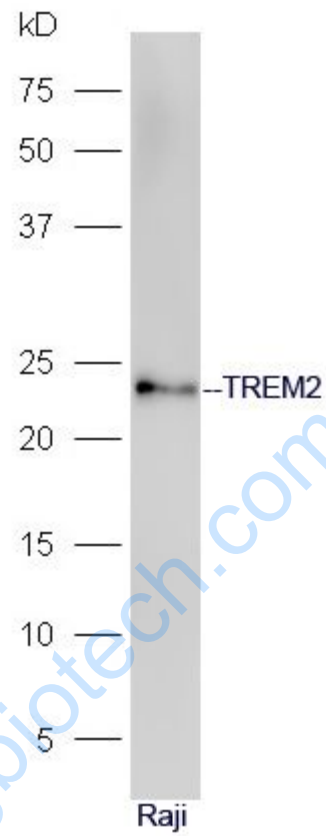
MCF-7 Cell (Human) Lysate at 30 ug

Primary: Anti-TREM2 (SL2723R) at 1/300 dilution

Secondary: IRDye800CW Goat Anti-Rabbit IgG at 1/20000 dilution

Predicted band size: 23 kD

Observed band size: 23 kD



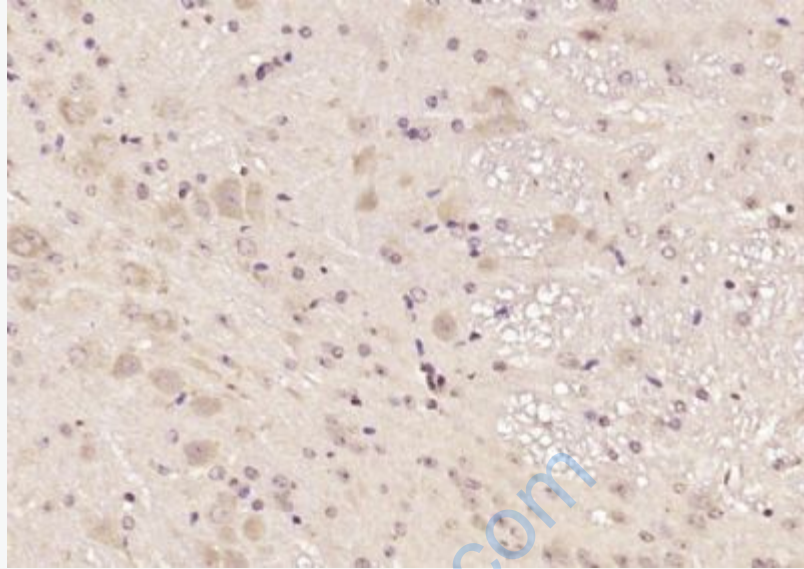
Sample: Raji Cell lysate at 30ug;

Primary: Anti-TREM2(SL2723R) at 1:300 dilution;

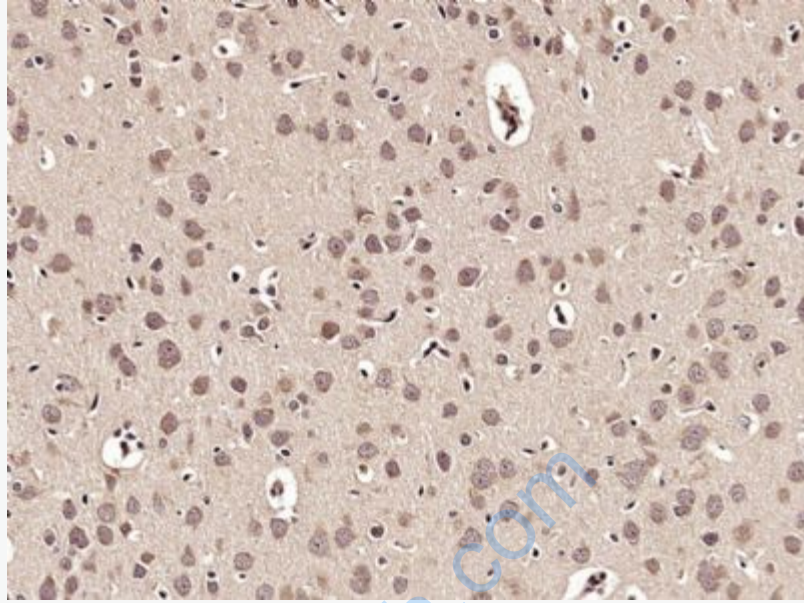
Secondary: HRP conjugated Goat-Anti-rabbit IgG(SL2723R) at 1: 5000 dilution;

Predicted band size: 23 kD

Observed band size: 23 kD



Paraformaldehyde-fixed, paraffin embedded (mouse brain); Antigen retrieval by boiling in sodium citrate buffer (pH6.0) for 15min; Block endogenous peroxidase by 3% hydrogen peroxide for 20 minutes; Blocking buffer (normal goat serum) at 37°C for 30min; Antibody incubation with (TREM2) Polyclonal Antibody, Unconjugated (SL2723R) at 1:200 overnight at 4°C, followed by operating according to SP Kit(Rabbit) (sp-0023) instructions and DAB staining.



Paraformaldehyde-fixed, paraffin embedded (Rat brain); Antigen retrieval by microwave in sodium citrate buffer (pH6.0) ; Block endogenous peroxidase by 3% hydrogen peroxide for 30 minutes; Blocking buffer (3% BSA) at RT for 30min; Antibody incubation with (TREM2) Polyclonal Antibody, Unconjugated (SL2723R) at 1:400 overnight at 4°C, followed by conjugation to the secondary antibody (labeled with HRP) and DAB staining.