



Rabbit Anti-TREML1 antibody

SL2724R

Product Name:	TREML1
Chinese Name:	髓系细胞触发受体样转录因子1抗体
Alias:	dJ238O23.3; GLTL1825; MGC119173; PRO3438; TLT 1; TLT1; TREM like transcript 1; Trem like transcript 1 protein; TREML 1; Triggering receptor expressed on myeloid cells like 1; Triggering receptor expressed on myeloid cells like protein 1.
Organism Species:	Rabbit
Clonality:	Polyclonal
React Species:	Human,Mouse,Rat,
Applications:	ELISA=1:500-1000IHC-P=1:400-800IHC-F=1:400-800IF=1:100-500 (Paraffin sections need antigen repair) not yet tested in other applications. optimal dilutions/concentrations should be determined by the end user.
Molecular weight:	33kDa
Cellular localization:	cytoplasmicThe cell membraneExtracellular matrix
Form:	Lyophilized or Liquid
Concentration:	1mg/ml
immunogen:	KLH conjugated synthetic peptide derived from human TREML1:201-311/311<Extracellular>
Lsotype:	IgG
Purification:	affinity purified by Protein A
Storage Buffer:	0.01M TBS(pH7.4) with 1% BSA, 0.03% Proclin300 and 50% Glycerol.
Storage:	Store at -20 °C for one year. Avoid repeated freeze/thaw cycles. The lyophilized antibody is stable at room temperature for at least one month and for greater than a year when kept at -20°C. When reconstituted in sterile pH 7.4 0.01M PBS or diluent of antibody the antibody is stable for at least two weeks at 2-4 °C.
PubMed:	PubMed
Product Detail:	This gene encodes a member of the triggering receptor expressed on myeloid cells-like (TREM) family. The encoded protein is a type 1 single Ig domain orphan receptor localized to the alpha-granule membranes of platelets. The encoded protein is involved in platelet aggregation, inflammation, and cellular activation and has been linked to Gray

platelet syndrome. Alternative splicing results in multiple transcript variants [provided by RefSeq, Nov 2012]

Subunit:

When phosphorylated, interacts with PTPN6. When phosphorylated, interacts with PTPN11.

Subcellular Location:

Cell membrane; Single-pass type I membrane protein. Cytoplasm. Note=Sequestered in cytoplasmic vesicles in resting platelets. Transported to the cell surface after stimulation by thrombin. Soluble fragments can be released into the serum by proteolysis.

Tissue Specificity:

Detected in platelets, monocytic leukemia and in T-cell leukemia.

Similarity:

Contains 1 Ig-like V-type (immunoglobulin-like) domain.

SWISS:

Q86YW5

Gene ID:

340205

Database links:

[Entrez Gene: 340205](#)Human

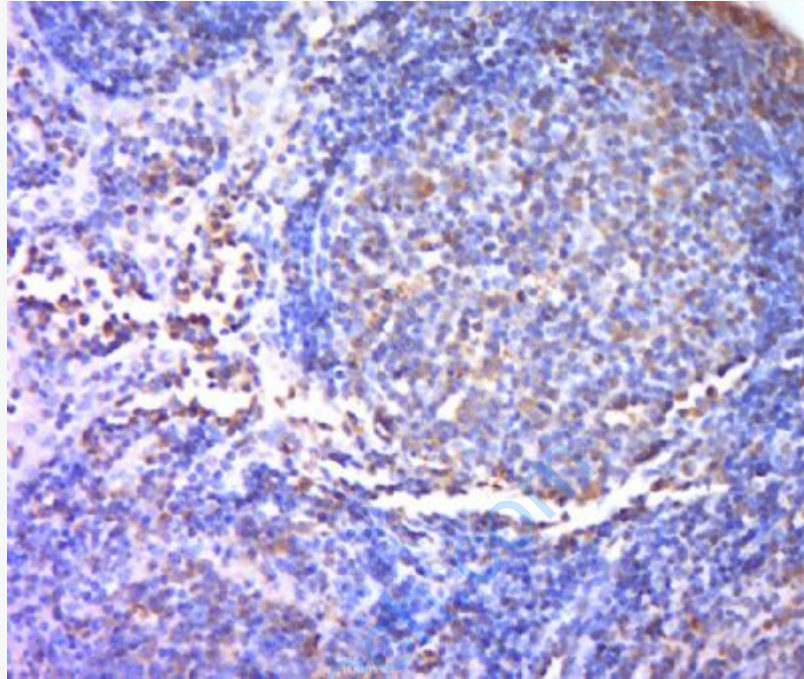
[Omim: 609714](#)Human

[SwissProt: Q86YW5](#)Human

[Unigene: 117331](#)Human

Important Note:

This product as supplied is intended for research use only, not for use in human, therapeutic or diagnostic applications.



Picture:

Paraformaldehyde-fixed, paraffin embedded (mouse lymphoid); Antigen retrieval by boiling in sodium citrate buffer (pH6.0) for 15min; Block endogenous peroxidase by 3% hydrogen peroxide for 20 minutes; Blocking buffer (normal goat serum) at 37°C for 30min; Antibody incubation with (TREML1) Polyclonal Antibody, Unconjugated (SL2724R) at 1:400 overnight at 4°C, followed by a conjugated secondary (sp-0023) for 20 minutes and DAB staining.