



## Rabbit Anti-EIF2AK4/GCN2 antibody

SL2768R

<b>Product Name:</b>	EIF2AK4/GCN2
<b>Chinese Name:</b>	蛋白激酶GCN2蛋白抗体
<b>Alias:</b>	EIF2AK4; Eukaryotic Translation Initiation Factor 2-alpha kinase 4; GCN2-like protein; KIAA1338; E2AK4_HUMAN; Eif2ak4; Eukaryotic Translation Initiation Factor 2 alpha kinase 4; GCN2; GCN2 eIF2alpha kinase; GCN2-like protein; MGCN2.
<b>Organism Species:</b>	Rabbit
<b>Clonality:</b>	Polyclonal
<b>React Species:</b>	Human,Mouse,Rat,Dog,Horse,Rabbit,
<b>Applications:</b>	ELISA=1:500-1000IHC-P=1:400-800IHC-F=1:400-800ICC=1:100-500IF=1:100-500 (Paraffin sections need antigen repair) not yet tested in other applications. optimal dilutions/concentrations should be determined by the end user.
<b>Molecular weight:</b>	189kDa
<b>Cellular localization:</b>	cytoplasmic
<b>Form:</b>	Lyophilized or Liquid
<b>Concentration:</b>	1mg/ml
<b>immunogen:</b>	KLH conjugated synthetic peptide derived from human GCN2:1401-1500/1649
<b>Lsotype:</b>	IgG
<b>Purification:</b>	affinity purified by Protein A
<b>Storage Buffer:</b>	0.01M TBS(pH7.4) with 1% BSA, 0.03% Proclin300 and 50% Glycerol.
<b>Storage:</b>	Store at -20 °C for one year. Avoid repeated freeze/thaw cycles. The lyophilized antibody is stable at room temperature for at least one month and for greater than a year when kept at -20°C. When reconstituted in sterile pH 7.4 0.01M PBS or diluent of antibody the antibody is stable for at least two weeks at 2-4 °C.
<b>PubMed:</b>	<a href="#">PubMed</a>
<b>Product Detail:</b>	GCN2 belongs to a family of kinases that phosphorylate the alpha subunit of eukaryotic translation initiation factor 2 to downregulate protein synthesis in response to varied cellular stresses.  <b>Function:</b>

Can phosphorylate the alpha subunit of EIF2 and may mediate translational control.

**Tissue Specificity:**

Widely expressed.

**Post-translational modifications:**

Autophosphorylated on threonine residues.

**Similarity:**

Belongs to the protein kinase superfamily. Ser/Thr protein kinase family. GCN2 subfamily.

Contains 2 protein kinase domains.

Contains 1 RWD domain.

**SWISS:**

Q9P2K8

**Gene ID:**

440275

**Database links:**

[Entrez Gene: 440275](#)Human

[Entrez Gene: 27103](#)Mouse

[Entrez Gene: 114859](#)Rat

[Omim: 609280](#)Human

[SwissProt: Q9P2K8](#)Human

[SwissProt: Q9QZ05](#)Mouse

[Unigene: 656673](#)Human

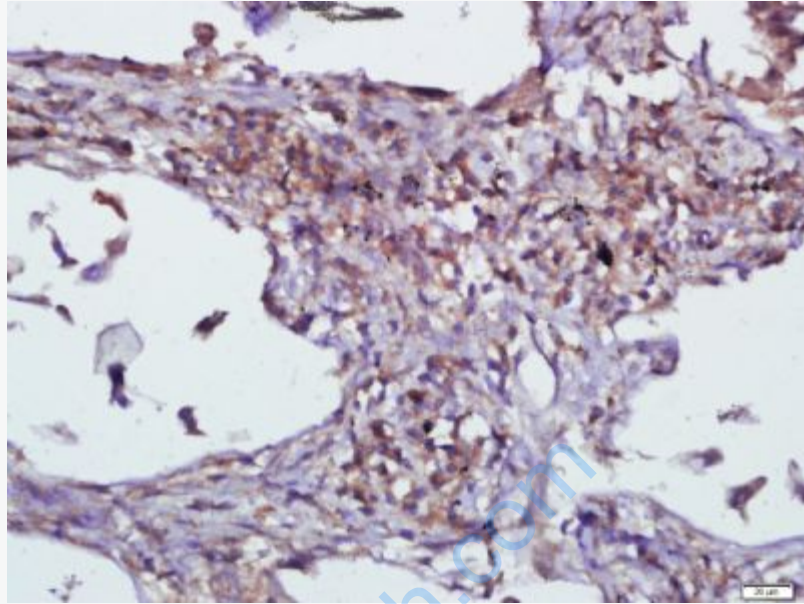
[Unigene: 217616](#)Mouse

[Unigene: 8333](#)Rat

**Important Note:**

This product as supplied is intended for research use only, not for use in human, therapeutic or diagnostic applications.

GCN2蛋白的作用;可能是将短期记忆变成长期记忆的一个主控调节因子, GCN2蛋白在长期记忆形成中功能的发现将可能帮助研究人员开发出提高记忆力丧失病人的记忆力的药物。



**Picture:**

Paraformaldehyde-fixed, paraffin embedded (human lung carcinoma); Antigen retrieval by boiling in sodium citrate buffer (pH6.0) for 15min; Block endogenous peroxidase by 3% hydrogen peroxide for 20 minutes; Blocking buffer (normal goat serum) at 37°C for 30min; Antibody incubation with (GCN2) Polyclonal Antibody, Unconjugated (SL2768R) at 1:500 overnight at 4°C, followed by a conjugated secondary (sp-0023) for 20 minutes and DAB staining.