



Rabbit Anti-KLF2 antibody

SL2772R

| | |
|-------------------------------|---|
| Product Name: | KLF2 |
| Chinese Name: | 肺Kruppel样因子抗体 |
| Alias: | Kruppel like factor 2; Kruppel like factor; Kruppel like factor LKLF; Kruppel-like factor 2 (lung); Lung krueppel like factor; Lung Kruppel like zinc finger transcription factor; KLF 2; Klf2; KLF2_HUMAN; Krueppel-like factor 2; Lklf; Lung krueppel like factor; Lung krueppel-like factor; Lung Kruppel like zinc finger transcription factor. |
| 文献引用 PubMed : | <p>Specific References(2) SL2772R has been referenced in 2 publications.</p> <p>[IF=2.99]Wang, Y. L., et al. "Effects of Artesunate and Ursolic Acid on Hyperlipidemia and its Complications in Rabbit."?European Journal of Pharmaceutical Sciences?(2013).WB;Rabbit. PubMed:23954455</p> <p>[IF=3.53]Zhang P, Ha T, Larouche M, Swanson D, Goldowitz D (2015) Kruppel-Like Factor 4 Regulates Granule Cell Pax6 Expression and Cell Proliferation in Early Cerebellar Development. PLoS ONE 10(7): e0134390.IHC-F;Mouse. PubMed:26226504</p> |
| Organism Species: | Rabbit |
| Clonality: | Polyclonal |
| React Species: | Human,Mouse,Rat,Pig,Cow,Horse,Rabbit,Sheep, |
| Applications: | WB=1:100-500IHC-P=1:400-800IHC-F=1:400-800Flow-Cyt=1:ug/TestIF=1:100-500 (Paraffin sections need antigen repair) not yet tested in other applications. optimal dilutions/concentrations should be determined by the end user. |
| Molecular weight: | 37kDa |
| Cellular localization: | The nucleus |
| Form: | Lyophilized or Liquid |

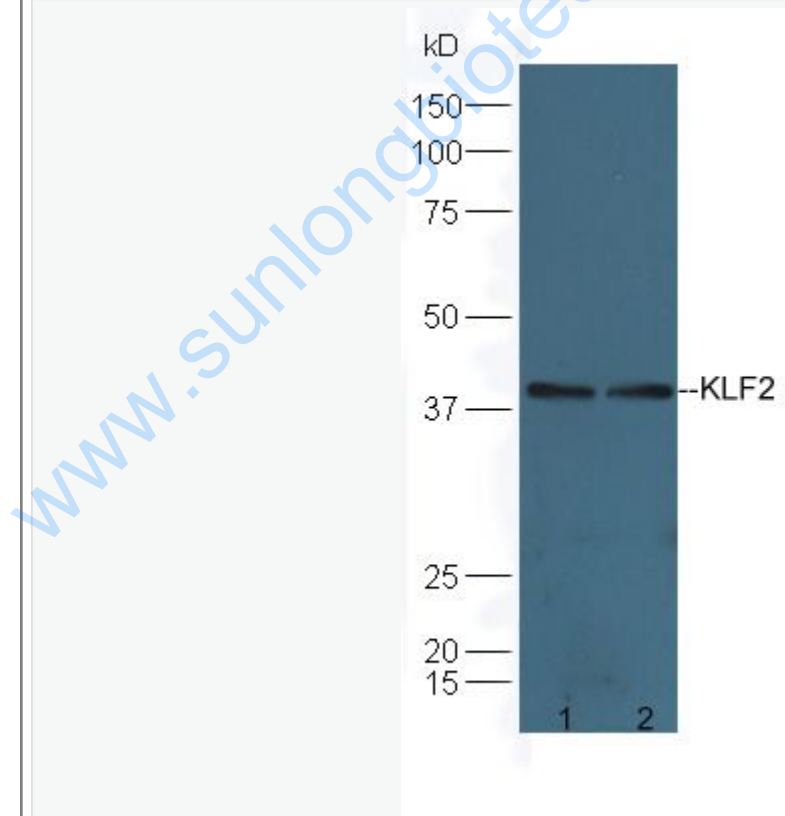
| | |
|------------------------|---|
| Concentration: | 1mg/ml |
| immunogen: | KLH conjugated synthetic peptide derived from human KLF2:251-355/355 |
| Lsotype: | IgG |
| Purification: | affinity purified by Protein A |
| Storage Buffer: | 0.01M TBS(pH7.4) with 1% BSA, 0.03% Proclin300 and 50% Glycerol. |
| Storage: | Store at -20 °C for one year. Avoid repeated freeze/thaw cycles. The lyophilized antibody is stable at room temperature for at least one month and for greater than a year when kept at -20°C. When reconstituted in sterile pH 7.4 0.01M PBS or diluent of antibody the antibody is stable for at least two weeks at 2-4 °C. |
| PubMed: | PubMed |
| Product Detail: | <p>Kruppel-like factors (KLFs) are a family of broadly expressed zinc finger transcription factors. KLF2 regulates T-cell trafficking by promoting expression of the lipid-binding receptor S1P1 (S1PR1; MIM 601974) and the selectin CD62L (SELL; MIM 153240) (summary by Weinreich et al., 2009 [PubMed 19592277]).[supplied by OMIM, Feb 2011]</p> <p>Function: Binds to the CACCC box in the beta-globin gene promoter and activates transcription .</p> <p>Subunit: Interacts with WWP1.</p> <p>Subcellular Location: Nucleus.</p> <p>Post-translational modifications: Ubiquitinated. Polyubiquitination involves WWP1 and leads to proteasomal degradation of this protein.</p> <p>Similarity: Belongs to the krueppel C2H2-type zinc-finger protein family. Contains 3 C2H2-type zinc fingers.</p> <p>SWISS: Q9Y5W3</p> <p>Gene ID: 10365</p> <p>Database links: Entrez Gene: 10365Human Entrez Gene: 16598Mouse Entrez Gene: 306330Rat</p> |

[Oimim: 602016](#)Human
[SwissProt: Q9Y5W3](#)Human
[SwissProt: Q60843](#)Mouse
[SwissProt: Q9ET58](#)Rat
[Unigene: 107740](#)Human
[Unigene: 726356](#)Human
[Unigene: 26938](#)Mouse
[Unigene: 92653](#)Rat

Important Note:

This product as supplied is intended for research use only, not for use in human, therapeutic or diagnostic applications.

Picture:



Sample:

Lane1:Brain (Mouse) Lysate at 30 ug

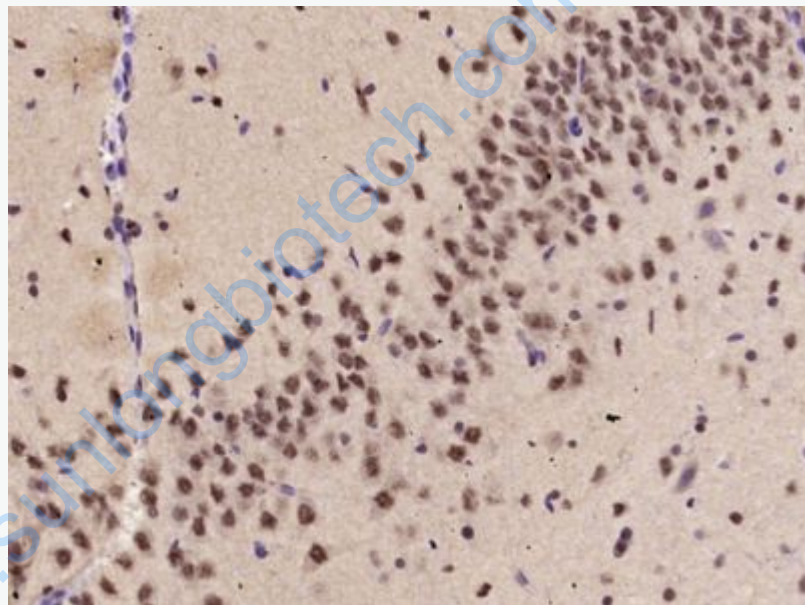
Lane2:HepG2 Cell Lysate at 30 ug

Primary: Anti-KLF2 (SL2772R) at 1:300 dilution;

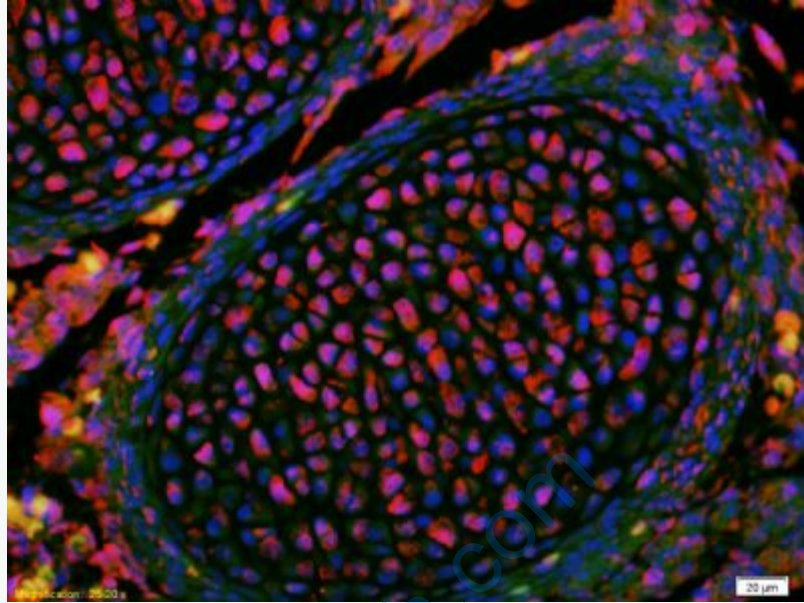
Secondary: HRP conjugated Goat-Anti-Rabbit IgG(bse-0295G-HRP) at 1: 5000 dilution;

Predicted band size :39 kD

Observed band size :39 kD



Paraformaldehyde-fixed, paraffin embedded (Rat brain); Antigen retrieval by microwave in sodium citrate buffer (pH6.0) ; Block endogenous peroxidase by 3% hydrogen peroxide for 30 minutes; Blocking buffer (3% BSA) at RT for 30min; Antibody incubation with (KLF2) Polyclonal Antibody, Unconjugated (SL2772R) at 1:400 overnight at 4°C, followed by conjugation to the secondary antibody (labeled with HRP)and DAB staining.



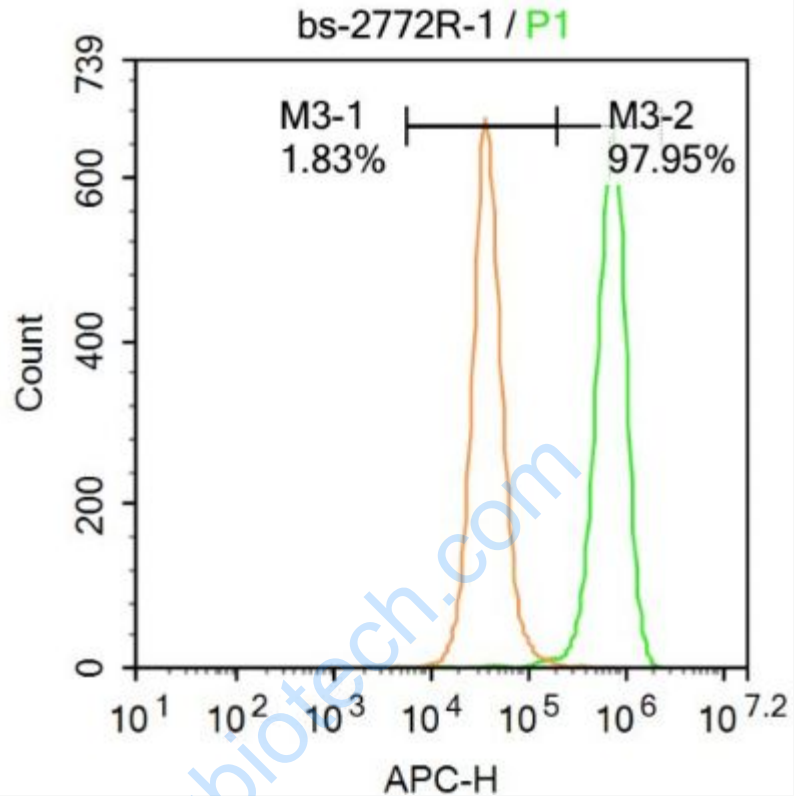
Tissue/cell: Mouse embryos;4% Paraformaldehyde-fixed and paraffin-embedded;

Antigen retrieval: citrate buffer (0.01M, pH 6.0), Boiling bathing for 15min;

Blocking buffer (normal goat serum,C-0005) at 37°C for 20 min;

Incubation:Anti-KLF2 Polyclonal Antibody, Unconjugated(SL2772R) 1:200, overnight at 4°C; The secondary antibody was Goat Anti-Rabbit IgG, Cy3 conjugated(SL2772R)used at 1:200 dilution for 40 minutes at 37°C.

DAPI(5ug/ml,blue,C-0033) was used to stain the cell nuclei



Blank control: A431.

Primary Antibody (green line): Rabbit Anti-KLF2 antibody (SL2772R)

Dilution: $1\mu\text{g} / 10^6$ cells;

Isotype Control Antibody (orange line): Rabbit IgG .

Secondary Antibody : Goat anti-rabbit IgG-AF647

Dilution: $1\mu\text{g} / \text{test}$.

Protocol

The cells were fixed with 4% PFA (10min at room temperature) and then permeabilized with 90% ice-cold methanol for 20 min at -20°C . The cells were then incubated in 5% BSA to block non-specific protein-protein interactions for 30 min at room temperature .Cells stained with Primary Antibody for 30 min at room

temperature. The secondary antibody used for 40 min at room temperature.

Acquisition of 20,000 events was performed.

www.sunlongbiotech.com