



Rabbit Anti-prox1 antibody

SL2774R

Product Name:	prox1
Chinese Name:	prox-1抗体
Alias:	Homeobox prospero like protein; Homeobox prospero like protein PROX1; Prospero related homeobox 1;prox-1; PROX 1.
Organism Species:	Rabbit
Clonality:	Polyclonal
React Species:	Human,Mouse,Rat,Dog,Pig,Cow,Horse,Rabbit,
Applications:	ELISA=1:2000-5000IHC-P=1:400-800 (Paraffin sections need antigen repair) not yet tested in other applications. optimal dilutions/concentrations should be determined by the end user.
Molecular weight:	81kDa
Cellular localization:	The nucleus
Form:	Lyophilized or Liquid
Concentration:	1mg/ml
immunogen:	KLH conjugated synthetic peptide derived from human prox-1:151-250/737
Lsotype:	IgG
Purification:	affinity purified by Protein A
Storage Buffer:	0.01M TBS(pH7.4) with 1% BSA, 0.03% Proclin300 and 50% Glycerol.
Storage:	Store at -20 °C for one year. Avoid repeated freeze/thaw cycles. The lyophilized antibody is stable at room temperature for at least one month and for greater than a year when kept at -20°C. When reconstituted in sterile pH 7.4 0.01M PBS or diluent of antibody the antibody is stable for at least two weeks at 2-4 °C.
PubMed:	PubMed
Product Detail:	<p>Prox1 is a prospero-related homeobox gene. Its expression pattern suggests it has a role in a variety of embryonic tissues and may play a fundamental role in early development of the CNS. It may regulate gene expression and the development of postmitotic undifferentiated young neurons.</p> <p>Subcellular Location: Nucleus.</p>

Tissue Specificity:

Most actively expressed in the developing lens. Detected also in embryonic brain, lung, liver and kidney. In adult, it is more abundant in heart and liver than in brain, skeletal muscle, kidney and pancreas.

SWISS:

Q92786

Gene ID:

5629

Database links:

[Entrez Gene: 395802](#)Chicken

[Entrez Gene: 5629](#)Human

[Entrez Gene: 19130](#)Mouse

[Entrez Gene: 305066](#)Rat

[Entrez Gene: 399348](#)Xenopus laevis

[Entrez Gene: 30679](#)Zebrafish

[Omim: 601546](#)Human

[SwissProt: Q91018](#)Chicken

[SwissProt: Q92786](#)Human

[SwissProt: P48437](#)Mouse

[Unigene: 741808](#)Human

[Unigene: 744931](#)Human

[Unigene: 132579](#)Mouse

[Unigene: 392678](#)Mouse

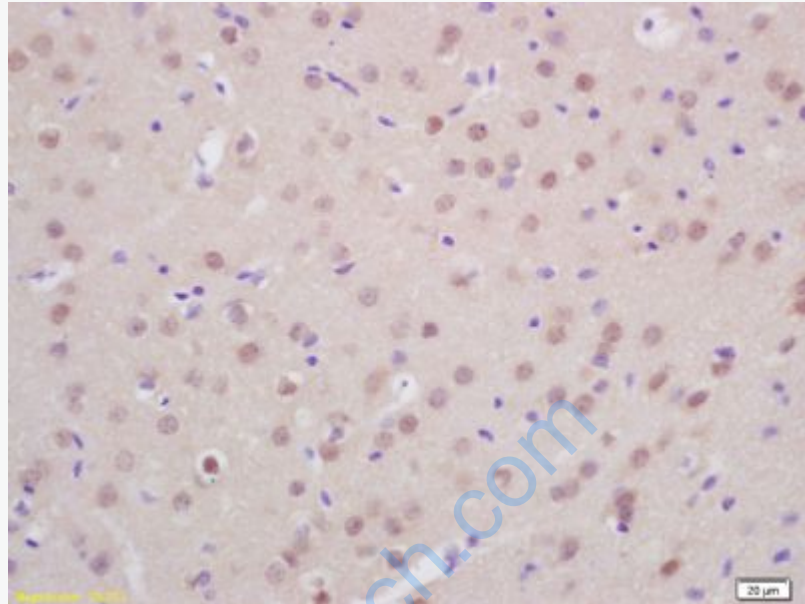
[Unigene: 26557](#)Rat

Important Note:

This product as supplied is intended for research use only, not for use in human, therapeutic or diagnostic applications.

prox-1主要表达于晶状体、心脏、肝脏、胰腺和神经系统等的非endothelial cells, 在成人正常组织、胚胎淋巴管endothelial cells或Tumour组织的淋巴endothelial cells上也可检测到。移除prox-1基因后, 胚胎发育时原始静脉endothelial

cells生成淋巴管过程被阻断, 表明prox-1是淋巴管生成最基本的调控因子.



Picture:

Tissue/cell: rat brain tissue; 4% Paraformaldehyde-fixed and paraffin-embedded;
Antigen retrieval: citrate buffer (0.01M, pH 6.0), Boiling bathing for 15min; Block
endogenous peroxidase by 3% Hydrogen peroxide for 30min; Blocking buffer
(normal goat serum,C-0005) at 37°C for 20 min;
Incubation: Anti-prox1 Polyclonal Antibody, Unconjugated(SL2774R) 1:200,
overnight at 4°C, followed by conjugation to the secondary antibody(SP-0023) and
DAB(C-0010) staining