



## Rabbit Anti-CD44v4 antibody

SL2783R

<b>Product Name:</b>	CD44v4
<b>Chinese Name:</b>	CD44V4抗体
<b>Alias:</b>	CD44 antigen; CD44 antigen isoform 4 precursor; CD44 molecule; Heparan sulfate proteoglycan; PGP1; CDW44; CSPG8; ECMR-III; HCELL; HUTCH-I; IN; LHR; MC56; MDU2; MDU3; MGC10468; MIC4; Pgp1; CD44 antigen isoform 4 precursor; hematopoietic cell E- and L-selectin ligand; chondroitin sulfate proteoglycan 8; cell surface glycoprotein CD44; GP90 lymphocyte homing/adhesion receptor; heparan sulfate proteoglycan; hyaluronate receptor; Hermes antigen; CD44 antigen; homing function and Indian blood group system; epican; phagocytic glycoprotein 1; extracellular matrix receptor III.
<b>Organism Species:</b>	Rabbit
<b>Clonality:</b>	Polyclonal
<b>React Species:</b>	Human,Mouse,Dog,Horse,Rabbit,
<b>Applications:</b>	WB=ELISA=1:500-2000IHC-P=1:400-800IHC-F=1:400-800Flow-Cyt=1µg/TestIF=1:100-500 (Paraffin sections need antigen repair) not yet tested in other applications. optimal dilutions/concentrations should be determined by the end user.
<b>Molecular weight:</b>	37kDa
<b>Cellular localization:</b>	The cell membrane
<b>Form:</b>	Lyophilized or Liquid
<b>Concentration:</b>	1mg/ml
<b>immunogen:</b>	KLH conjugated synthetic peptide derived from human CD44v4:141-240/361
<b>Lsotype:</b>	IgG
<b>Purification:</b>	affinity purified by Protein A
<b>Storage Buffer:</b>	0.01M TBS(pH7.4) with 1% BSA, 0.03% Proclin300 and 50% Glycerol.
<b>Storage:</b>	Store at -20 °C for one year. Avoid repeated freeze/thaw cycles. The lyophilized antibody is stable at room temperature for at least one month and for greater than a year when kept at -20°C. When reconstituted in sterile pH 7.4 0.01M PBS or diluent of antibody the antibody is stable for at least two weeks at 2-4 °C.
<b>PubMed:</b>	<a href="#">PubMed</a>

The protein encoded by this gene is a cell-surface glycoprotein involved in cell-cell interactions, cell adhesion and migration. It is a receptor for hyaluronic acid (HA) and can also interact with other ligands, such as osteopontin, collagens, and matrix metalloproteinases (MMPs). This protein participates in a wide variety of cellular functions including lymphocyte activation, recirculation and homing, hematopoiesis, and tumor metastasis. Transcripts for this gene undergo complex alternative splicing that results in many functionally distinct isoforms, however, the full length nature of some of these variants has not been determined. Alternative splicing is the basis for the structural and functional diversity of this protein, and may be related to tumor metastasis. [provided by RefSeq].

**Function:**

Receptor for hyaluronic acid (HA). Mediates cell-cell and cell-matrix interactions through its affinity for HA, and possibly also through its affinity for other ligands such as osteopontin, collagens, and matrix metalloproteinases (MMPs). Adhesion with HA plays an important role in cell migration, tumor growth and progression. Also involved in lymphocyte activation, recirculation and homing, and in hematopoiesis. Altered expression or dysfunction causes numerous pathogenic phenotypes. Great protein heterogeneity due to numerous alternative splicing and post-translational modification events.

**Subcellular Location:**

Membrane.

**Tissue Specificity:**

Isoform 10 (epithelial isoform) is expressed by cells of epithelium and highly expressed by carcinomas. Expression is repressed in neuroblastoma cells.

**Post-translational modifications:**

Proteolytically cleaved in the extracellular matrix by specific proteinases (possibly MMPs) in several cell lines and tumors.

N-glycosylated.

O-glycosylated; contains more-or-less-sulfated chondroitin sulfate glycans, whose number may affect the accessibility of specific proteinases to their cleavage site(s).

Phosphorylated; activation of PKC results in the dephosphorylation of Ser-706 (constitutive phosphorylation site), and the phosphorylation of Ser-672.

**Similarity:**

Contains 1 Link domain.

**SWISS:**

P16070

**Gene ID:**

960

**Product Detail:**

**Database links:**

[Entrez Gene: 100034221](#)Horse

[Entrez Gene: 960](#)Human

[Entrez Gene: 12505](#)Mouse

[Oimim: 107269](#)Human

[SwissProt: Q05078](#)Horse

[SwissProt: P16070](#)Human

[SwissProt: P15379](#)Mouse

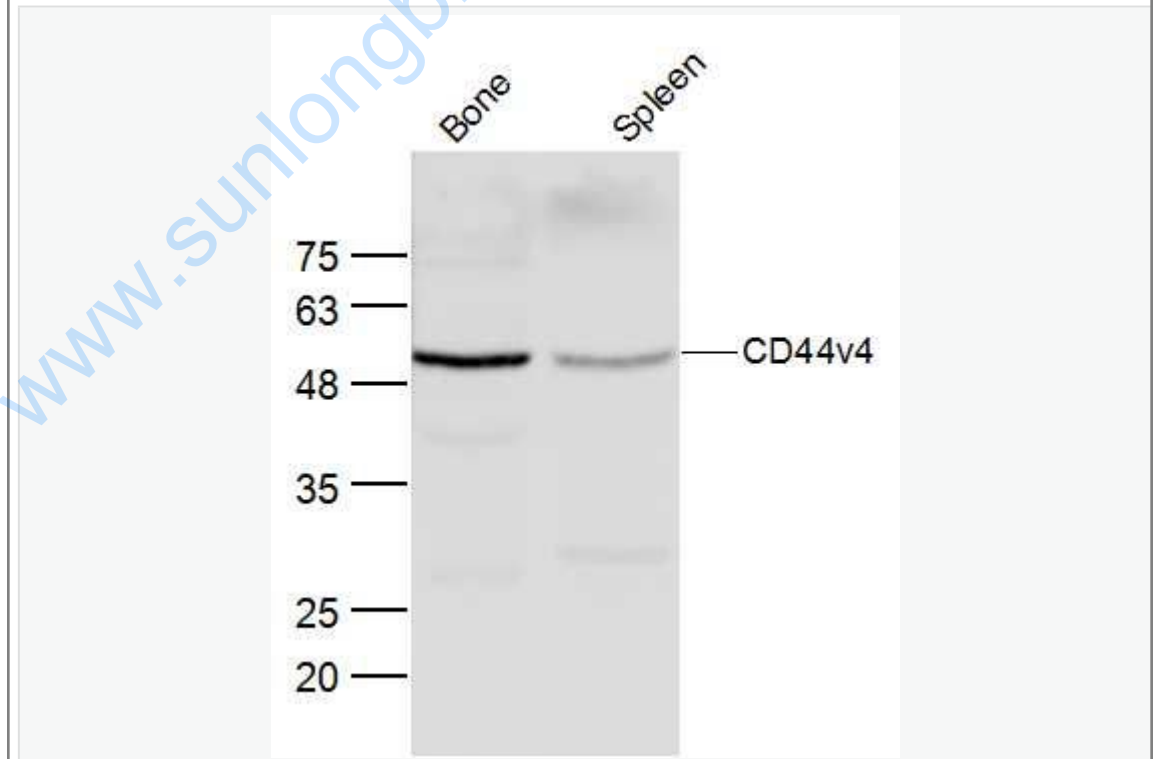
[Unigene: 502328](#)Human

[Unigene: 423621](#)Mouse

**Important Note:**

This product as supplied is intended for research use only, not for use in human, therapeutic or diagnostic applications.

**Picture:**



Sample:

Bone (Mouse) Lysate at 40 ug

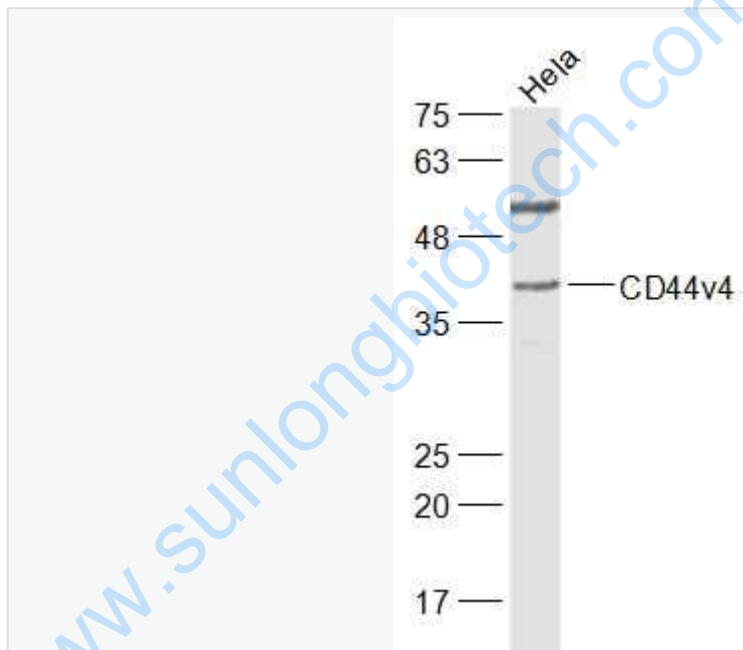
Spleen (Mouse) Lysate at 40 ug

Primary: Anti-CD44v4 (SL2783R) at 1/300 dilution

Secondary: IRDye800CW Goat Anti-Rabbit IgG at 1/20000 dilution

Predicted band size: 37 kD

Observed band size: 50 kD



Sample:

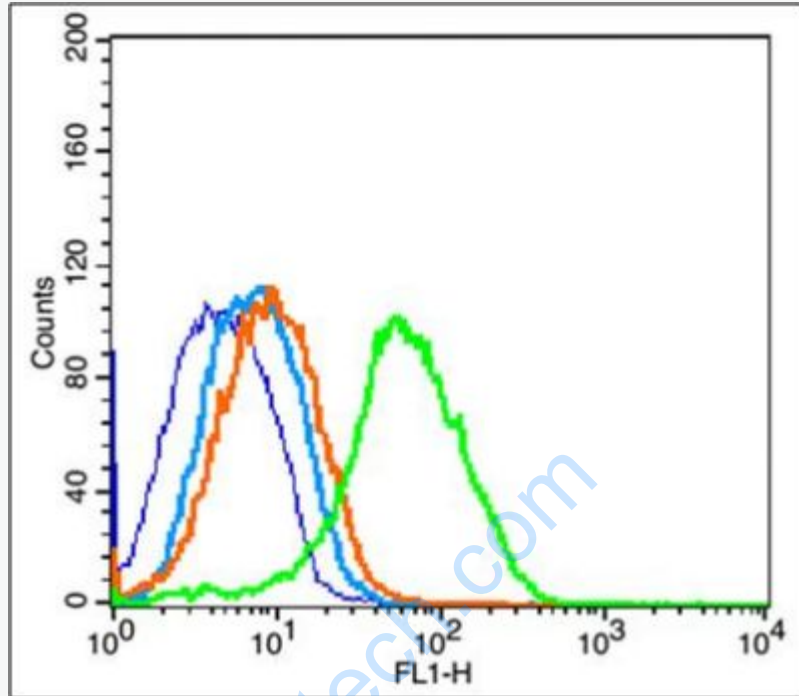
HeLa(Human) Cell Lysate at 30 ug

Primary: Anti-CD44v4? (SL2783R) at 1/1000 dilution

Secondary: IRDye800CW Goat Anti-Rabbit IgG at 1/20000 dilution

Predicted band size: 37 kD

Observed band size: 37 kD

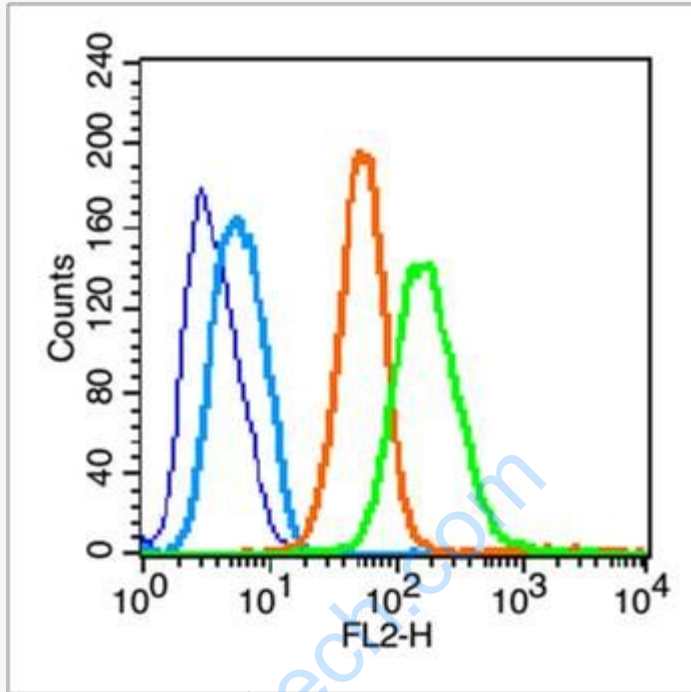


Blank control(blue): Mouse spleen (fixed with 2% paraformaldehyde for 10 min at 37°C).

Primary Antibody:Rabbit Anti-CD44v4 antibody (SL2783R); Dilution: 1 $\mu$ g in 100  $\mu$ L 1X PBS containing 0.5% BSA;

Isotype Control Antibody: Rabbit IgG(orange) ,used under the same conditions;

Secondary Antibody: Goat anti-rabbit IgG-FITC(white blue), Dilution: 1:200 in 1 X PBS containing 0.5% BSA.



Blank control(blue): U251 (fixed with Ice-cold 70% ethanol overnight at 4 °C).

Primary Antibody:Rabbit Anti-CD44v4 antibody (SL2783R); Dilution: 0.2µg in 100 µL 1X PBS containing 0.5% BSA;

Isotype Control Antibody: Rabbit IgG(orange) ,used under the same conditions;

Secondary Antibody: Goat anti-rabbit IgG-FITC(white blue), Dilution: 1:200 in 1 X PBS containing 0.5% BSA.