




Rabbit Anti-Claudin 4 antibody

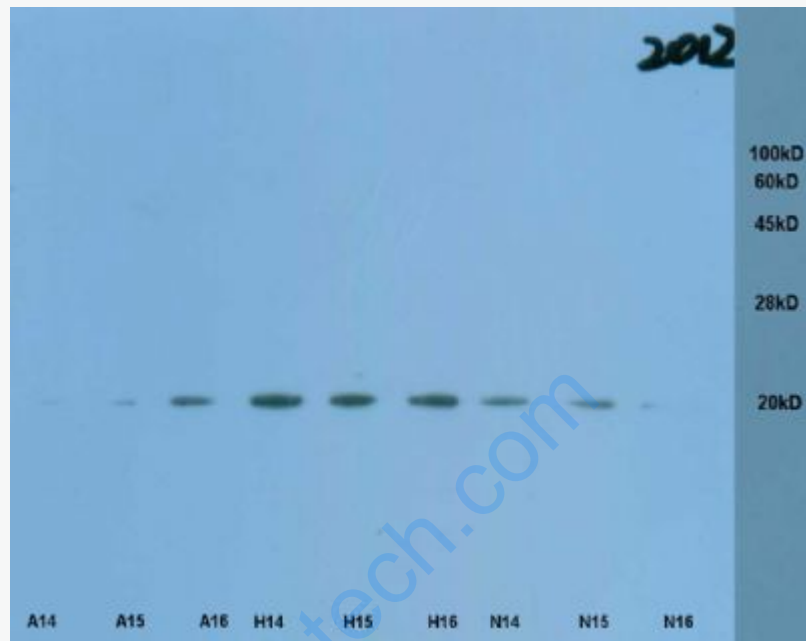
SL2790R

Product Name:	Claudin 4
Chinese Name:	紧密连接蛋白4抗体
Alias:	CLDN 4; CLDN4; Clostridium perfringens enterotoxin receptor; Clostridium perfringens enterotoxin receptor 1; CPE R; CPE receptor; CPER; CPETR 1; CPETR; CPETR1; hCPE R; WBSCR8; Williams Beuren syndrome chromosome region 8 protein; Claudin-4; CLD4_HUMAN; Clostridium perfringens enterotoxin receptor; CPE-R; CPE-receptor.
文献引用  :	Specific References(1) SL2790R has been referenced in 1 publications. [IF=3.68] Wang, Tao, et al. "Notch inhibition promotes fetal liver stem/progenitor cells differentiation into hepatocytes via the inhibition of HNF-1 β ." Cell and Tissue Research (2014): 1-12. WB;Rat. PubMed:24737489
Organism Species:	Rabbit
Clonality:	Polyclonal
React Species:	Human,Mouse,Rat,Chicken,Dog,Pig,Cow,Horse,Rabbit,Sheep,
Applications:	WB=1:500-2000ELISA=1:2000-5000IHC-P=1:400-800IHC-F=1:400-800IF=1:100-500 (Paraffin sections need antigen repair) not yet tested in other applications. optimal dilutions/concentrations should be determined by the end user.
Molecular weight:	23kDa
Cellular localization:	The cell membrane
Form:	Lyophilized or Liquid
Concentration:	1mg/ml
immunogen:	KLH conjugated synthetic peptide derived from human CLDN4:21-120/209<Extracellular>
Lsotype:	IgG
Purification:	affinity purified by Protein A

Storage Buffer:	0.01M TBS(pH7.4) with 1% BSA, 0.03% Proclin300 and 50% Glycerol.
Storage:	Store at -20 °C for one year. Avoid repeated freeze/thaw cycles. The lyophilized antibody is stable at room temperature for at least one month and for greater than a year when kept at -20°C. When reconstituted in sterile pH 7.4 0.01M PBS or diluent of antibody the antibody is stable for at least two weeks at 2-4 °C.
PubMed:	PubMed
Product Detail:	<p>Claudin 1-8 proteins are a family of transmembrane proteins associated with tight junctions. Tight junctions are specialized regions of cell to cell contact made up of network of strands that act as a molecular gasket for preventing the leakage of ions, water etc. between cells. They are abundant in luminal epithelial sheets where they maintain epithelial cell polarity. Different tissues exhibit different Claudin composition.</p> <p>Subunit: Directly interacts with TJP1/ZO-1, TJP2/ZO-2 and TJP3/ZO-3. Interacts with EPHA2; phosphorylates CLDN4 and may regulate tight junctions.</p> <p>Subcellular Location: Cell junction, tight junction. Cell membrane; Multi-pass membrane protein.</p> <p>Similarity: Belongs to the claudin family.</p> <p>SWISS: O14493</p> <p>Gene ID: 1364</p> <p>Database links:</p> <p>Entrez Gene: 1364Human Entrez Gene: 12740Mouse Oimim: 602909Human SwissProt: O14493Human SwissProt: O35054Mouse Unigene: 647036Human Unigene: 699253Human Unigene: 7339Mouse</p> <p>Important Note: This product as supplied is intended for research use only, not for use in human,</p>

therapeutic or diagnostic applications.

Picture:



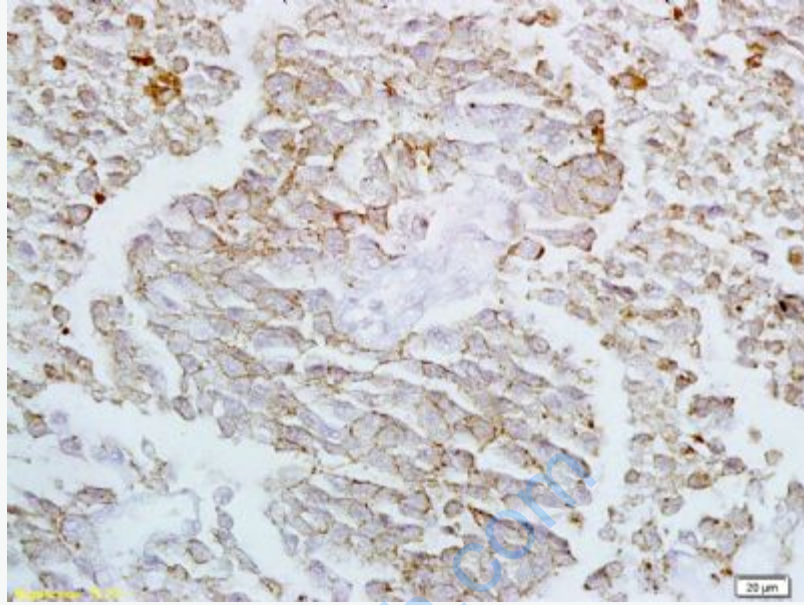
Sample: Lung(Rat) lysate at 30ug;

Primary: Anti-Claudin-4 (SL2790R) at 1:200 dilution;

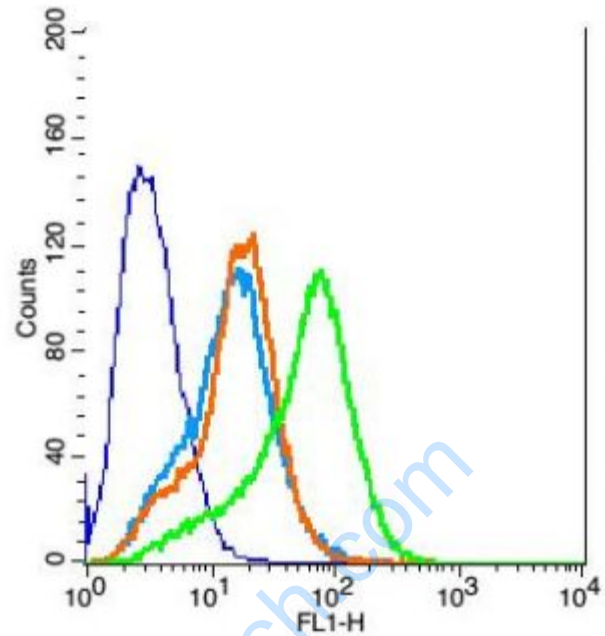
Secondary: HRP conjugated Goat-Anti-Rabbit IgG(SL2790R) at 1: 3000 dilution;

Predicted band size : 23kD

Observed band size : 23kD



Tissue/cell: rat lung tissue; 4% Paraformaldehyde-fixed and paraffin-embedded;
Antigen retrieval: citrate buffer (0.01M, pH 6.0), Boiling bathing for 15min; Block endogenous peroxidase by 3% Hydrogen peroxide for 30min; Blocking buffer (normal goat serum,C-0005) at 37°C for 20 min;
Incubation: Anti-Claudin-4 Polyclonal Antibody, Unconjugated(SL2790R) 1:200, overnight at 4°C, followed by conjugation to the secondary antibody(SP-0023) and DAB(C-0010) staining



Key	Name	Parameter	Gate
—	293FT-blank.041	FL1-H	G1
—	bs-0295G-FITC-293FT-2.042	FL1-H	G1
—	bs-0295P-(FITC)-293FT-0.5.046	FL1-H	G1
—	bs-2790R-(FITC)-293FT-5.048	FL1-H	G1

Blank control: 293FT(blue)

Isotype Control Antibody: Rabbit IgG(orange) ; Secondary Antibody: Goat anti-rabbit IgG-FITC(white blue), Dilution: 1:100 in 1 X PBS containing 0.5% BSA ;

Primary Antibody Dilution: 5 μ l in 100 μ L1X PBS containing 0.5% BSA(green).