



Rabbit Anti-Endo G antibody

SL2800R

Product Name:	Endo G
Chinese Name:	核酸内切酶G抗体
Alias:	EndoG; Endonuclease G; Endonuclease G mitochondrial; EndonucleaseG; FLJ27463; ENDOG; NUCG_HUMAN; Endo G.
Organism Species:	Rabbit
Clonality:	Polyclonal
React Species:	Human,Mouse,Rat,Dog,Pig,Cow,Horse,Rabbit,Sheep,Guinea Pig,
Applications:	WB=1:500-2000ELISA=1:500-1000IHC-P=1:400-800IHC-F=1:400-800IF=1:100-500 (Paraffin sections need antigen repair) not yet tested in other applications. optimal dilutions/concentrations should be determined by the end user.
Molecular weight:	35kDa
Cellular localization:	The nucleuscytoplasmic Mitochondrion
Form:	Lyophilized or Liquid
Concentration:	1mg/ml
immunogen:	KLH conjugated synthetic peptide derived from human Endo G:101-200/297
Lsotype:	IgG
Purification:	affinity purified by Protein A
Storage Buffer:	0.01M TBS(pH7.4) with 1% BSA, 0.03% Proclin300 and 50% Glycerol.
Storage:	Store at -20 °C for one year. Avoid repeated freeze/thaw cycles. The lyophilized antibody is stable at room temperature for at least one month and for greater than a year when kept at -20°C. When reconstituted in sterile pH 7.4 0.01M PBS or diluent of antibody the antibody is stable for at least two weeks at 2-4 °C.
PubMed:	PubMed
Product Detail:	The protein encoded by this gene is a nuclear encoded endonuclease that is localized in the mitochondrion. The encoded protein is widely distributed among animals and cleaves DNA at GC tracts. This protein is capable of generating the RNA primers required by DNA polymerase gamma to initiate replication of mitochondrial DNA. [provided by RefSeq, Jul 2008].

Function:

Cleaves DNA at double-stranded (DG)_n.(DC)_n and at single-stranded (DC)_n tracts. In addition to deoxyribonuclease activities, also has ribonuclease (RNase) and RNase H activities. Capable of generating the RNA primers required by DNA polymerase gamma to initiate replication of mitochondrial DNA.

Subunit:

Homodimer.

Subcellular Location:

Mitochondrion.

Similarity:

Belongs to the DNA/RNA non-specific endonuclease family.

SWISS:

Q14249

Gene ID:

2021

Database links:

[Entrez Gene: 2021](#)Human

[Entrez Gene: 13804](#)Mouse

[Entrez Gene: 362100](#)Rat

[Oimim: 600440](#)Human

[SwissProt: Q14249](#)Human

[SwissProt: O08600](#)Mouse

[Unigene: 224137](#)Human

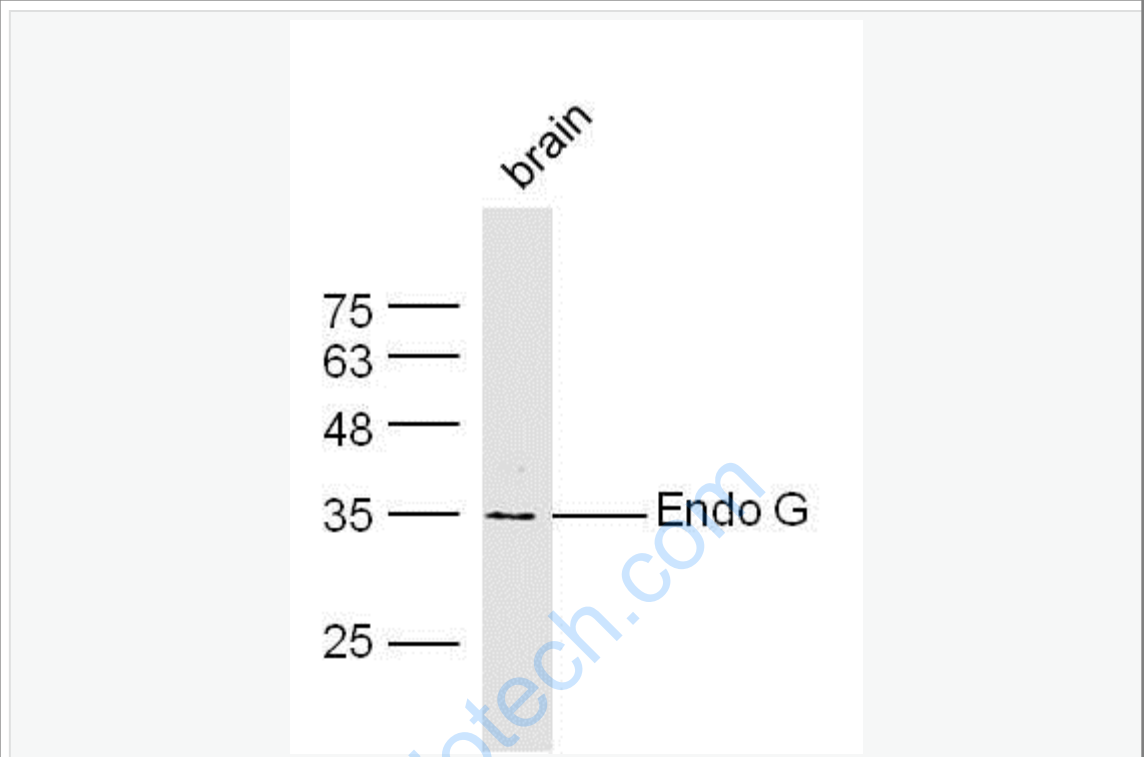
[Unigene: 474473](#)Mouse

[Unigene: 3807](#)Rat

Important Note:

This product as supplied is intended for research use only, not for use in human, therapeutic or diagnostic applications.

Picture:



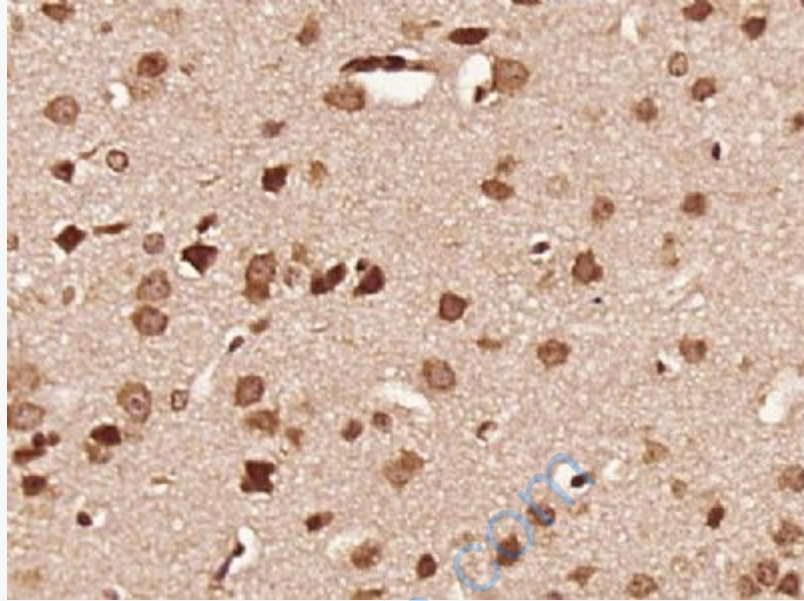
Sample: Brain (Mouse) Lysate at 30 ug

Primary: Anti- Endo G (SL2800R) at 1/300 dilution

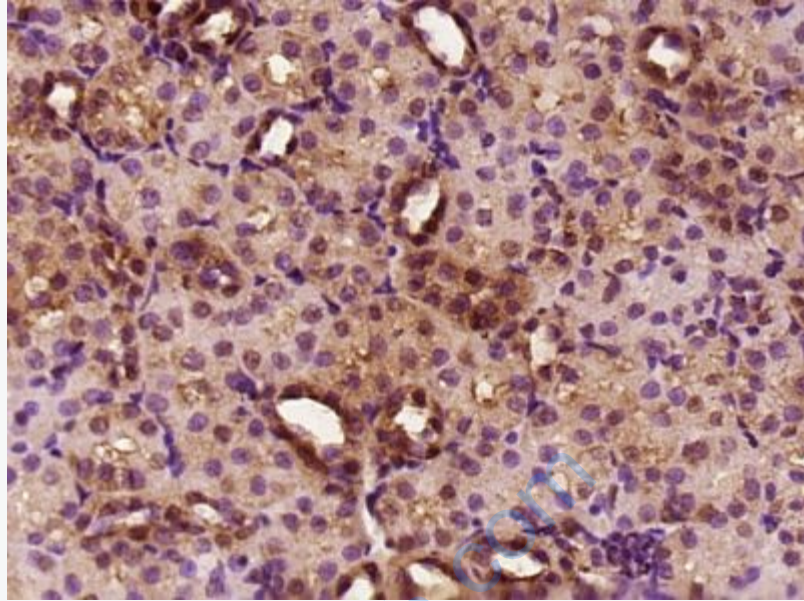
Secondary: IRDye800CW Goat Anti-Mouse IgG at 1/10000 dilution

Predicted band size: 35kD

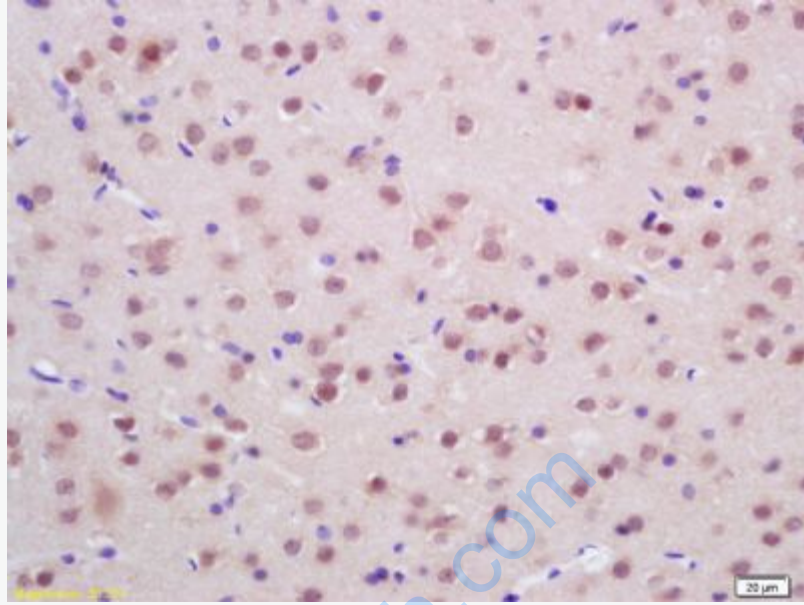
Observed band size: 35 kD



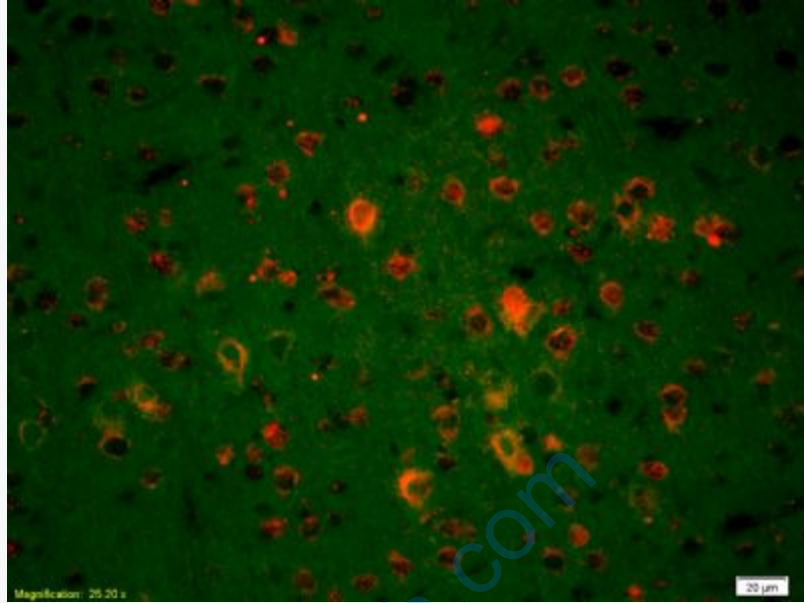
Paraformaldehyde-fixed, paraffin embedded (Mouse brain); Antigen retrieval by boiling in sodium citrate buffer (pH6.0) for 15min; Block endogenous peroxidase by 3% hydrogen peroxide for 20 minutes; Blocking buffer (normal goat serum) at 37°C for 30min; Antibody incubation with (Endo G) Polyclonal Antibody, Unconjugated (SL2800R) at 1:400 overnight at 4°C, followed by operating according to SP Kit(Rabbit) (sp-0023) instructions and DAB staining.



Paraformaldehyde-fixed, paraffin embedded (rat kidney tissue); Antigen retrieval by boiling in sodium citrate buffer (pH6.0) for 15min; Block endogenous peroxidase by 3% hydrogen peroxide for 20 minutes; Blocking buffer (normal goat serum) at 37°C for 30min; Antibody incubation with (Endo G) Polyclonal Antibody, Unconjugated (SL2800R) at 1:400 overnight at 4°C, followed by operating according to SP Kit(Rabbit) (sp-0023) instructions and DAB staining.



Tissue/cell: rat brain tissue; 4% Paraformaldehyde-fixed and paraffin-embedded;
Antigen retrieval: citrate buffer (0.01M, pH 6.0), Boiling bathing for 15min; Block endogenous peroxidase by 3% Hydrogen peroxide for 30min; Blocking buffer (normal goat serum,C-0005) at 37°C for 20 min;
Incubation: Anti-Endo G Polyclonal Antibody, Unconjugated(SL2800R) 1:200, overnight at 4°C, followed by conjugation to the secondary antibody(SP-0023) and DAB(C-0010) staining



Tissue/cell: rat brain tissue;4% Paraformaldehyde-fixed and paraffin-embedded;
Antigen retrieval: citrate buffer (0.01M, pH 6.0), Boiling bathing for 15min;
Blocking buffer (normal goat serum,C-0005) at 37°C for 20 min;
Incubation: Anti-Endo G Polyclonal Antibody, Unconjugated(SL2800R) 1:200,
overnight at 4°C; The secondary antibody was Goat Anti-Rabbit IgG, Cy3
conjugated(SL2800R)used at 1:200 dilution for 40 minutes at 37°C.