



## Rabbit Anti-Smoothened antibody

SL2801R

<b>Product Name:</b>	Smoothened
<b>Chinese Name:</b>	Transmembrane proteinSmoothened抗体
<b>Alias:</b>	Gx; Gx protein; SMO; SMOH; Smoothened homolog (Drosophila); Smoothened homolog; Smoothened homolog precursor (SMO) (Gx protein); SMO HUMAN.
<b>Organism Species:</b>	Rabbit
<b>Clonality:</b>	Polyclonal
<b>React Species:</b>	Human,Mouse,Rat,Chicken,Dog,Pig,Cow,Horse,Rabbit,
<b>Applications:</b>	WB=1:500-2000ELISA=1:500-1000 not yet tested in other applications. optimal dilutions/concentrations should be determined by the end user.
<b>Molecular weight:</b>	84kDa
<b>Cellular localization:</b>	The cell membrane
<b>Form:</b>	Lyophilized or Liquid
<b>Concentration:</b>	1mg/ml
<b>immunogen:</b>	KLH conjugated synthetic peptide derived from human Smoothened:551-650/787<Cytoplasmic>
<b>Lsotype:</b>	IgG
<b>Purification:</b>	affinity purified by Protein A
<b>Storage Buffer:</b>	0.01M TBS(pH7.4) with 1% BSA, 0.03% Proclin300 and 50% Glycerol.
<b>Storage:</b>	Store at -20 °C for one year. Avoid repeated freeze/thaw cycles. The lyophilized antibody is stable at room temperature for at least one month and for greater than a year when kept at -20°C. When reconstituted in sterile pH 7.4 0.01M PBS or diluent of antibody the antibody is stable for at least two weeks at 2-4 °C.
<b>PubMed:</b>	<a href="#">PubMed</a>
<b>Product Detail:</b>	The protein encoded by this gene is a G protein-coupled receptor that interacts with the patched protein, a receptor for hedgehog proteins. The encoded protein transduces signals to other proteins after activation by a hedgehog protein/patched protein complex. [provided by RefSeq, Jul 2010]
	<b>Function:</b>

G protein-coupled receptor that probably associates with the patched protein (PTCH) to transduce the hedgehog's proteins signal. Binding of sonic hedgehog (SHH) to its receptor patched is thought to prevent normal inhibition by patched of smoothed (SMO). Required for the accumulation of KIF7 and GLI3 in the cilia.

**Subunit:**

Interacts with ARRB2. Interacts with KIF7.

**Subcellular Location:**

Membrane.

**Similarity:**

Belongs to the G-protein coupled receptor Fz/Smo family.  
Contains 1 FZ (frizzled) domain.

**SWISS:**

Q99835

**Gene ID:**

6608

**Database links:**

[Entrez Gene: 395949](#)Chicken

[Entrez Gene: 100033990](#)Horse

[Entrez Gene: 6608](#)Human

[Entrez Gene: 319757](#)Mouse

[Entrez Gene: 25273](#)Rat

[Entrez Gene: 30225](#)Zebrafish

[Omim: 601500](#)Human

[SwissProt: O42224](#)Chicken

[SwissProt: Q99835](#)Human

[SwissProt: P56726](#)Mouse

[SwissProt: P97698](#)Rat

[Unigene: 437846](#)Human

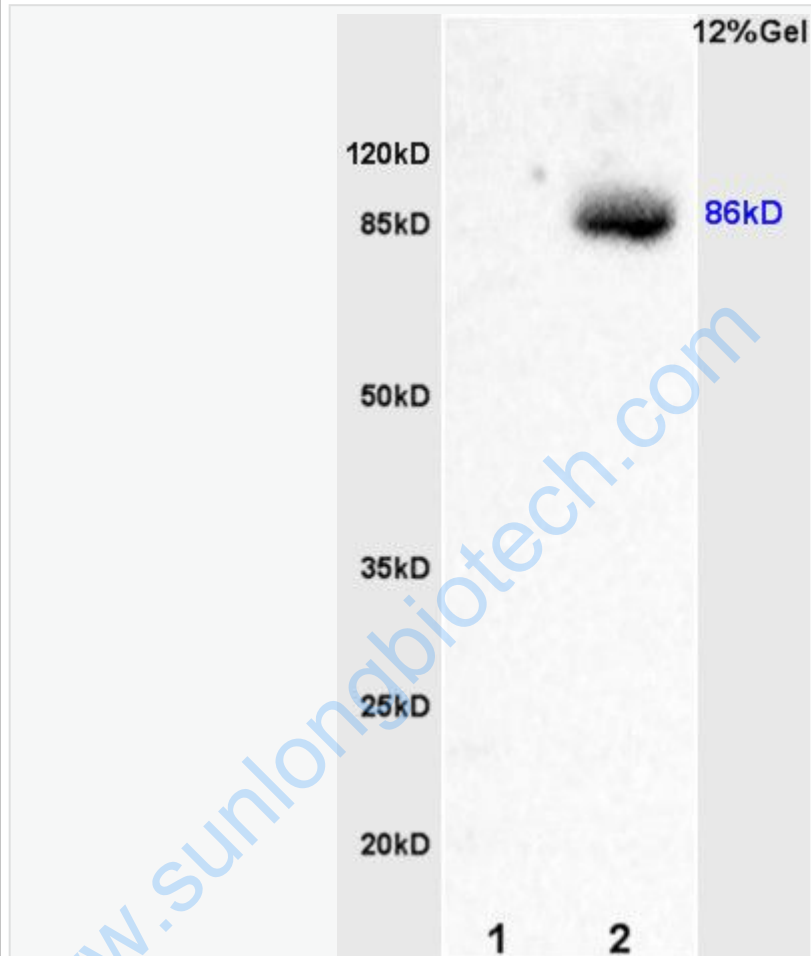
[Unigene: 29279](#)Mouse

[Unigene: 44429](#)Rat

**Important Note:**

This product as supplied is intended for research use only, not for use in human, therapeutic or diagnostic applications.

**Picture:**



Sample:

Lane1: Kidney(Rat) Lysate at 30 ug

Lane2: Brain(Rat) Lysate at 30 ug

Primary: Anti-Smoothed/SMO (SL2801R) at 1:200 dilution;

Secondary: HRP conjugated Goat Anti-Rabbit IgG(SL2801R) at 1: 3000 dilution;

Predicted band size : 84kD

Observed band size : 86kD

