



Rabbit Anti-phospho-A Raf (Ser214) antibody

SL3005R

Product Name:	phospho-A Raf (Ser214)
Chinese Name:	磷酸化A-Raf抗体
Alias:	A raf 1; A Raf proto oncogene serine/threonine protein kinase; ARAF 1; ARAF; ARaf proto oncogene serine/threonine protein kinase; ARAF1; Oncogene Araf1; Oncogene PKS2; PKS 2; PKS; PKS2; Proto oncogene Pks; RAFA 1; RAFA1; Ras binding protein DA Raf; v raf murine sarcoma 3611 viral oncogene homolog; v raf murine sarcoma 3611 viral oncogene homolog 1; v raf oncogene homolog 1 (murine sarcoma 3611 virus); ARAF HUMAN.
Organism Species:	Rabbit
Clonality:	Polyclonal
React Species:	Human,Mouse,Rat,Dog,Pig,Cow,Horse,Rabbit,
Applications:	ELISA=1:500-1000IHC-P=1:400-800IHC-F=1:400-800IF=1:100-500 (Paraffin sections need antigen repair) not yet tested in other applications. optimal dilutions/concentrations should be determined by the end user.
Molecular weight:	67kDa
Cellular localization:	cytoplasmic
Form:	Lyophilized or Liquid
Concentration:	1mg/ml
immunogen:	KLH conjugated Synthesised phosphopeptide derived from human A Raf around the phosphorylation site of Ser214:ST(p-S)TP
Isotype:	IgG
Purification:	affinity purified by Protein A
Storage Buffer:	0.01M TBS(pH7.4) with 1% BSA, 0.03% Proclin300 and 50% Glycerol.
Storage:	Store at -20 °C for one year. Avoid repeated freeze/thaw cycles. The lyophilized antibody is stable at room temperature for at least one month and for greater than a year when kept at -20°C. When reconstituted in sterile pH 7.4 0.01M PBS or diluent of antibody the antibody is stable for at least two weeks at 2-4 °C.
PubMed:	PubMed

The RAF family of signaling proteins has three isoforms: A RAF, RAF 1 and B RAF. These proteins are instrumental in forwarding the stimulus generated by mitogens from monomeric G proteins to the MAP kinase pathway. RAF 1 is known to be downstream of Ras and binds to it by an N terminal noncatalytic domain. This domain is conserved in A RAF and B RAF. 14-3-3 is also known to be an activator of RAFs. Activated RAF directly phosphorylates and activates MEK. A RAF is expressed at a very high concentration in urogenital and kidney tissues.

Function:

Involved in the transduction of mitogenic signals from the cell membrane to the nucleus.

Tissue Specificity:

Predominantly in urogenital tissues.

Similarity:

Belongs to the protein kinase superfamily. TKL Ser/Thr protein kinase family. RAF subfamily.

Contains 1 phorbol-ester/DAG-type zinc finger.

Contains 1 protein kinase domain.

Contains 1 RBD (Ras-binding) domain.

SWISS:

P10398

Gene ID:

369

Database links:

[Entrez Gene: 369](#) Human

[Entrez Gene: 397601](#) Pig

[Entrez Gene: 64363](#) Rat

[Olim: 311010](#) Human

[SwissProt: P10398](#) Human

[SwissProt: O19004](#) Pig

[SwissProt: P14056](#) Rat

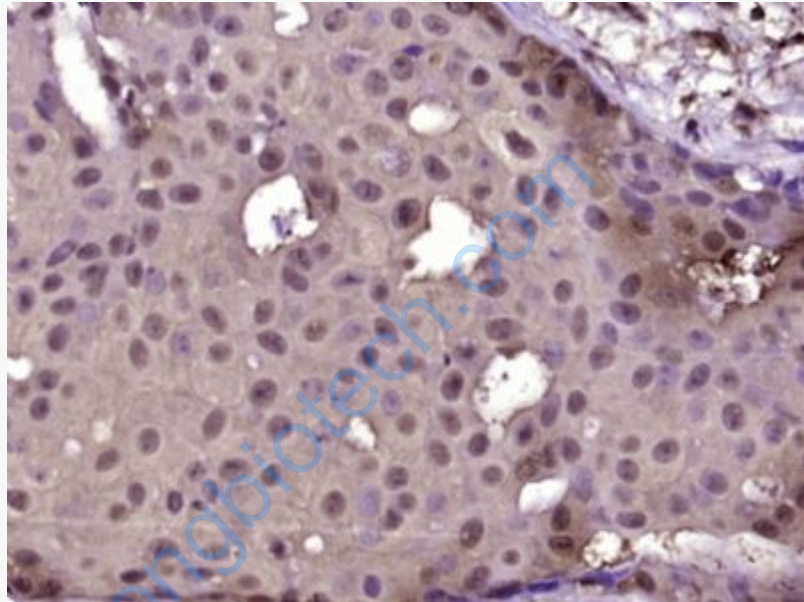
[Unigene: 446641](#) Human

[Unigene: 1714](#) Rat

Product Detail:

Important Note:

This product as supplied is intended for research use only, not for use in human, therapeutic or diagnostic applications.



Picture:

Paraformaldehyde-fixed, paraffin embedded (Human breast carcinoma); Antigen retrieval by boiling in sodium citrate buffer (pH6.0) for 15min; Block endogenous peroxidase by 3% hydrogen peroxide for 20 minutes; Blocking buffer (normal goat serum) at 37°C for 30min; Antibody incubation with (phospho-A Raf (Ser214)) Polyclonal Antibody, Unconjugated (SL3005R) at 1:400 overnight at 4°C, followed by operating according to SP Kit(Rabbit) (sp-0023) instructions and DAB staining.