



Rabbit Anti-phospho-arfaptin 2 (Ser260) antibody

SL3006R

Product Name:	phospho-arfaptin 2 (Ser260)
Chinese Name:	磷酸化ADP核糖基化因子Binding protein2抗体
Alias:	arfaptin 2 (phospho Ser260); arfaptin 2 (phospho S260); ADP ribosylation factor interacting protein 2; Arfaptin 2; ARFIP2; Partner of RAC1; POR1; ARFP2 HUMAN.
Organism Species:	Rabbit
Clonality:	Polyclonal
React Species:	Human,Mouse,Rat,Dog,Cow,Rabbit,Sheep,
Applications:	WB=1:500-2000ELISA=1:500-1000IHC-P=1:400-800IHC-F=1:400-800IF=1:100-500 (Paraffin sections need antigen repair) not yet tested in other applications. optimal dilutions/concentrations should be determined by the end user.
Molecular weight:	38kDa
Cellular localization:	cytoplasmic
Form:	Lyophilized or Liquid
Concentration:	1mg/ml
immunogen:	KLH conjugated Synthesised phosphopeptide derived from human arfaptin 2 around the phosphorylation site of Ser260:LE(p-S)AQ
Lsotype:	IgG
Purification:	affinity purified by Protein A
Storage Buffer:	0.01M TBS(pH7.4) with 1% BSA, 0.03% Proclin300 and 50% Glycerol.
Storage:	Store at -20 °C for one year. Avoid repeated freeze/thaw cycles. The lyophilized antibody is stable at room temperature for at least one month and for greater than a year when kept at -20°C. When reconstituted in sterile pH 7.4 0.01M PBS or diluent of antibody the antibody is stable for at least two weeks at 2-4 °C.
PubMed:	PubMed
Product Detail:	ARFIP2 is a ubiquitously expressed protein implicated in mediating cross talk between RAC and ARF small GTPases. It has been shown that ARFIP2 binds specifically to GTP-bound ARF1 and ARF6, but binds to Rac-GTP and Rac-GDP with similar affinities. The X-ray structure of arfaptin reveals an elongated, crescent-shaped dimer of

3-helix coiled-coils. Structures of arfaptin with Rac bound to either GDP or the slowly hydrolysable analog GMPPNP show that the switch regions adopt similar conformations in both complexes.

Function:

Putative target protein of ADP-ribosylation factor. Involved in membrane ruffling.

Subunit:

Interacts with RAC1 by binding directly to it. Specifically binds to GTP-bound ARF1 and ARF6, but binds to RAC1.GTP and RAC1.GDP with similar affinities. Directly interacts with ARL1 GTP-bound form; this interaction leads to a > 4-fold increase in the amount of ARL1-bound GTP at steady state level.

Similarity:

Contains 1 AH domain.

SWISS:

P53365

Gene ID:

23647

Database links:

[Entrez Gene: 23647](#) Human

[Entrez Gene: 76932](#) Mouse

[Entrez Gene: 293344](#) Rat

[Omim: 601638](#) Human

[SwissProt: P53365](#) Human

[SwissProt: Q8K221](#) Mouse

[SwissProt: Q6AY65](#) Rat

[Unigene: 595146](#) Human

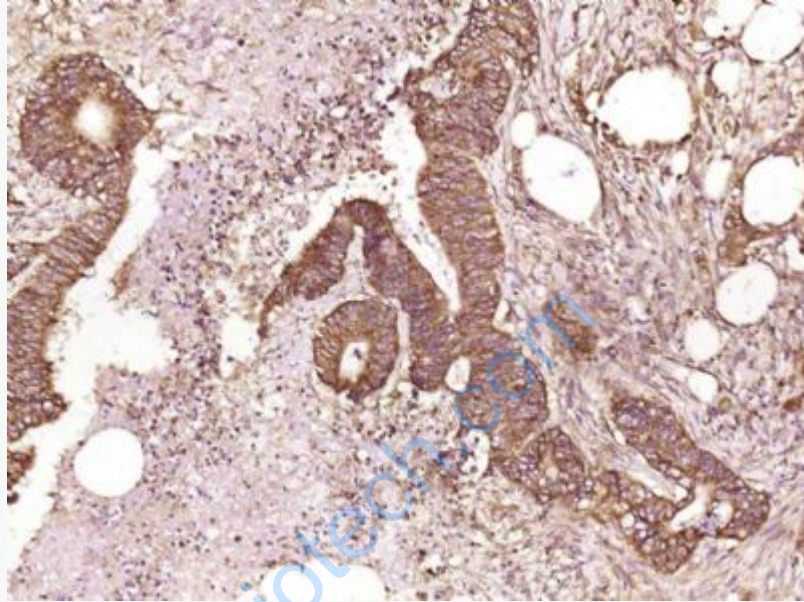
[Unigene: 75139](#) Human

[Unigene: 41637](#) Mouse

[Unigene: 73878](#) Rat

Important Note:

This product as supplied is intended for research use only, not for use in human, therapeutic or diagnostic applications.



Picture:

Paraformaldehyde-fixed, paraffin embedded (Human colon carcinoma); Antigen retrieval by boiling in sodium citrate buffer (pH6.0) for 15min; Block endogenous peroxidase by 3% hydrogen peroxide for 20 minutes; Blocking buffer (normal goat serum) at 37°C for 30min; Antibody incubation with (phospho-rafapkin 2 (Ser260)) Polyclonal Antibody, Unconjugated (SL3006R) at 1:400 overnight at 4°C, followed by operating according to SP Kit(Rabbit) (sp-0023) instructions and DAB staining.