



Rabbit Anti-phospho-Bax (Ser184) antibody

SL3010R

Product Name:	phospho-Bax (Ser184)
Chinese Name:	磷酸化Bax抗体
Alias:	Bax (phospho S184); Bax (phospho Ser184); p-Bax (S184); p-Bax (Ser184); apoptosis regulator BAX; Apoptosis regulator BAX cytoplasmic isoform beta; Apoptosis regulator BAX membrane isoform alpha; Bax isoform psi; BAX protein cytoplasmic isoform delta; Bax protein cytoplasmic isoform delta. antibody Bax protein cytoplasmic isoform gamma; Bax zeta; Bax-protein; Bcl-2-like protein 4; BCL2 associated X protein; BCL2L4; BAX HUMAN; Bcl2-L-4.
文献引用 	<p>Specific References(4) SL3010R has been referenced in 4 publications.</p> <p>[IF=5.52]Park, Ga Bin, et al. "Melphalan-Induced Apoptosis of EBV-Transformed B Cells through Upregulation of TAp73 and XAF1 and Nuclear Import of XPA." The Journal of Immunology (2013): 1203442.WB;Human. PubMed:24249729</p> <p>[IF=2.39]Gao, Xiu-Fang, et al. "Urocortin-2 suppression of p38-MAPK signaling as an additional mechanism for ischemic cardioprotection." Molecular and Cellular Biochemistry: 1-12.WB;Rat. PubMed:25245818</p> <p>[IF=3.02]Park, Gabin, et al. "Berberine induces mitochondrial apoptosis of EBV-transformed B cells through p53-mediated regulation of XAF1 and GADD45α." International Journal of Oncology.WB; PubMed:27121748</p> <p>[IF=3.23]Daverey, Amita, and Sandeep K. Agrawal. "Curcumin alleviates oxidative stress and mitochondrial dysfunction in astrocytes." Neuroscience 333 (2016): 92-</p>

	103.WB;Human. PubMed:27423629
Organism Species:	Rabbit
Clonality:	Polyclonal
React Species:	Human,Mouse,Rat,Dog,Pig,Cow,Sheep,
Applications:	WB=1:500-2000ELISA=1:500-1000Flow-Cyt=3µg /test not yet tested in other applications. optimal dilutions/concentrations should be determined by the end user.
Molecular weight:	21kDa
Cellular localization:	cytoplasmicThe cell membrane
Form:	Lyophilized or Liquid
Concentration:	1mg/ml
immunogen:	KLH conjugated Synthesised phosphopeptide derived from human Bax around the phosphorylation site of Ser184:TA(p-S)LT
Lsotype:	IgG
Purification:	affinity purified by Protein A
Storage Buffer:	0.01M TBS(pH7.4) with 1% BSA, 0.03% Proclin300 and 50% Glycerol.
Storage:	Store at -20 °C for one year. Avoid repeated freeze/thaw cycles. The lyophilized antibody is stable at room temperature for at least one month and for greater than a year when kept at -20°C. When reconstituted in sterile pH 7.4 0.01M PBS or diluent of antibody the antibody is stable for at least two weeks at 2-4 °C.
PubMed:	PubMed
Product Detail:	<p>The protein encoded by this gene belongs to the BCL2 protein family. BCL2 family members form hetero- or homodimers and act as anti- or pro-apoptotic regulators that are involved in a wide variety of cellular activities. This protein forms a heterodimer with BCL2, and functions as an apoptotic activator. This protein is reported to interact with, and increase the opening of, the mitochondrial voltage-dependent anion channel (VDAC), which leads to the loss in membrane potential and the release of cytochrome c. The expression of this gene is regulated by the tumor suppressor P53 and has been shown to be involved in P53-mediated apoptosis. Multiple alternatively spliced transcript variants, which encode different isoforms, have been reported for this gene. [provided by RefSeq, Jul 2008].</p> <p>Function: Accelerates programmed cell death by binding to, and antagonizing the apoptosis repressor BCL2 or its adenovirus homolog E1B 19k protein. Under stress conditions, undergoes a conformation change that causes translocation to the mitochondrion membrane, leading to the release of cytochrome c that then triggers apoptosis. Promotes activation of CASP3, and thereby apoptosis.</p> <p>Subunit: Homodimer. Forms higher oligomers under stress conditions. Interacts with BCL2L11. Interaction with BCL2L11 promotes BAX oligomerization and association with</p>

mitochondrial membranes, with subsequent release of cytochrome c. Forms heterodimers with BCL2, E1B 19K protein, BCL2L1 isoform Bcl-X(L), BCL2L2, MCL1 and A1. Interacts with SH3GLB1 and HN. Interacts with SFN and YWHAZ; the interaction occurs in the cytoplasm. Under stress conditions, JNK-mediated phosphorylation of SFN and YWHAZ, releases BAX to mitochondria. Isoform Sigma interacts with BCL2A1 and BCL2L1 isoform Bcl-X(L). Interacts with RNF144B, which regulates the ubiquitin-dependent stability of BAX. Interacts with CLU under stress conditions that cause a conformation change leading to BAX oligomerization and association with mitochondria. Does not interact with CLU in unstressed cells. Interacts with FAIM2/LFG2.

Subcellular Location:

Isoform Alpha: Mitochondrion membrane; Single-pass membrane protein. Cytoplasm. Note=Colocalizes with 14-3-3 proteins in the cytoplasm. Under stress conditions, undergoes a conformation change that causes release from JNK-phosphorylated 14-3-3 proteins and translocation to the mitochondrion membrane.

Isoform Beta: Cytoplasm.

Isoform Gamma: Cytoplasm.

Isoform Delta: Cytoplasm (Potential).

Tissue Specificity:

Expressed in a wide variety of tissues. Isoform Psi is found in glial tumors. Isoform Alpha is expressed in spleen, breast, ovary, testis, colon and brain, and at low levels in skin and lung. Isoform Sigma is expressed in spleen, breast, ovary, testis, lung, colon, brain and at low levels in skin. Isoform Alpha and isoform Sigma are expressed in promyelocytic leukemia, histiocytic lymphoma, Burkitt's lymphoma, T-cell lymphoma, lymphoblastic leukemia, breast adenocarcinoma, ovary adenocarcinoma, prostate carcinoma, prostate adenocarcinoma, lung carcinoma, epidermoid carcinoma, small cell lung carcinoma and colon adenocarcinoma cell lines.

Similarity:

Belongs to the Bcl-2 family.

SWISS:

Q07812

Gene ID:

581

Database links:

[Entrez Gene: 581](#) Human

[Entrez Gene: 12028](#) Mouse

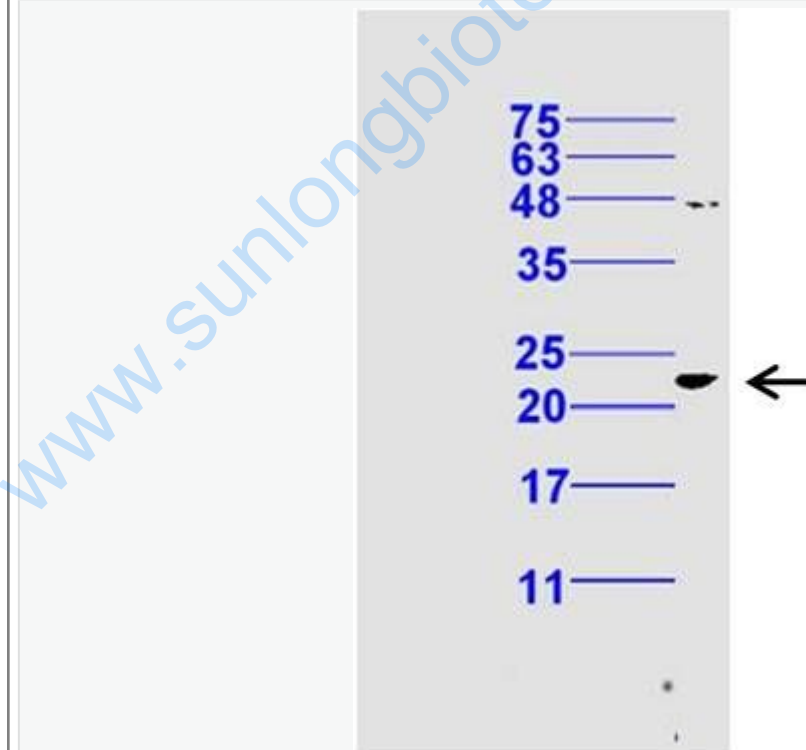
[Entrez Gene: 24887](#) Rat

[Omin: 600040](#) Human
[SwissProt: Q07812](#) Human
[SwissProt: Q07813](#) Mouse
[SwissProt: Q63690](#) Rat
[Unigene: 624291](#) Human
[Unigene: 19904](#) Mouse
[Unigene: 10668](#) Rat

Important Note:

This product as supplied is intended for research use only, not for use in human, therapeutic or diagnostic applications.

Picture:



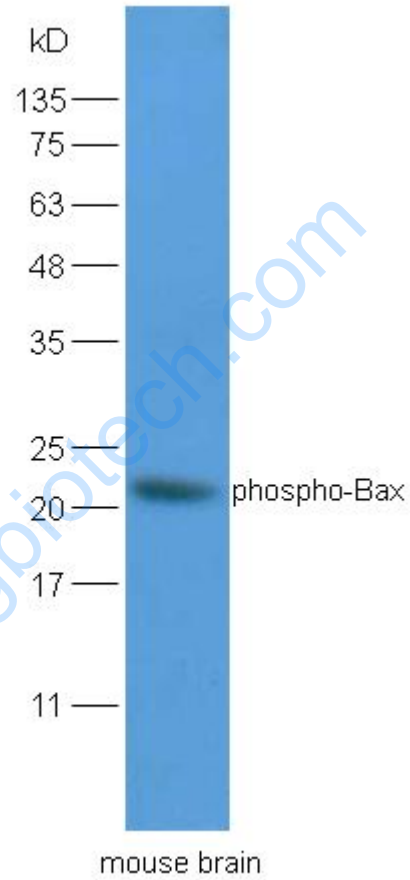
Sample: Testis (Mouse) Tissue Lysate at 30 ug

Primary: Anti-phospho-Bax (Ser184) (SL3010R) at 1/300 dilution

Secondary: IRDye800CW Goat Anti-Rabbit IgG at 1/20000 dilution

Predicted band size: 21 kD

Observed band size: 22 kD



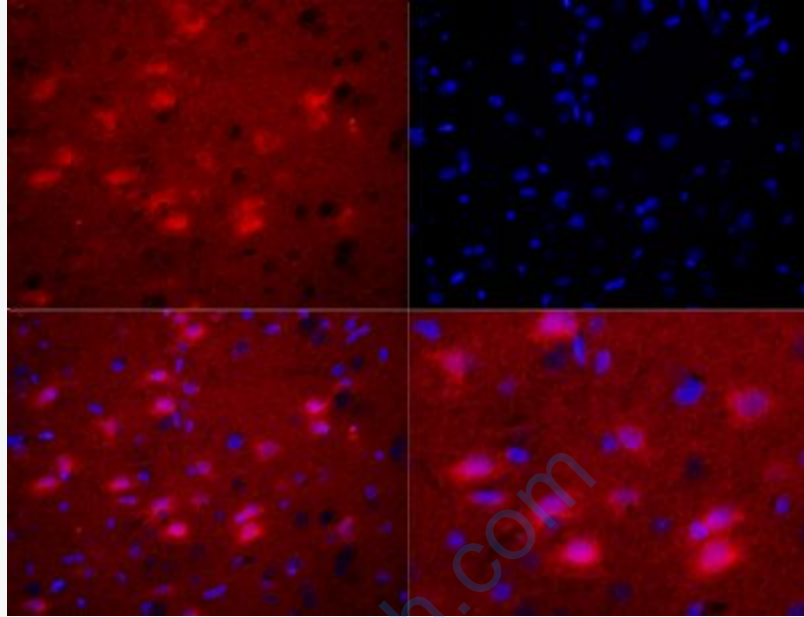
Sample: Brain(Mouse) lysate at 30ug;

Primary: Anti-phospho-Bax (Ser184) (SL3010R) at 1:200 dilution;

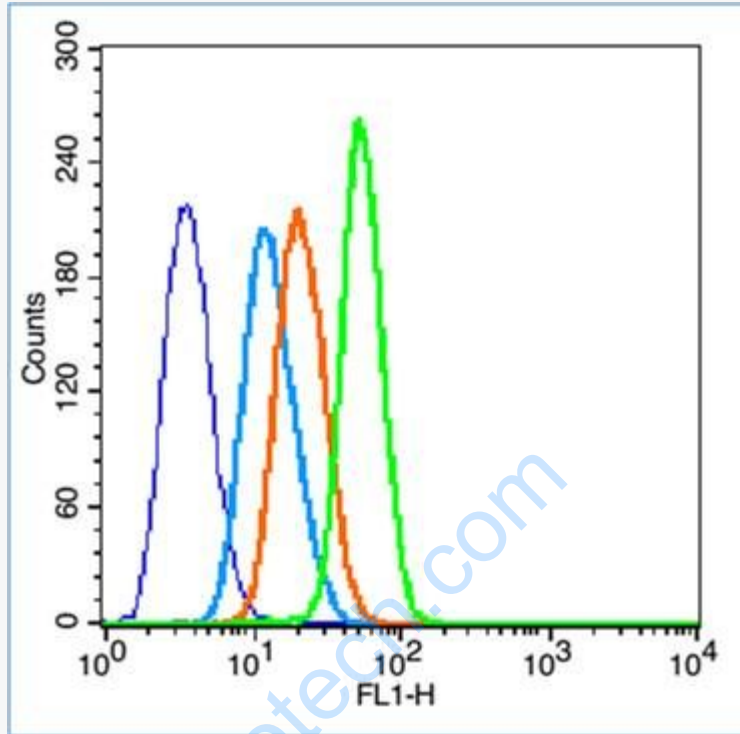
Secondary: HRP conjugated Goat Anti-Rabbit IgG(SL3010R) at 1: 5000 dilution;

Predicted band size : 21kD

Observed band size : 21kD



Tissue/cell: rat brain tissue;4% Paraformaldehyde-fixed and paraffin-embedded;
Antigen retrieval: citrate buffer (0.01M, pH 6.0), Boiling bathing for 15min;
Blocking buffer (normal goat serum,C-0005) at 37°C for 20 min;
Incubation: Anti-phospho-Bax(Ser184) Polyclonal Antibody,
Unconjugated(SL3010R) 1:200, overnight at 4°C; The secondary antibody was Goat
Anti-Rabbit IgG, Cy3 conjugated (SL3010R)used at 1:200 dilution for 40 minutes at
37°C. DAPI(5ug/ml,blue,C-0033) was used to stain the cell nuclei

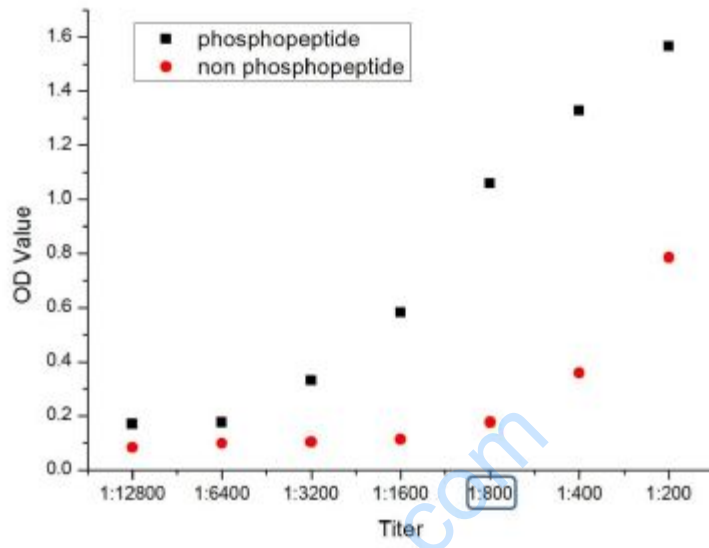


Blank control (blue line): HL60 (fixed with 2% paraformaldehyde (10 min) and then permeabilized with 0.1% PBS-Tween for 20 min at room temperature).

Primary Antibody (green line): Rabbit Anti-phospho-Bax (Ser184) antibody (SL3010R), Dilution: $3\mu\text{g} / 10^6$ cells;

Isotype Control Antibody (orange line): Rabbit IgG .

Secondary Antibody (white blue line): Goat anti-rabbit IgG-FITC, Dilution: $1\mu\text{g} / \text{test}$.



phosphopeptide non phosphopeptide

www.sunlongbiotech.com