



Rabbit Anti-phospho-Bcl 10 (Ser218) antibody

SL3011R

Product Name:	phospho-Bcl 10 (Ser218)
Chinese Name:	磷酸化Bcl-10抗体
Alias:	B cell lymphoma/leukemia10; AI132454; B cell CLL/lymphoma 10; B-cell leukemia/lymphoma 10; Bcl 10; Bcl-10; Bcl10; c E10; c-E10; C81403; CARD containing apoptotic signaling protein; CARD containing molecule enhancing NF kappa B; CARD containing molecule enhancing NF kB; CARD containing molecule enhancing NFkB; CARD containing proapoptotic protein; CARD like apoptotic protein; CARMEN; cE10 antibody; CED 3/ICH 1 prodomain homologous E10 like regulator; CED3/ICH1 prodomain homologous E10 like regulator; Cellular E10; Cellular homolog of vCARMEN; CIPER; CLAP; hCLAP; Mammalian CARD containing adapter molecule E10; mE 10; mE10; R-RCD1; BCL10_RAT .
Organism Species:	Rabbit
Clonality:	Polyclonal
React Species:	Human, Mouse, Rat,
Applications:	WB=1:500-2000ELISA=1:500-1000IHC-P=1:400-800IHC-F=1:400-800IF=1:100-500 (Paraffin sections need antigen repair) not yet tested in other applications. optimal dilutions/concentrations should be determined by the end user.
Molecular weight:	26kDa
Cellular localization:	cytoplasmicThe cell membrane
Form:	Lyophilized or Liquid
Concentration:	1mg/ml
immunogen:	KLH conjugated Synthesised phosphopeptide derived from rat Bcl10 around the phosphorylation site of Ser218:GN(p-S)SE
Lsotype:	IgG
Purification:	affinity purified by Protein A
Storage Buffer:	0.01M TBS(pH7.4) with 1% BSA, 0.03% Proclin300 and 50% Glycerol.
Storage:	Store at -20 °C for one year. Avoid repeated freeze/thaw cycles. The lyophilized antibody is stable at room temperature for at least one month and for greater than a year

	when kept at -20°C. When reconstituted in sterile pH 7.4 0.01M PBS or diluent of antibody the antibody is stable for at least two weeks at 2-4 °C.
PubMed:	PubMed
Product Detail:	<p>Bcl10/CIPER/CLAP/mE10 is expressed in many human and murine tissues. It contains a CARD (caspase recruiting domain) domain and is involved in activation of caspase9 to induce apoptosis. It is a cellular homolog of equine herpesvirus 2 E-10. It is known to induce activation of JNK, p38 and NF kappaB. Mutations in Bcl10 are observed in many B and T cell lymphomas implicating its role in pathogenesis of human cancer.</p> <p>Function: Promotes apoptosis, pro-caspase-9 maturation and activation of NF-kappa-B via NIK and IKK. May be an adapter protein between upstream TNFR1-TRADD-RIP complex and the downstream NIK-IKK-IKAP complex. Is a substrate for MALT1.</p> <p>Subunit: Found in a membrane raft complex, at least composed of BCL10, CARD11, DPP4 and IKBKB. Self-associates by CARD-CARD interaction and forms a tight complex with MALT1. Interacts with other CARD-proteins such as CARD9, CARD10, CARD11 and CARD14. Binds caspase-9 with its C-terminal domain. Interacts with TRAF2 and BIRC2/c-IAP2. Interacts with PELI2 and SOCS3; these interactions may be mutually exclusive (By similarity).</p> <p>Subcellular Location: Cytoplasm, perinuclear region. Membrane raft. Note=Appears to have a perinuclear, compact and filamentous pattern of expression. Also found in the nucleus of several types of tumor cells. Colocalized with DPP4 in membrane rafts.</p> <p>Tissue Specificity: Ubiquitous.</p> <p>Post-translational modifications: Phosphorylated. Phosphorylation results in dissociation from TRAF2 and binding to BIRC2/c-IAP2. Phosphorylated by IKBKB/IKKB.</p> <p>DISEASE: Note=A chromosomal aberration involving BCL10 is recurrent in low-grade mucosa-associated lymphoid tissue (MALT lymphoma). Translocation t(1;14)(p22;q32). Although the BCL10/IgH translocation leaves the coding region of BCL10 intact, frequent BCL10 mutations could be attributed to the Ig somatic hypermutation mechanism resulting in nucleotide transitions. Note=Defects in BCL10 are involved in various types of cancer. Mesothelioma, malignant (MESOM) [MIM:156240]: An aggressive neoplasm of the serosal lining of the chest. It appears as broad sheets of cells, with some regions containing spindle-shaped, sarcoma-like cells and other regions showing adenomatous patterns. Pleural mesotheliomas have been linked to exposure to asbestos. Note=The gene represented in this entry may be involved in disease pathogenesis.</p>

Similarity:

Contains 1 CARD domain.

SWISS:

Q9Z0H7

Gene ID:

83477

Database links:

[Entrez Gene: 83477](#) Rat

[Entrez Gene: 8915](#) Human

[Entrez Gene: 12042](#) Mouse

[Omim: 603517](#) Human

[SwissProt: O95999](#) Human

[SwissProt: Q9Z0H7](#) Mouse

[SwissProt: Q9QYN5](#) Rat

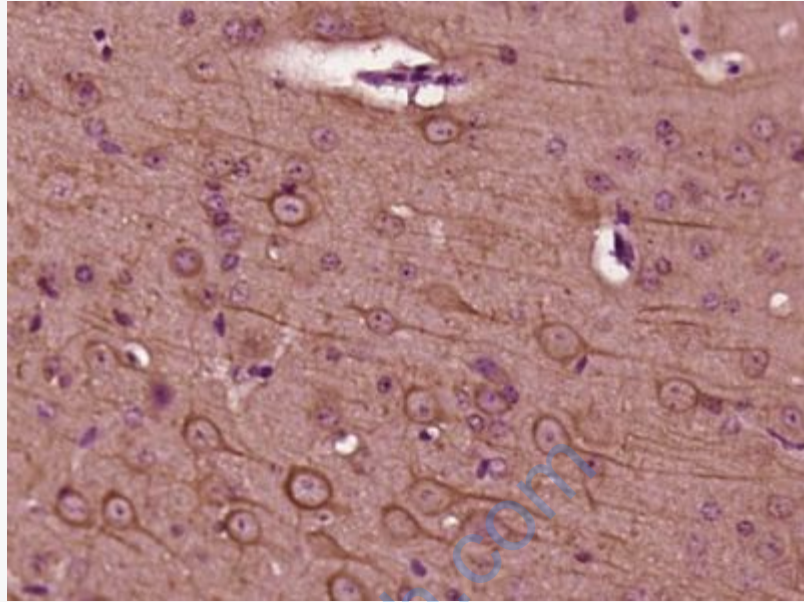
[Unigene: 193516](#) Human

[Unigene: 239141](#) Mouse

[Unigene: 13007](#) Rat

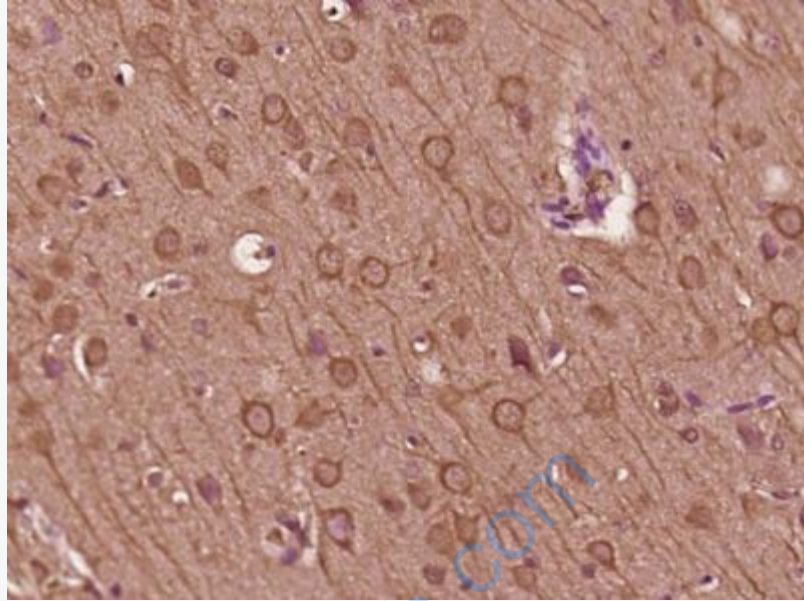
Important Note:

This product as supplied is intended for research use only, not for use in human, therapeutic or diagnostic applications.



Picture:

Paraformaldehyde-fixed, paraffin embedded (Mouse brain); Antigen retrieval by boiling in sodium citrate buffer (pH6.0) for 15min; Block endogenous peroxidase by 3% hydrogen peroxide for 20 minutes; Blocking buffer (normal goat serum) at 37°C for 30min; Antibody incubation with (phospho-Bcl 10 (Ser218)) Polyclonal Antibody, Unconjugated (SL3011R) at 1:400 overnight at 4°C, followed by operating according to SP Kit(Rabbit) (sp-0023) instructions and DAB staining.



Paraformaldehyde-fixed, paraffin embedded (Rat brain); Antigen retrieval by boiling in sodium citrate buffer (pH6.0) for 15min; Block endogenous peroxidase by 3% hydrogen peroxide for 20 minutes; Blocking buffer (normal goat serum) at 37°C for 30min; Antibody incubation with (phospho-Bcl 10 (Ser218)) Polyclonal Antibody, Unconjugated (SL3011R) at 1:400 overnight at 4°C, followed by operating according to SP Kit(Rabbit) (sp-0023) instructions and DAB staining.