



## Rabbit Anti-Phospho-Aurora B (Thr232) + Aurora C (Thr198) antibody

SL3049R

<b>Product Name:</b>	Phospho-Aurora B (Thr232) + Aurora C (Thr198)
<b>Chinese Name:</b>	磷酸化有丝分裂激酶B/C抗体
<b>Alias:</b>	Aurora B (phospho T232); p-Aurora B (phospho T232); AIK2; AIM1; ARK2; AurB; AURKB; Aurora 1; Aurora and Ipl1 like midbody associated protein 1; Aurora kinase B; Aurora related kinase 2; Aurora-B; Aurora/IPL1 related kinase 2; IPL1; Serine/threonine kinase 12; Serine/threonine protein kinase 12; STK1; STK12; STK5; AURKB HUMAN.
<b>Organism Species:</b>	Rabbit
<b>Clonality:</b>	Polyclonal
<b>React Species:</b>	Human,Mouse,Rat,Dog,Pig,Cow,Horse,Rabbit,Sheep,
<b>Applications:</b>	WB=1:500-2000ELISA=1:500-1000 not yet tested in other applications. optimal dilutions/concentrations should be determined by the end user.
<b>Molecular weight:</b>	39kDa
<b>Cellular localization:</b>	The nucleuscytoplasmic
<b>Form:</b>	Lyophilized or Liquid
<b>Concentration:</b>	1mg/ml
<b>immunogen:</b>	KLH conjugated Synthesised phosphopeptide derived from human Aurora B around the phosphorylation site of Thr232:RK(p-T)MC
<b>Lsotype:</b>	IgG
<b>Purification:</b>	affinity purified by Protein A
<b>Storage Buffer:</b>	0.01M TBS(pH7.4) with 1% BSA, 0.03% Proclin300 and 50% Glycerol.
<b>Storage:</b>	Store at -20 °C for one year. Avoid repeated freeze/thaw cycles. The lyophilized antibody is stable at room temperature for at least one month and for greater than a year when kept at -20°C. When reconstituted in sterile pH 7.4 0.01M PBS or diluent of antibody the antibody is stable for at least two weeks at 2-4 °C.
<b>PubMed:</b>	<a href="#">PubMed</a>

This gene encodes a member of the aurora kinase subfamily of serine/threonine kinases. The genes encoding the other two members of this subfamily are located on chromosomes 19 and 20. These kinases participate in the regulation of segregation of chromosomes during mitosis and meiosis through association with microtubules. A pseudogene of this gene is located on chromosome 8. Multiple transcript variants encoding different isoforms have been found for this gene. [provided by RefSeq, Jan 2013]

**Function:**

May be directly involved in regulating the cleavage of polar spindle microtubules and is a key regulator for the onset of cytokinesis during mitosis. Component of the chromosomal passenger complex (CPC), a complex that acts as a key regulator of mitosis. The CPC complex has essential functions at the centromere in ensuring correct chromosome alignment and segregation and is required for chromatin-induced microtubule stabilization and spindle assembly. Phosphorylates 'Ser-10' and 'Ser-28' of histone H3 during mitosis. Required for kinetochore localization of BUB1 and SGOL1. Interacts with INCENP.

**Subcellular Location:**

Nucleus. Chromosome. Chromosome > centromere. Cytoplasm > cytoskeleton > spindle. Localizes on chromosome arms and inner centromeres from prophase through metaphase and then transferring to the spindle midzone and midbody from anaphase through cytokinesis. Colocalized with gamma tubulin in the mid-body.

**Tissue Specificity:**

High level expression seen in the thymus. It is also expressed in the spleen, lung, testis, colon, placenta and fetal liver. Expressed during S and G2/M phase and expression is up-regulated in cancer cells during M phase.

**Post-translational modifications:**

Ubiquitinated by different BCR (BTB-CUL3-RBX1) E3 ubiquitin ligase complexes. Ubiquitinated by the BCR(KLHL9-KLHL13) E3 ubiquitin ligase complex, ubiquitination leads to removal from mitotic chromosomes and is required for cytokinesis. During anaphase, the BCR(KLHL21) E3 ubiquitin ligase complex recruits the CPC complex from chromosomes to the spindle midzone and mediates the ubiquitination of AURKB. Ubiquitination of AURKB by BCR(KLHL21) E3 ubiquitin ligase complex may not lead to its degradation by the proteasome.

**DISEASE:**

Note=Disruptive regulation of expression is a possible mechanism of the perturbation of chromosomal integrity in cancer cells through its dominant-negative effect on cytokinesis.

**Similarity:**

Belongs to the protein kinase superfamily. Ser/Thr protein kinase family. Aurora subfamily.

**Product Detail:**

Contains 1 protein kinase domain.

**SWISS:**  
Q96GD4

**Gene ID:**  
9212

**Database links:**

[Entrez Gene: 9212](#) Human

[Entrez Gene: 20877](#) Mouse

[Entrez Gene: 114592](#) Rat

[Omim: 604970](#) Human

[SwissProt: Q96GD4](#) Human

[SwissProt: O70126](#) Mouse

[SwissProt: O55099](#) Rat

[Unigene: 442658](#) Human

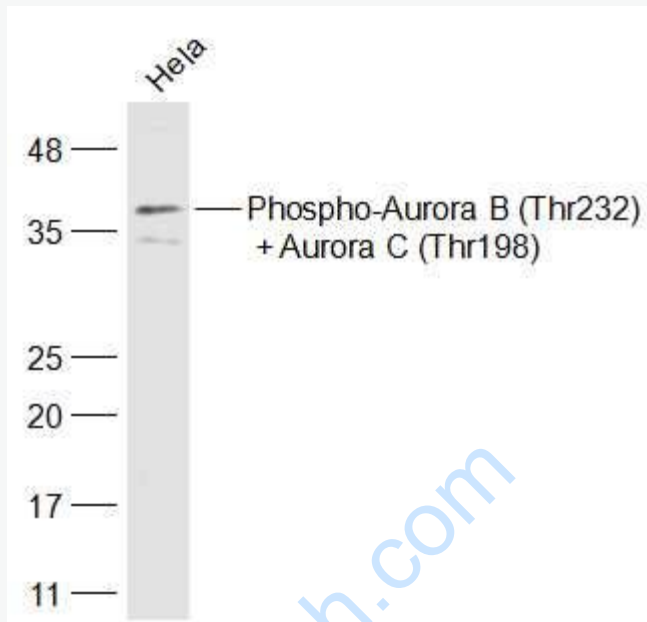
[Unigene: 3488](#) Mouse

[Unigene: 10865](#) Rat

**Important Note:**

This product as supplied is intended for research use only, not for use in human, therapeutic or diagnostic applications.

Picture:



Sample:

HeLa(Human) Cell Lysate at 30 ug

Primary: Anti-Phospho-Aurora B (Thr232) + Aurora C (Thr198) (SL3049R) at 1/500 dilution

Secondary: IRDye800CW Goat Anti-Rabbit IgG at 1/20000 dilution

Predicted band size: 39 kD

Observed band size: 39 kD