



Rabbit Anti-Phospho-CEBP beta (Thr235) antibody

SL3063R

Product Name:	Phospho-CEBP beta (Thr235)
Chinese Name:	磷酸化transcriptional regulatory factorCEBP β抗体
Alias:	P-CEBP beta (Thr235); P-CEBP beta (T235); CEBP-beta; CLEBP beta; CCAAT Enhancer Binding Protein beta; AGP/EBP; C EBP beta; C/EBP related protein 2; CEBPB; CRP2; IL 6DBP; IL6DBP; Interleukin 6 dependent binding protein; LAP; Liver enriched transcriptional activator; NF IL6; NFIL6; Nuclear factor NF IL6; SF B; SFB; Silencer factor B; TCF5; Transcription factor 5; C/EBP beta; CCAAT/enhancer-binding protein beta; CEBPB_HUMAN; Liver activator protein; Liver enriched transcriptional activator; Nuclear factor NF IL6; Nuclear factor NF-IL6; TCF-5.
Organism Species:	Rabbit
Clonality:	Polyclonal
React Species:	Human,Mouse,Rat,Dog,Pig,Cow,Rabbit,
Applications:	WB=1:500-2000ELISA=1:500-1000Flow-Cyt=1μg /test not yet tested in other applications. optimal dilutions/concentrations should be determined by the end user.
Molecular weight:	38kDa
Cellular localization:	The nucleus
Form:	Lyophilized or Liquid
Concentration:	1mg/ml
immunogen:	KLH conjugated Synthesised phosphopeptide derived from human CEBP beta around the phosphorylation site of Thr235:PG(p-T)PS
Lsotype:	IgG
Purification:	affinity purified by Protein A
Storage Buffer:	0.01M TBS(pH7.4) with 1% BSA, 0.03% Proclin300 and 50% Glycerol.
Storage:	Store at -20 °C for one year. Avoid repeated freeze/thaw cycles. The lyophilized antibody is stable at room temperature for at least one month and for greater than a year when kept at -20°C. When reconstituted in sterile pH 7.4 0.01M PBS or diluent of

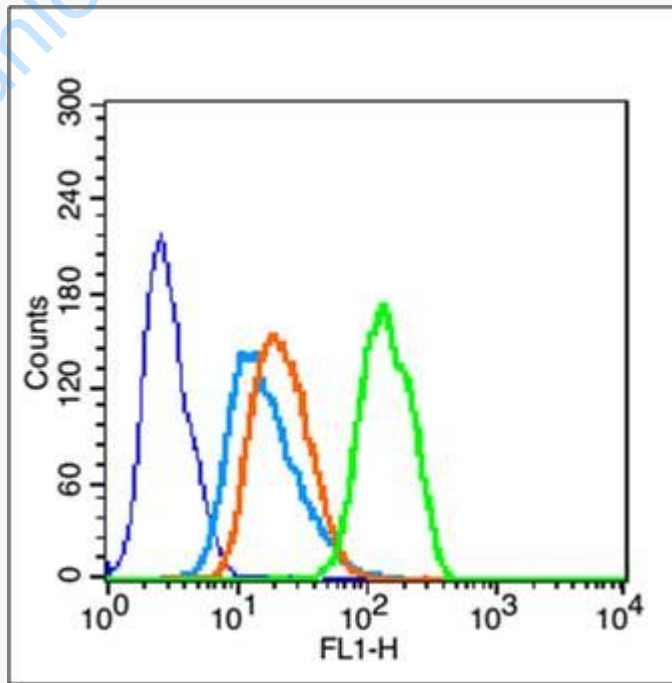
	antibody the antibody is stable for at least two weeks at 2-4 °C.
PubMed:	PubMed
Product Detail:	<p>The protein encoded by this intronless gene is a bZIP transcription factor which can bind as a homodimer to certain DNA regulatory regions. It can also form heterodimers with the related proteins CEBP alpha, CEBP delta, and CEBP gamma. The encoded protein is important in the regulation of genes involved in immune and inflammatory responses and has been shown to bind to the IL1 response element in the IL6 gene, as well as to regulatory regions of several acute-phase and cytokine genes. In addition, the encoded protein can bind the promoter and upstream element and stimulate the expression of the collagen type I gene.</p> <p>Function: Important transcriptional activator in the regulation of genes involved in immune and inflammatory responses. Specifically binds to an IL-1 response element in the IL-6 gene. NF-IL6 also binds to regulatory regions of several acute-phase and cytokines genes. It probably plays a role in the regulation of acute-phase reaction, inflammation and hemopoiesis. The consensus recognition site is 5'-T[TG]NNGNAA[TG]-3'. Functions in brown adipose tissue (BAT) differentiation.</p> <p>Subunit: Binds DNA as a dimer and can form stable heterodimers with C/EBP alpha and gamma. Interacts with TRIM28 and PTGES2. Interacts with PRDM16. Interacts with CCDC85B. Forms a complex with THOC5 (By similarity). Interacts with ZNF638; this interaction increases transcriptional activation (By similarity).</p> <p>Subcellular Location: Nucleus.</p> <p>Tissue Specificity: Expressed at low levels in the lung, kidney and spleen.</p> <p>Similarity: Belongs to the bZIP family. C/EBP subfamily. Contains 1 bZIP domain.</p> <p>SWISS: P17676</p> <p>Gene ID: 1051</p> <p>Database links: Entrez Gene: 1051 Human Entrez Gene: 12608 Mouse</p>

[Entrez Gene: 24253](#) Rat
[Omim: 189965](#) Human
[SwissProt: P17676](#) Human
[SwissProt: P28033](#) Mouse
[SwissProt: P21272](#) Rat
[Unigene: 517106](#) Human
[Unigene: 719041](#) Human
[Unigene: 720603](#) Human
[Unigene: 439656](#) Mouse
[Unigene: 6479](#) Rat

Important Note:

This product as supplied is intended for research use only, not for use in human, therapeutic or diagnostic applications.

Picture:



Blank control (blue line): Hela(fixed with 70% ethanol (Overnight at 4°C) and then

permeabilized with 90% ice-cold methanol for 30 min on ice)

Primary Antibody (green line): Rabbit Anti-Phospho-CEBP beta (Thr235) antibody (SL3063R), Dilution: $1\mu\text{g} / 10^6$ cells;

Isotype Control Antibody (orange line): Rabbit IgG .

Secondary Antibody (white blue line): Goat anti-rabbit IgG-FITC, Dilution: $1\mu\text{g} / \text{test}$.

www.sunlongbiotech.com