



Rabbit Anti-phospho-MCSF Receptor (Tyr923) antibody

SL3079R

Product Name:	phospho-MCSF Receptor (Tyr923)
Chinese Name:	磷酸化巨噬细胞集落刺激因子受体抗体
Alias:	MCSF Receptor; C FMS; CD 115; CD115; CD115 antigen; CFMS; Colony stimulating factor 1 receptor; Colony stimulating factor I receptor; CSF 1 R; CSF 1R; CSF-1 receptor; CSF-1-R; CSF1 R; CSF1R; CSF1R_HUMAN; CSFR; FIM 2; FIM2; FMS; FMS proto oncogene; FMS protooncogene; HDLS; M-CSF Receptor; M-CSF-R; Macrophage colony stimulating factor 1 receptor; Macrophage colony stimulating factor I receptor; Macrophage colony-stimulating factor 1 receptor; McDonough feline sarcoma viral (v fms) oncogene homolog; Oncogen FMS; Proto-oncogene c-Fms; V-FMS McDonough feline sarcoma viral oncogen homolog, formerly.
Organism Species:	Rabbit
Clonality:	Polyclonal
React Species:	Human,Mouse,
Applications:	WB=1:500-2000ELISA=1:500-1000Flow-Cyt=1μg /test not yet tested in other applications. optimal dilutions/concentrations should be determined by the end user.
Molecular weight:	107kDa
Cellular localization:	The cell membrane
Form:	Lyophilized or Liquid
Concentration:	1mg/ml
immunogen:	KLH conjugated Synthesised phosphopeptide derived from human CSF1R around the phosphorylation site of tyrosine 923:RD(p-Y)TN<Cytoplasmic>
Lsotype:	IgG
Purification:	affinity purified by Protein A
Storage Buffer:	0.01M TBS(pH7.4) with 1% BSA, 0.03% Proclin300 and 50% Glycerol.
Storage:	Store at -20 °C for one year. Avoid repeated freeze/thaw cycles. The lyophilized antibody is stable at room temperature for at least one month and for greater than a year

	when kept at -20°C. When reconstituted in sterile pH 7.4 0.01M PBS or diluent of antibody the antibody is stable for at least two weeks at 2-4 °C.
PubMed:	PubMed
Product Detail:	<p>This protein tyrosine kinase transmembrane receptor is the receptor for colony stimulating factor 1, a cytokine which controls the production, differentiation, and function of macrophages. This receptor mediates most if not all of the biological effects of this cytokine. Ligand binding activates the receptor kinase through a process of oligomerization and transphosphorylation. The encoded protein is a member of the CSF1/PDGF receptor family of tyrosine protein kinases and contains 5 immunoglobulin like C2 type domains. CD115 is expressed by cells of the monocytic lineage and by progenitor cells. Mutations in this gene have been associated with a predisposition to myeloid malignancy.</p> <p>Function: Tyrosine-protein kinase that acts as cell-surface receptor for CSF1 and IL34 and plays an essential role in the regulation of survival, proliferation and differentiation of hematopoietic precursor cells, especially mononuclear phagocytes, such as macrophages and monocytes. Promotes the release of proinflammatory chemokines in response to IL34 and CSF1, and thereby plays an important role in innate immunity and in inflammatory processes. Plays an important role in the regulation of osteoclast proliferation and differentiation, the regulation of bone resorption, and is required for normal bone and tooth development. Required for normal male and female fertility, and for normal development of milk ducts and acinar structures in the mammary gland during pregnancy. Promotes reorganization of the actin cytoskeleton, regulates formation of membrane ruffles, cell adhesion and cell migration, and promotes cancer cell invasion. Activates several signaling pathways in response to ligand binding. Phosphorylates PIK3R1, PLCG2, GRB2, SLA2 and CBL. Activation of PLCG2 leads to the production of the cellular signaling molecules diacylglycerol and inositol-1,4,5-trisphosphate, that then lead to the activation of protein kinase C family members, especially PRKCD. Phosphorylation of PIK3R1, the regulatory subunit of phosphatidylinositol 3-kinase, leads to activation of the AKT1 signaling pathway. Activated CSF1R also mediates activation of the MAP kinases MAPK1/ERK2 and/or MAPK3/ERK1, and of the SRC family kinases SRC, FYN and YES1. Activated CSF1R transmits signals both via proteins that directly interact with phosphorylated tyrosine residues in its intracellular domain, or via adapter proteins, such as GRB2. Promotes activation of STAT family members STAT3, STAT5A and/or STAT5B. Promotes tyrosine phosphorylation of SHC1 and INPP5D/SHIP-1. Receptor signaling is down-regulated by protein phosphatases, such as INPP5D/SHIP-1, that dephosphorylate the receptor and its downstream effectors, and by rapid internalization of the activated receptor.</p> <p>Subunit: Interacts with INPPL1/SHIP2 and THOC5. Monomer. Homodimer. Interacts with CSF1 and IL34. Interaction with dimeric CSF1 or IL34 leads to receptor homodimerization. Interacts (tyrosine phosphorylated) with PLCG2 (via SH2 domain). Interacts (tyrosine phosphorylated) with PIK3R1 (via SH2 domain). Interacts (tyrosine phosphorylated)</p>

with FYN, YES1 and SRC (via SH2 domain). Interacts (tyrosine phosphorylated) with CBL, GRB2 and SLA2. .

Subcellular Location:

Cell membrane; Single-pass type I membrane protein.

Tissue Specificity:

Expressed in bone marrow and in differentiated blood mononuclear cells.

Post-translational modifications:

Autophosphorylated in response to CSF1 or IL34 binding. Phosphorylation at Tyr-561 is important for normal down-regulation of signaling by ubiquitination, internalization and degradation. Phosphorylation at Tyr-561 and Tyr-809 is important for interaction with SRC family members, including FYN, YES1 and SRC, and for subsequent activation of these protein kinases. Phosphorylation at Tyr-699 and Tyr-923 is important for interaction with GRB2. Phosphorylation at Tyr-723 is important for interaction with PIK3R1. Phosphorylation at Tyr-708 is important for normal receptor degradation. Phosphorylation at Tyr-723 and Tyr-809 is important for interaction with PLCG2. Phosphorylation at Tyr-969 is important for interaction with CBL. Ubiquitinated. Becomes rapidly polyubiquitinated after autophosphorylation, leading to its degradation.

DISEASE:

Note=Aberrant expression of CSF1 or CSF1R can promote cancer cell proliferation, invasion and formation of metastases. Overexpression of CSF1 or CSF1R is observed in a significant percentage of breast, ovarian, prostate, and endometrial cancers.

Note=Aberrant expression of CSF1 or CSF1R may play a role in inflammatory diseases, such as rheumatoid arthritis, glomerulonephritis, atherosclerosis, and allograft rejection.

Similarity:

Belongs to the protein kinase superfamily. Tyr protein kinase family. CSF-1/PDGF receptor subfamily.

Contains 5 Ig-like C2-type (immunoglobulin-like) domains.

Contains 1 protein kinase domain.

SWISS:

P07333

Gene ID:

1436

Database links:

[Entrez Gene: 1436](#)Human

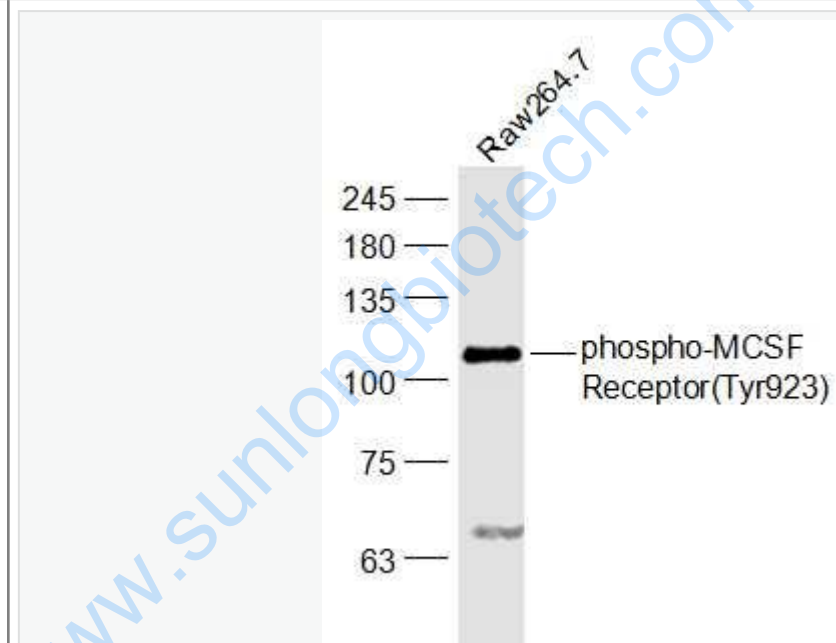
[Entrez Gene: 12978](#)Mouse

[Omid: 164770](#)Human
[SwissProt: P07333](#)Human
[SwissProt: P09581](#)Mouse
[Unigene: 586219](#)Human
[Unigene: 22574](#)Mouse

Important Note:

This product as supplied is intended for research use only, not for use in human, therapeutic or diagnostic applications.

Picture:



Sample:

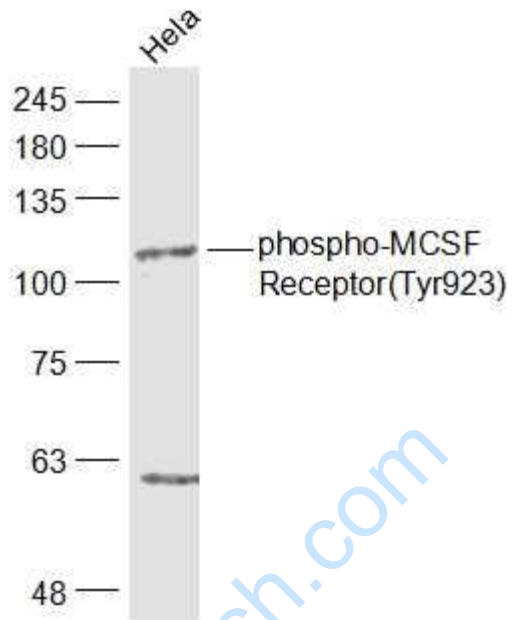
Raw264.7(Mouse) Cell Lysate at 30 ug

Primary: Anti-phospho-MCSF Receptor(Tyr923)? (SL3079R) at 1/1000 dilution

Secondary: IRDye800CW Goat Anti-Rabbit IgG at 1/20000 dilution

Predicted band size: 107 kD

Observed band size: 107 kD



Sample:

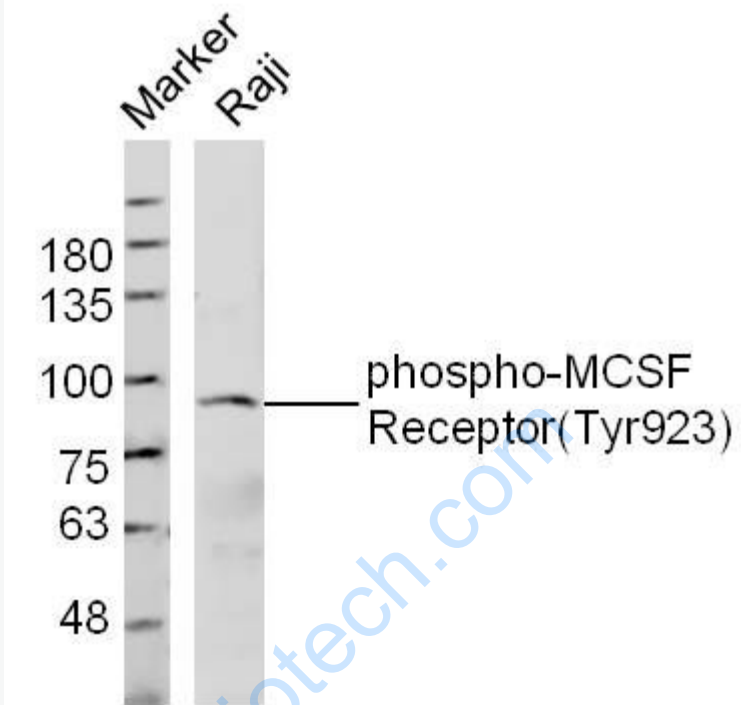
HeLa(Human) Cell Lysate at 30 ug

Primary: Anti-phospho-MCSF Receptor(Tyr923)? (SL3079R) at 1/1000 dilution

Secondary: IRDye800CW Goat Anti-Rabbit IgG at 1/20000 dilution

Predicted band size: 107 kD

Observed band size: 107 kD



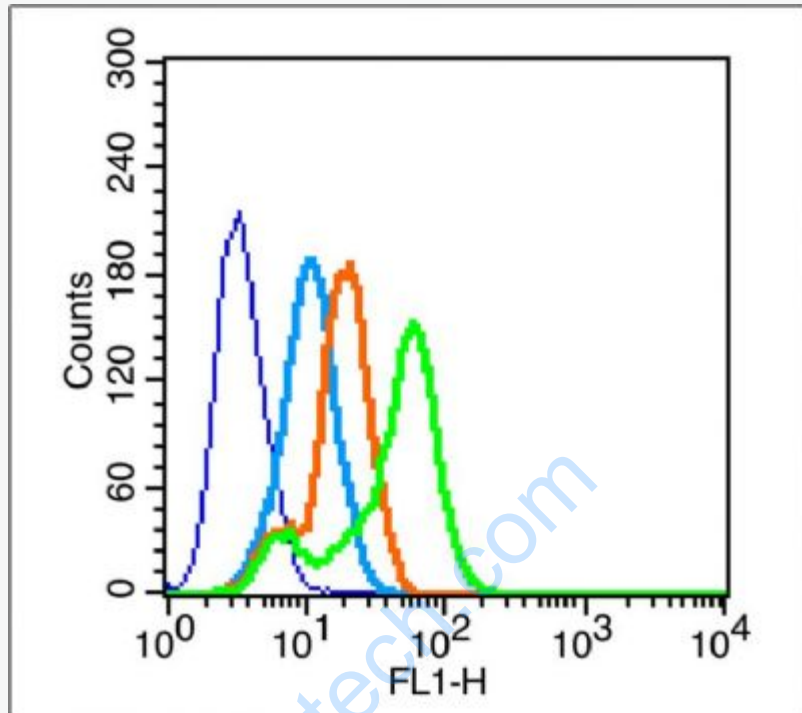
Sample: Raji (human)Cell Lysate at 40 ug

Primary: Anti- p-MCSF Receptor(Tyr923) (SL3079R) at 1/300 dilution

Secondary: IRDye800CW Goat Anti-Rabbit IgG at 1/20000 dilution

Predicted band size: 107 kD

Observed band size: 95 kD



Blank control (blue line): MCF7 (blue).

Primary Antibody (green line): Rabbit Anti-phospho-MCSF Receptor(Tyr923) antibody (SL3079R)

Dilution: $1\mu\text{g} / 10^6$ cells;

Isotype Control Antibody (orange line): Rabbit IgG .

Secondary Antibody (white blue line): F(ab')₂ fragment goat anti-rabbit IgG-FITC

Dilution: $1\mu\text{g} / \text{test}$.

Protocol

The cells were fixed with 2% paraformaldehyde for 10 min at room temperature. Cells stained with Primary Antibody for 30 min at room temperature.

The cells were then incubated in 1 X PBS/2%BSA/10% goat serum to block non-specific protein-protein interactions followed by the antibody for 15 min at room temperature. The secondary antibody used for 40 min at room temperature.

	Acquisition of 20,000 events was performed.
--	---

www.sunlongbiotech.com